



NOVAC

C E R A M I C

Committed to Quality

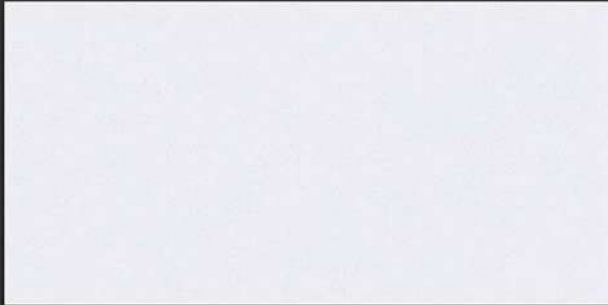


MATT V2

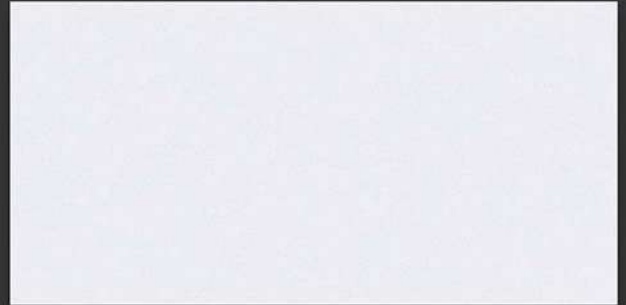
300
X_{mm}
600

DIGITAL WALL TILES

MATT SERIES



6001_LT-(Plain)
6001_HL1-(Punch)
6001_DK-(Plain)

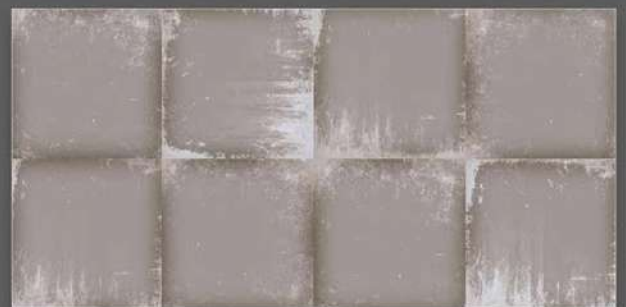
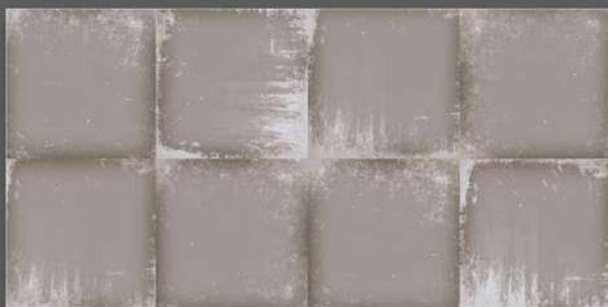
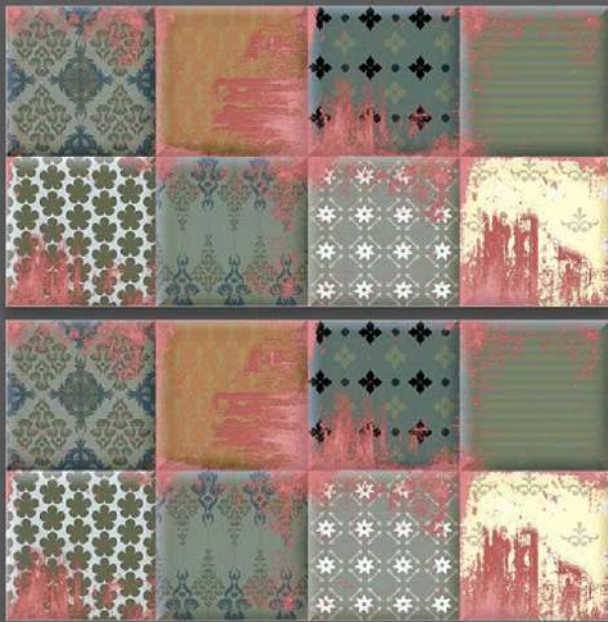
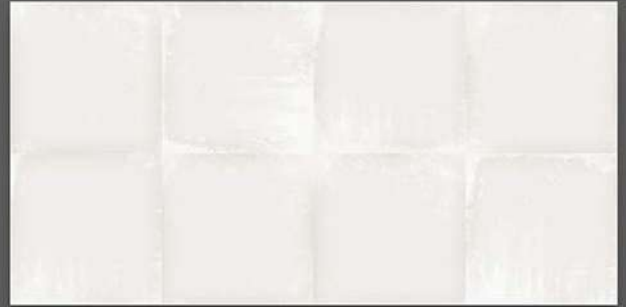
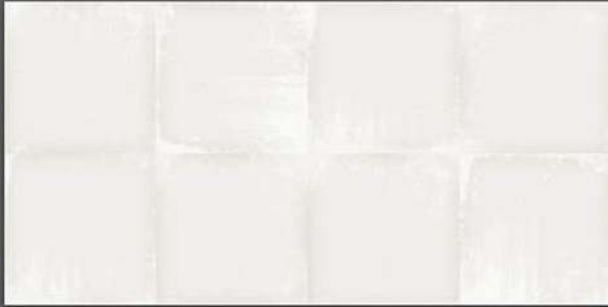


6001_LT-(Plain)
6001_HL2-(Punch)
6001_DK-(Plain)

MATT SERIES



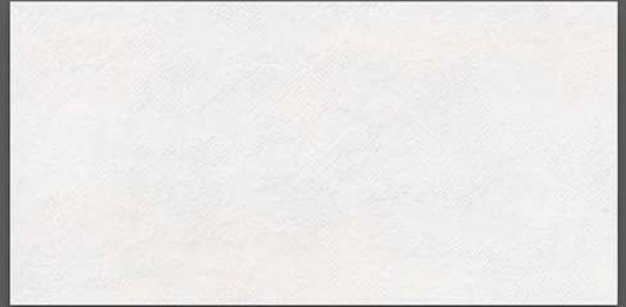
NOVAC
CERAMIC
Committed to Quality



6002_LT-(Punch)
6002_HL1-(Punch)
6002_DK-(Punch)

6002_LT-(Punch)
6002_HL2-(Punch)
6002_DK-(Punch)

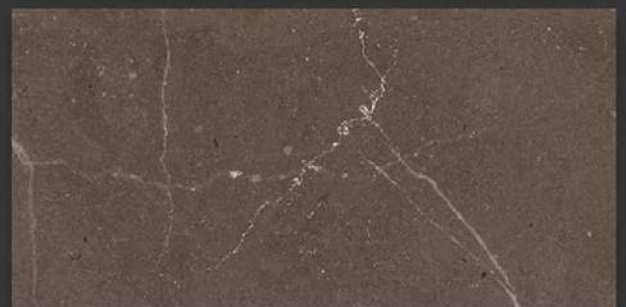
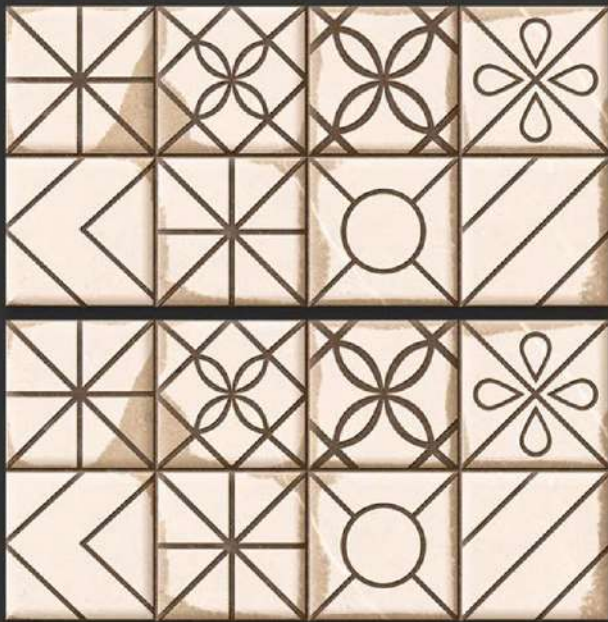
MATT SERIES



6003_LT-(Punch)
6003_HL1-(Punch)
6003_DK-(Punch)

6003_LT-(Punch)
6003_HL2-(Punch)
6003_DK-(Punch)

MATT SERIES



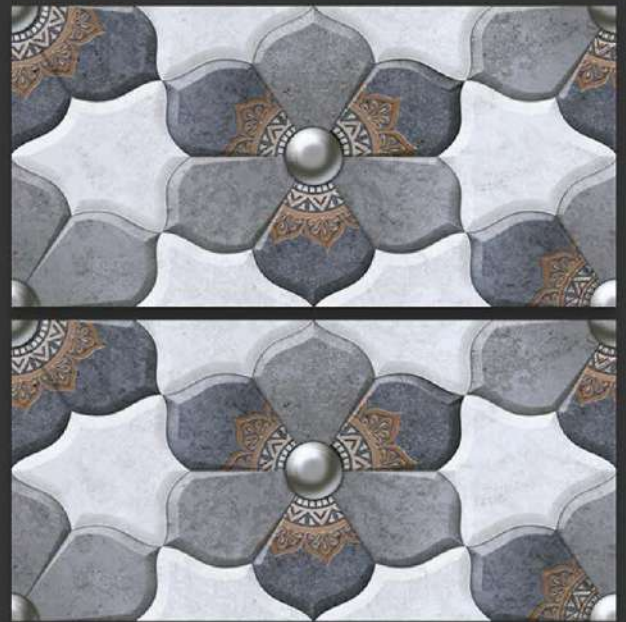
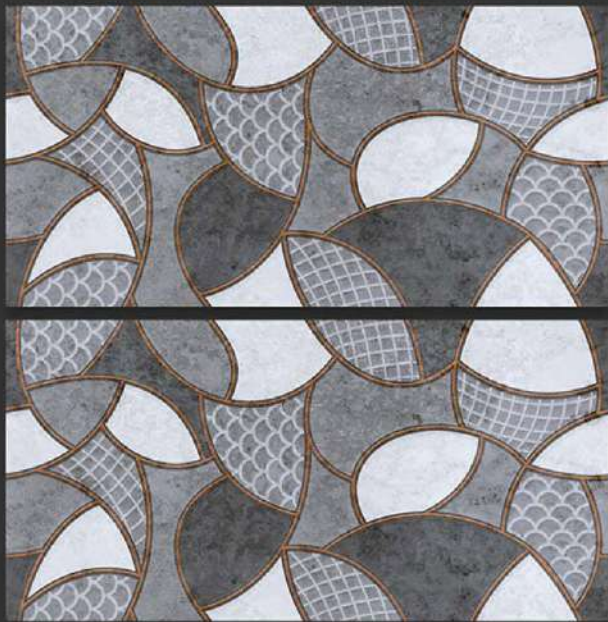
6004_LT-(Random)
6004_HL1-(Punch)
6004_DK-(Random)

6004_LT-(Random)
6004_HL2-(Punch)
6004_DK-(Random)

MATT SERIES



NOVAC
CERAMIC
Committed to Quality



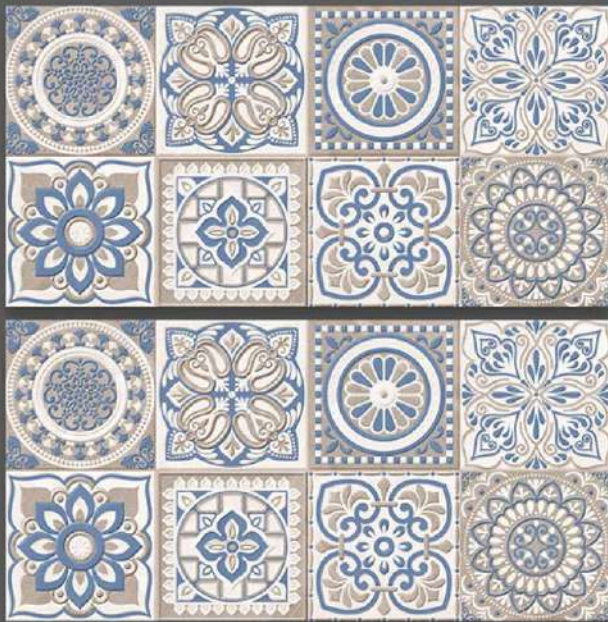
6005_LT-(Plain)
6005_HL1-(Punch)
6005_DK-(Plain)

6005_LT-(Plain)
6005_HL3-(Punch)
6005_DK-(Plain)

MATT SERIES



NOVAC
CERAMIC
Committed to Quality



6008_LT-(Random)
6008_HL1-(Punch)
6008_D-(Random)



6008_LT-(Random)
6008_HL3-(Punch)
6008_DK-(Random)

MATT SERIES



NOVAC
CERAMIC
Committed to Quality

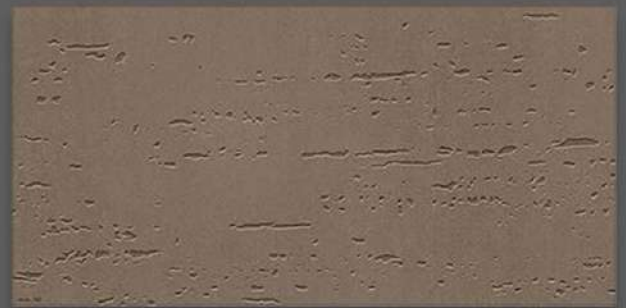
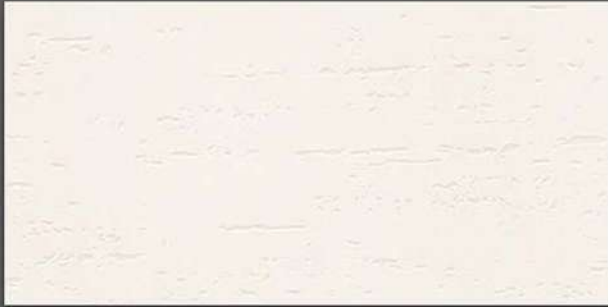


6009_LT-(Random)
6009_HL1-(Punch)
6009_DK-(Random)



6009_LT-(Random)
6009_HL4-(Punch)
6009_DK-(Random)

MATT SERIES



6010_LT-(Punch)

6010_DK-(Punch)

6010_LT-(Punch)

6010_DK-(Punch)

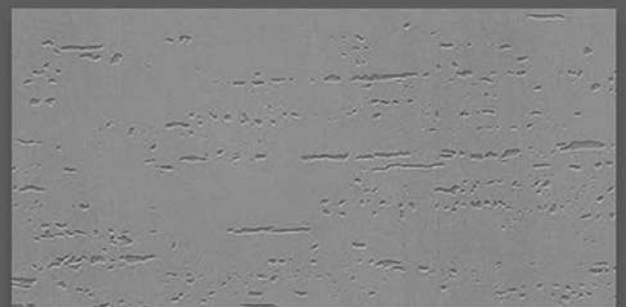
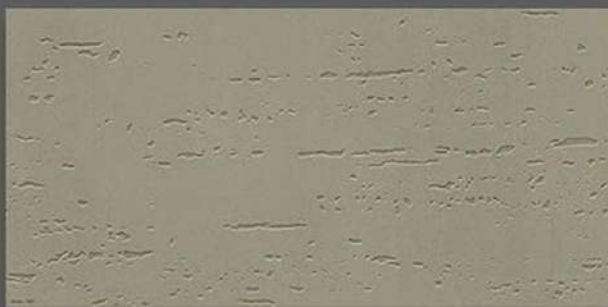
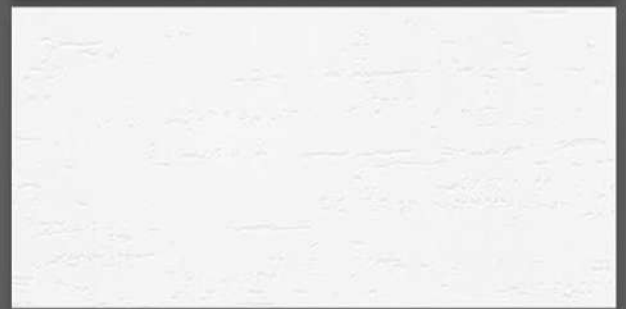
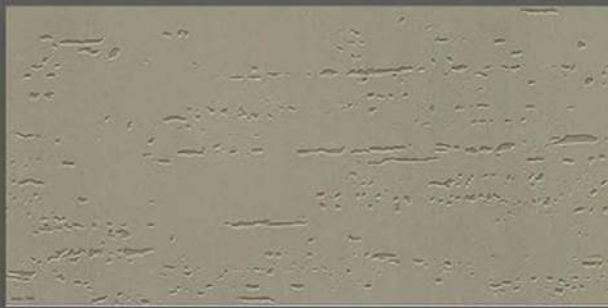
6010_LT-(Punch)

6011_DK-(Punch)

6010_LT-(Punch)

6011_DK-(Punch)

MATT SERIES



6013_LT-(Punch)

6012_DK-(Punch)

6013_LT-(Punch)

6012_DK-(Punch)

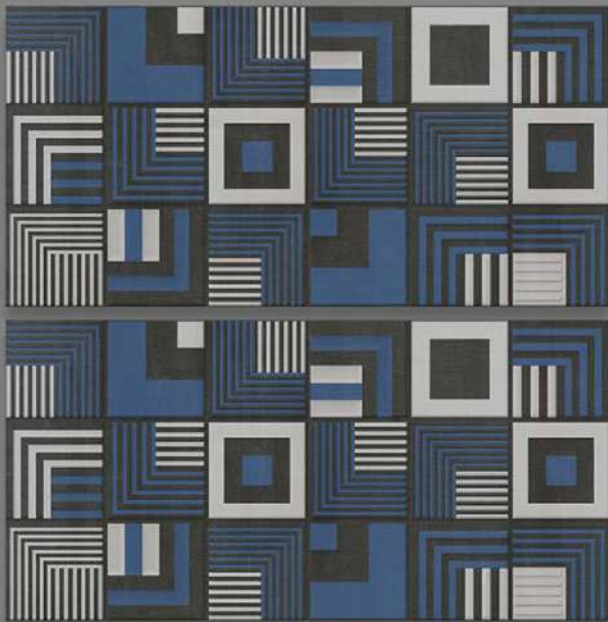
6013_LT-(Punch)

6013_DK-(Punch)

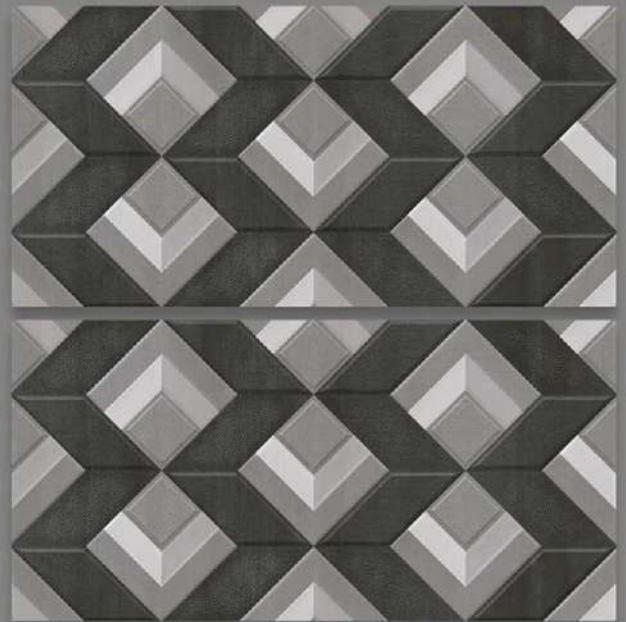
6013_LT-(Punch)

6013_DK-(Punch)

MATT SERIES

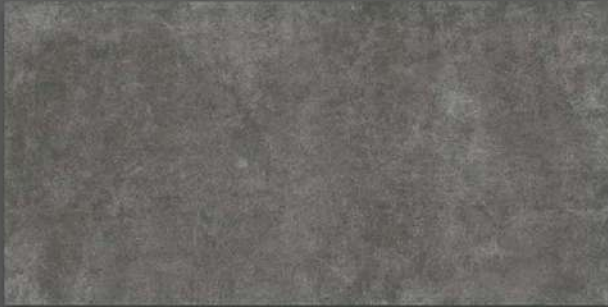


6015_LT-(Plain)
6015_HL1-(Punch)
6015_DK-(Plain)



6015_LT-(Plain)
6015_HL2-(Punch)
6015_DK-(Plain)

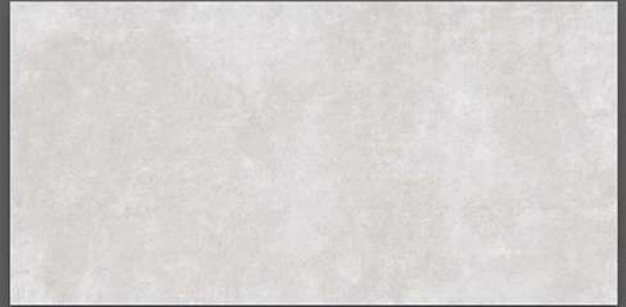
MATT SERIES



6016_DK-(Plain)

6016_HL1-(Plain)

6016_DK-(Plain)



6017_LT-(Plain)

6017_HL1-(Plain)

6017_LT-(Plain)

MATT SERIES

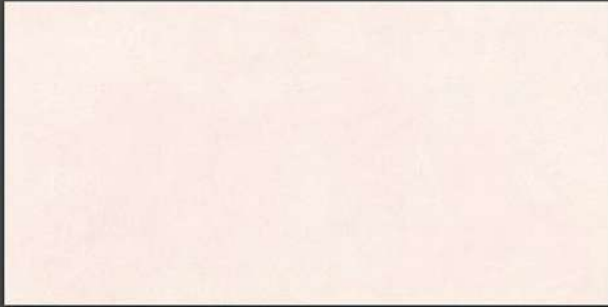


6018_LT-(Random)
6018_HL2-(Punch)
6018_DK-(Random)



6019_LT-(Punch)
6019_HL1-(Punch)
6019_LT-(Punch)

MATT SERIES



6021_LT-(Random)
6021_HL1-(Punch)
6021_DK-(Random)

6021_LT-(Random)
6021_HL2-(Punch)
6021_DK-(Random)

MATT SERIES



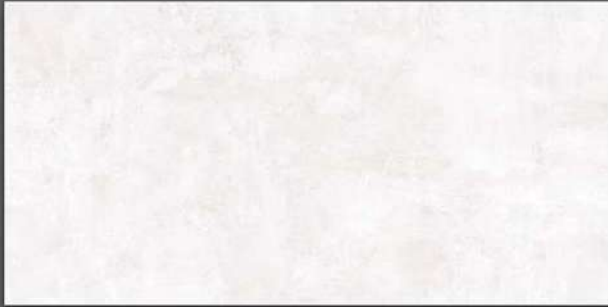
6022_LT-(Punch)
6022_HL1-(Punch)
6022_LT-(Punch)

6022_LT-(Punch)
6022_HL1-(Punch)
6022_LT-(Punch)

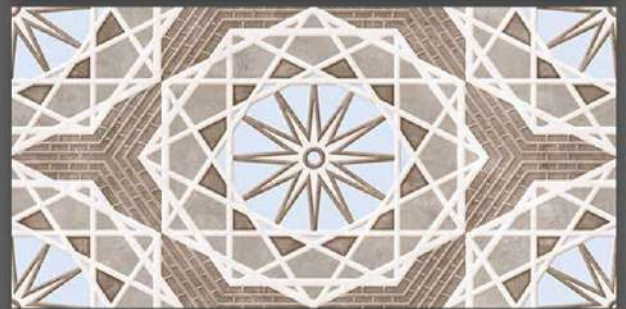
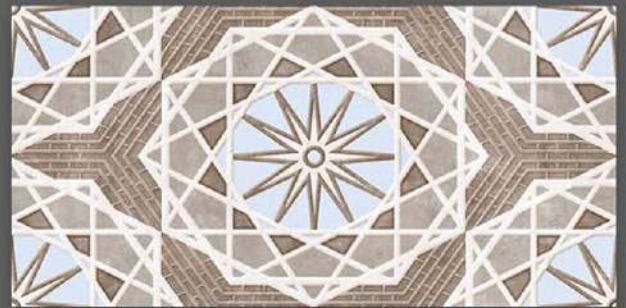
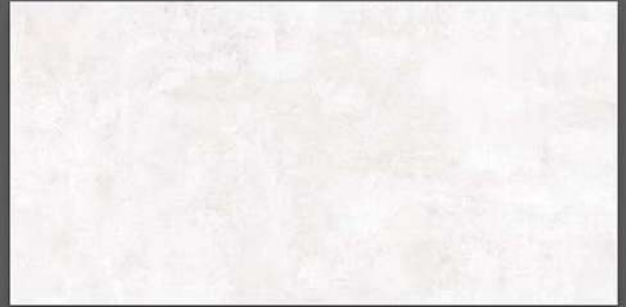
MATT SERIES



NOVAC
CERAMIC
Committed to Quality

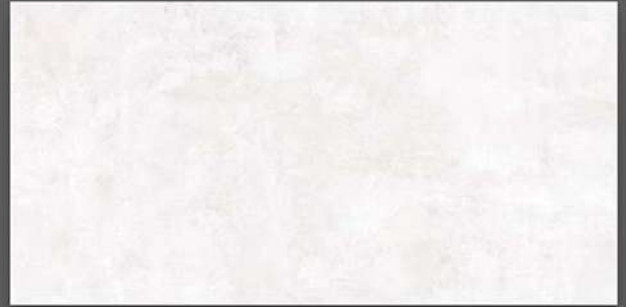
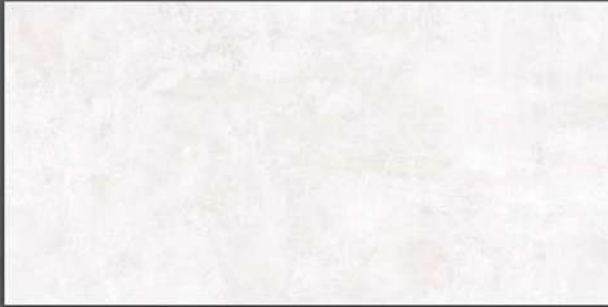


6024_LT-(Plain)
6024_HL1-(Punch)
6024_DK-(Plain)



6024_LT-(Plain)
6024_HL2-(Punch)
6024_DK-(Plain)

MATT SERIES



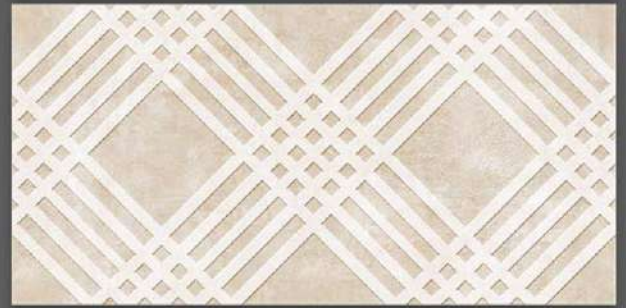
6024_LT-(Plain)
6024_HL3-(Punch)
6024_DK-(Plain)

6024_LT-(Plain)
6024_HL3-(Punch)
6024_DK-(Plain)

MATT SERIES



6025_LT-(Plain)
6025_HL1-(Punch)
6025_LT-(Plain)



6025_LT-(Plain)
6025_HL2-(Punch)
6025_LT-(Plain)

MATT SERIES



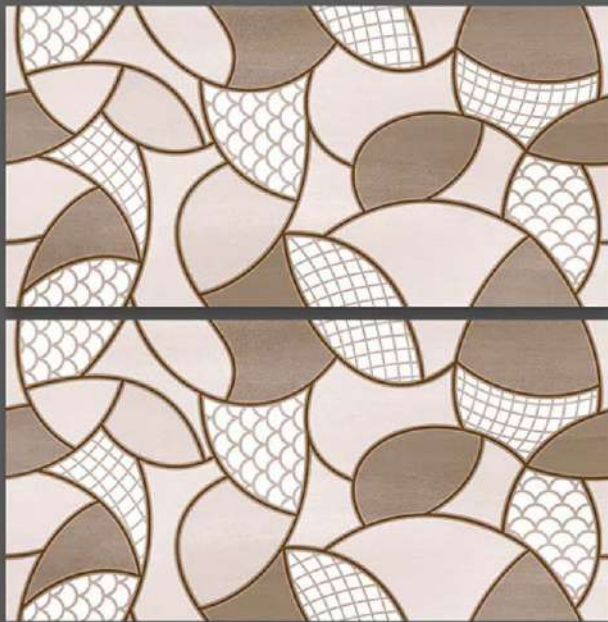
6026_LT-(Punch)
6026_HL1-(Punch)
6026_DK-(Punch)

6026_LT-(Punch)
6026_HL1-(Punch)
6026_DK-(Punch)

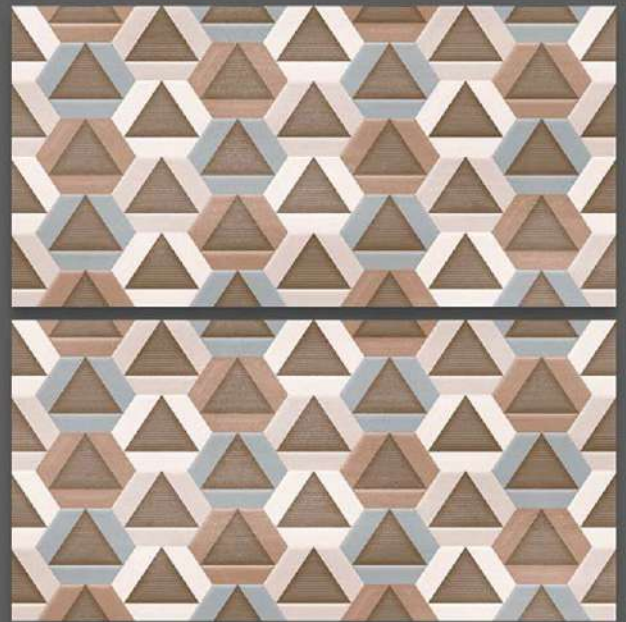
MATT SERIES



NOVAC
CERAMIC
Committed to Quality

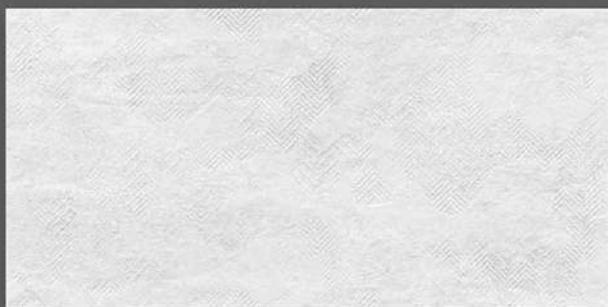
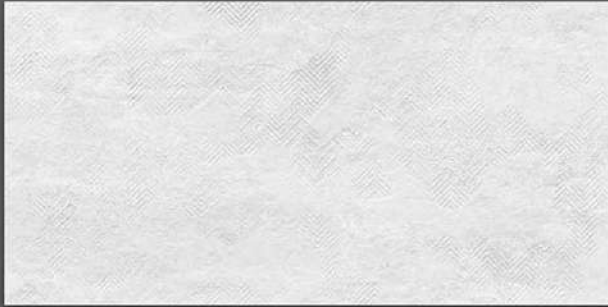


6028_LT-(Random)
6028_HL1-(Punch)
6028_DK-(Punch)

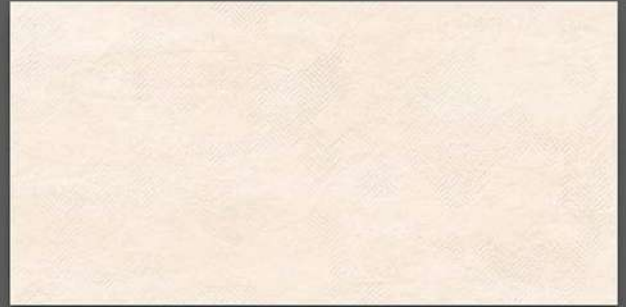


6028_LT-(Random)
6028_HL2-(Punch)
6028_DK-(Random)

MATT SERIES

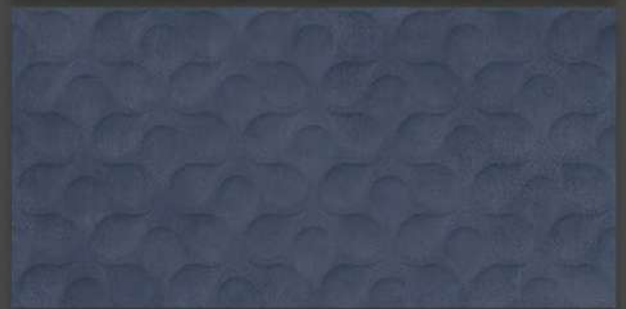
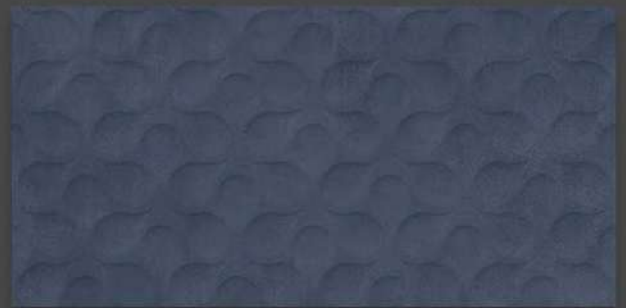
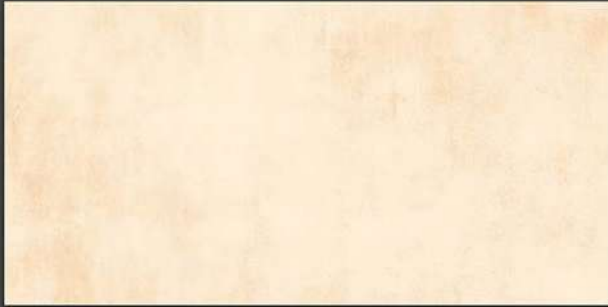


6030_LT-(Punch)
6030_HL1-(Punch)
6030_LT-(Punch)



6031_LT-(Punch)
6031_HL1-(Punch)
6031_DK-(Punch)

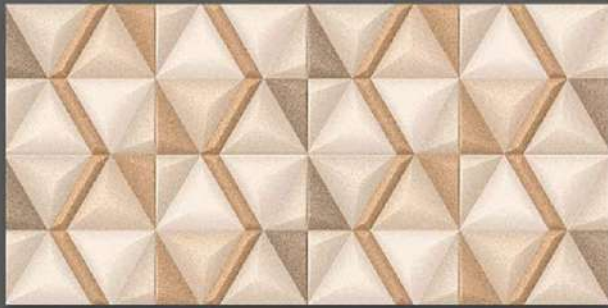
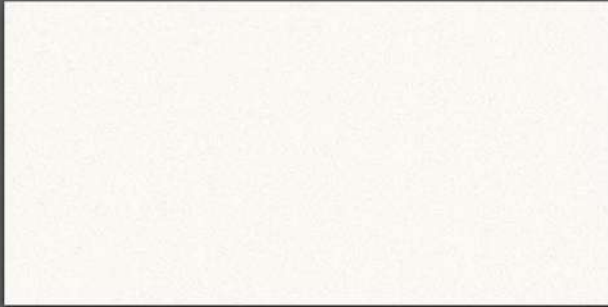
MATT SERIES



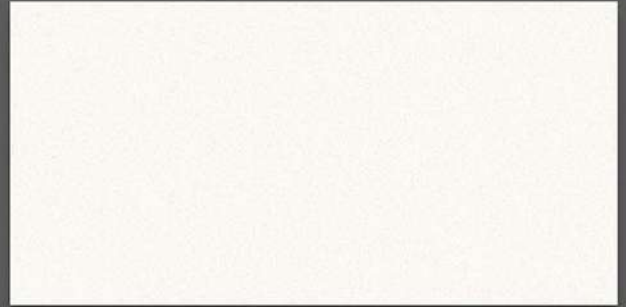
6032_LT-(Random)
6032_HL1-(Plain)
6032_DK-(Random)

6032_LT-(Random)
6032_HL2-(Punch)
6032_DK-(Random)

MATT SERIES



6033_LT-(Plain)
6033_HL1-(Punch)
6033_DK-(Plain)

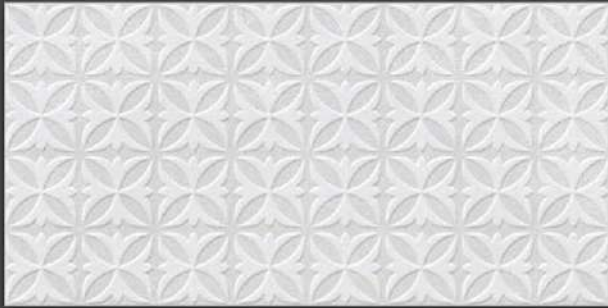


6033_LT-(Plain)
6033_HL2-(Plain)
6033_DK-(Plain)

MATT SERIES



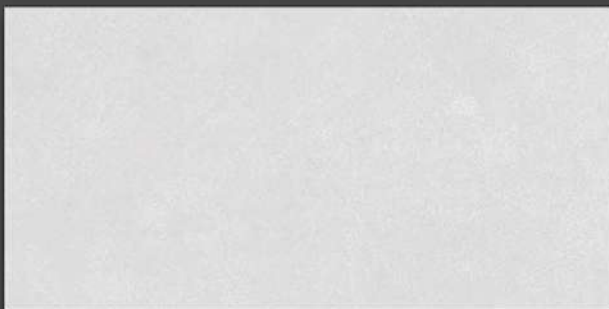
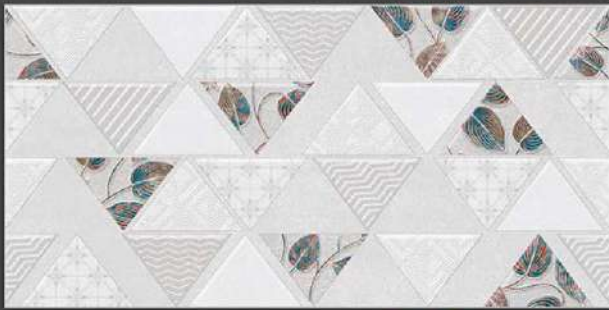
NOVAC
CERAMIC
Committed to Quality



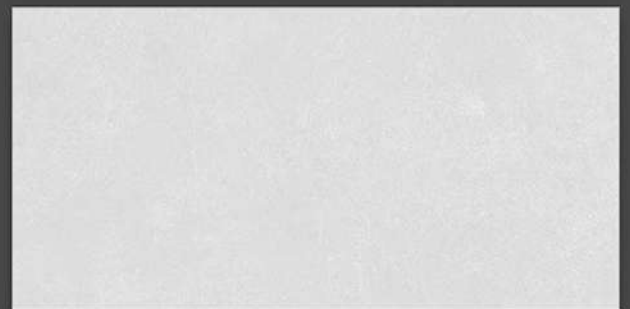
6034_LT-(Random)
6034_HL1-(Punch)
6034_DK-(Random)

6034_LT-(Random)
6034_HL2-(Punch)
6034_DK-(Random)

MATT SERIES



6034_LT-(Random)
6034_HL3-(Punch)
6034_DK-(Random)



6034_LT-(Random)
6034_HL3-(Punch)
6034_DK-(Random)

A photograph of an ornate, multi-story architectural interior, possibly a palace or a historical building, with intricate carvings and balconies. The lighting is dramatic, highlighting the details of the architecture.

MATT SOUTH SERIES

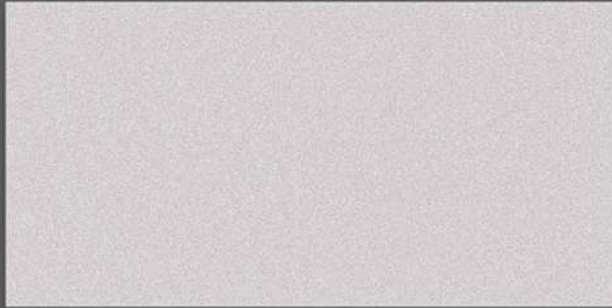


Company makes emphasis on quality measures themost. The total quilty management principles the constant practice of improving in technology and manpower knowledge helps company to improve quilty on regular basis.

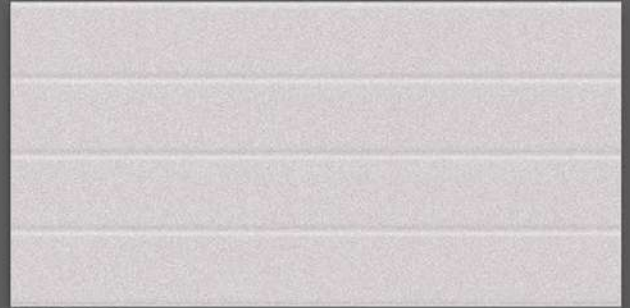
South-Matt-Series



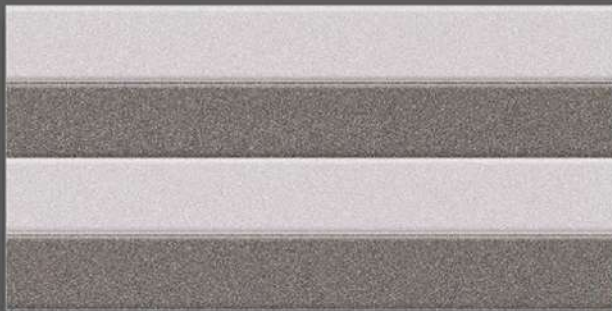
NOVAC
CERAMIC
Committed to Quality



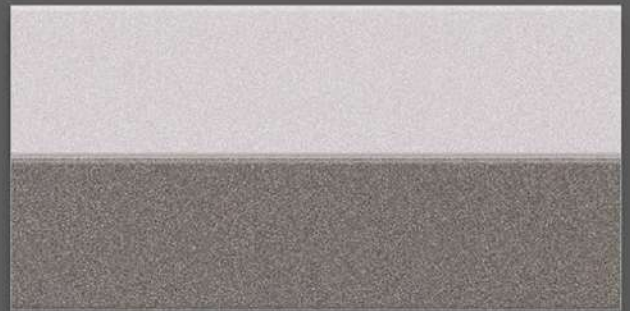
6038-LT-(Plain)



6038-LT2-(Punch)



6038-HL1-(Punch)



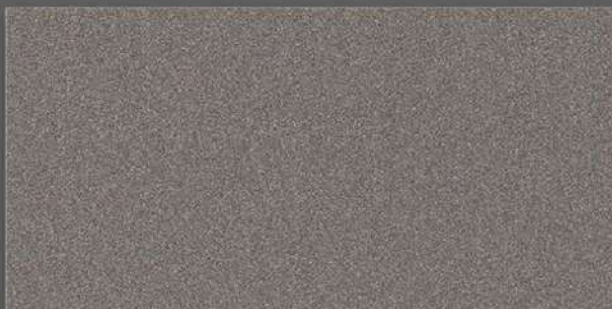
6038-HL2-(Punch)



6038-HL1-(Punch)



6038-HL2-(Punch)



6038-DK-(Plain)

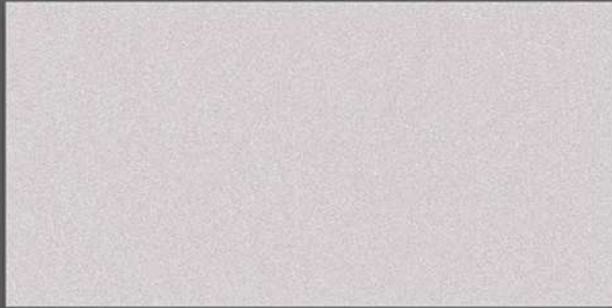


6038-DK2-(Punch)

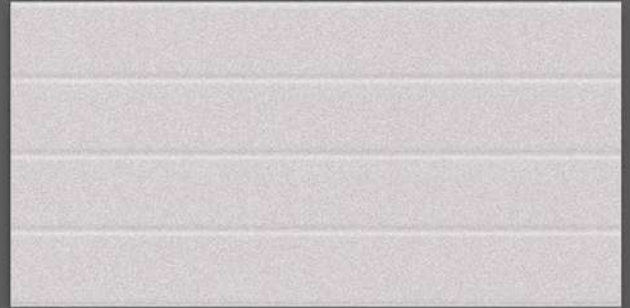
South-Matt-Series



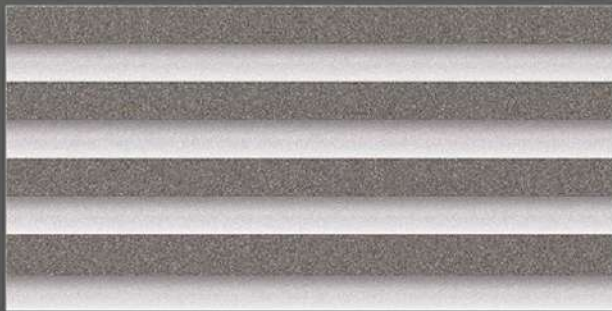
NOVAC
CERAMIC
Committed to Quality



6038-LT-(Plain)



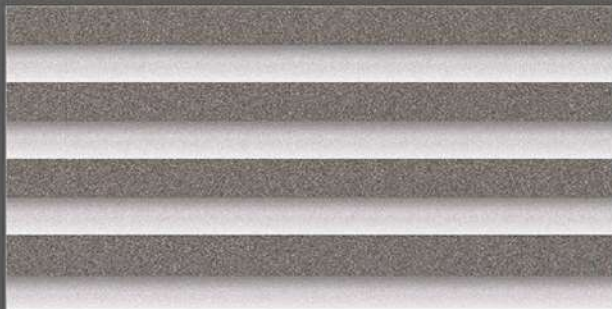
6038-LT2-(Punch)



6038-HL3-(Punch)



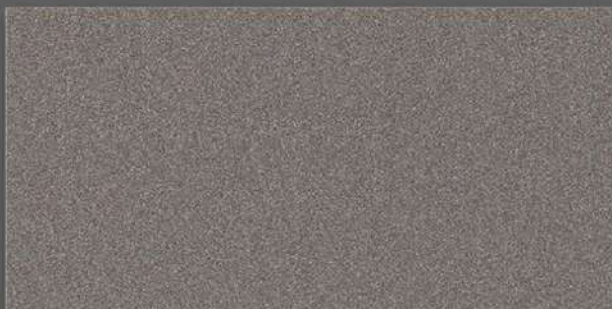
6038-HL4-(Punch)



6038-HL3-(Punch)



6038-HL4-(Punch)



6038-DK-(Plain)



6038-DK2-(Punch)

South-Matt-Series



NOVAC
CERAMIC
Committed to Quality



6039-LT-(Plain)



6039-LT2-(Punch)



6039-HL1-(Punch)



6039-HL2-(Punch)



6039-HL1-(Punch)



6039-HL2-(Punch)



6039-DK-(Plain)

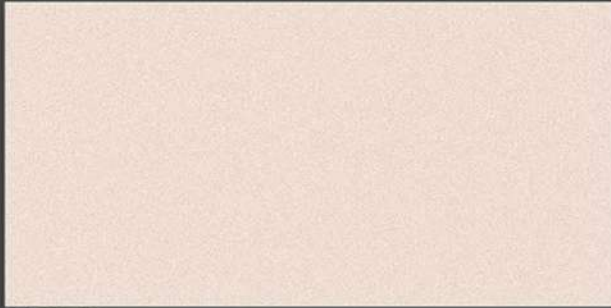


6039-DK2-(Punch)

South-Matt-Series



NOVAC
CERAMIC
Committed to Quality



6039-LT-(Plain)



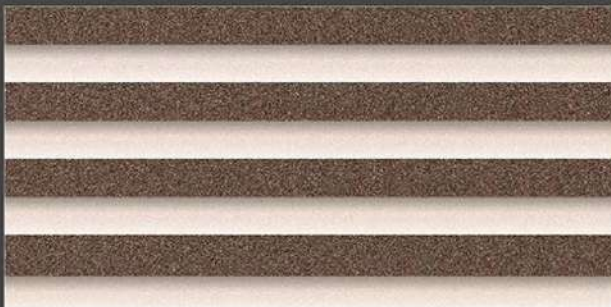
6039-LT2-(Punch)



6039-HL3-(Punch)



6039-HL4-(Punch)



6039-HL3-(Punch)



6039-HL4-(Punch)



6039-DK-(Plain)

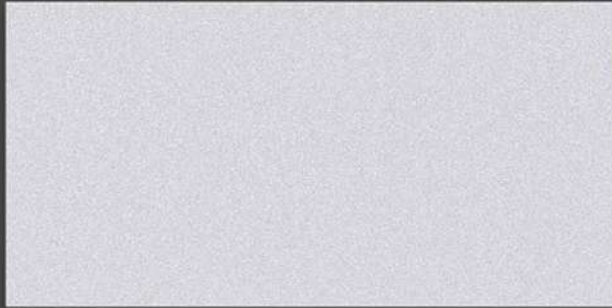


6039-DK2-(Punch)

South-Matt-Series



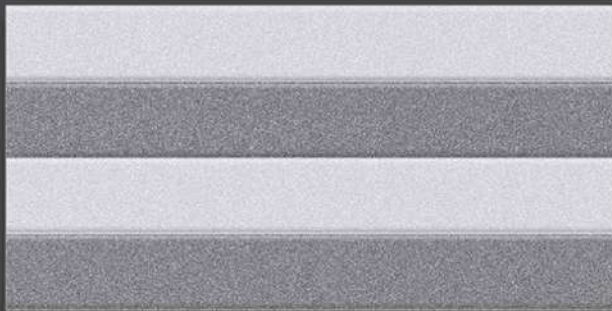
NOVAC
CERAMIC
Committed to Quality



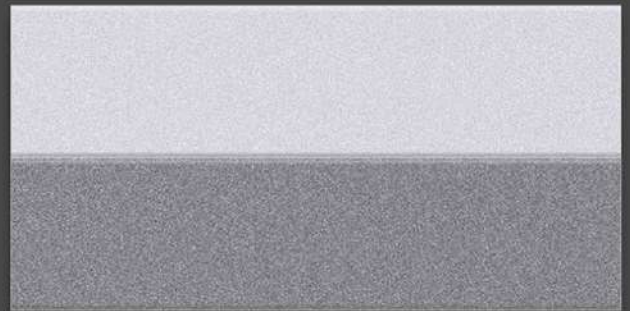
6040-LT-(Plain)



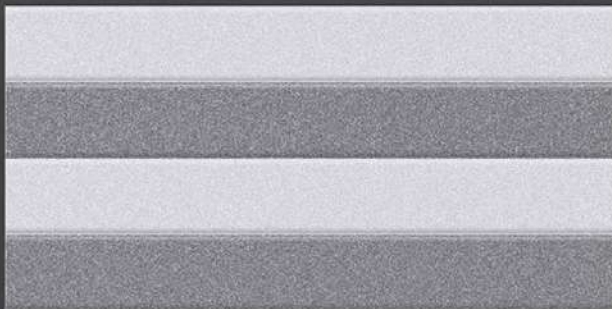
6040-LT2-(Punch)



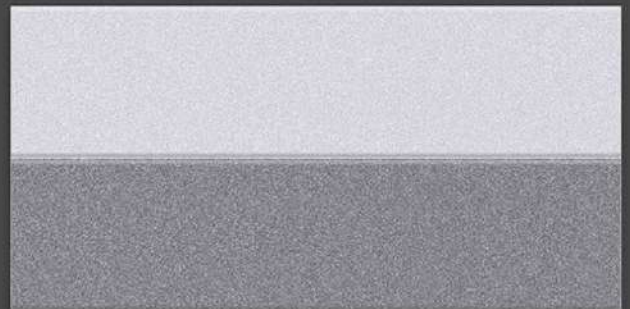
6040-HL1-(Punch)



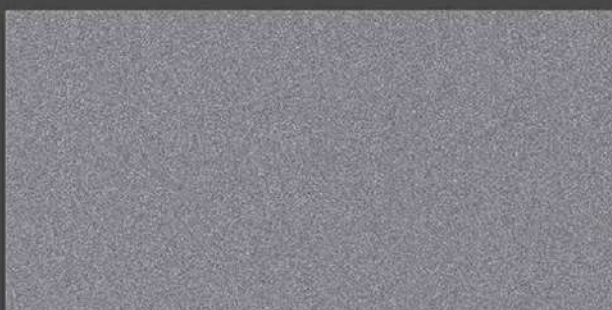
6040-HL2-(Punch)



6040-HL1-(Punch)



6040-HL2-(Punch)



6040-DK-(Plain)

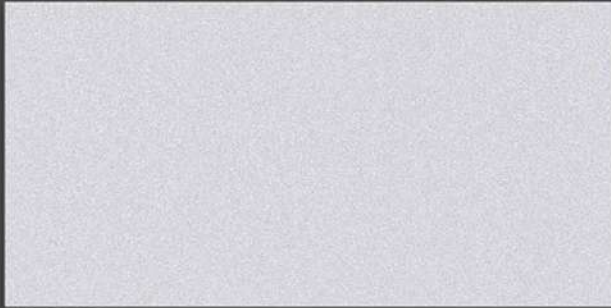


6040-DK2-(Punch)

South-Matt-Series



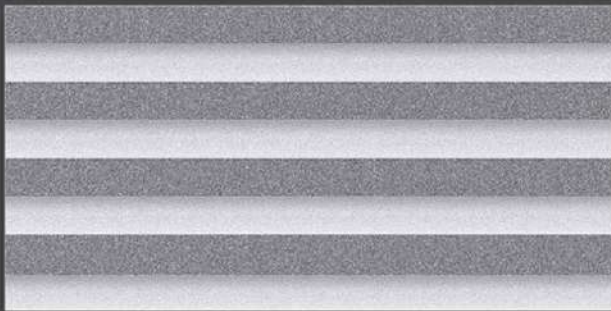
NOVAC
CERAMIC
Committed to Quality



6040-LT-(Plain)



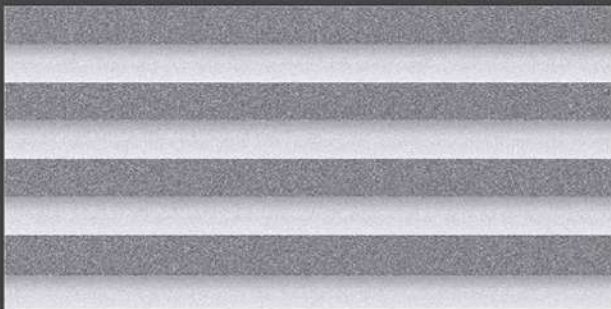
6040-LT2-(Punch)



6040-HL3-(Punch)



6040-HL4-(Punch)



6040-HL3-(Punch)



6040-HL4-(Punch)



6040-DK-(Plain)

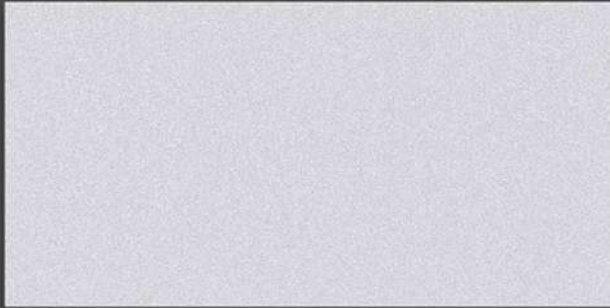


6040-DK2-(Punch)

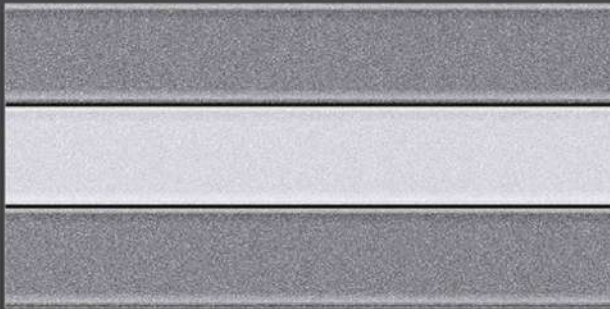
South-Matt-Series



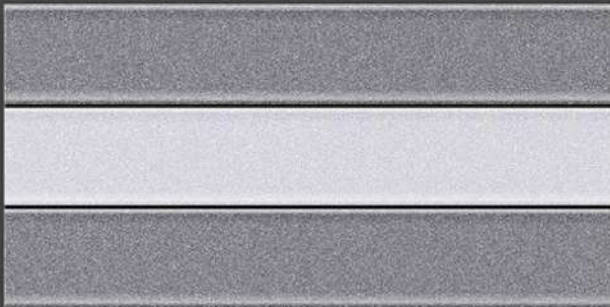
NOVAC
CERAMIC
Committed to Quality



6040-LT-(Plain)



6040-HL5-(Punch)



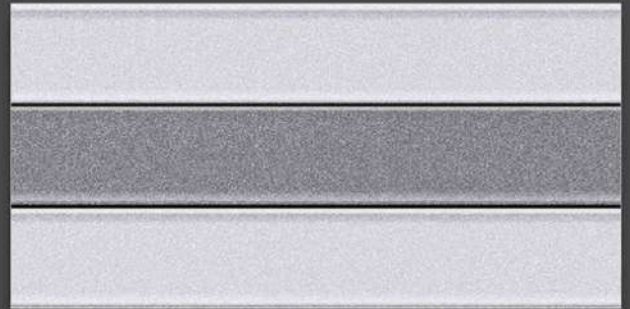
6040-HL5-(Punch)



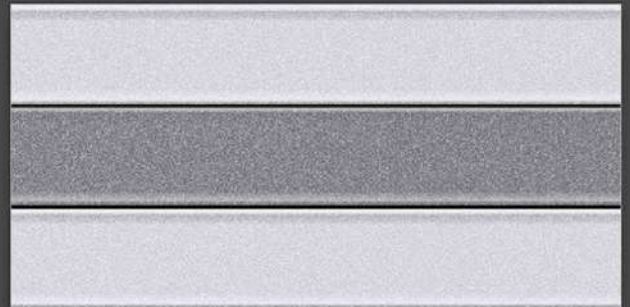
6040-DK-(Plain)



6040-LT2-(Punch)



6040-HL6-(Punch)



6040-HL6-(Punch)

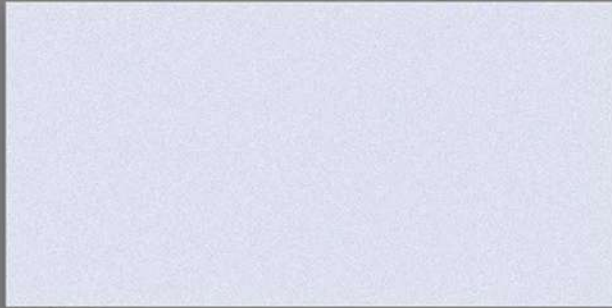


6040-DK2-(Punch)

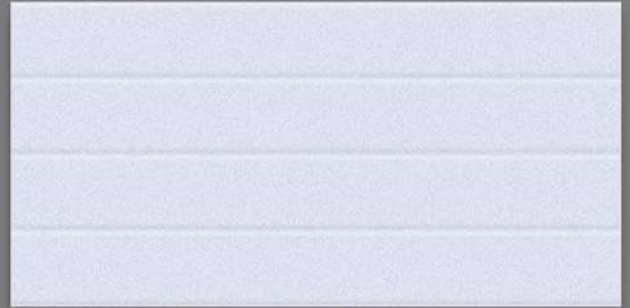
South-Matt-Series



NOVAC
CERAMIC
Committed to Quality



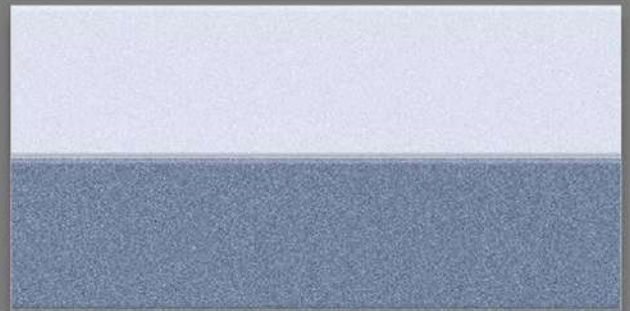
6041-LT-(Plain)



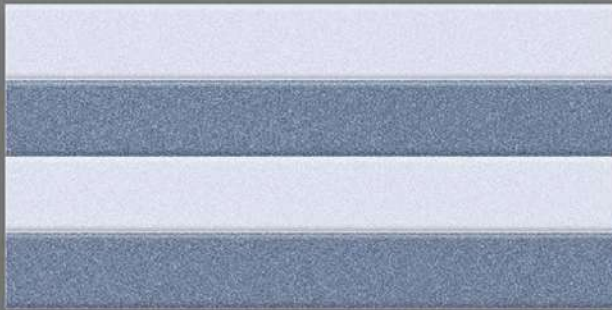
6041-LT2-(Punch)



6041-HL1-(Punch)



6041-HL2-(Punch)



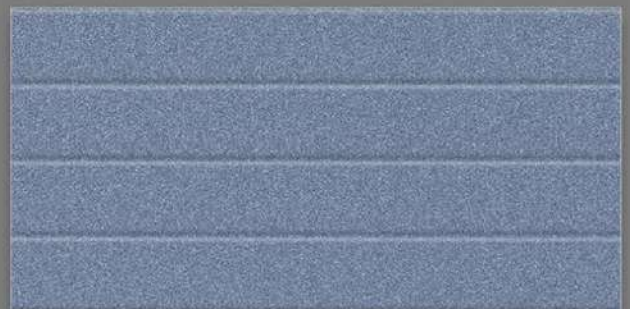
6041-HL1-(Punch)



6041-HL2-(Punch)



6041-DK-(Plain)

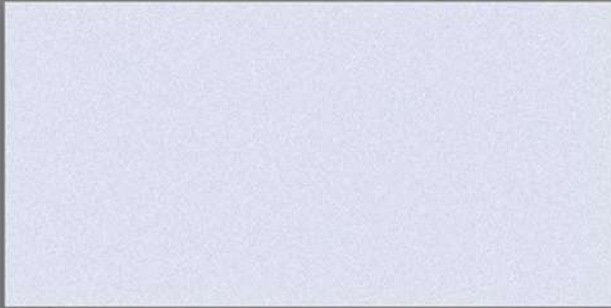


6041-DK2-(Punch)

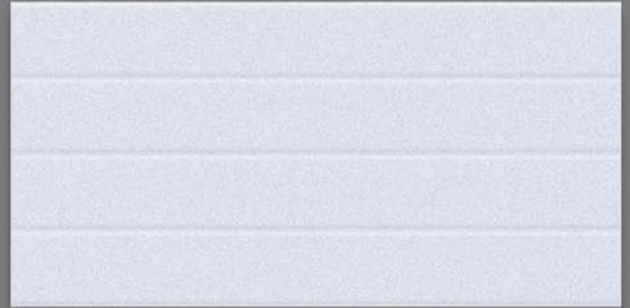
South-Matt-Series



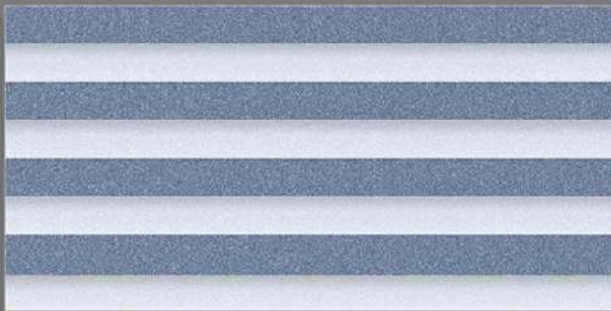
NOVAC
CERAMIC
Committed to Quality



6041-LT-(Plain)



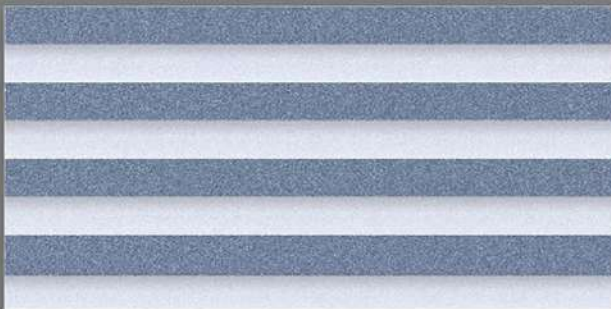
6041-LT2-(Punch)



6041-HL3-(Punch)



6041-HL4-(Punch)



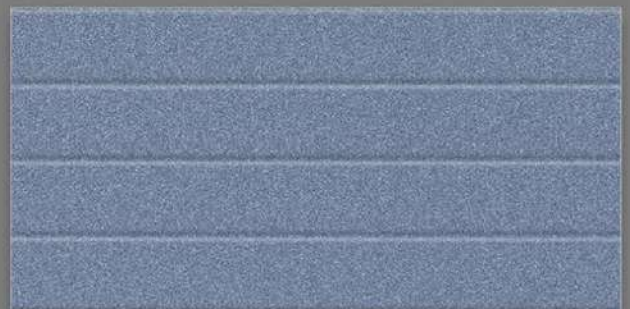
6041-HL3-(Punch)



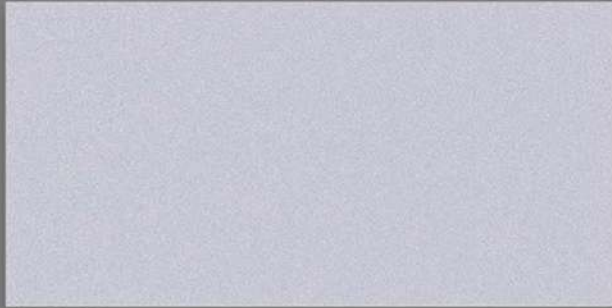
6041-HL4-(Punch)



6041-DK-(Plain)



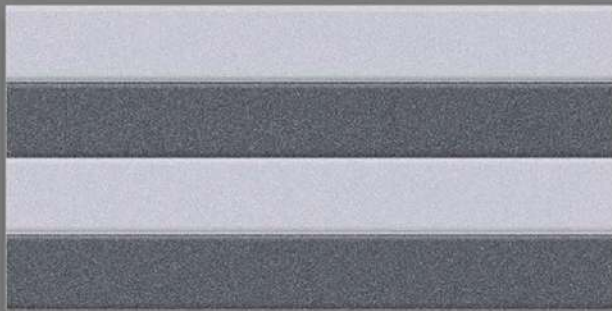
6041-DK2-(Punch)



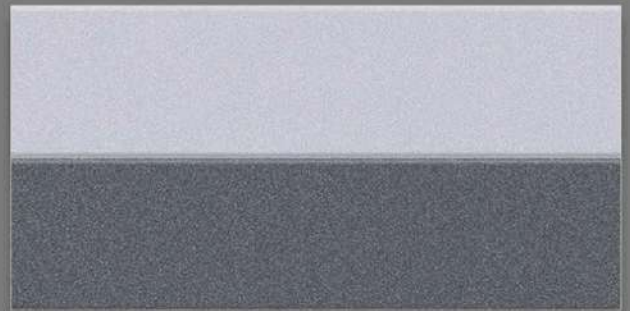
6042-LT-(Plain)



6042-LT2-(Punch)



6042-HL1-(Punch)



6042-HL2-(Punch)



6042-HL1-(Punch)



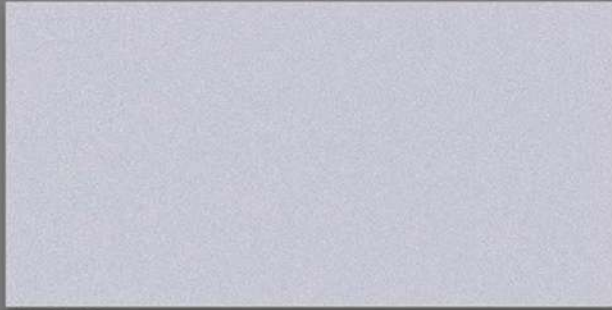
6042-HL2-(Punch)



6042-DK-(Plain)



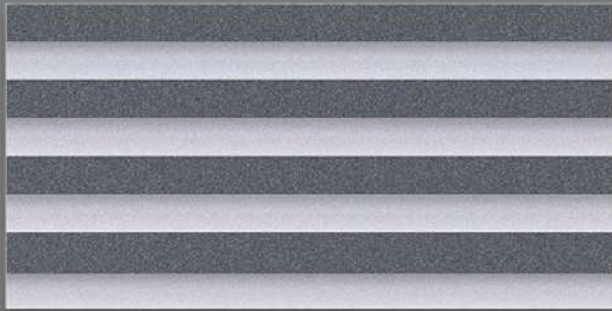
6042-DK2-(Punch)



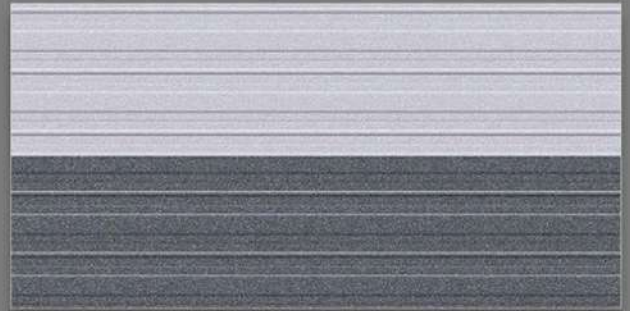
6042-LT-(Plain)



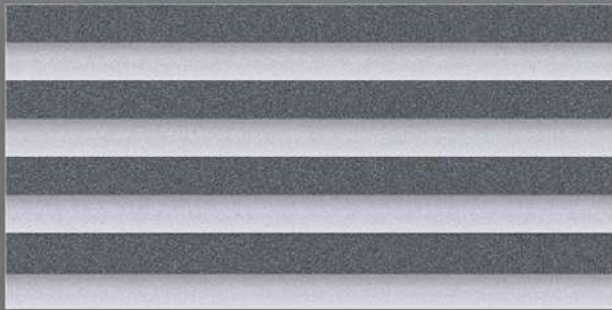
6042-LT2-(Punch)



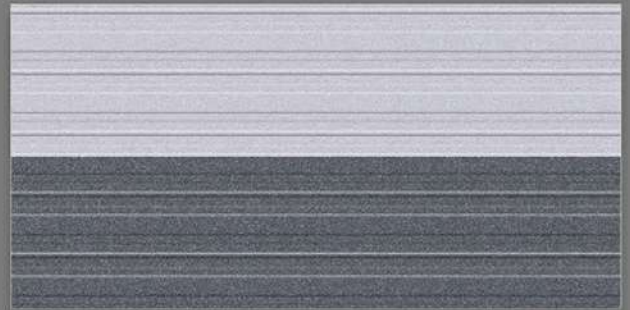
6042-HL3-(Punch)



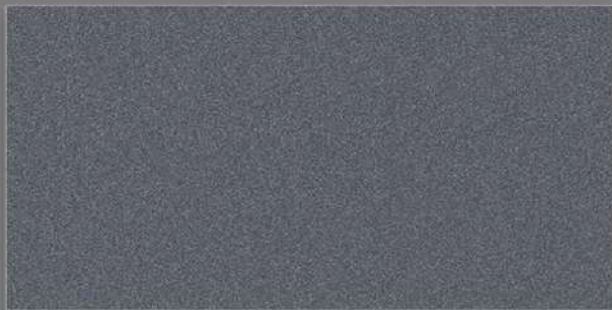
6042-HL4-(Punch)



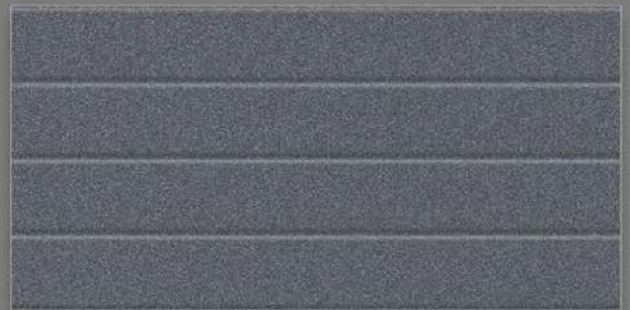
6042-HL3-(Punch)



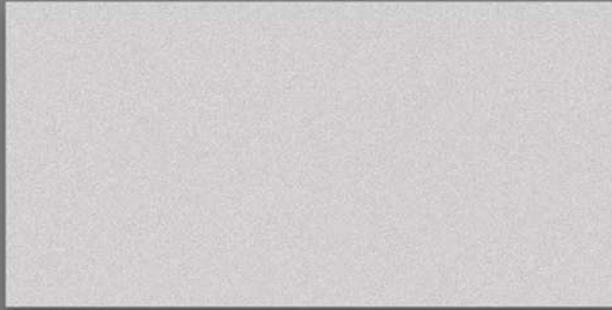
6042-HL4-(Punch)



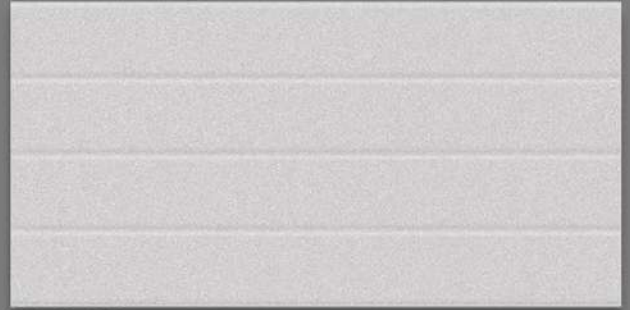
6042-DK-(Plain)



6042-DK2-(Punch)



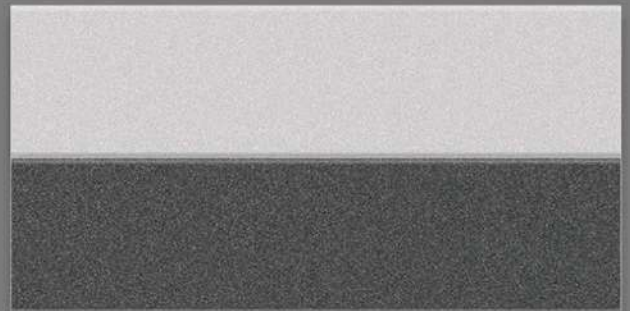
6043-LT-(Plain)



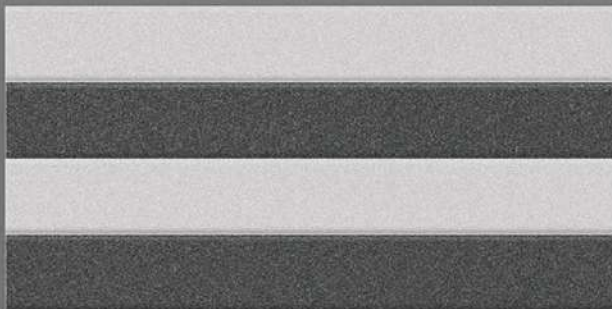
6043-LT2-(Punch)



6043-HL1-(Punch)



6043-HL2-(Punch)



6043-HL1-(Punch)



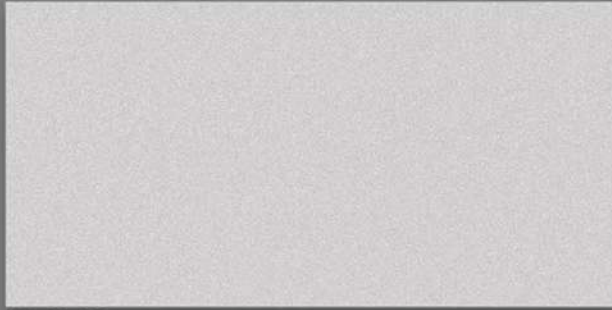
6043-HL2-(Punch)



6043-DK-(Plain)



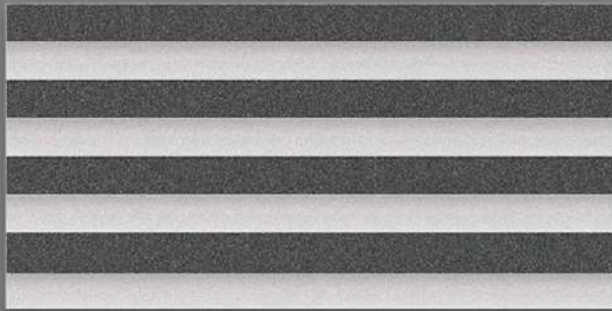
6043-DK2-(Punch)



6043-LT-(Plain)



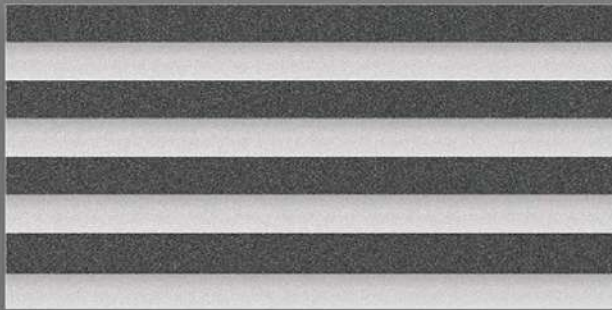
6043-LT2-(Punch)



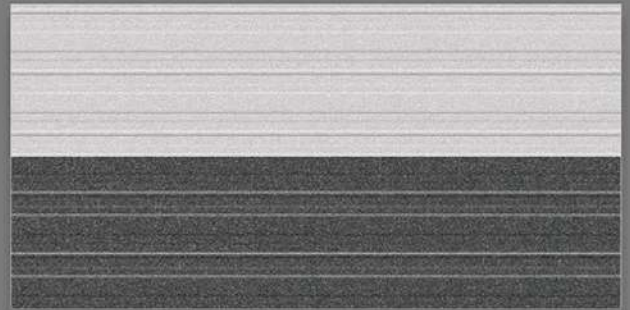
6043-HL3-(Punch)



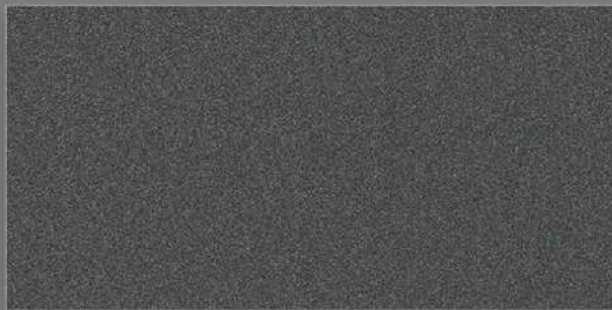
6043-HL4-(Punch)



6043-HL3-(Punch)



6043-HL4-(Punch)



6043-DK-(Plain)



6043-DK2-(Punch)

South-Matt-Series



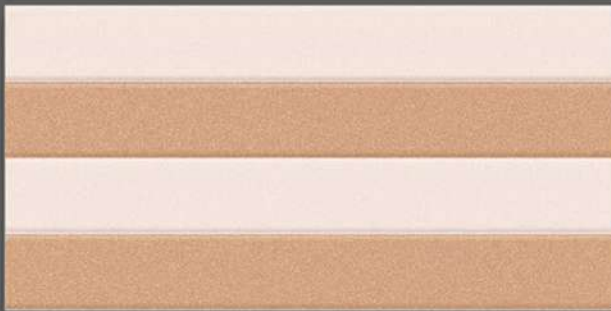
NOVAC
CERAMIC
Committed to Quality



6044-LT-(Plain)



6044-LT2-(Punch)



6044-HL1-(Punch)



6044-HL2-(Punch)



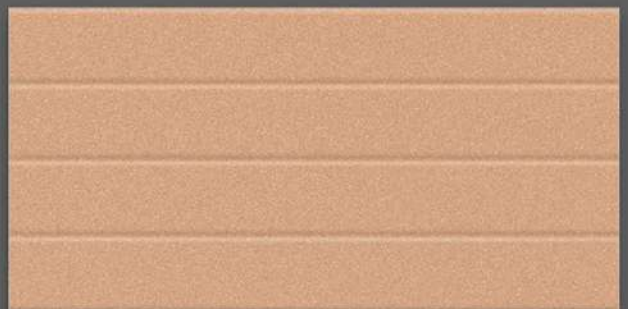
6044-HL1-(Punch)



6044-HL2-(Punch)



6044-DK1-(Plain)



6044-DK2-(Punch)

South-Matt-Series



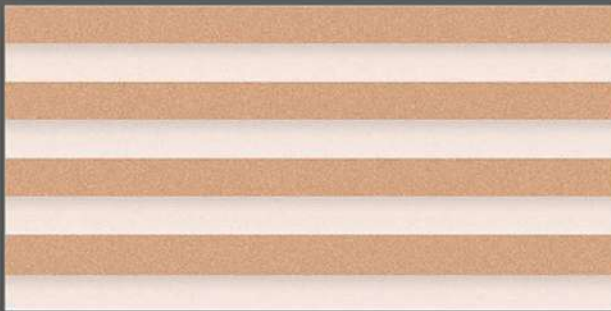
NOVAC
CERAMIC
Committed to Quality



6044-LT-(Plain)



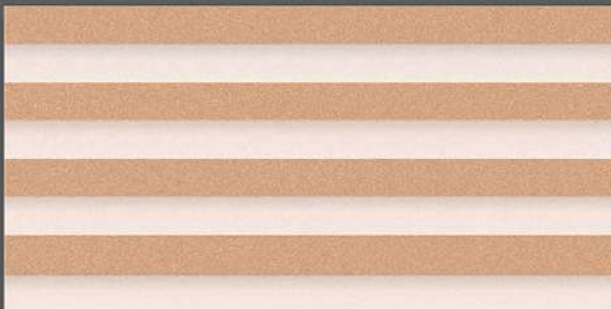
6044-LT2-(Punch)



6044-HL3-(Punch)



6044-HL4-(Punch)



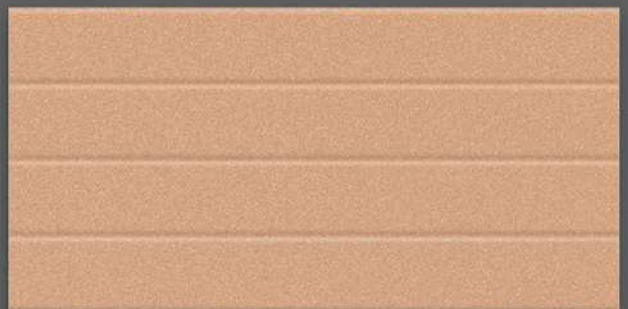
6044-HL3-(Punch)



6044-HL4-(Punch)



6044-DK-(Plain)



6044-DK2-(Punch)

South-Matt-Series



NOVAC
CERAMIC
Committed to Quality



6045-LT-(Plain)



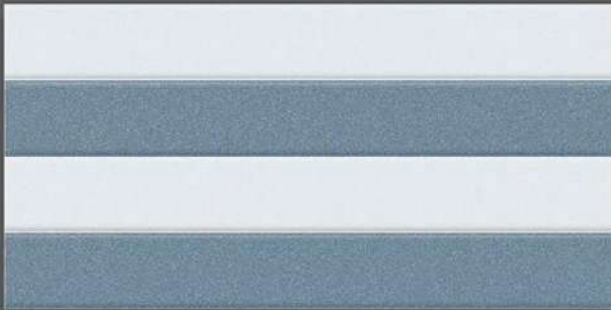
6045-LT2-(Punch)



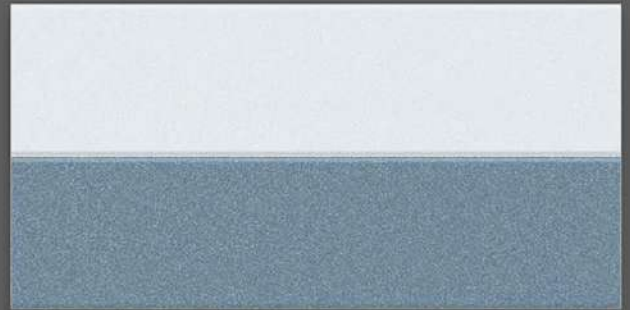
6045-HL1-(Punch)



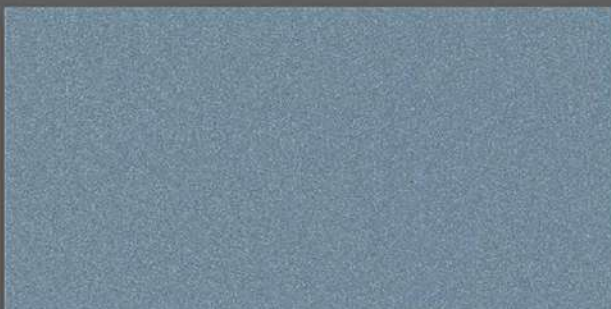
6045-HL2-(Punch)



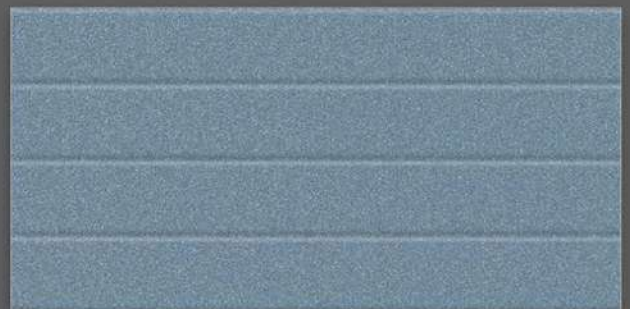
6045-HL1-(Punch)



6045-HL2-(Punch)



6045-DK-(Plain)



6045-DK2-(Punch)

South-Matt-Series



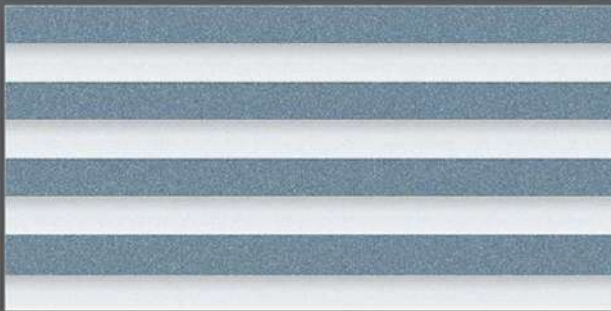
NOVAC
CERAMIC
Committed to Quality



6045-LT-(Plain)



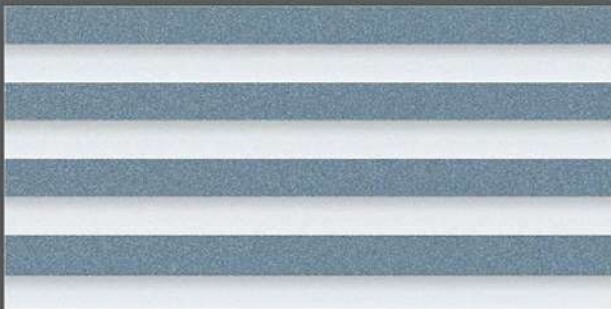
6045-LT2-(Punch)



6045-HL3-(Punch)



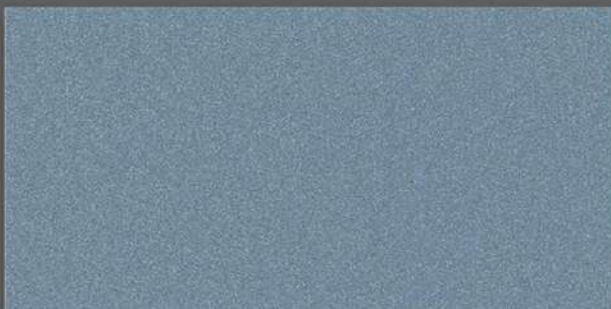
6045-HL4-(Punch)



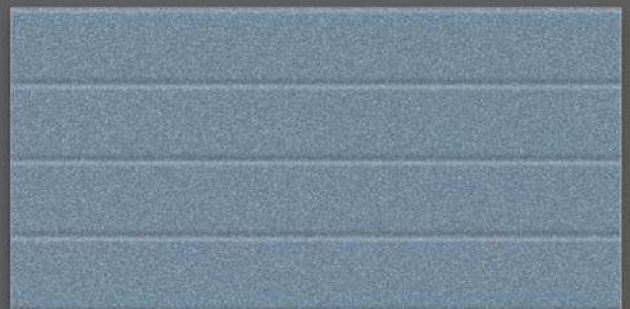
6045-HL3-(Punch)



6045-HL4-(Punch)



6045-DK-(Plain)

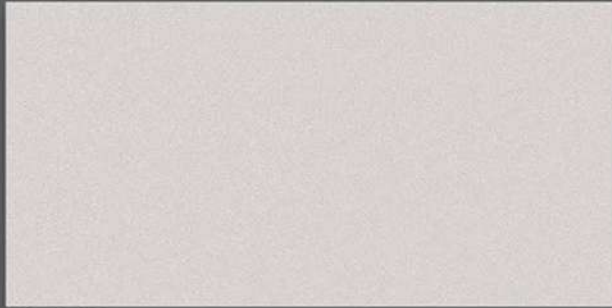


6045-DK2-(Punch)

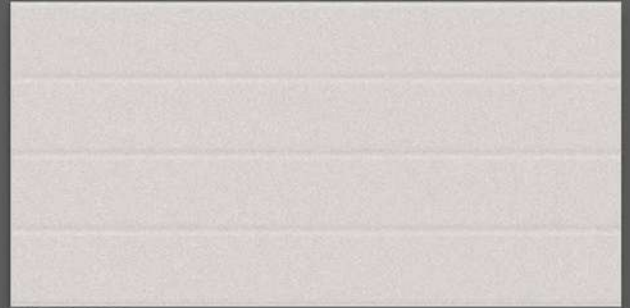
South-Matt-Series



NOVAC
CERAMIC
Committed to Quality



6046-LT-(Plain)



6046-LT2-(Punch)



6046-HL1-(Punch)



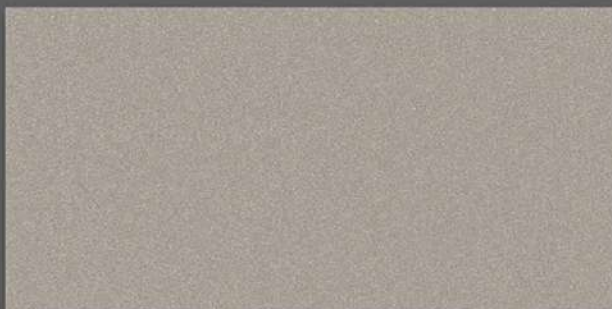
6046-HL2-(Punch)



6046-HL1-(Punch)



6046-HL2-(Punch)



6046-DK-(Plain)

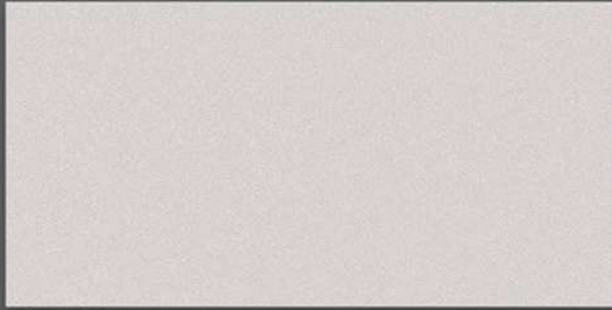


6046-DK2-(Punch)

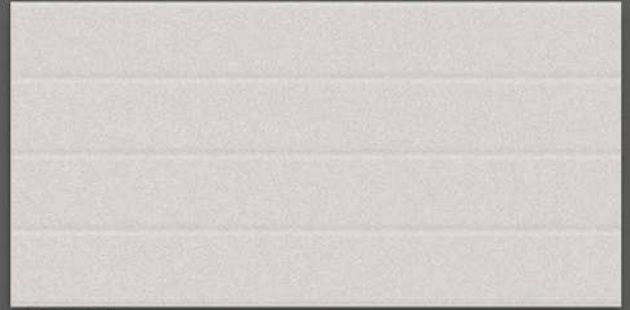
South-Matt-Series



NOVAC
CERAMIC
Committed to Quality



6046-LT-(Plain)



6046-LT2-(Punch)



6046-HL3-(Punch)



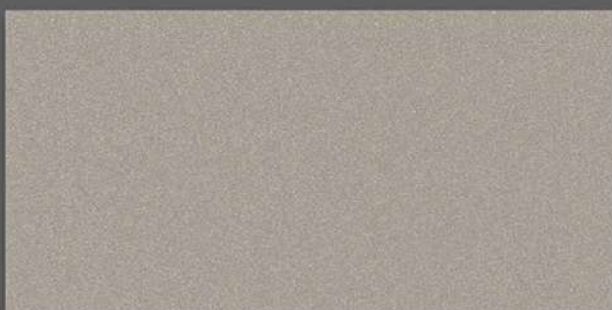
6046-HL4-(Punch)



6046-HL3-(Punch)



6046-HL4-(Punch)



6046-DK-(Plain)

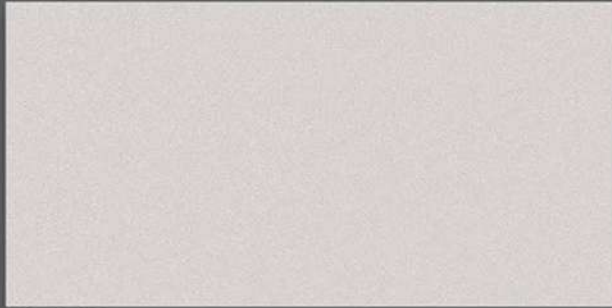


6046-DK2-(Punch)

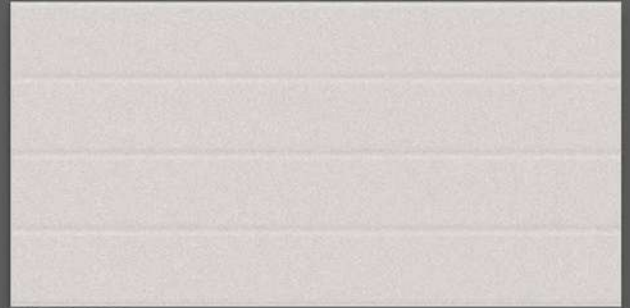
South-Matt-Series



NOVAC
CERAMIC
Committed to Quality



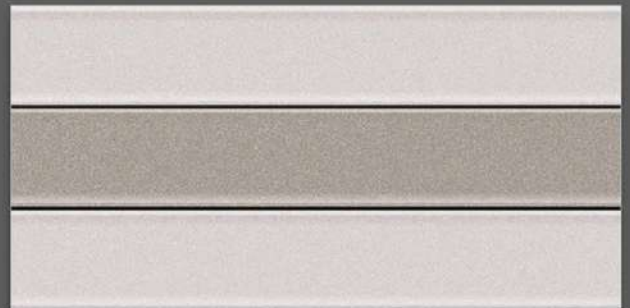
6046-LT-(Plain)



6046-LT2-(Punch)



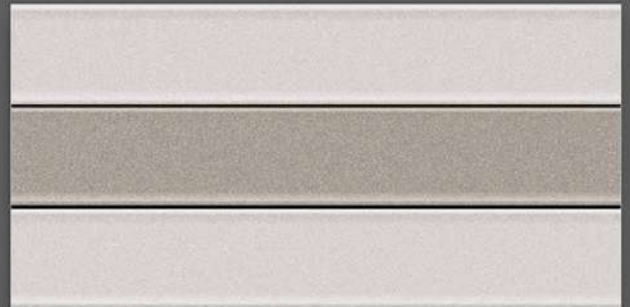
6046-HL5-(Punch)



6046-HL6-(Punch)



6046-HL5-(Punch)



6046-HL6-(Punch)



6046-DK-(Plain)



6046-DK2-(Punch)

South-Matt-Series



NOVAC
CERAMIC
Committed to Quality



6047-LT-(Plain)



6047-LT2-(Punch)



6047-HL1-(Punch)



6047-HL2-(Punch)



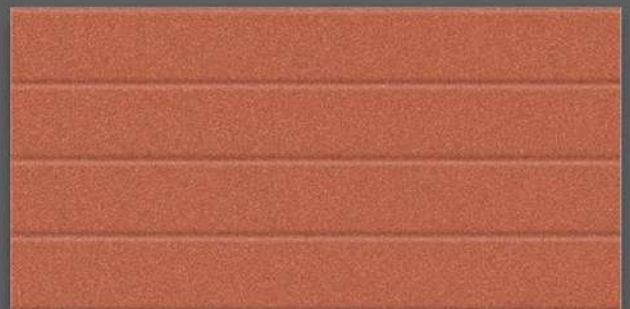
6047-HL1-(Punch)



6047-HL2-(Punch)



6047-DK-(Plain)



6047-DK2-(Punch)

South-Matt-Series



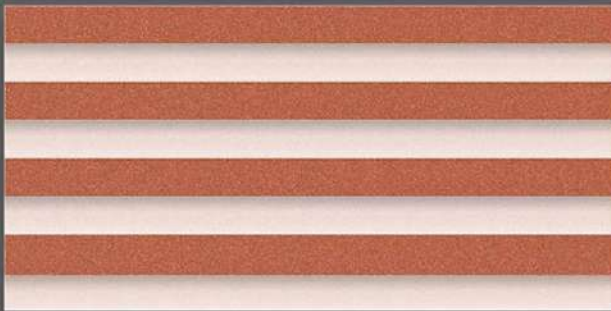
NOVAC
CERAMIC
Committed to Quality



6047-LT-(Plain)



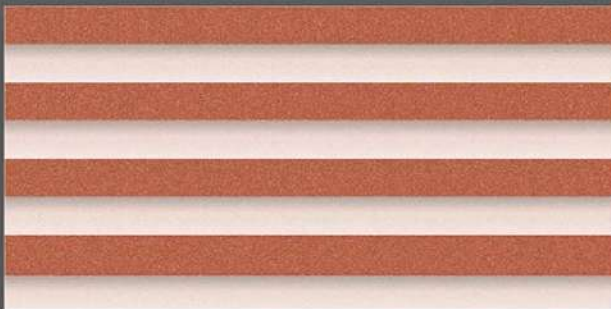
6047-LT2-(Punch)



6047-HL3-(Punch)



6047-HL4-(Punch)



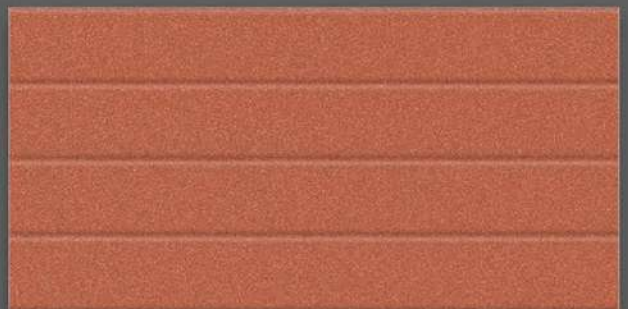
6047-HL3-(Punch)



6047-HL4-(Punch)



6047-DK-(Plain)

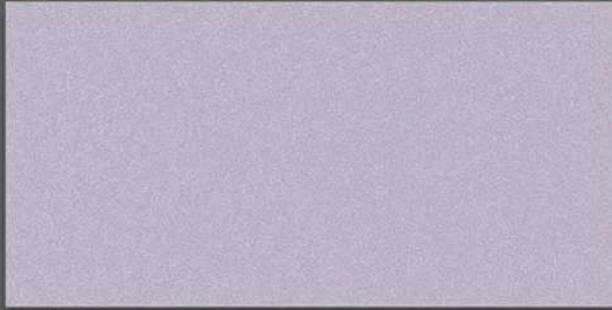


6047-DK2-(Punch)

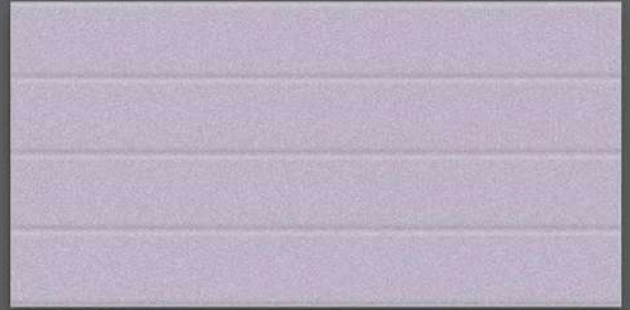
South-Matt-Series



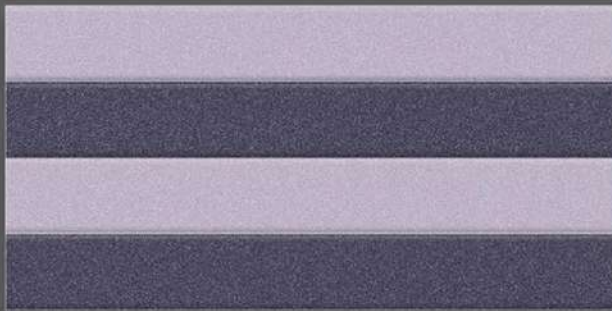
NOVAC
CERAMIC
Committed to Quality



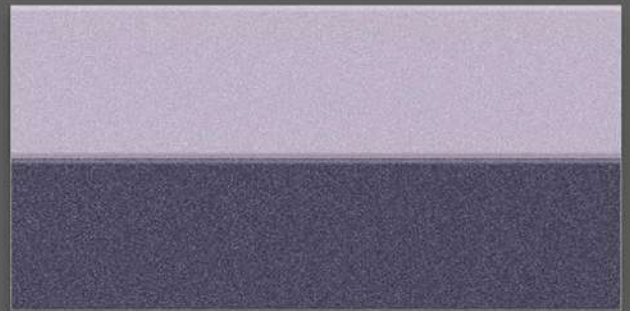
6048-LT-(Plain)



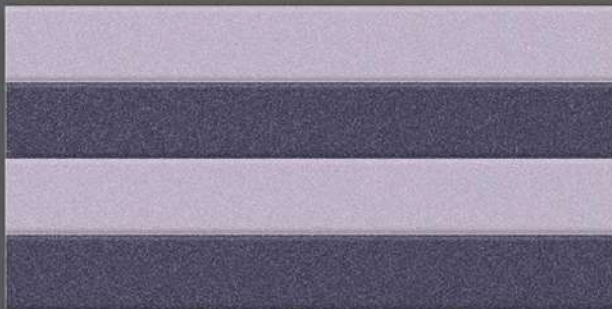
6048-LT2-(Punch)



6048-HL1-(Punch)



6048-HL2-(Punch)



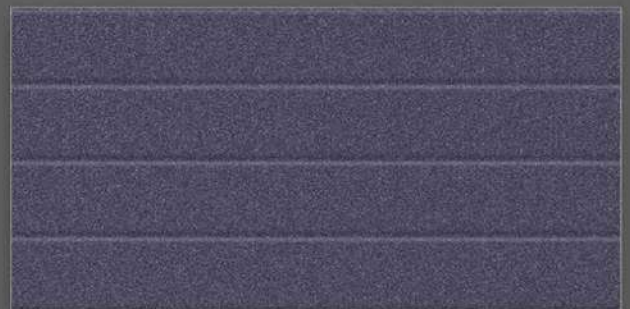
6048-HL1-(Punch)



6048-HL2-(Punch)



6048-DK-(Plain)

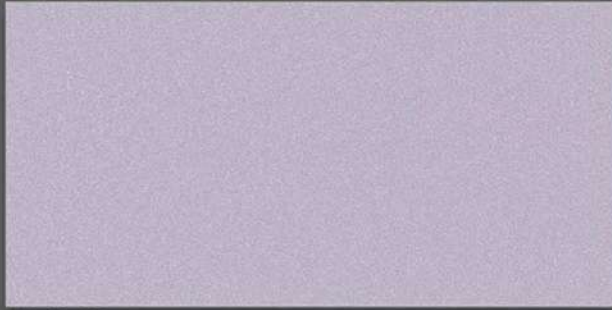


6048-DK2-(Punch)

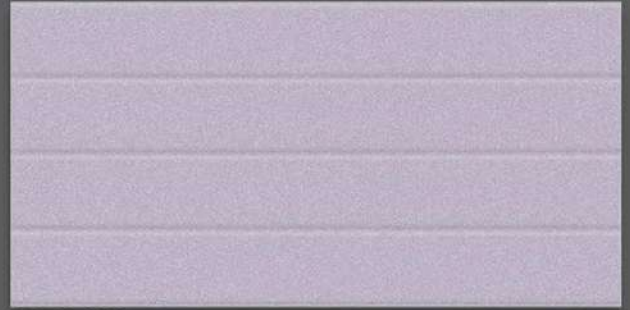
South-Matt-Series



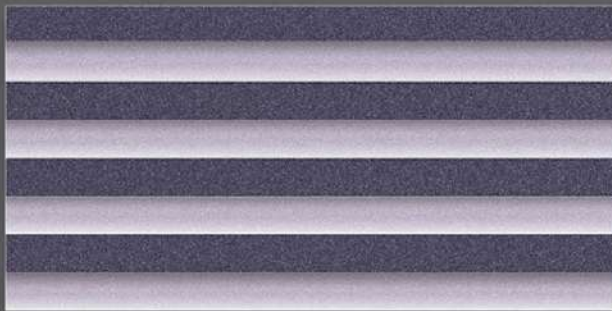
NOVAC
CERAMIC
Committed to Quality



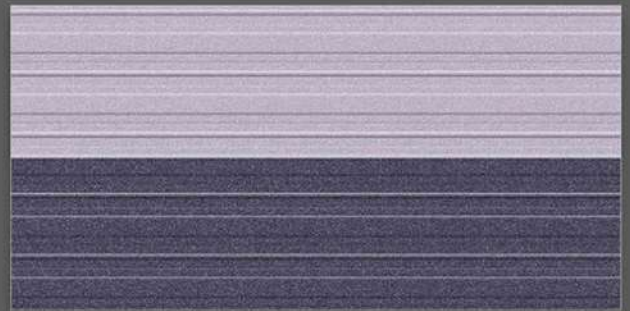
6048-LT-(Plain)



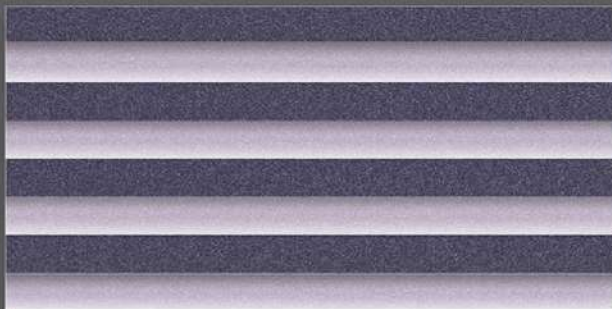
6048-LT2-(Punch)



6048-HL3-(Punch)



6048-HL4-(Punch)



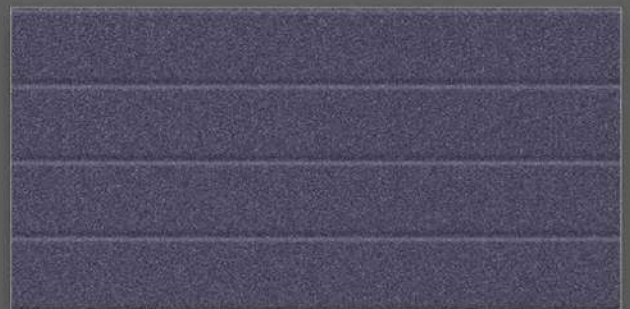
6048-HL3-(Punch)



6048-HL4-(Punch)



6048-DK-(Plain)

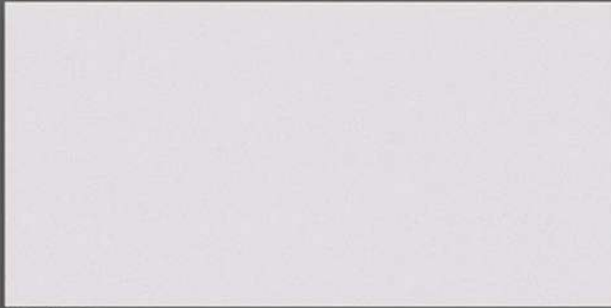


6048-DK2-(Punch)

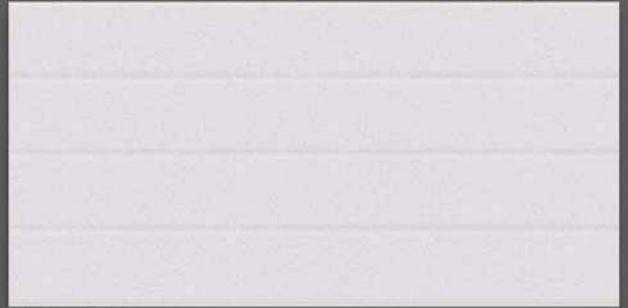
South-Matt-Series



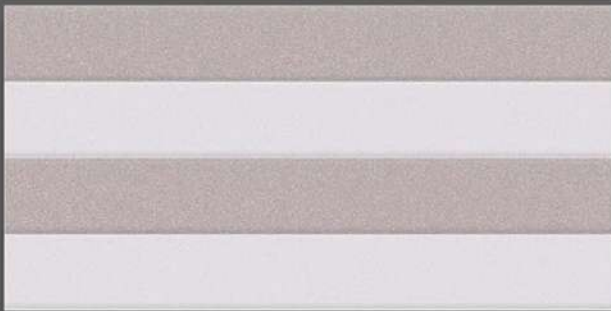
NOVAC
CERAMIC
Committed to Quality



6049-LT-(Plain)



6049-LT2-(Punch)



6049-HL1-(Punch)



6049-HL2-(Punch)



6049-HL1-(Punch)



6049-HL2-(Punch)



6049-DK-(Plain)

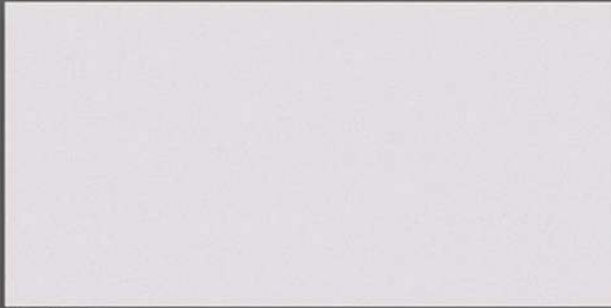


6049-DK2-(Punch)

South-Matt-Series



NOVAC
CERAMIC
Committed to Quality



6049-LT-(Plain)



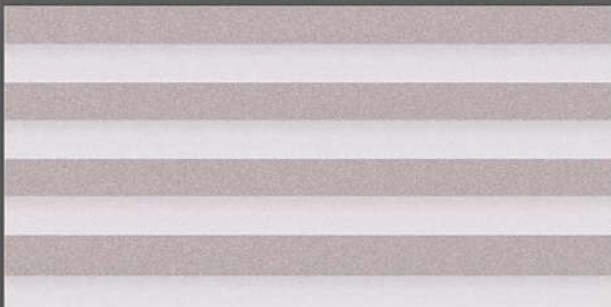
6049-LT2-(Punch)



6049-HL3-(Punch)



6049-HL4-(Punch)



6049-HL3-(Punch)



6049-HL4-(Punch)



6049-DK-(Plain)



6049-DK2-(Punch)

South-Matt-Series



NOVAC
CERAMIC
Committed to Quality



6050-LT-(Plain)



6050-LT2-(Punch)



6050-HL1-(Punch)



6050-HL2-(Punch)



6050-HL1-(Punch)



6050-HL2-(Punch)



6050-DK-(Plain)



6050-DK2-(Punch)

South-Matt-Series



NOVAC
CERAMIC
Committed to Quality



6050-LT-(Plain)



6050-LT2-(Punch)



6050-HL3-(Punch)



6050-HL4-(Punch)



6050-HL3-(Punch)



6050-HL4-(Punch)



6050-DK-(Plain)



6050-DK2-(Punch)

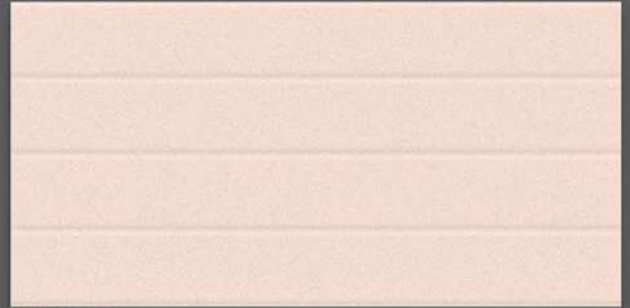
South-Matt-Series



NOVAC
CERAMIC
Committed to Quality



6051-LT-(Plain)



6051-LT2-(Punch)



6051-HL1-(Punch)



6051-HL2-(Punch)



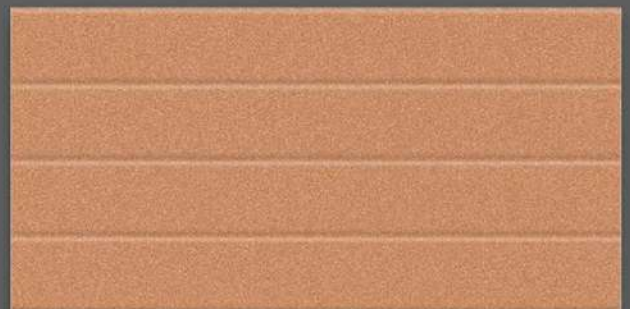
6051-HL1-(Punch)



6051-HL2-(Punch)



6051-DK-(Plain)

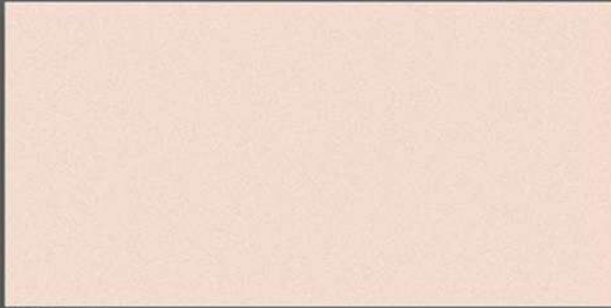


6051-DK2-(Punch)

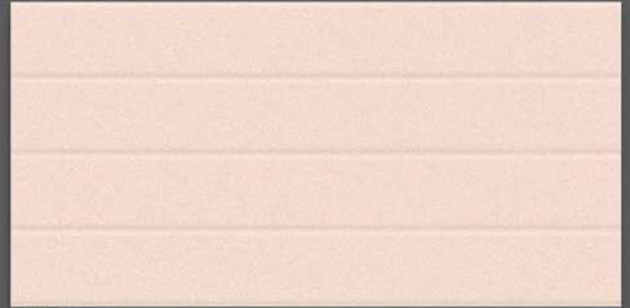
South-Matt-Series



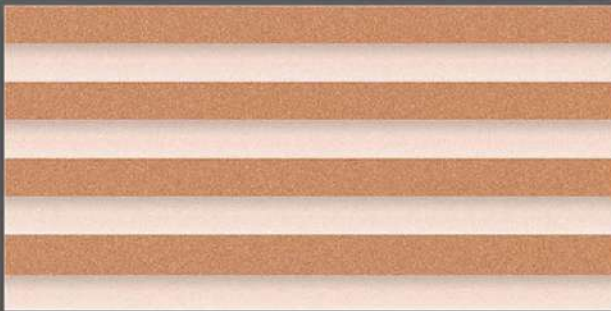
NOVAC
CERAMIC
Committed to Quality



6051-LT-(Plain)



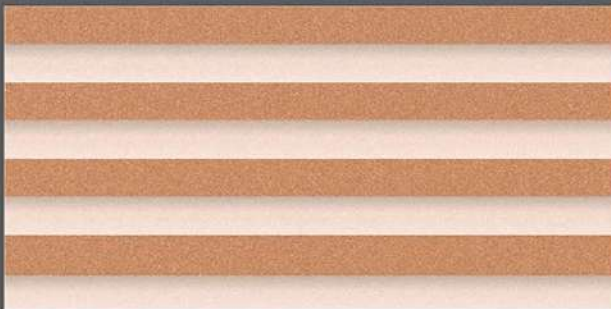
6051-LT2-(Punch)



6051-HL3-(Punch)



6051-HL4-(Punch)



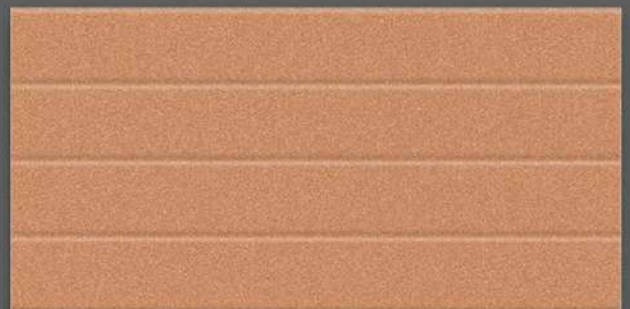
6051-HL3-(Punch)



6051-HL4-(Punch)



6051-DK-(Plain)

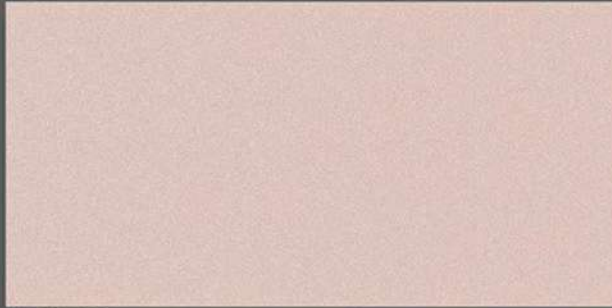


6051-DK2-(Punch)

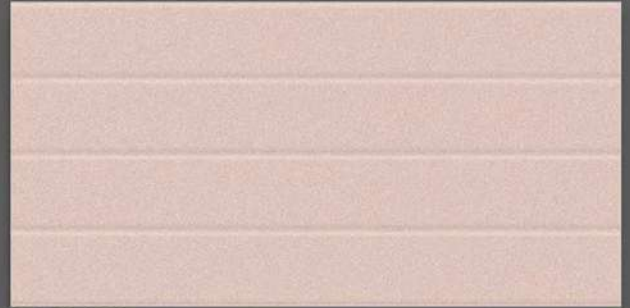
South-Matt-Series



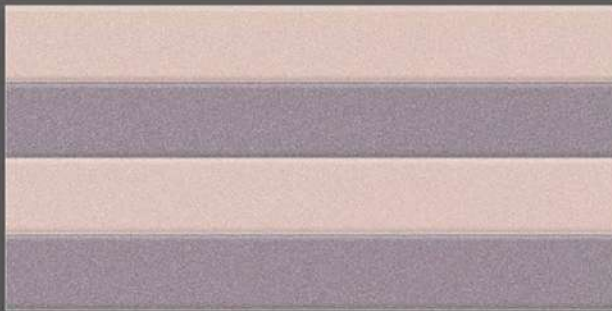
NOVAC
CERAMIC
Committed to Quality



6052-LT-(Plain)



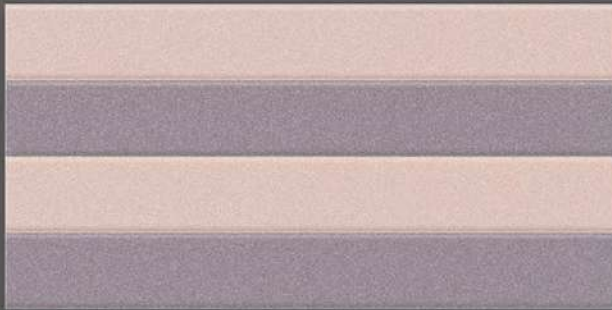
6052-LT2-(Punch)



6052-HL1-(Punch)



6052-HL2-(Punch)



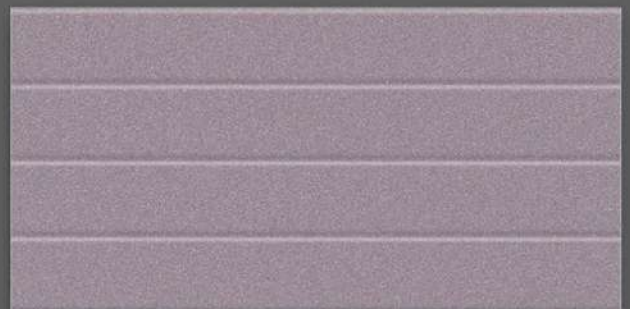
6052-HL1-(Punch)



6052-HL2-(Punch)



6052-DK-(Plain)



6052-DK2-(Punch)

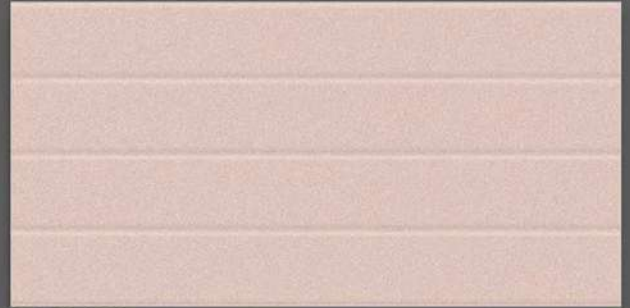
South-Matt-Series



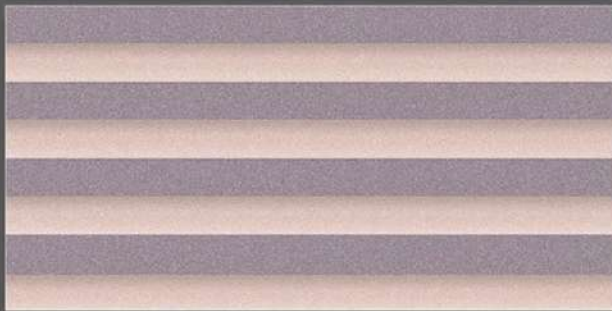
NOVAC
CERAMIC
Committed to Quality



6052-LT-(Plain)



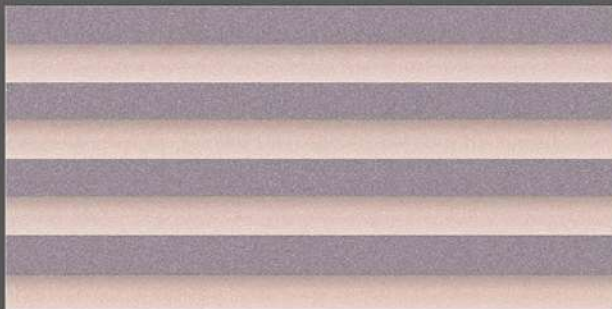
6052-LT2-(Punch)



6052-HL3-(Punch)



6052-HL4-(Punch)



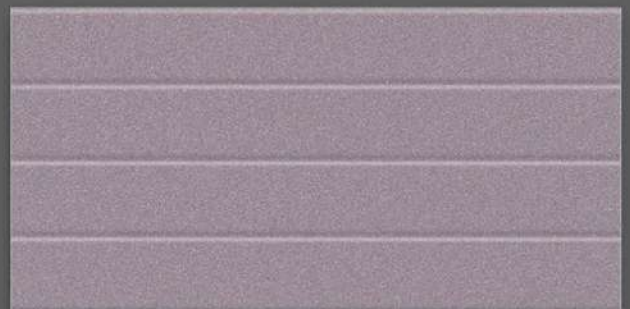
6052-HL3-(Punch)



6052-HL4-(Punch)



6052-DK-(Plain)

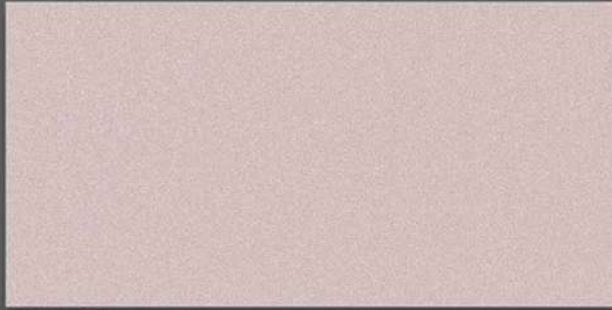


6052-DK2-(Punch)

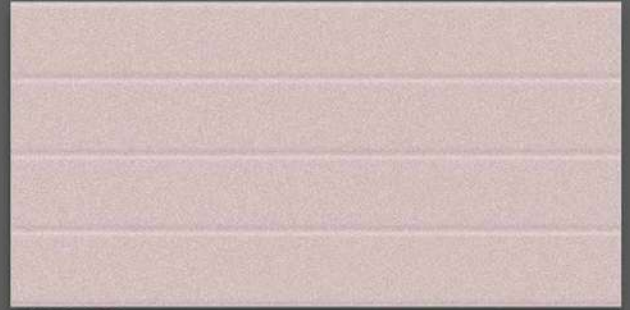
South-Matt-Series



NOVAC
CERAMIC
Committed to Quality



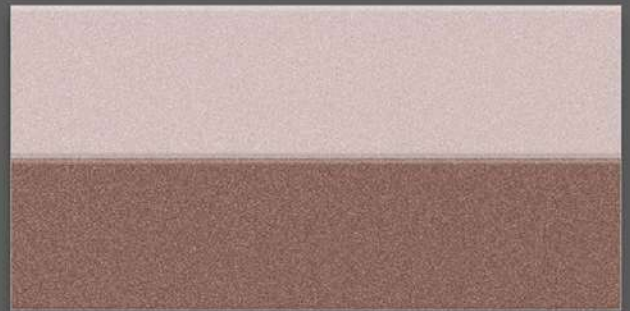
6053-LT-(Plain)



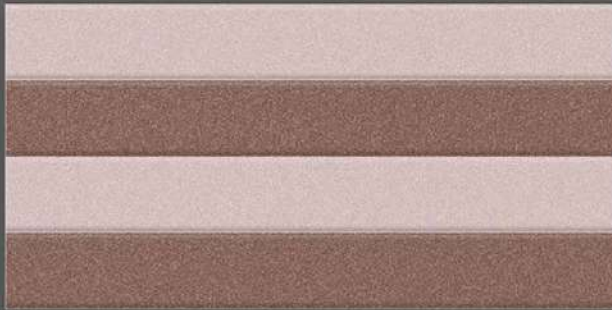
6053-LT2-(Punch)



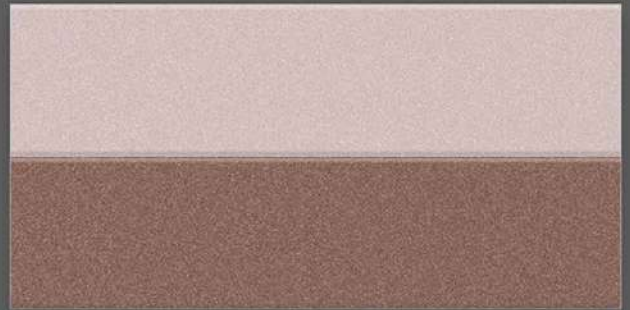
6053-HL1-(Punch)



6053-HL2-(Punch)



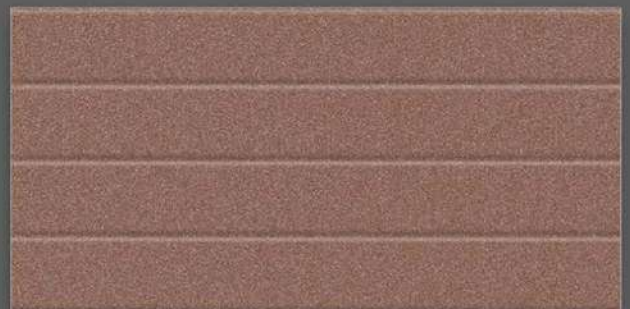
6053-HL1-(Punch)



6053-HL2-(Punch)



6053-DK-(Plain)



6053-DK2-(Punch)

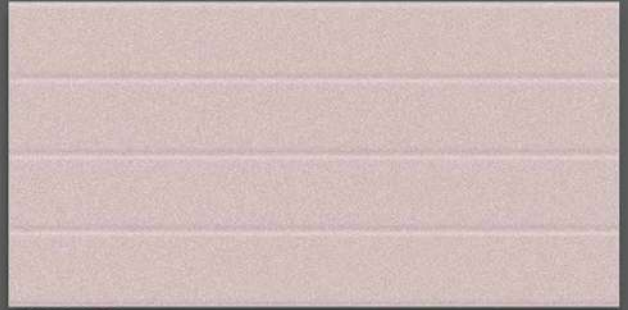
South-Matt-Series



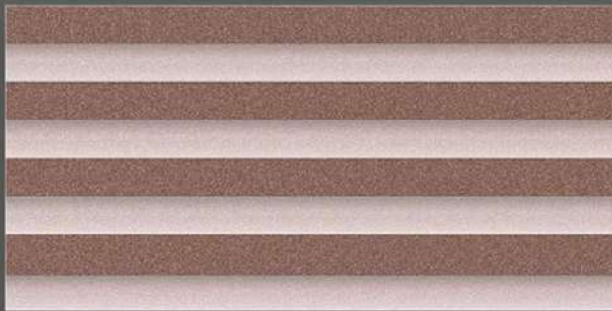
NOVAC
CERAMIC
Committed to Quality



6053-LT-(Plain)



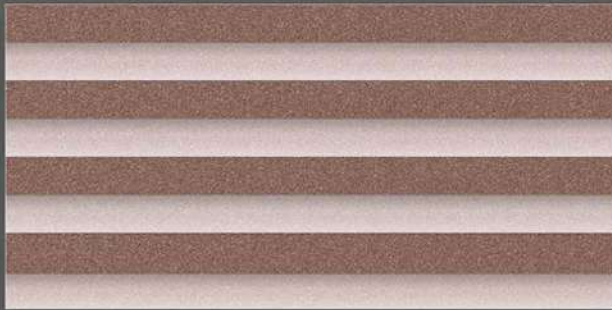
6053-LT2-(Punch)



6053-HL3-(Punch)



6053-HL4-(Punch)



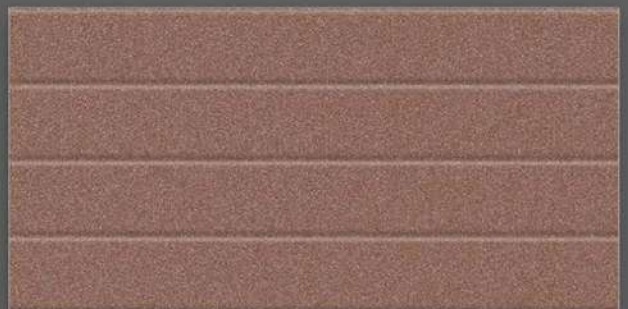
6053-HL3-(Punch)



6053-HL4-(Punch)



6053-DK-(Plain)



6053-DK2-(Punch)

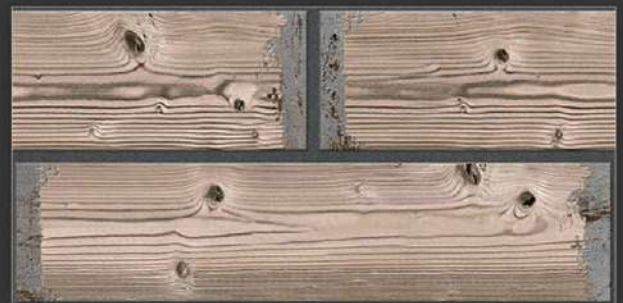
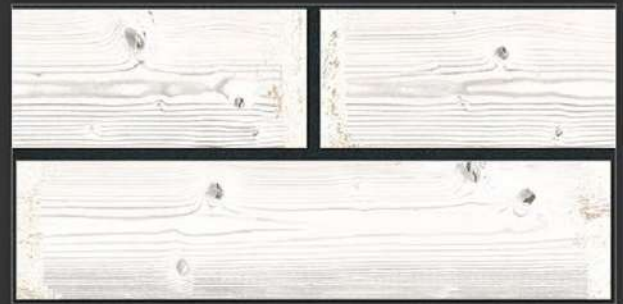
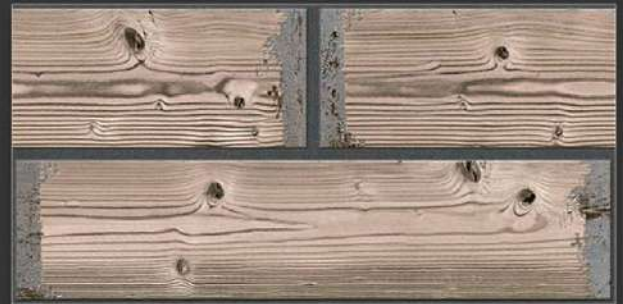
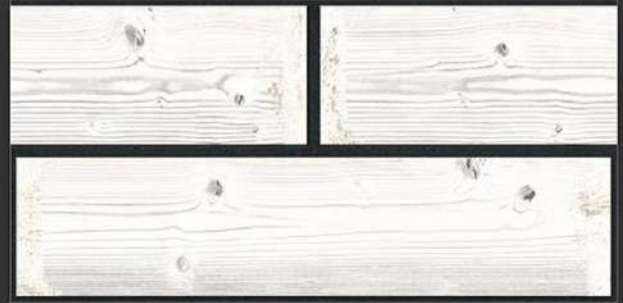
A photograph of a highly ornate, multi-story wooden structure, possibly a well or a palace interior, with intricate carvings and balconies. The structure is dark brown and set against a lighter background.

MATT WOODEN SERIES



Company makes emphasis on quality measures themost. The total quilty management principles the constant practice of improving in technology and manpower knowledge helps company to improve quilty on regular basis.

MATT SERIES



8001_LT-(Punch/continue)
8001_DK-(Punch/continue)

8002_LT-(Punch/continue)
8002_DK-(Punch/continue)

MATT SERIES



NOVAC
CERAMIC
Committed to Quality



8003_DK-(Punch/Random)



8004_DK-(Punch/(continue))

MATT SERIES



8005_LT-(Random)
8005_DK-(Random)

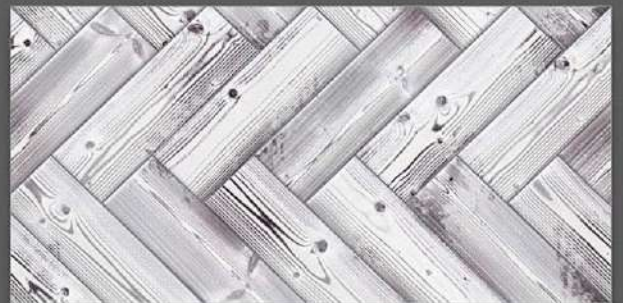
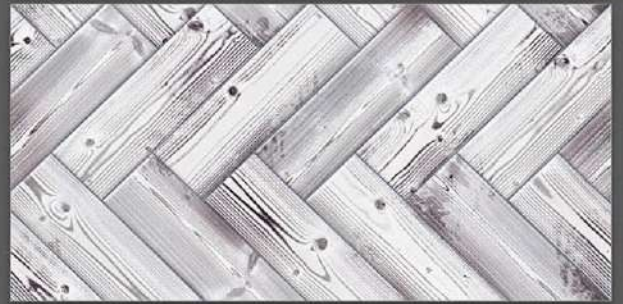
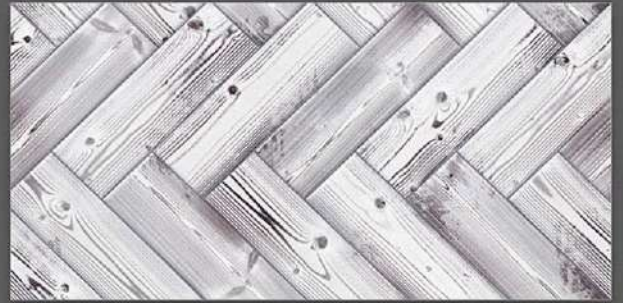
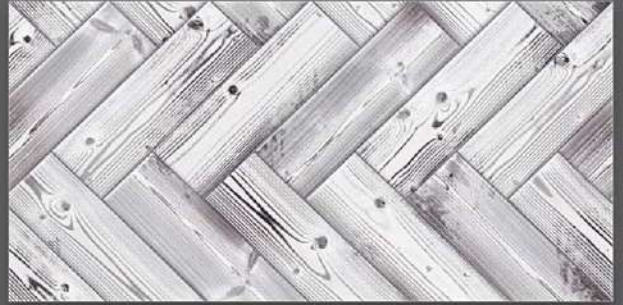


8009_LT-(Punch/continue)
8009_DK-(Punch/continue)

MATT SERIES



8010_LT-(Punch/continue)
8010_DK-(Punch/continue)

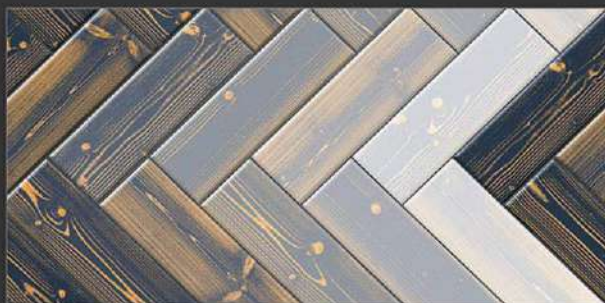
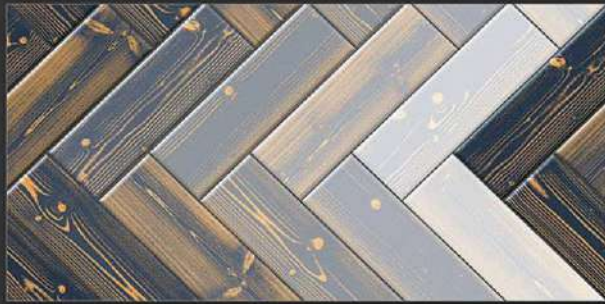
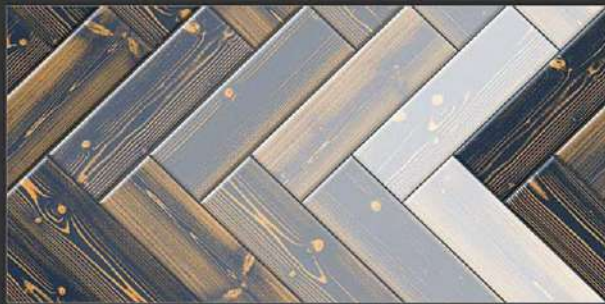
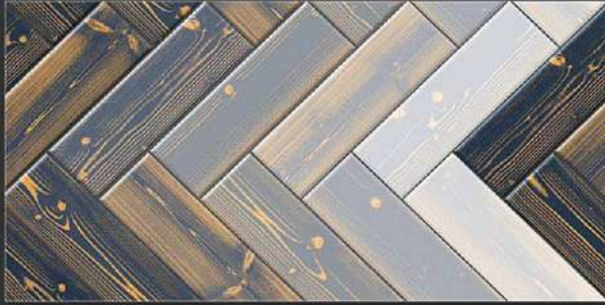


8011_DK-(Plain/continue)

MATT SERIES



NOVAC
CERAMIC
Committed to Quality



8012_DK-(Plain/continue)

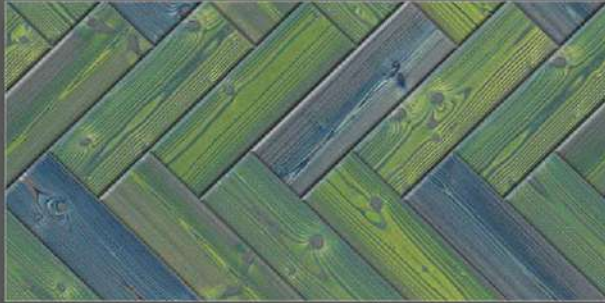


8013_DK-(Punch/continue)

MATT SERIES



NOVAC
CERAMIC
Committed to Quality



8014_DK-(Plain/continue)



8015_DK-(Punch/continue)

MATT SERIES



NOVAC
CERAMIC
Committed to Quality



8016_DK-(Punch/continue)



8017_LT-(Punch/Random)

8017_HL1-(Punch)

8017_DK-(Punch/Random)

MATT SERIES



8018_LT-(Random)
8018_HL1-(Punch)
8018_DK-(Random)



8021_LT-(Punch/Random)
8021_DK-(Punch/Random)

MATT SERIES

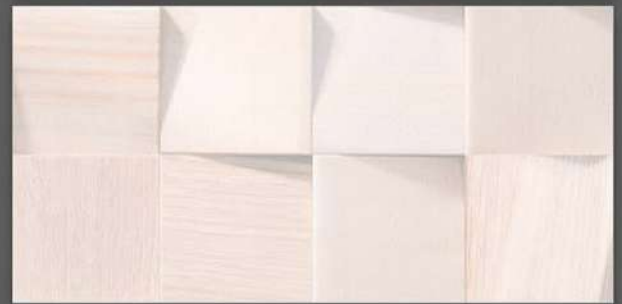
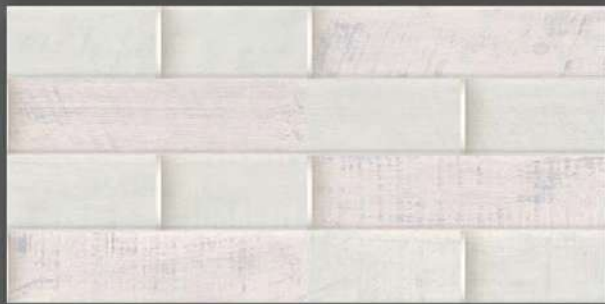
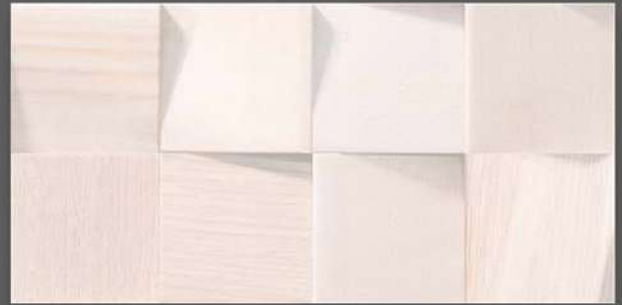
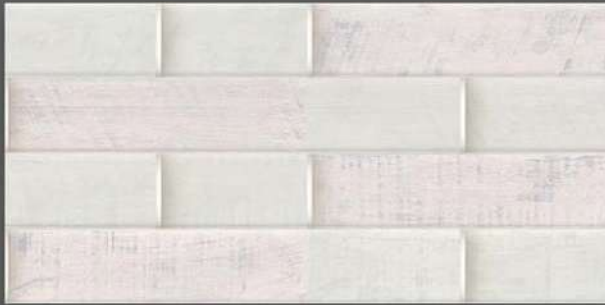


8023_LT-(Punch/continue)
8023_DK-(Punch/continue)



8024_LT-(Punch)
8024_DK-(Punch)

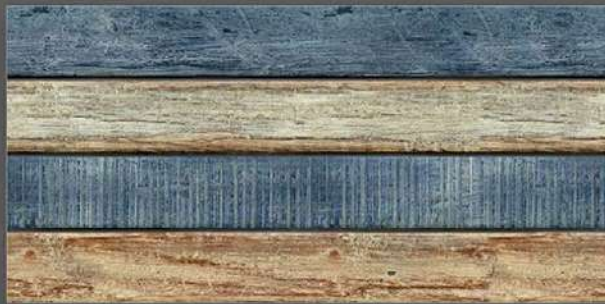
MATT SERIES



8025_LT-(Punch/continue)
8025_DK-(Punch/continue)

8030_LT-(Punch/continue)
8030_DK-(Punch/continue)

MATT SERIES



8032_LT-(Punch/continue)
8032_DK-(Punch/continue)



8034_LT-(Random)
8034_HL1-(Punch)
8034_DK-(Random)

MATT SERIES



8035_LT-(Punch/Random)
8035_DK-(Punch/Random)



8036_LT-(Punch/Random)
8036_DK-(Punch/Random)

MATT SERIES



8042_DK-(Plain/continue)



8043_LT-(Punch/continue)

8043_DK-(Punch/continue)

MATT SERIES



8045_LT-(Punch)
8045_HL1-(Punch)
8045_DK-(Punch)



8045_LT-(Punch)
8045_HL1-(Punch)
8045_DK-(Punch)



NOVAC CERAMIC LLP

At: Lalpar, Real Plaza - 1, Near Omkar Petroleum,
8-A, National Highway, Morbi - 363 642.

Cell: +91 97251 20510

www.novacceramic.com | info@novacceramic.com