

**1000-Series-(Glossy)**



A  
**MODERN**  
TOUCH



A photograph of an ornate, multi-story architectural interior, possibly a palace or a historical building, with intricate carvings and arches. The lighting is dramatic, highlighting the details of the structure.

Glossy

# NATURAL

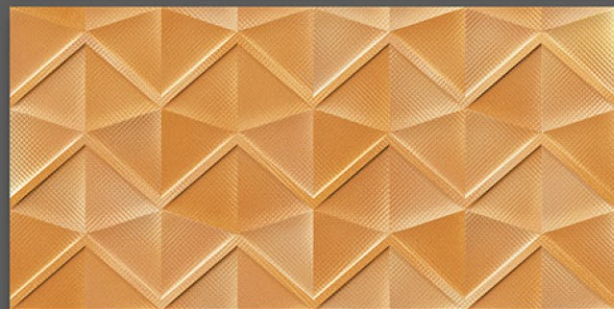
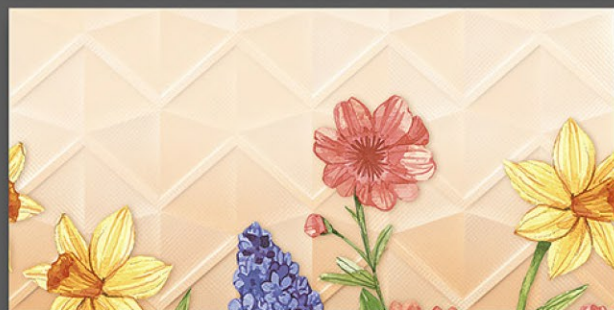
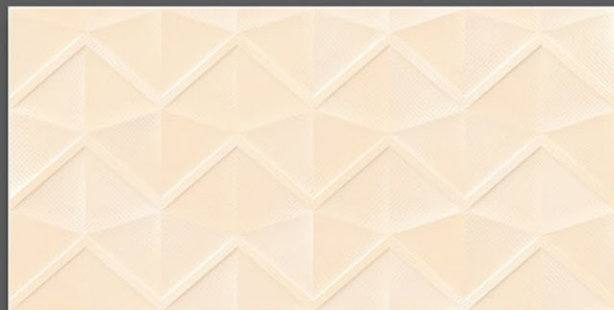
S E R I E S



Company makes emphasis on quality measures themost. The total quilty management principles the constant practice of improving in technology and manpower knowledge helps company to improve quilty on regular basis.



# GLOSSY SERIES



3017\_LT-(Punch/continue)  
3017\_HL1-AB-(Punch/continue)  
3017\_DK-(Punch/continue)

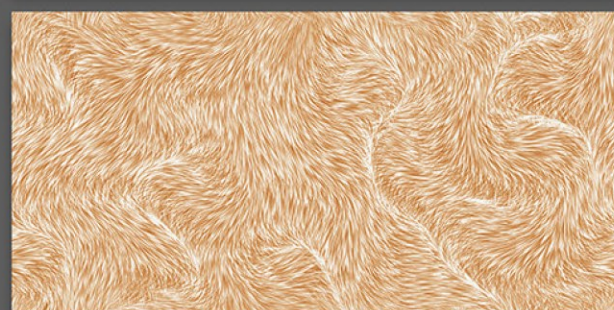
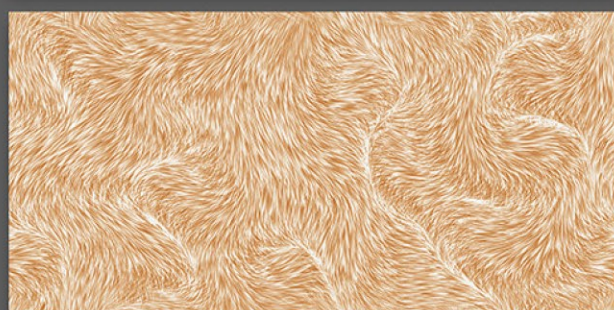
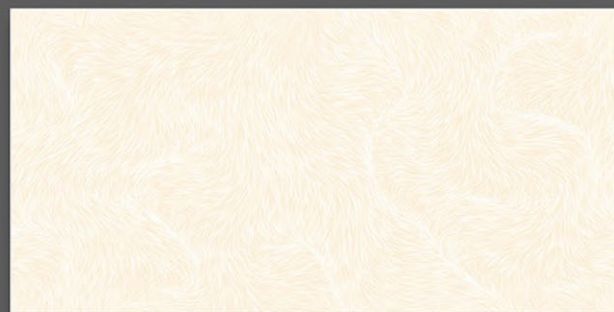
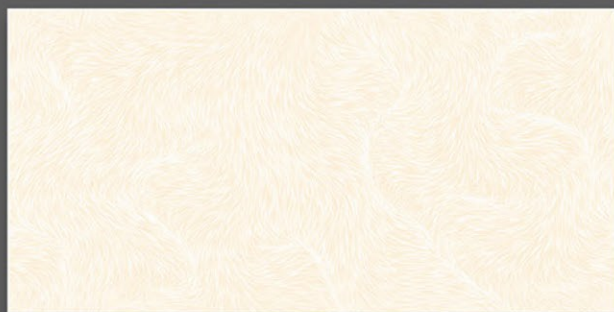
3017\_LT-(Punch/continue)  
3017\_HL2-AB-(Punch/continue)  
3017\_DK-(Punch/continue)





**NOVAC**  
CERAMIC  
Committed to Quality

# GLOSSY SERIES



3018\_LT-(Plain/continue)  
3018\_HL1-AB-(Plain/continue)  
3018\_DK-(Plain/continue)

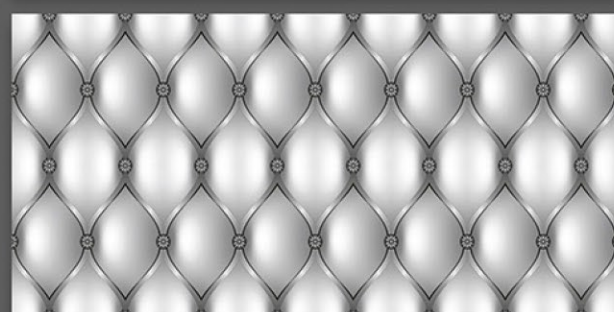
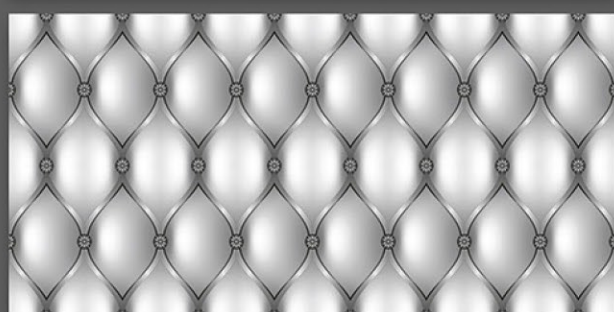
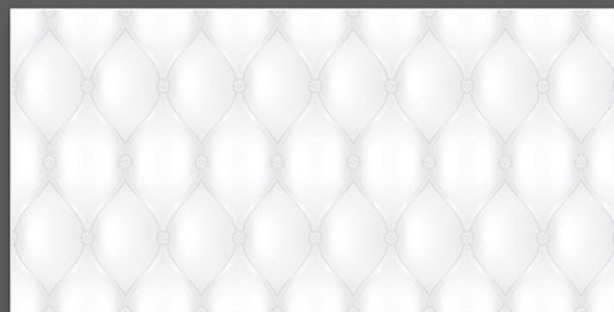
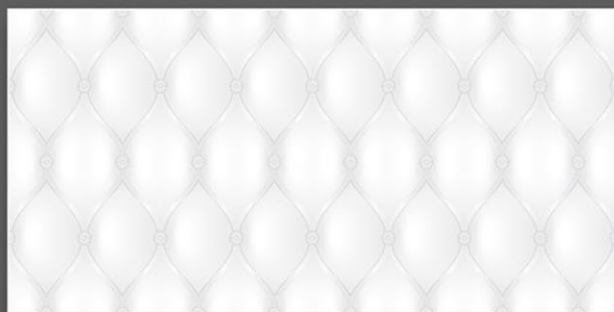
3018\_LT-(Plain/continue)  
3018\_HL1-AB-(Plain/continue)  
3018\_DK-(Plain/continue)



# GLOSSY SERIES



**NOVAC**  
CERAMIC  
Committed to Quality



3019\_LT-(Plain/continue)

3019\_HL1-AB-(Plain/continue)

3019\_DK-(Plain/continue)

3019\_LT-(Plain/continue)

3019\_HL2-AB-(Plain/continue)

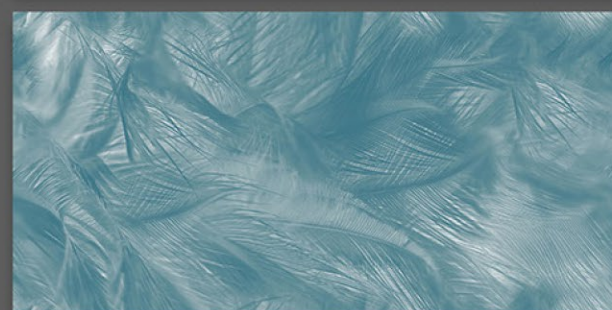
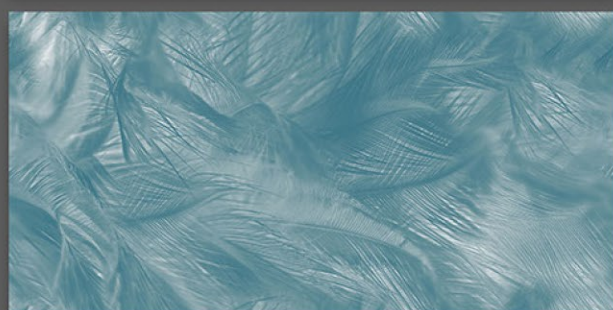
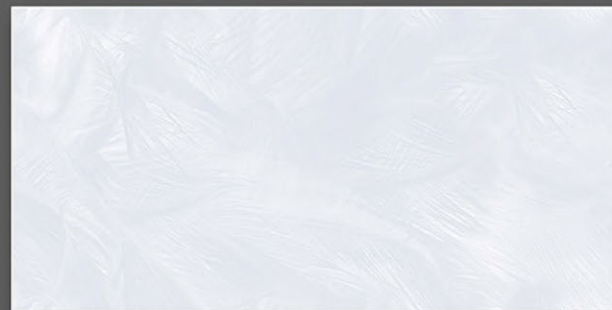
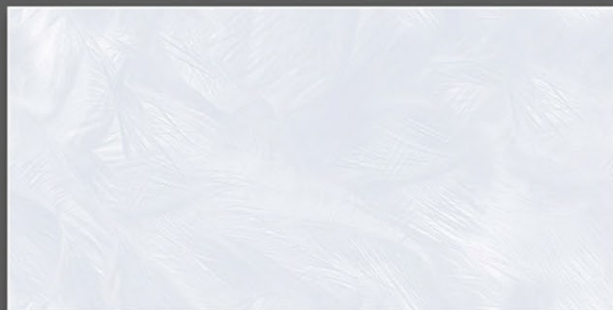
3019\_DK-(Plain/continue)



# GLOSSY SERIES



**NOVAC**  
CERAMIC  
Committed to Quality



3020\_LT-(Plain/continue)  
3020\_HL1-AB-(Plain/continue)  
3020\_DK-(Plain/continue)

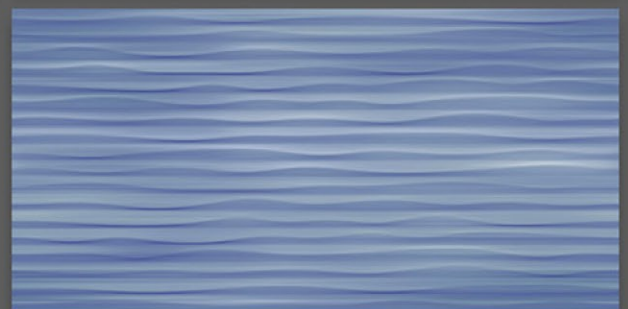
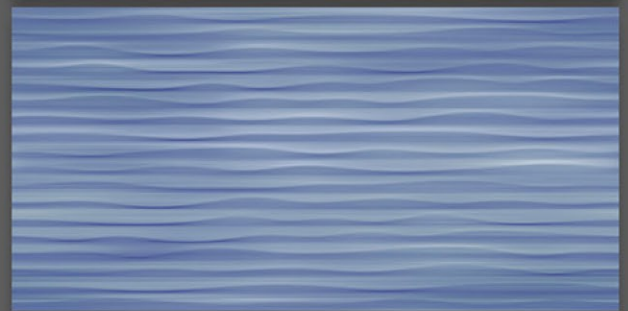
3020\_LT-(Plain/continue)  
3020\_HL1-AB-(Plain/continue)  
3020\_DK-(Plain/continue)



# GLOSSY SERIES



**NOVAC**  
CERAMIC  
Committed to Quality



3021\_LT-(Punch/continue)  
3021\_HL1-ABC-(Punch/continue)

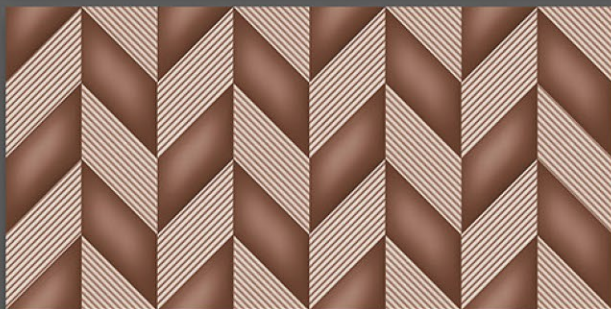
3021\_LT-(Punch/continue)  
3021\_DK-(Punch/continue)





**NOVAC**  
CERAMIC  
Committed to Quality

# GLOSSY SERIES



3022\_LT-(Punch/continue)  
3022\_HL1-AB-(Punch/continue)  
3022\_DK-(Punch/continue)

3022\_LT-(Punch/continue)  
3022\_HL1-AB-(Punch/continue)  
3022\_DK-(Punch/continue)



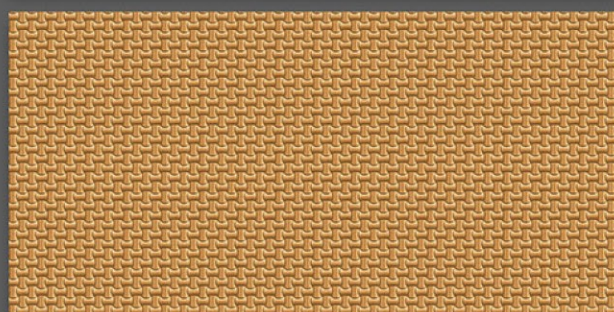
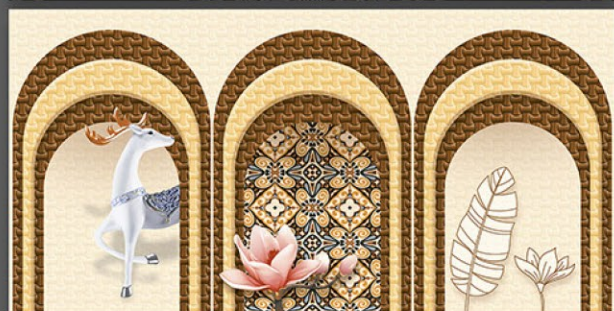
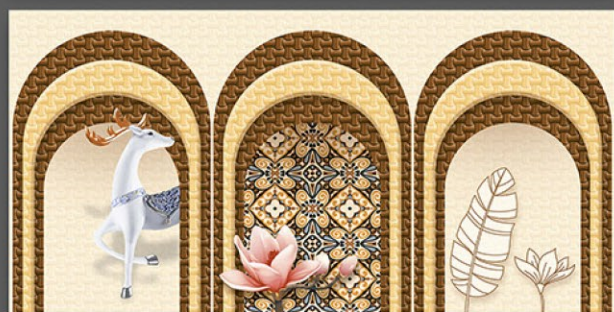
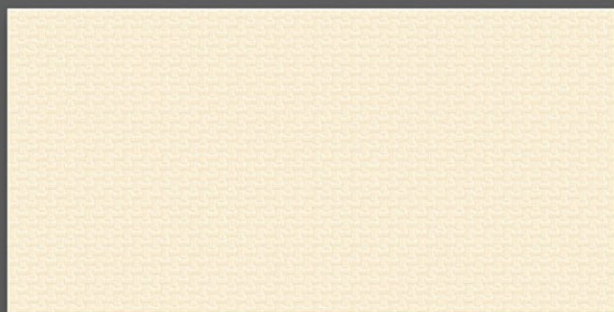


**NOVAC**

CERAMIC

Committed to Quality

# GLOSSY SERIES



- 3023\_LT-(Plain/continue)
- 3023\_HL1-(Plain/continue)
- 3023\_DK-(Plain/continue)



3023\_Poster-ABCD-(Plain/continue)



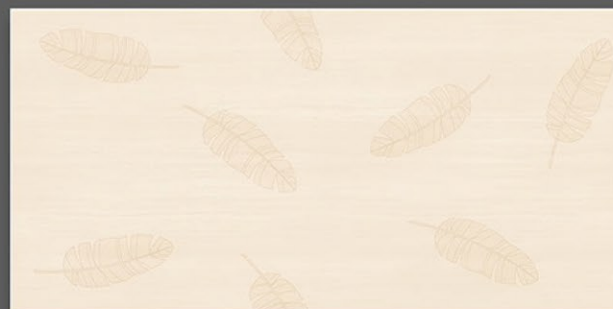


**NOVAC**

CERAMIC

Committed to Quality

# GLOSSY SERIES

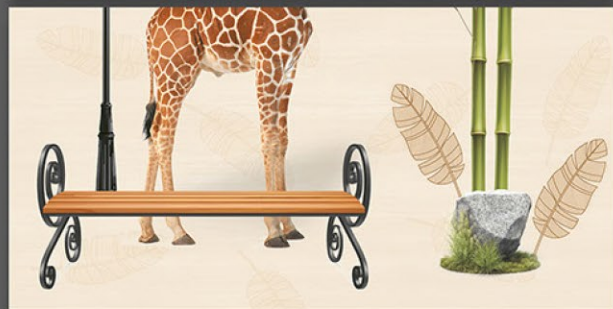


3024\_LT-(Plain/continue)  
3024\_HL1-(Plain/continue)  
3024\_DK-(Plain/continue)

3024\_LT-(Plain/continue)  
3024\_HL1-(Plain/continue)  
3024\_DK-(Plain/continue)



# GLOSSY SERIES



3024\_LT-(Plain/continue)

3024\_Poster-AC-(Plain/continue)

3024\_DK-(Plain/continue)

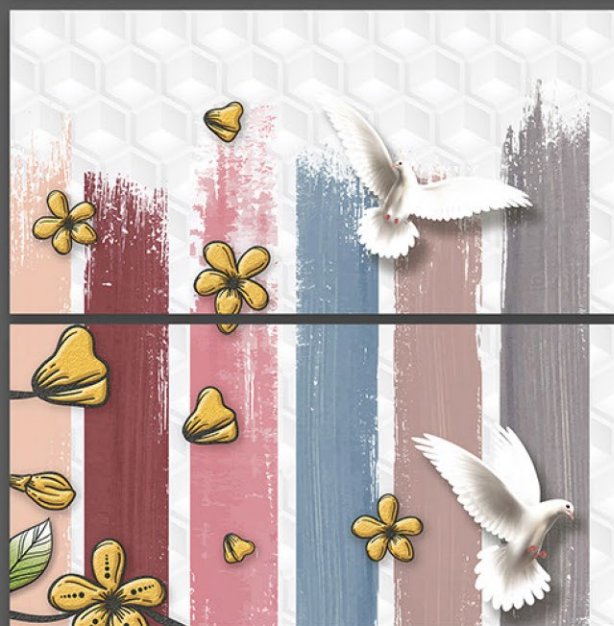
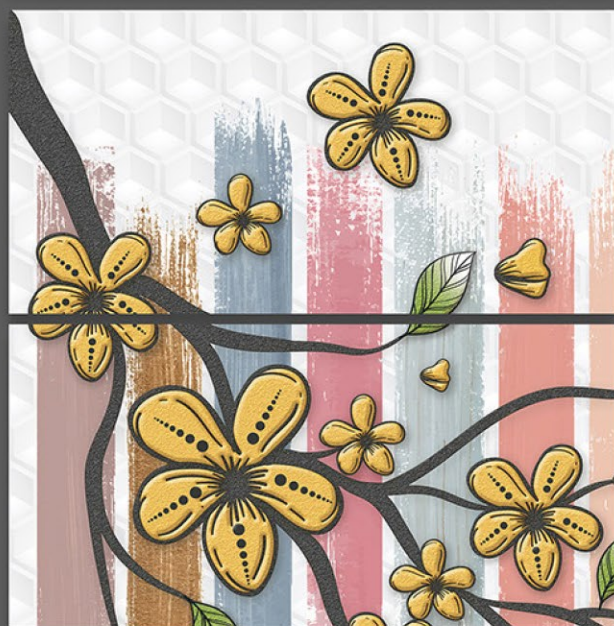
3024\_LT-(Plain/continue)

3024\_Poster-BD-(Plain/continue)

3024\_DK-(Plain/continue)



# GLOSSY SERIES



3025\_LT-(Plain/continue)  
3025\_Poster-ACE-(Plain/continue)

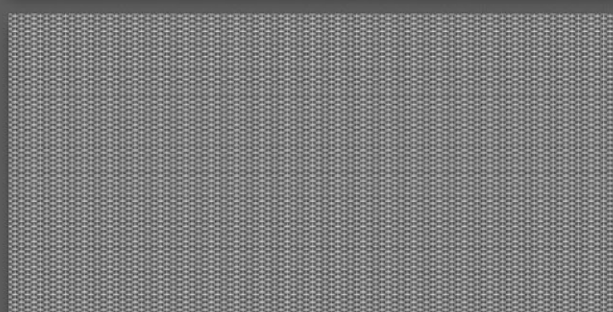
3025\_HL1-(Plain/continue)  
3025\_Poster-BDF-(Plain/continue)



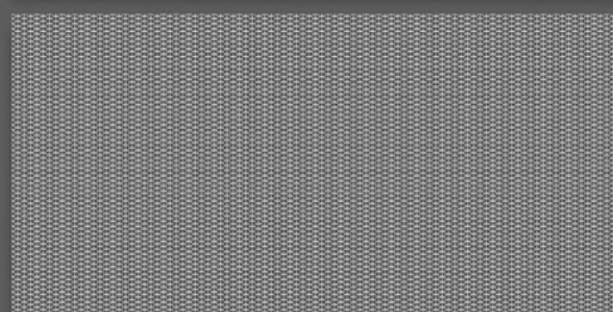
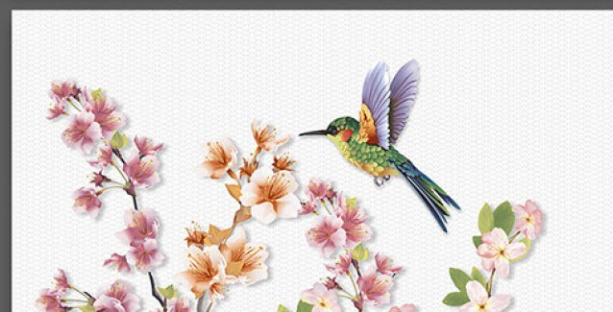
# GLOSSY SERIES



**NOVAC**  
CERAMIC  
Committed to Quality



3026\_LT-(Plain/continue)  
3026\_HL1-AB-(Plain/continue)  
3026\_DK-(Plain/continue)



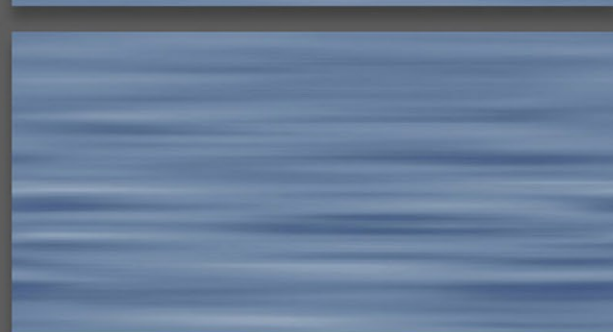
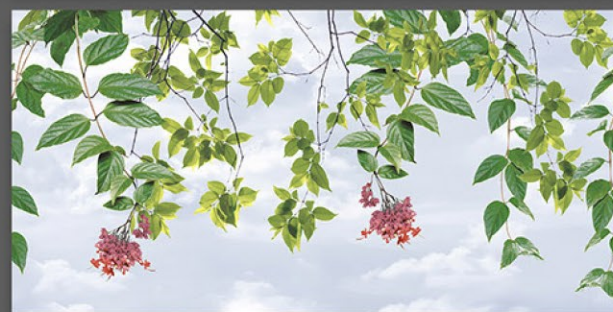
3026\_LT-(Plain/continue)  
3026\_HL2-AB-(Plain/continue)  
3026\_DK-(Plain/continue)



# GLOSSY SERIES



**NOVAC**  
CERAMIC  
Committed to Quality



3027\_LT-(Plain/continue)  
3027\_HL1-AB-(Plain/continue)  
3027\_DK-(Plain/continue)

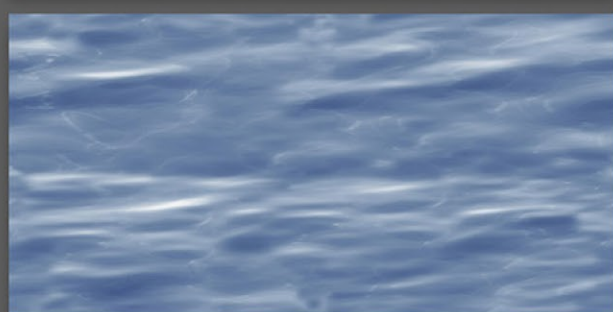
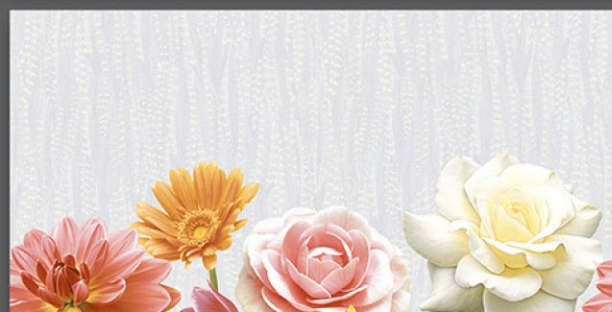
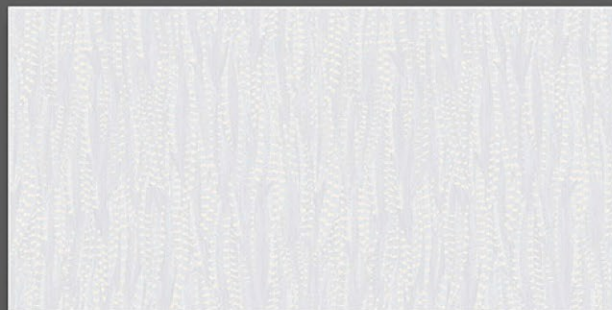
3027\_LT-(Plain/continue)  
3028\_HL1-AB-(Plain/continue)  
3028\_DK-(Plain/continue)



# GLOSSY SERIES



**NOVAC**  
CERAMIC  
Committed to Quality



3027\_LT-(Plain/continue)

3029\_HL1-AB-(Plain/continue)

3029\_DK-(Plain/continue)

3030\_LT-(Plain/continue)

3030\_HL1-AB-(Plain/continue)

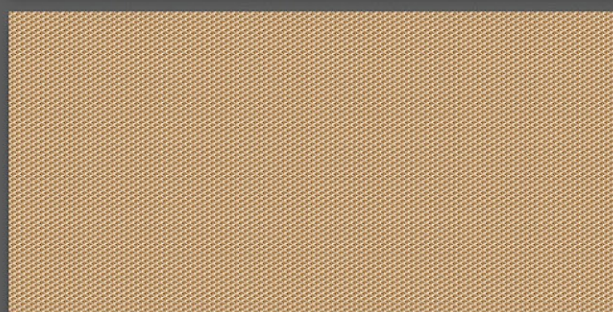
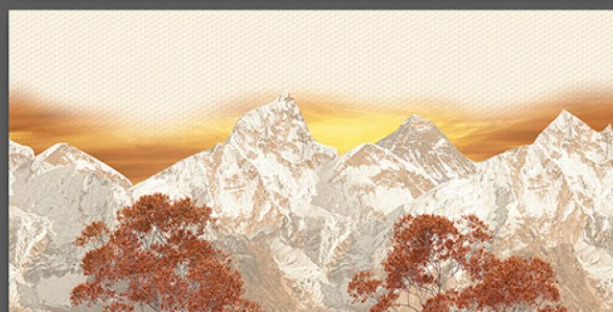
3030\_DK-(Plain/continue)



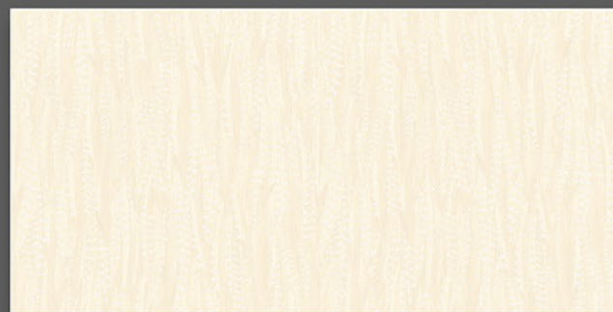
# GLOSSY SERIES



**NOVAC**  
CERAMIC  
Committed to Quality



3031\_LT-(Plain/continue)  
3031\_HL1-AB-(Plain/continue)  
3031\_DK-(Plain/continue)



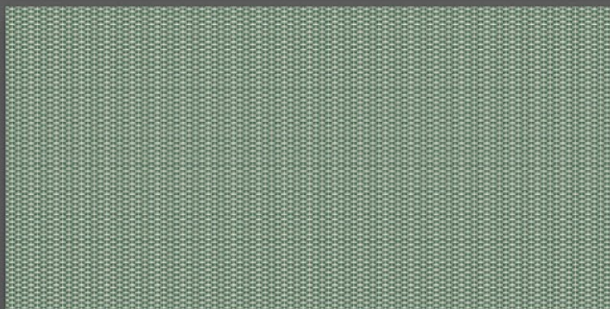
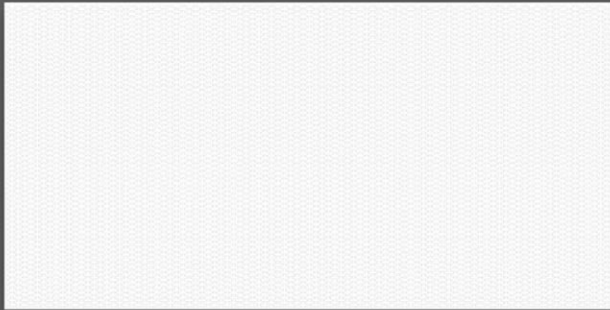
3032\_LT-(Plain/continue)  
3032\_HL1-AB-(Plain/continue)  
3032\_DK-(Plain/continue)



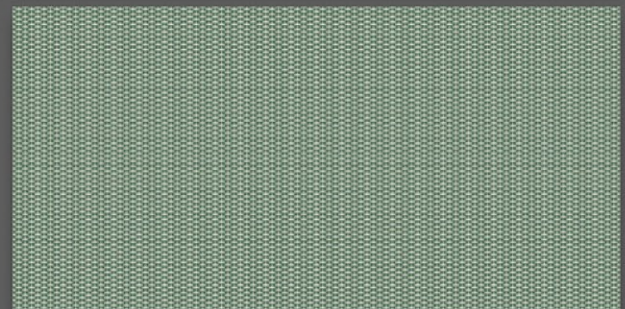
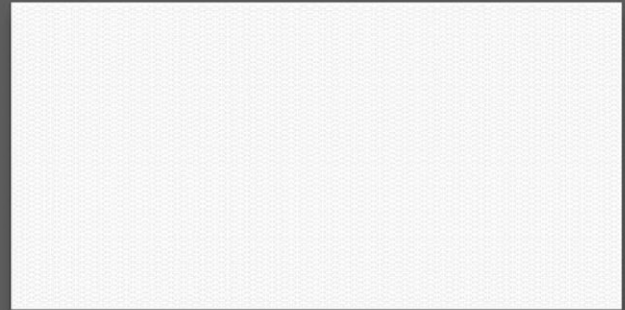


**NOVAC**  
CERAMIC  
Committed to Quality

# GLOSSY SERIES



3033\_LT-(Plain/continue)  
3033\_HL1-AB-(Plain/continue)  
3033\_DK-(Plain/continue)



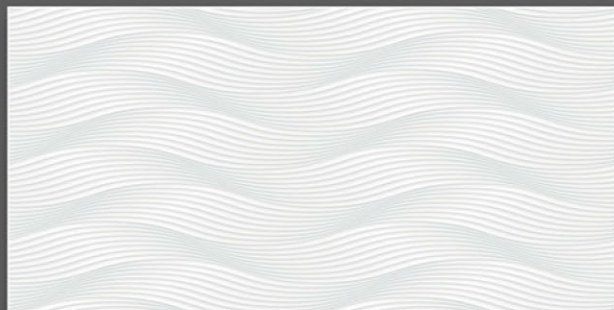
3033\_LT-(Plain/continue)  
3033\_HL2-AB-(Plain/continue)  
3033\_DK-(Plain/continue)



# GLOSSY SERIES



**NOVAC**  
CERAMIC  
Committed to Quality



3034\_LT-(Plain/continue)

3034\_HL1-AB-(Plain/continue)

3034\_DK-(Plain/continue)

3027\_LT-(Plain/continue)

3035\_HL1-AB-(Plain/continue)

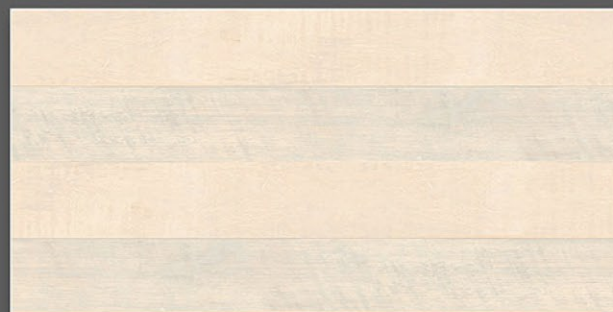
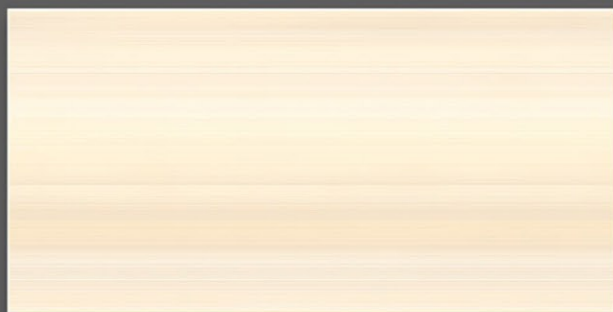
3035\_DK-(Plain/continue)



# GLOSSY SERIES



**NOVAC**  
CERAMIC  
Committed to Quality



3036\_LT-(Plain/continue)  
3036\_HL1-AB-(Plain/continue)  
3036\_DK-(Plain/continue)

3037\_LT-(Plain/continue)  
3037\_HL1-AB-(Plain/continue)  
3037\_DK-(Plain/continue)



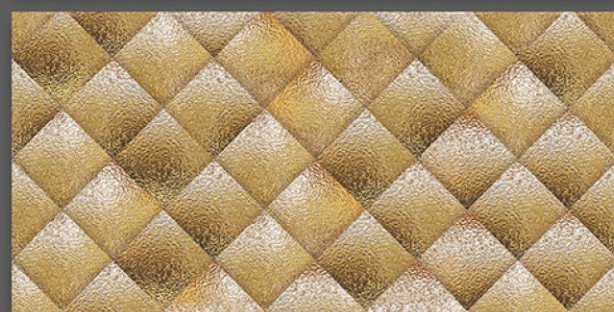
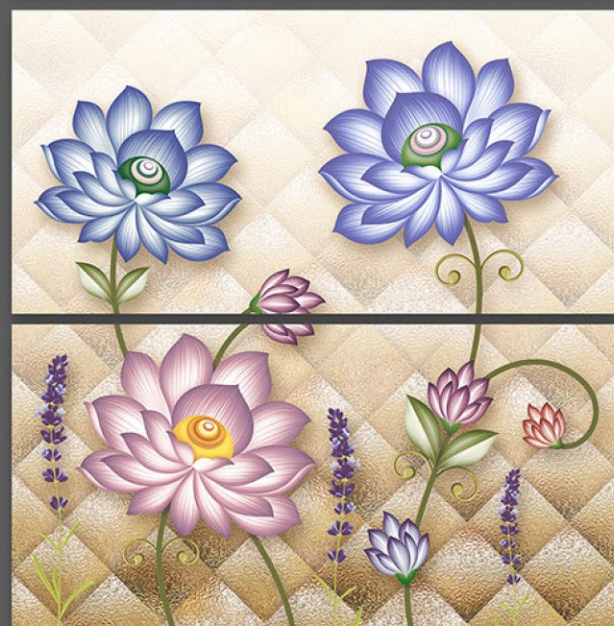
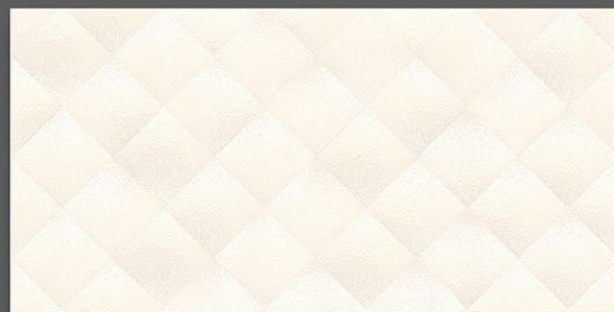


**NOVAC**  
CERAMIC  
Committed to Quality

# GLOSSY SERIES



3038\_LT-(Plain/continue)  
3038\_HL1-AB-(Plain/continue)  
3038\_DK-(Plain/continue)



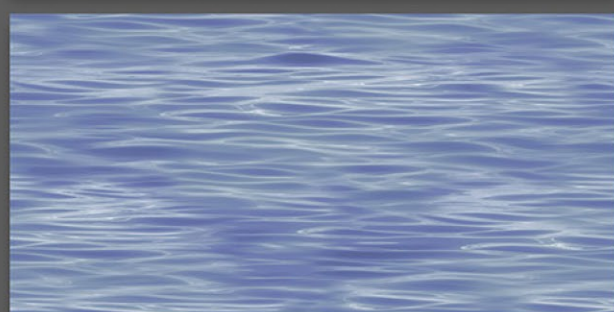
3039\_LT-(Plain/continue)  
3039\_HL1-AB-(Plain/continue)  
3039\_DK-(Plain/continue)



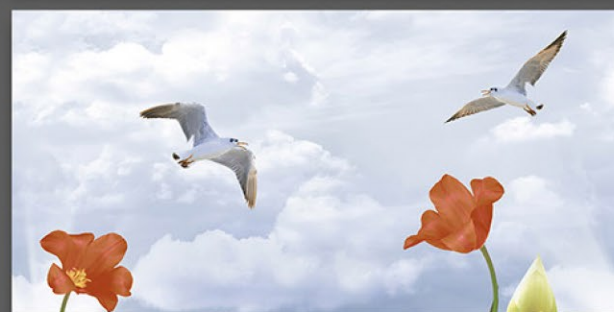


**NOVAC**  
CERAMIC  
Committed to Quality

# GLOSSY SERIES



3027\_LT-(Plain/continue)  
3040\_HL1-AB-(Plain/continue)  
3040\_DK-(Plain/continue)



3027\_LT-(Plain/continue)  
3041\_HL1-AB-(Plain/continue)  
3041\_DK-(Plain/continue)



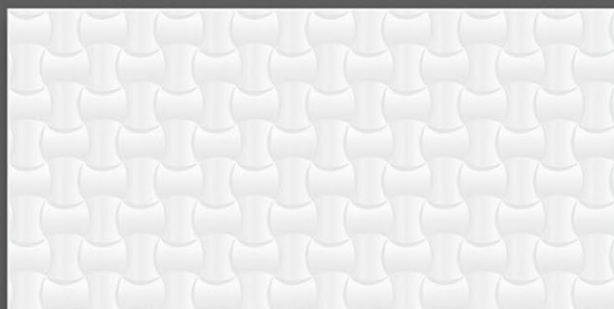


**NOVAC**

CERAMIC

Committed to Quality

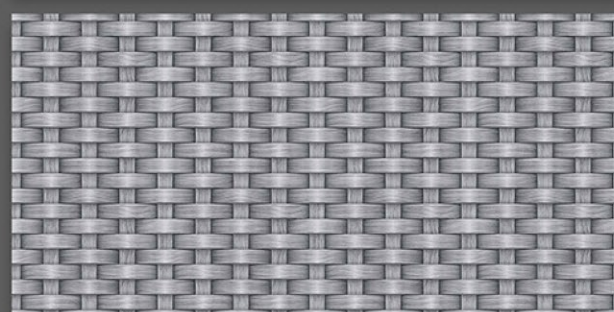
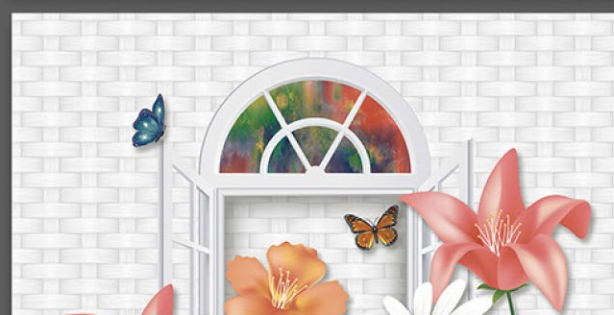
# GLOSSY SERIES



3042\_LT-(Plain/continue)

3042\_HL1-AB-(Plain/continue)

3042\_DK-(Plain/continue)



3043\_LT-(Plain/continue)

3043\_HL1-AB-(Plain/continue)

3043\_DK-(Plain/continue)





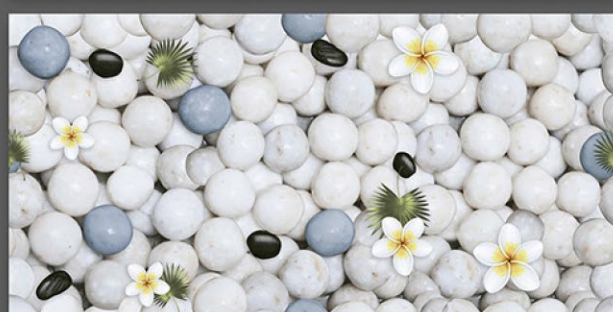
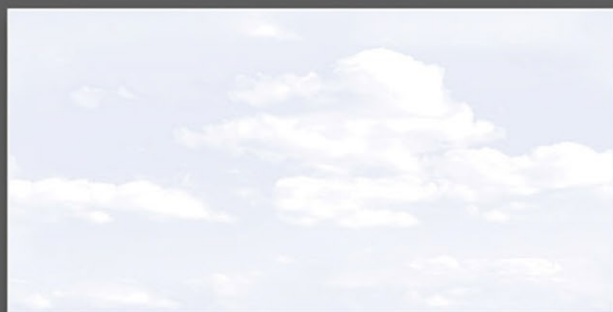
Company makes emphasis on quality measures themost. The total quilty management principles the constant practice of improving in technology and manpower knowledge helps company to improve quilty on regular basis.





**NOVAC**  
CERAMIC  
Committed to Quality

**GLOSSY SERIES**



9001\_LT-(continue)  
9001\_HL1-(Plain)  
9001\_DK-(continue)

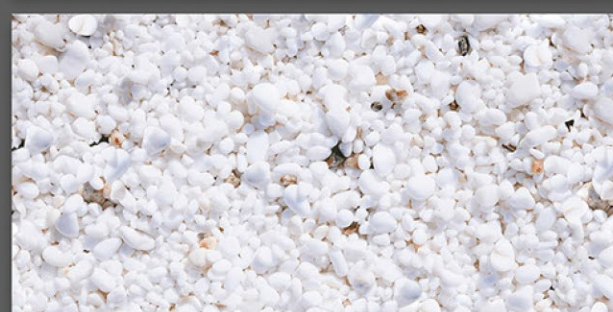
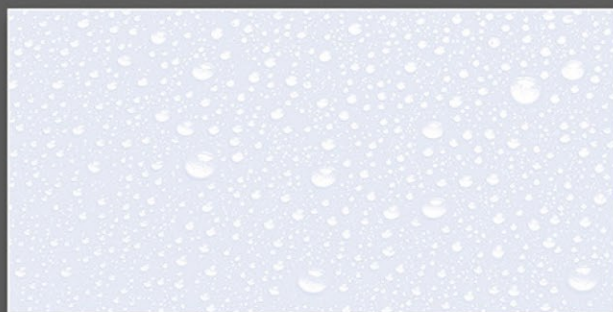
9002\_LT-(continue)  
9002\_HL1-(Punch)  
9002\_HL2-(Random)  
9002\_DK-(continue)



# GLOSSY SERIES



**NOVAC**  
CERAMIC  
Committed to Quality

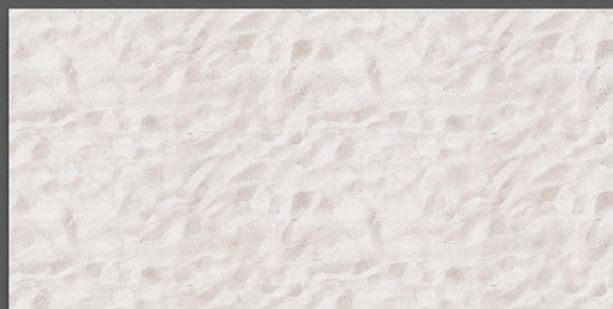


9003\_LT-(continue)  
9003\_HL1-(continue)  
9003\_HL2-(continue)  
9003\_DK-(continue)

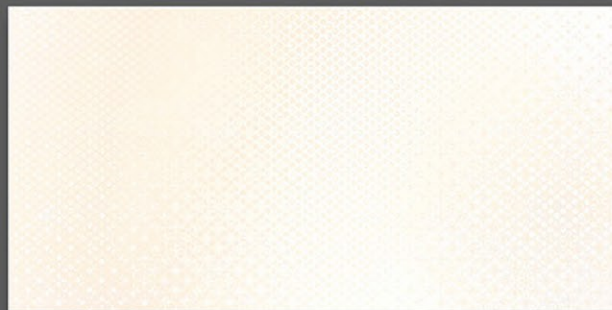
9004\_LT-(continue)  
9004\_HL1-(continue)  
9004\_HL2-(continue)  
9004\_DK-(continue)



# GLOSSY SERIES



9005\_LT-(continue)  
9005\_HL1-(Plain)  
9005\_HL2-(Plain)  
9005\_DK-(continue)



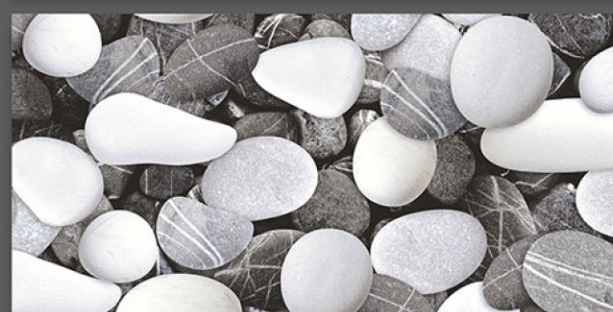
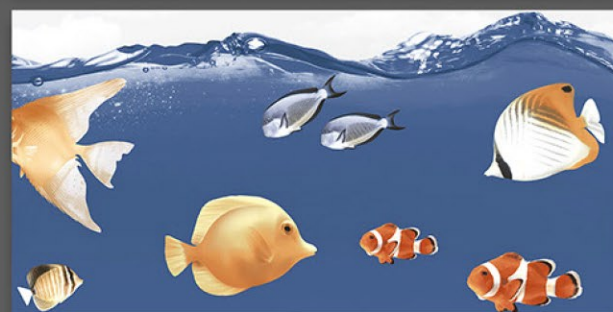
9006\_LT-(Random)  
9006\_HL1-A-(Plain)  
9006\_HL1-B-(Plain)  
9006\_DK-(Random)



# GLOSSY SERIES



**NOVAC**  
CERAMIC  
Committed to Quality



9007\_LT-(continue)  
9007\_HL1-(continue)  
9007\_HL2-(continue)  
9007\_DK-(continue)

9008\_LT-(continue)  
9008\_HL1-(continue)  
9008\_HL2-(continue)  
9008\_DK-(continue)



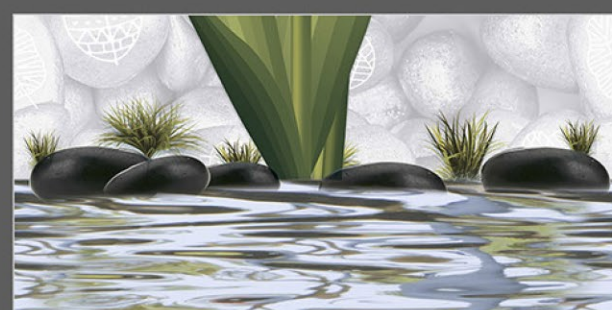
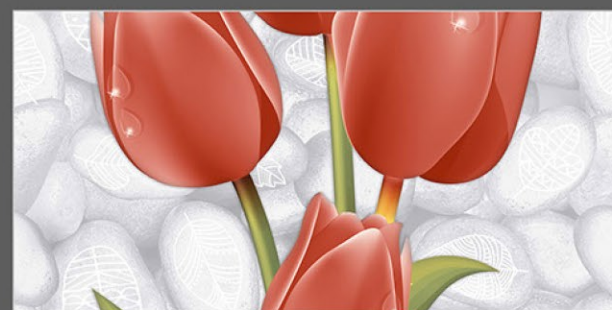
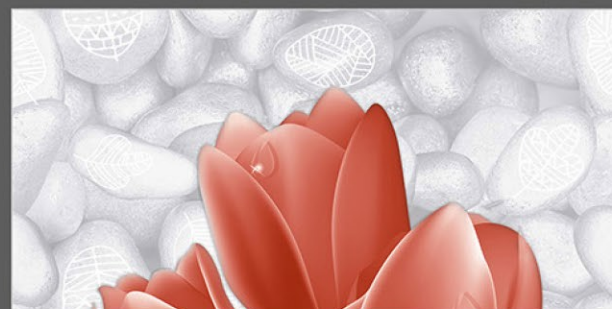
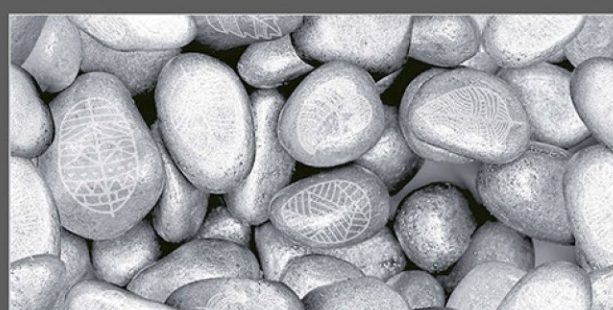
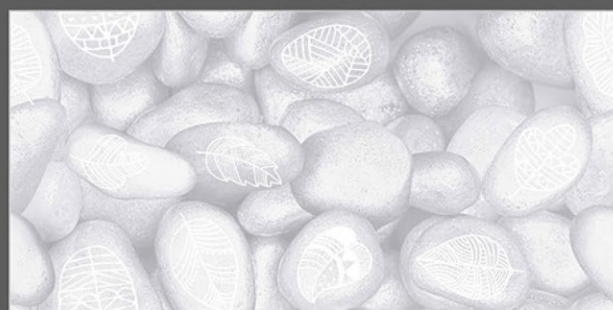
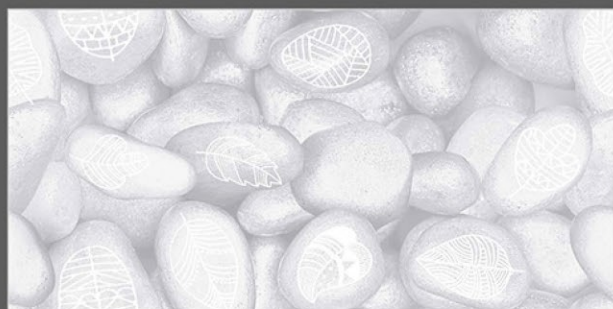


**NOVAC**

CERAMIC

Committed to Quality

# GLOSSY SERIES



9009\_LT-(continue)

9009\_HL3-(Plain)

9009\_DK-(continue)

9009\_HL1-A-(Plain)

9009\_HL1-B-(Plain)

9009\_HL1-C-(Plain)

9009\_HL1-D-(Plain)



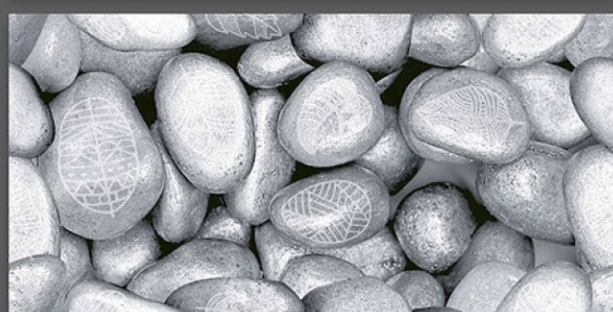
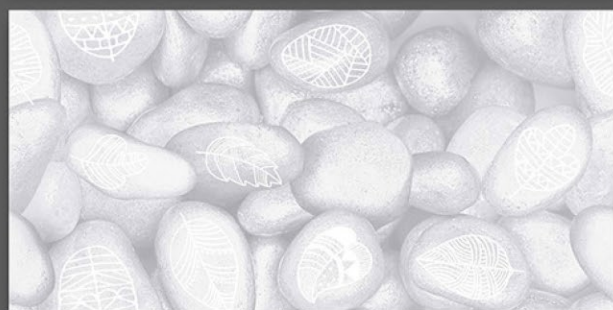
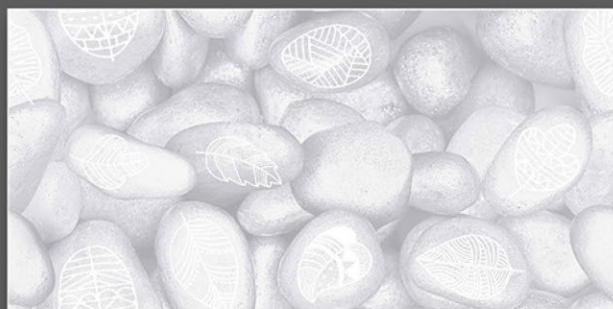


**NOVAC**

CERAMIC

Committed to Quality

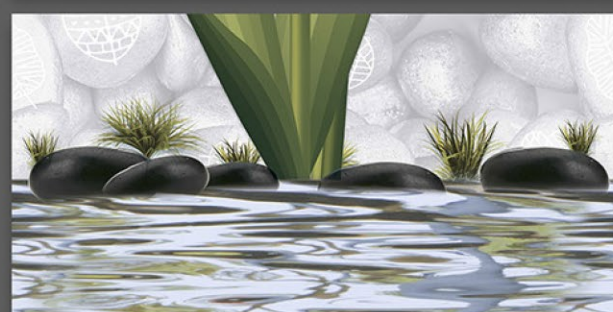
# GLOSSY SERIES



9009\_LT-(continue)

9009\_HL3-(Plain)

9009\_DK-(continue)



9009\_HL2-A-(Plain)

9009\_HL2-B-(Plain)

9009\_HL2-C-(Plain)

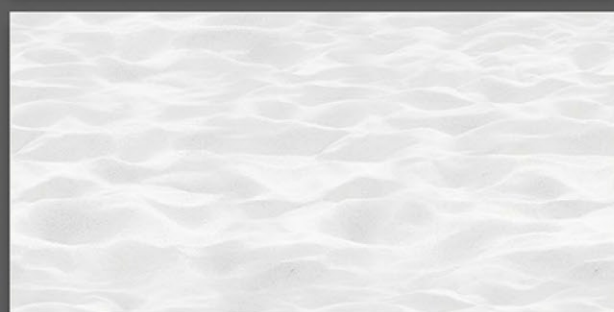
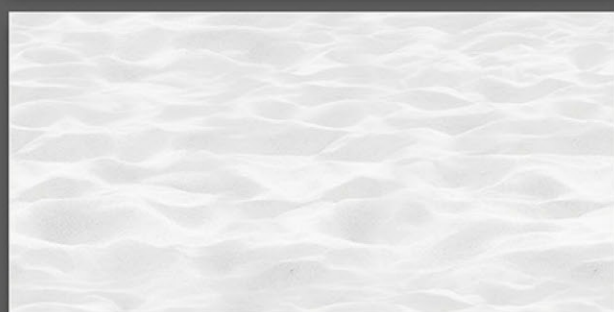
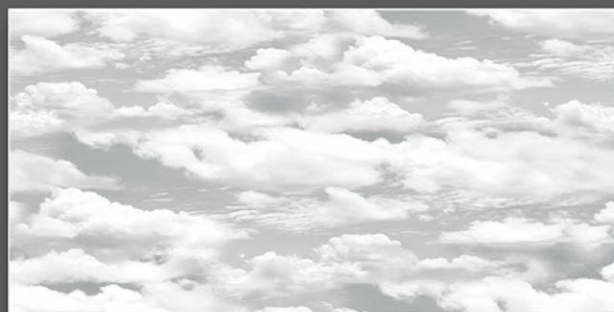
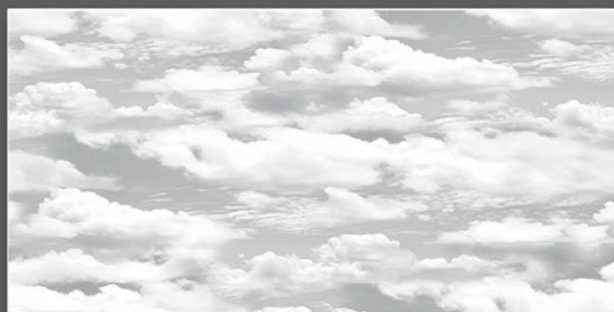
9009\_HL2-D-(Plain)





**NOVAC**  
CERAMIC  
Committed to Quality

**GLOSSY SERIES**



9010\_LT-(continue)  
9010\_HL1-A-(continue)  
9010\_HL1-B-(continue)  
9010\_DK-(continue)

9010\_LT-(continue)  
9010\_HL2-A-(continue)  
9010\_HL2-B-(continue)  
9010\_DK-(continue)





**NOVAC**  
CERAMIC  
Committed to Quality

GLOSSY SERIES



9011\_LT-(continue)  
9011\_HL1-A-(continue)  
9011\_HL1-B-(continue)  
9011\_DK-(continue)

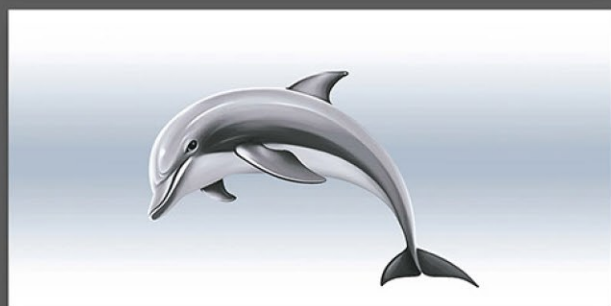
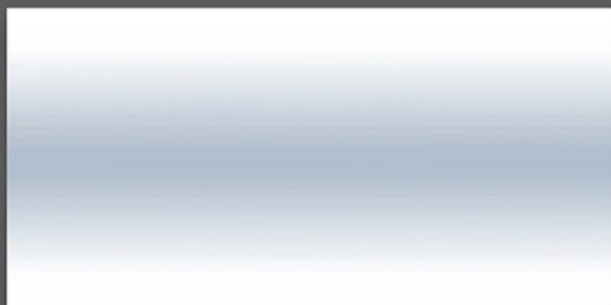
9011\_LT-(continue)  
9011\_HL2-A-(continue)  
9011\_HL2-B-(continue)  
9011\_DK-(continue)



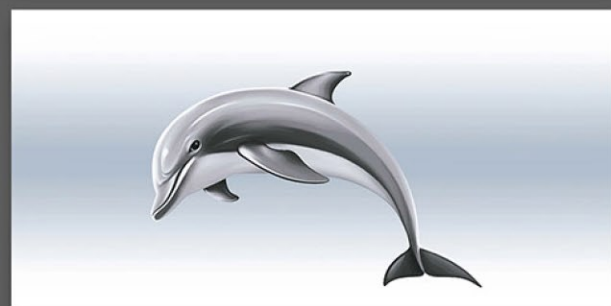
# GLOSSY SERIES



**NOVAC**  
CERAMIC  
Committed to Quality



9012\_LT-(continue/Plain)  
9012\_HL1-A-(continue/Plain)  
9012\_HL1-B-(continue/Plain)  
9012\_DK-(continue/Plain)



9012\_LT-(continue/Plain)  
9012\_HL1-A-(continue/Plain)  
9012\_HL1-B-(continue/Plain)  
9012\_DK-(continue/Plain)





## **NOVAC CERAMIC LLP**

At: Lalpar, Real Plaza - 1, Near Omkar Petroleum,  
8-A, National Highway, Morbi - 363 642.

Cell: +91 97251 20510

[www.novacceramic.com](http://www.novacceramic.com) | [info@novacceramic.com](mailto:info@novacceramic.com)