



NOVAC

C E R A M I C

Committed to Quality



GLOSSY V3

300
X_{mm}
600

DIGITAL WALL TILES

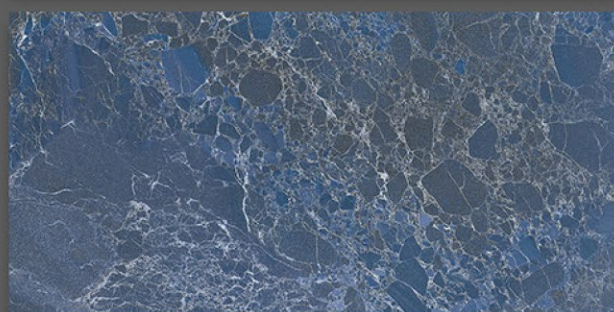
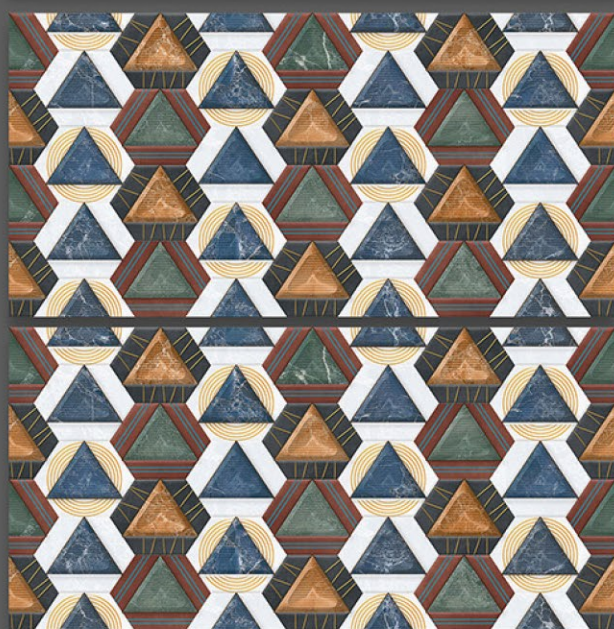


NOVAC

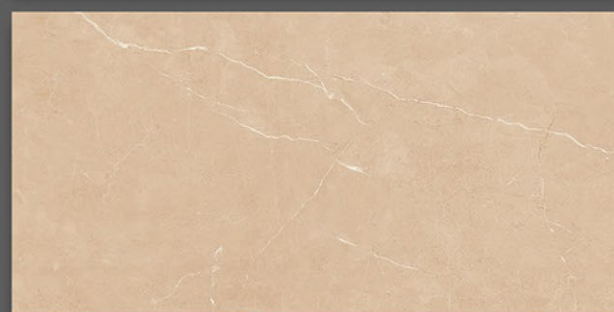
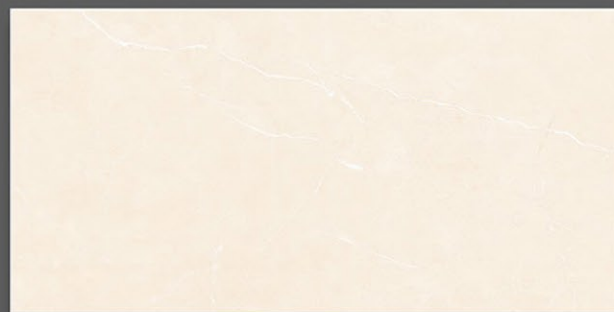
CERAMIC

Committed to Quality

GLOSSY SERIES



3002_LT-(Random)
3002_HL1-(Punch)
3002_DK-(Random)



3003_LT-(Random)
3003_HL1-(Punch)
3003_DK-(Random)

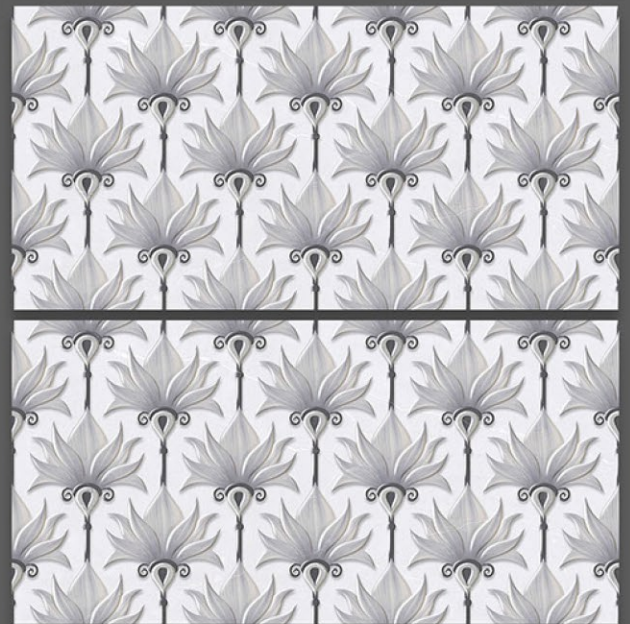


NOVAC
CERAMIC
Committed to Quality

GLOSSY SERIES



3004_LT-(Random)
3004_HL1-(Punch)
3004_DK-(Random)



3004_LT-(Random)
3004_HL2-(Punch)
3004_DK-(Random)

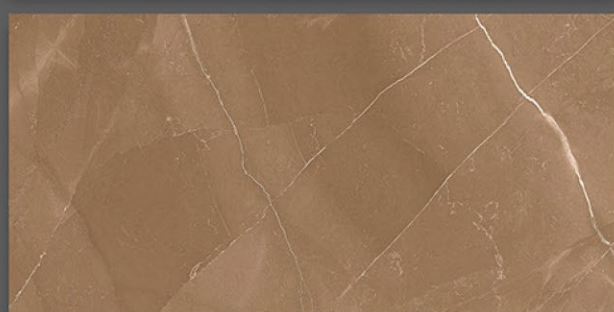
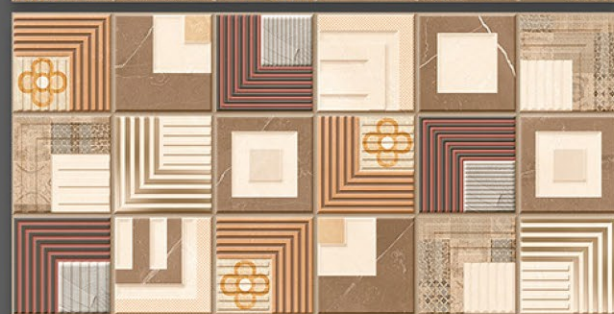
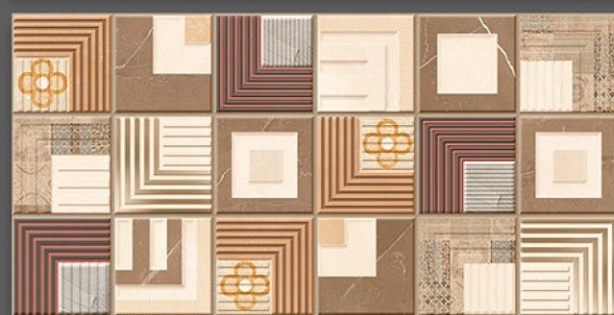
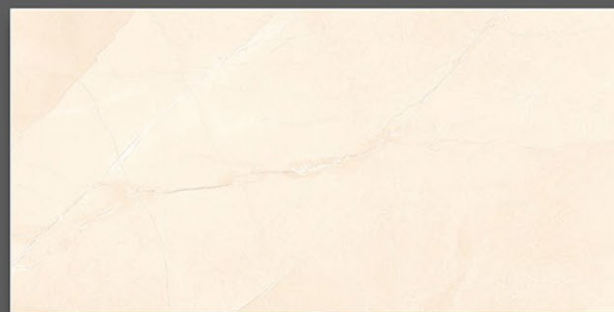
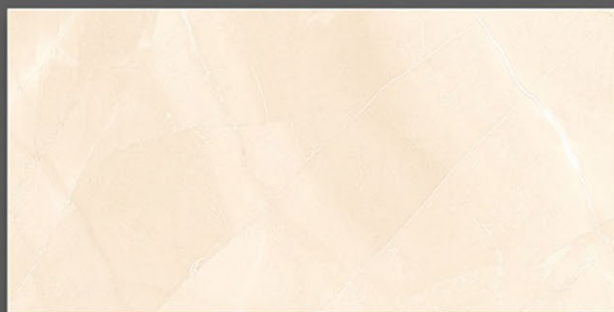


NOVAC

CERAMIC

Committed to Quality

GLOSSY SERIES



3005_LT-(Random)
3005_HL1-(Punch)
3005_DK-(Random)

3005_LT-(Random)
3005_HL2-(Punch)
3005_DK-(Random)

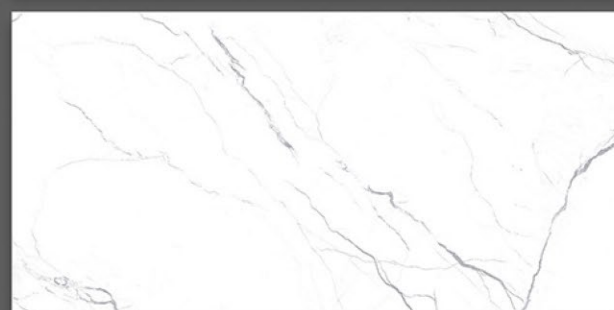
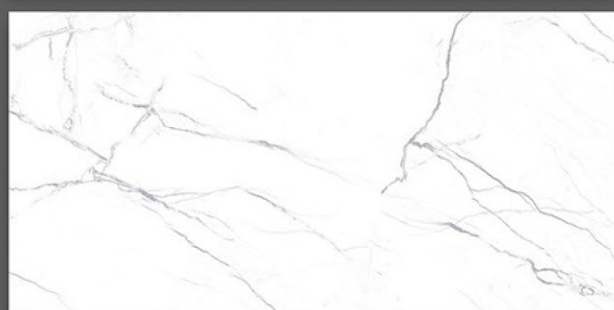
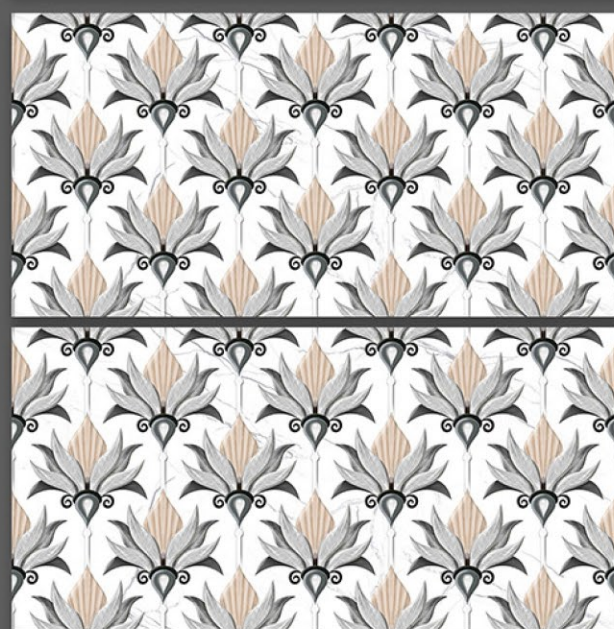
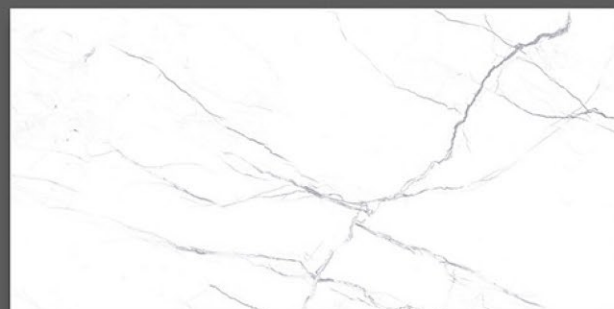
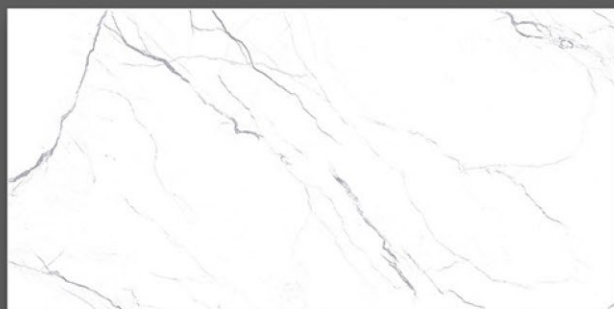


NOVAC

CERAMIC

Committed to Quality

GLOSSY SERIES



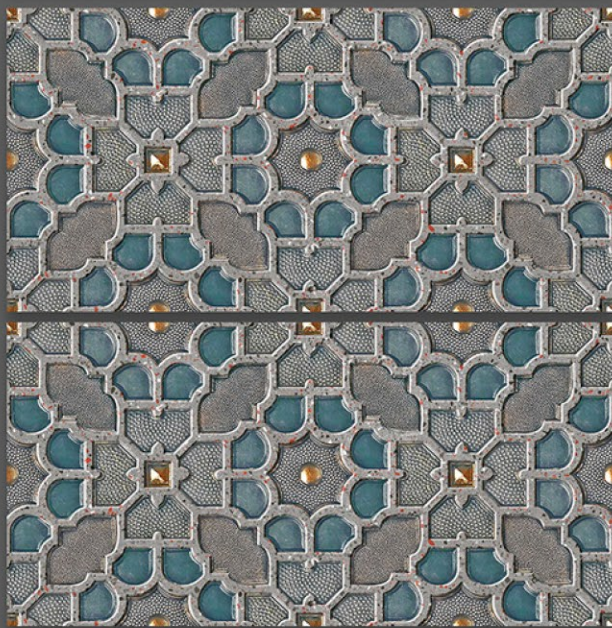
3006_LT-(Random)
3006_HL1-(Punch)
3006_LT-(Random)

3006_LT-(Random)
3006_HL2-(Punch)
3006_LT-(Random)



NOVAC
CERAMIC
Committed to Quality

GLOSSY SERIES



3008_LT-(Random)
3008_HL1-(Punch)
3008_DK-(Random)

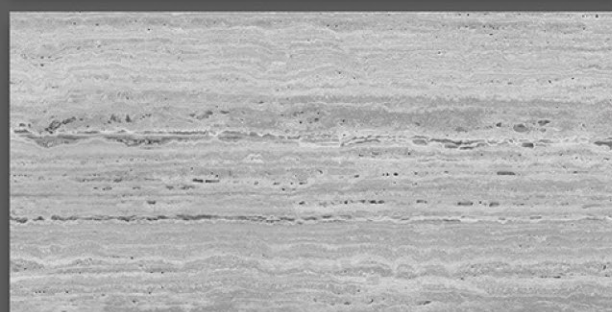
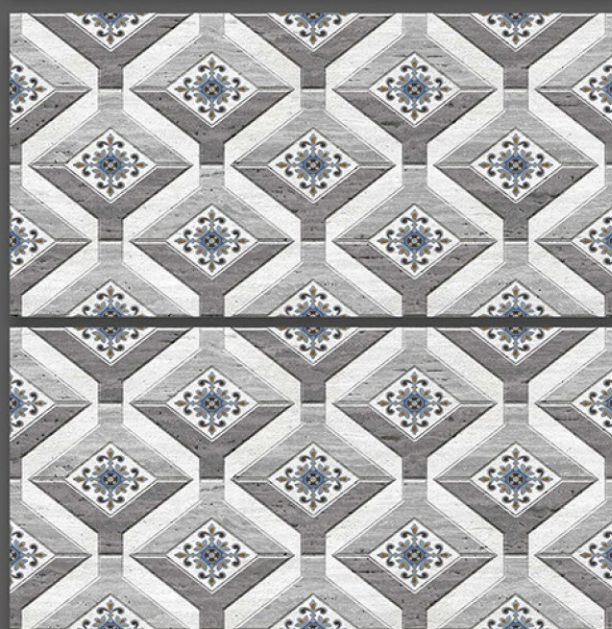
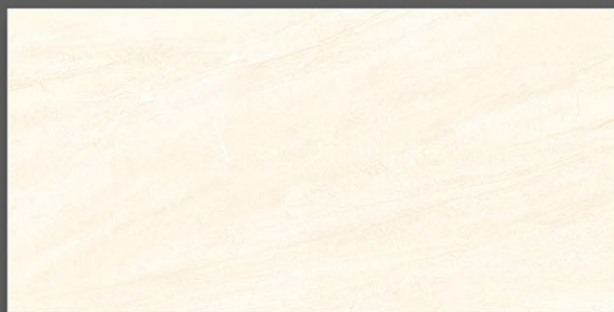


3008_LT-(Random)
3008_HL3-(Punch)
3008_DK-(Random)

GLOSSY SERIES



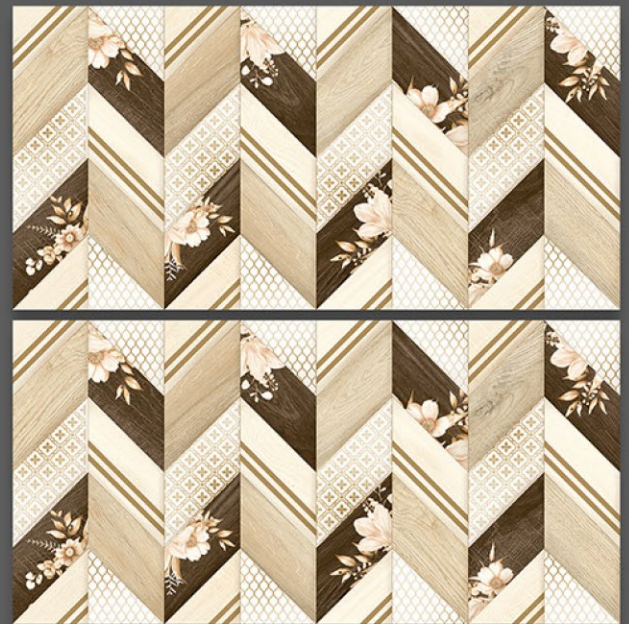
NOVAC
CERAMIC
Committed to Quality



3009_LT-(Random)
3009_HL2-(Punch)
3009_DK-(Random)

3012_LT-(Random)
3012_HL2-(Punch)
3012_DK-(Random)

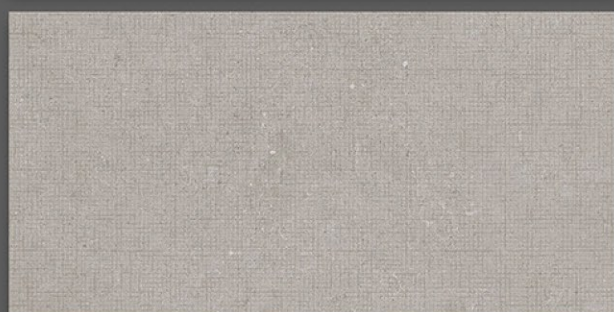
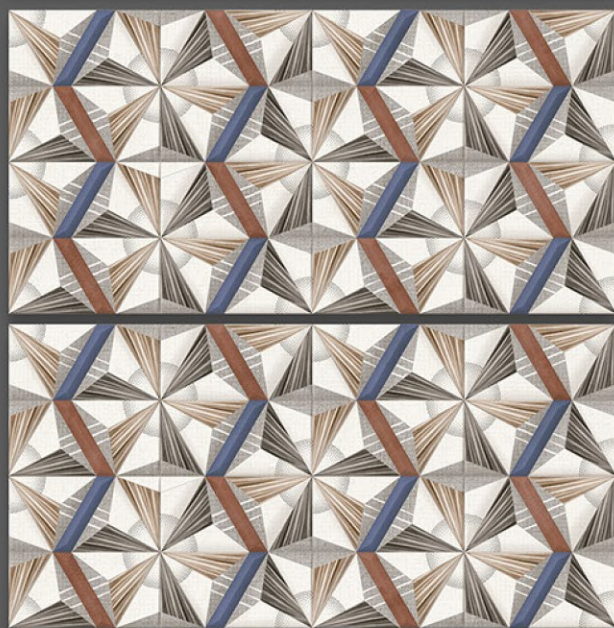
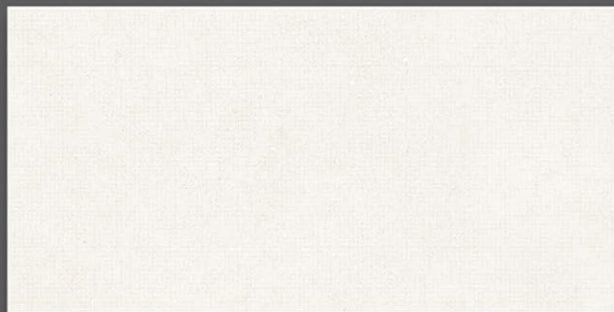
GLOSSY SERIES



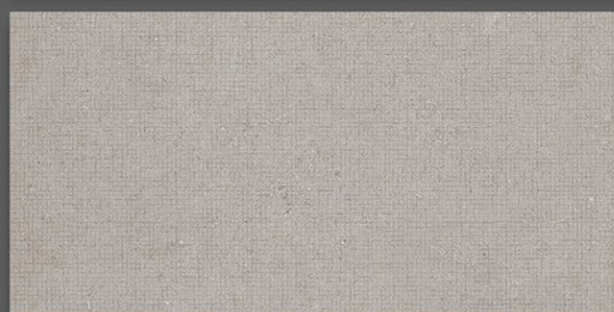
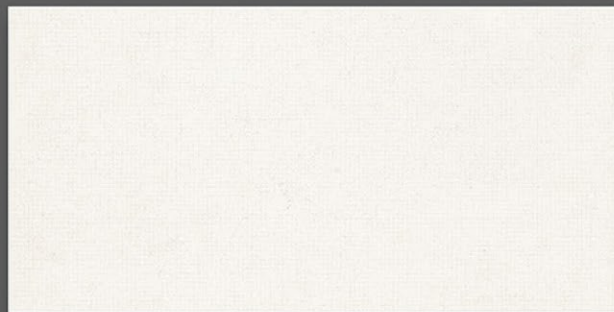
3013_LT-(Random)
3013_HL1-(Punch)
3013_DK-(Random)

3013_LT-(Random)
3013_HL2-(Punch)
3013_DK-(Random)

GLOSSY SERIES

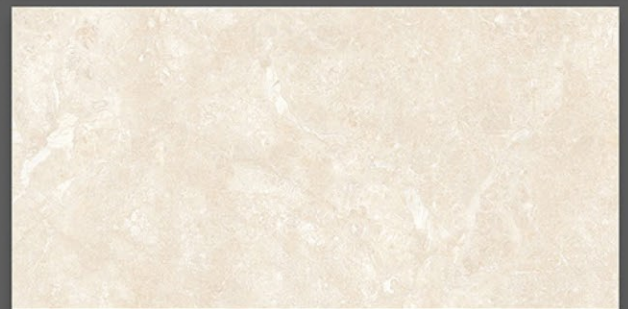
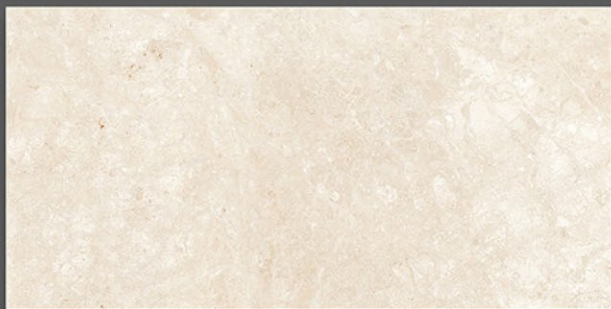


3014_LT-(Random)
3014_HL1-(Punch)
3014_DK-(Random)



3014_LT-(Random)
3014_HL2-(Punch)
3014_DK-(Random)

GLOSSY SERIES



3016_LT-(Random)
3016_HL1-(Punch)
3016_LT-(Random)

3016_LT-(Random)
3016_HL2-(Punch)
3016_LT-(Random)

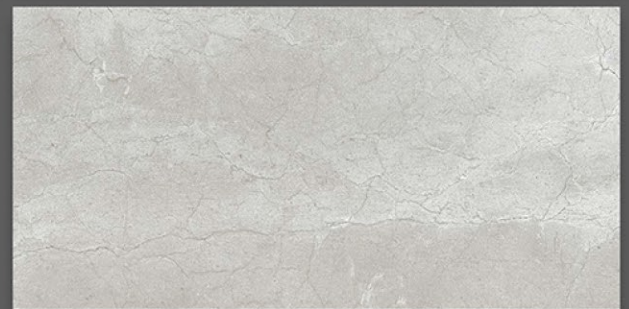


NOVAC
CERAMIC
Committed to Quality

GLOSSY SERIES



3046_LT-(Random)
3046_HL1-(Punch)
3046_DK-(Random)



3046_LT-(Random)
3046_HL2-(Punch)
3046_DK-(Random)

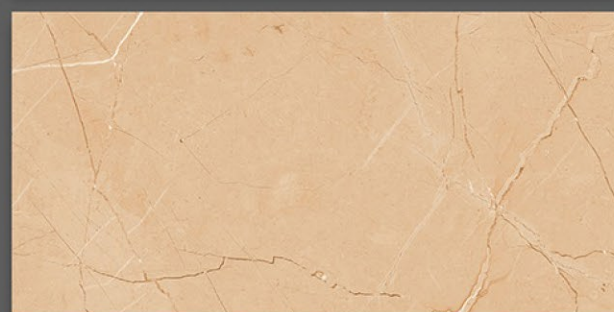
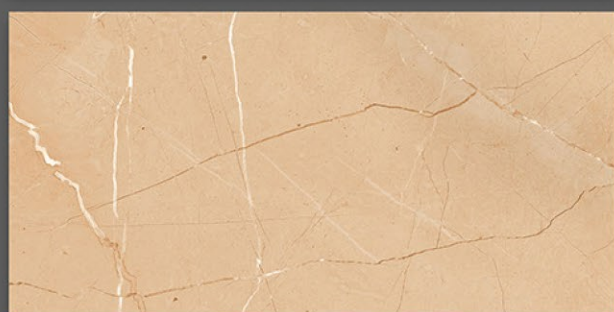
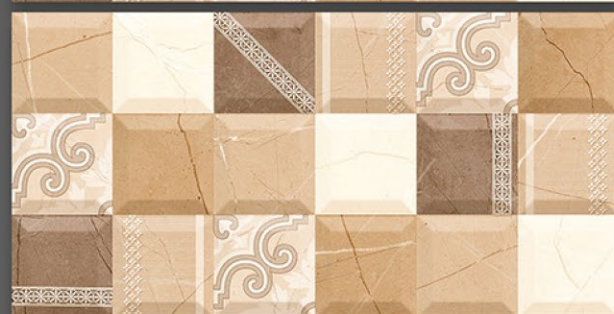
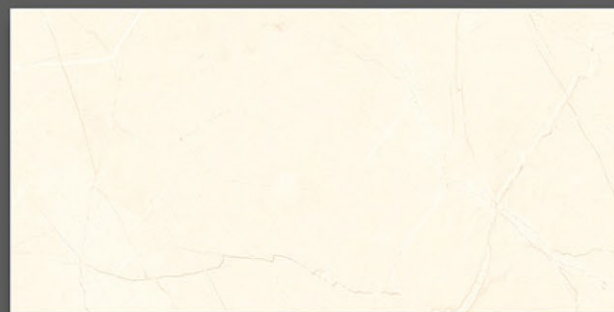
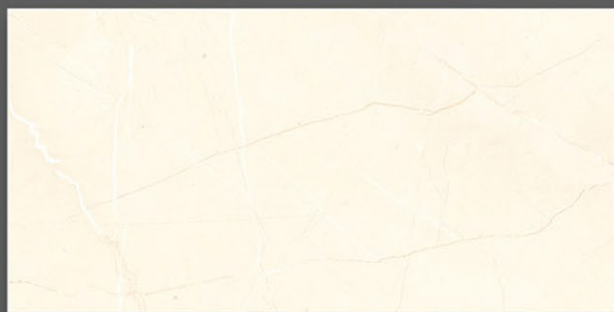


NOVAC

CERAMIC

Committed to Quality

GLOSSY SERIES



3050_LT-(Random)

3050_HL1-(Punch)

3050_DK-(Random)

3050_LT-(Random)

3050_HL2-(Punch)

3050_DK-(Random)

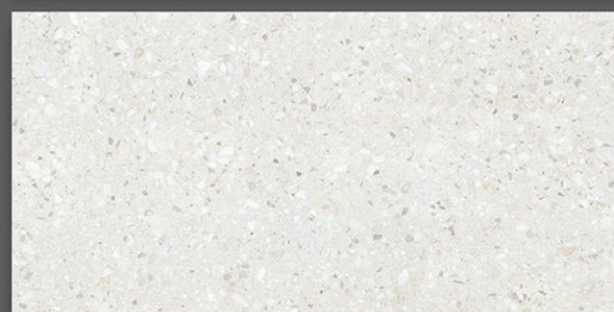
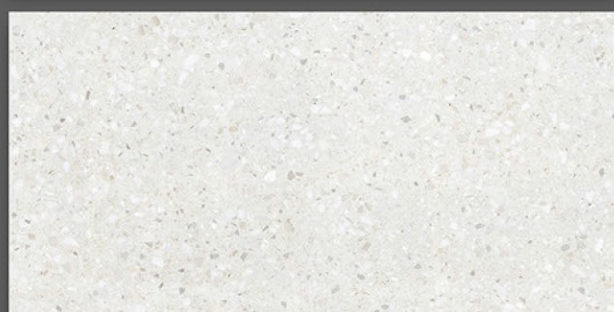
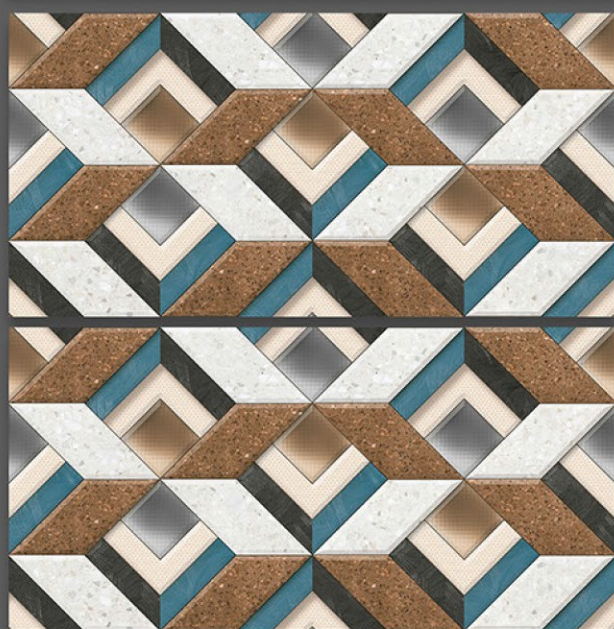
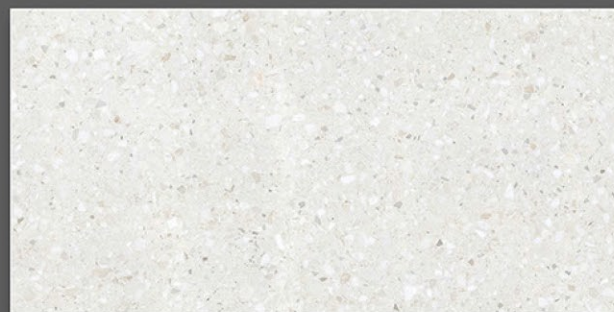
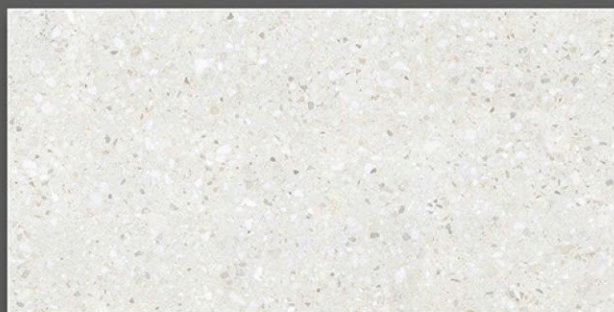


NOVAC

CERAMIC

Committed to Quality

GLOSSY SERIES



3051_LT-(Random)
3051_HL1-(Punch)
3051_LT-(Random)

3051_LT-(Random)
3051_HL2-(Punch)
3051_LT-(Random)

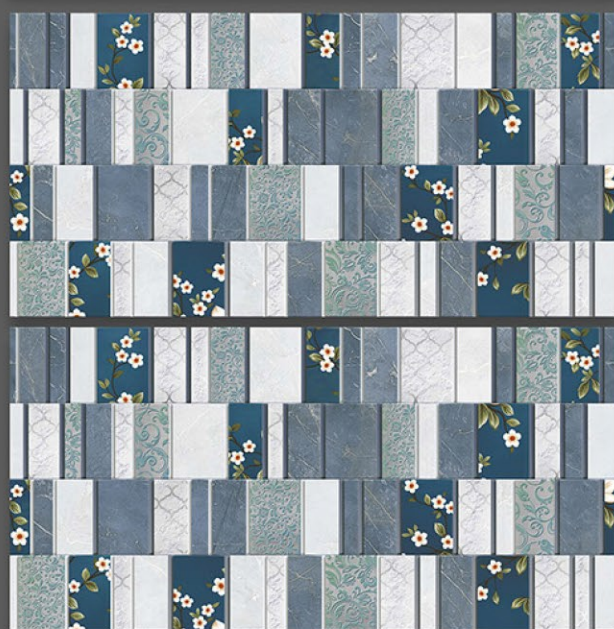
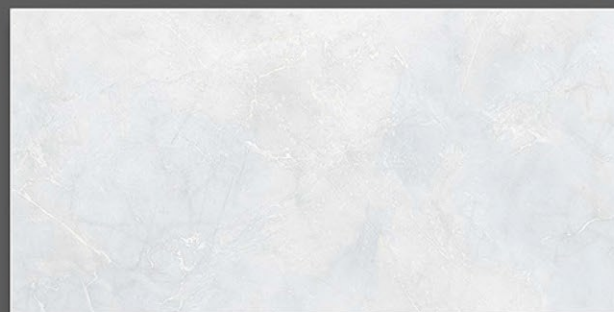


NOVAC

CERAMIC

Committed to Quality

GLOSSY SERIES



3054_LT-(Random)
3054_HL1-(Punch)
3054_DK-(Random)

3054_LT-(Random)
3054_HL2-(Punch)
3054_DK-(Random)

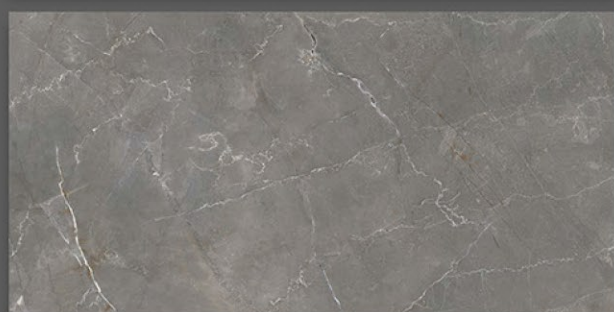
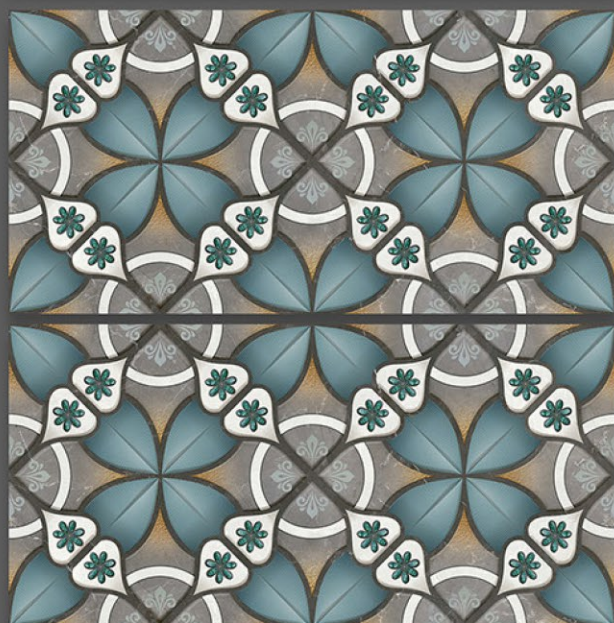
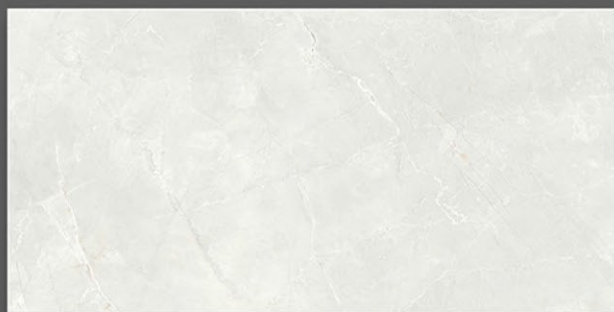


NOVAC

CERAMIC

Committed to Quality

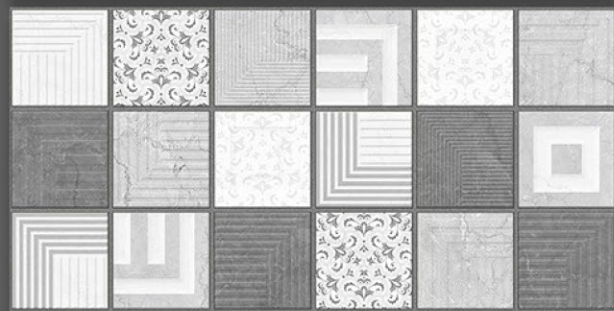
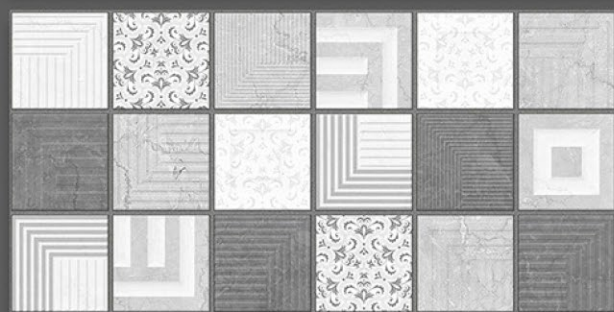
GLOSSY SERIES



3055_LT-(Random)
3055_HL1-(Punch)
3055_DK-(Random)

3055_LT-(Random)
3055_HL2-(Punch)
3055_DK-(Random)

GLOSSY SERIES



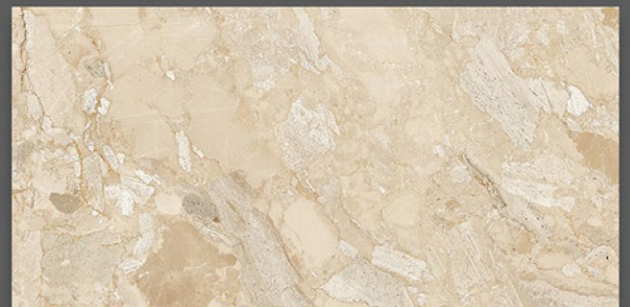
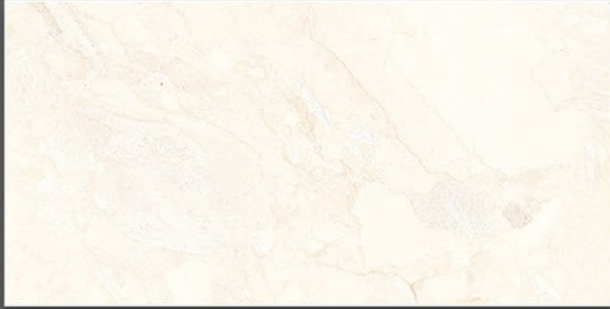
3056_LT-(Random)
3056_HL1-(Punch)
3056_DK-(Random)

3056_LT-(Random)
3056_HL2-(Punch)
3056_DK-(Random)



NOVAC
CERAMIC
Committed to Quality

GLOSSY SERIES



3057_LT-(Random)
3057_HL1-(Punch)
3057_DK-(Random)

3057_LT-(Random)
3057_HL2-(Punch)
3057_DK-(Random)



NOVAC
CERAMIC
Committed to Quality

GLOSSY SERIES



3060_LT-(Random)
3060_HL1-(Punch)
3060_DK-(Random)

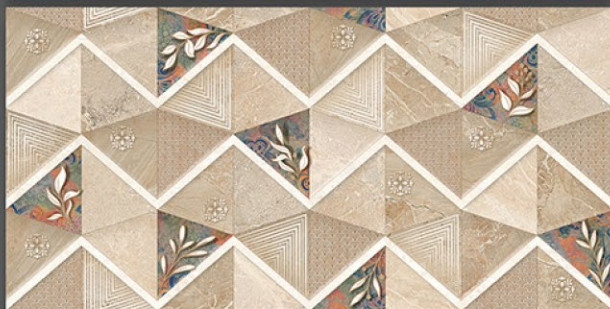


3060_LT-(Random)
3060_HL2-(Punch)
3060_DK-(Random)



NOVAC
CERAMIC
Committed to Quality

GLOSSY SERIES



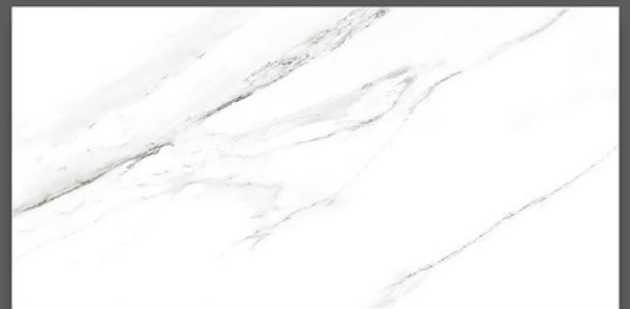
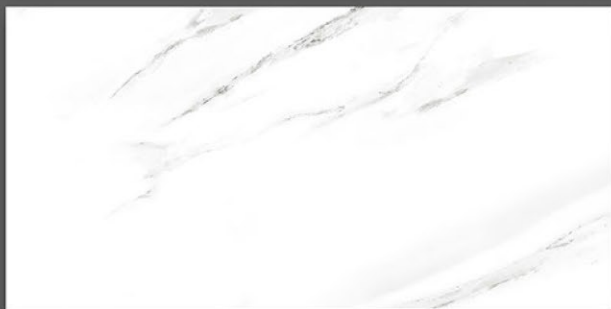
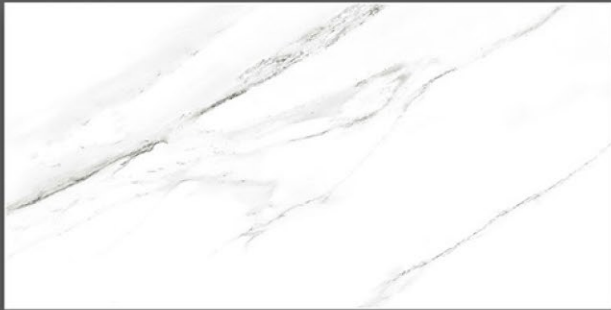
3061_LT-(Random)
3061_HL1-(Punch)
3061_DK-(Random)

3061_LT-(Random)
3061_HL2-(Punch)
3061_DK-(Random)



NOVAC
CERAMIC
Committed to Quality

GLOSSY SERIES



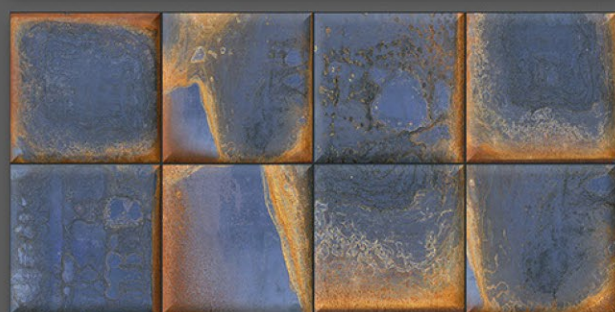
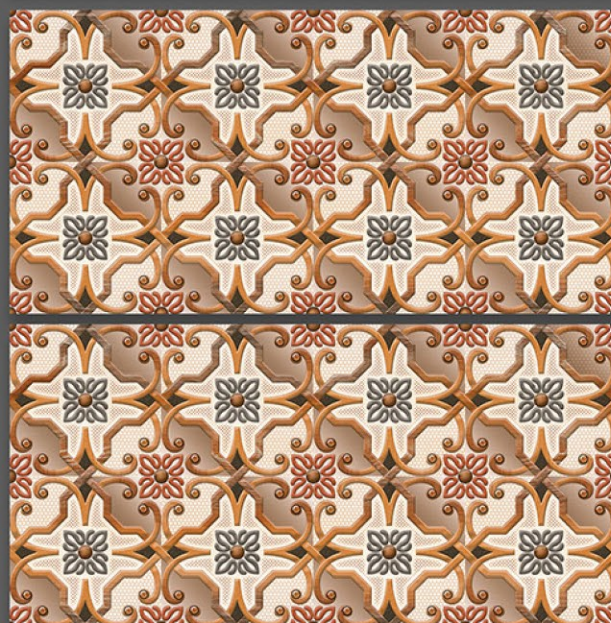
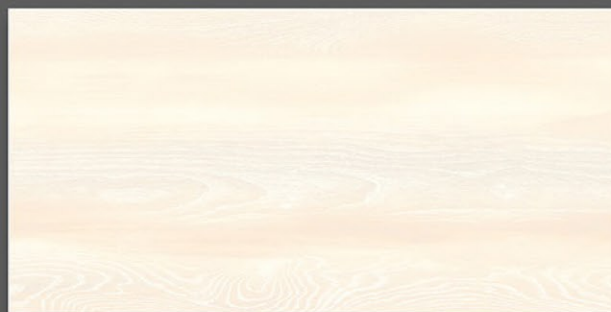
3062_LT-(Random)
3062_HL1-(Punch)
3062_LT-(Random)

3062_LT-(Random)
3062_HL1-(Punch)
3062_LT-(Random)



NOVAC
CERAMIC
Committed to Quality

GLOSSY SERIES



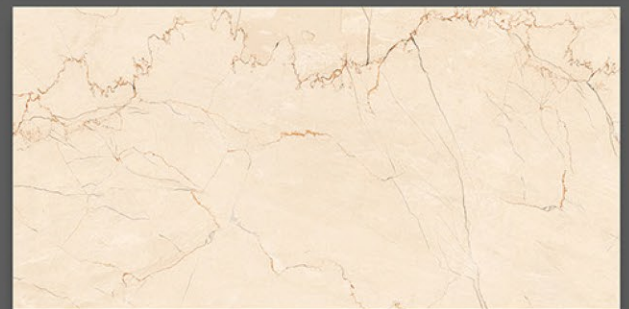
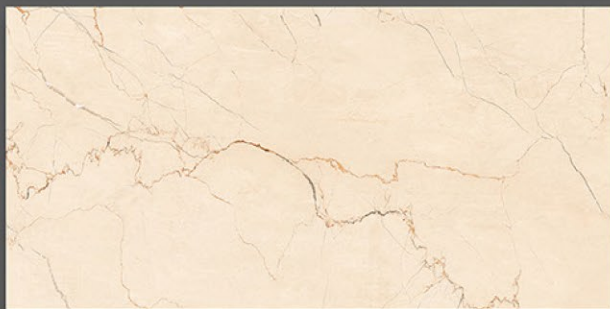
3065_LT-(Punch)
3065_HL1-(Punch)
3065_DK-(Punch)

3066_LT-(Random)
3066_HL1-(Punch)
3066_DK-(Random)

GLOSSY SERIES



NOVAC
CERAMIC
Committed to Quality



3068_LT-(Random)
3068_HL1-(Punch)
3068_DK-(Random)

3068_LT-(Random)
3068_HL2-(Punch)
3068_DK-(Random)



NOVAC
CERAMIC
Committed to Quality

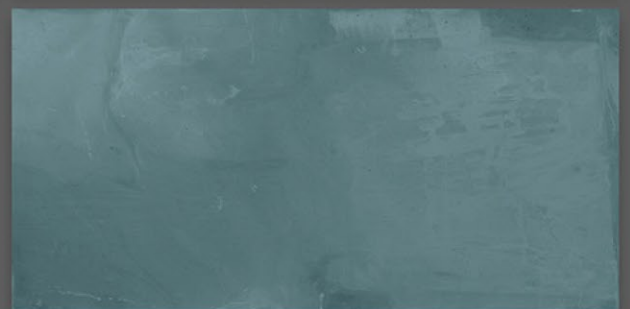
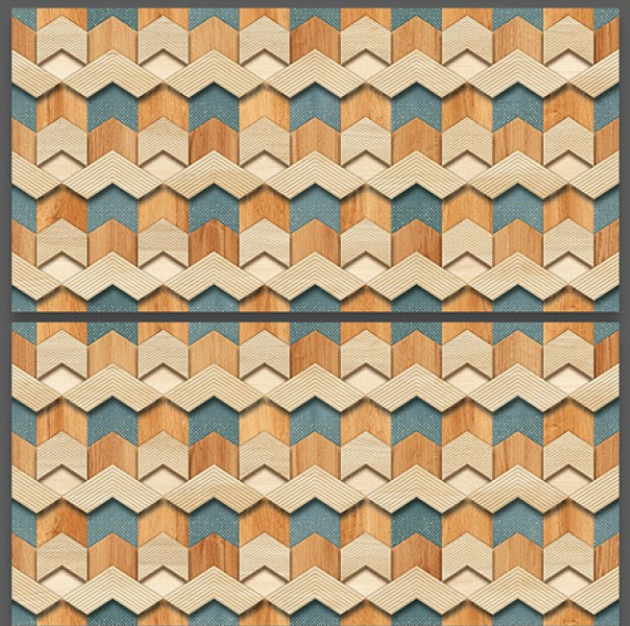
GLOSSY SERIES



3069_LT-(Plain/continue)
3069_HL1-(Punch)
3069_LT-(Plain/continue)

3069_LT-(Plain/continue)
3069_HL1-(Punch)
3069_LT-(Plain/continue)

GLOSSY SERIES



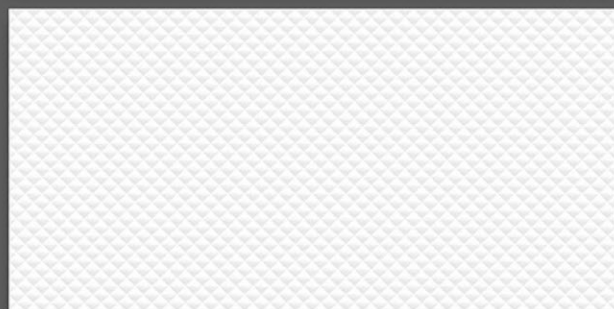
3070_LT-(Random)
3070_HL1-(Punch)
3070_DK-(Random)

3070_LT-(Random)
3070_HL2-(Punch)
3070_DK-(Random)

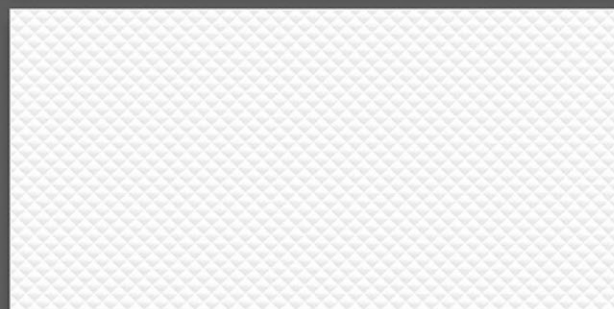
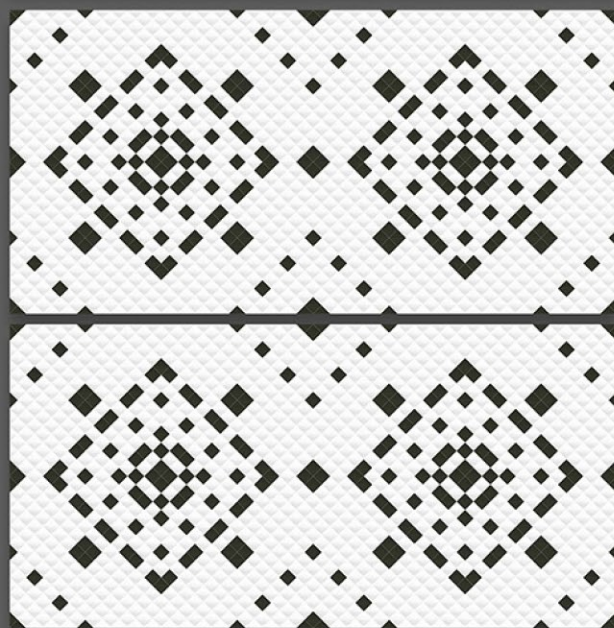
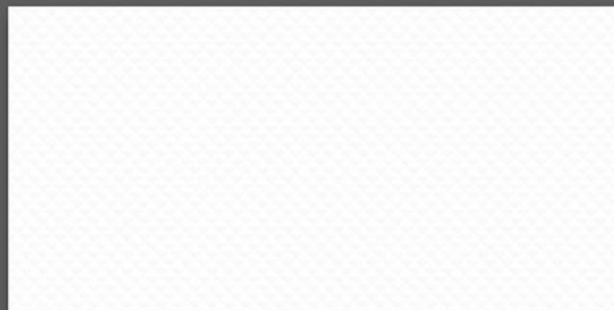
GLOSSY SERIES



NOVAC
CERAMIC
Committed to Quality



3071_LT-(Punch/White)
3071_HL1-(Punch)
3071_LT-(Punch/White)

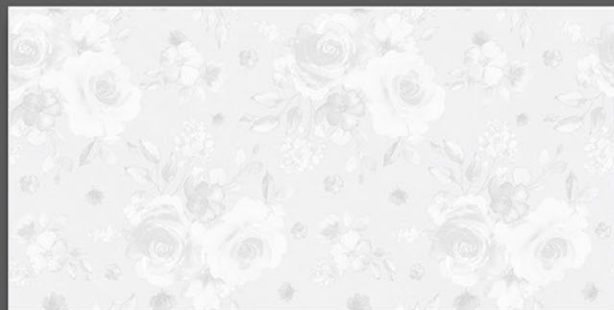


3071_LT-(Punch/White)
3071_HL2-(Punch)
3071_LT-(Punch/White)

GLOSSY SERIES



NOVAC
CERAMIC
Committed to Quality



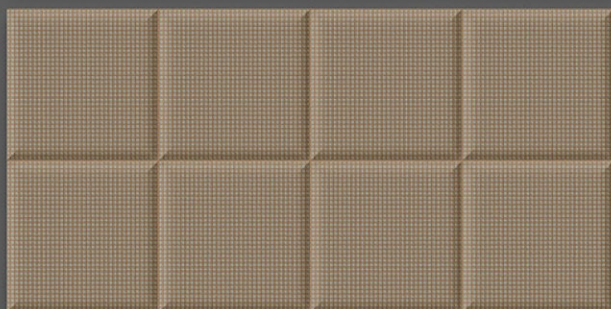
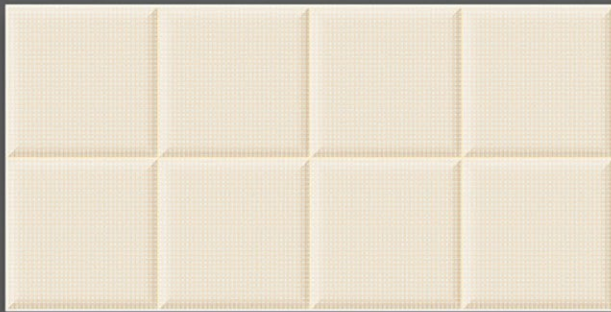
3072_LT-(Plain/continue)
3072_HL1-(Punch)
3072_LT-(Plain/continue)

3072_LT-(Plain/continue)
3072_HL2-(Punch)
3072_LT-(Plain/continue)

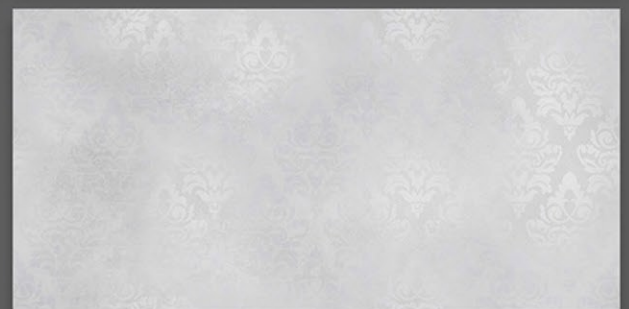


NOVAC
CERAMIC
Committed to Quality

GLOSSY SERIES

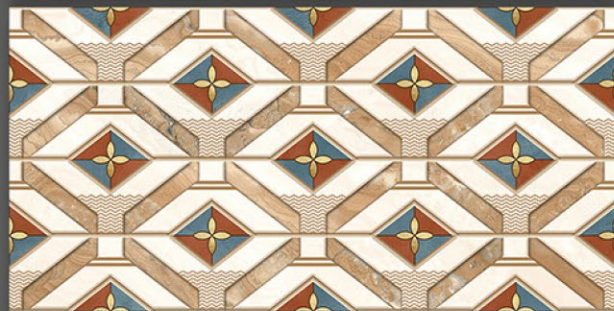
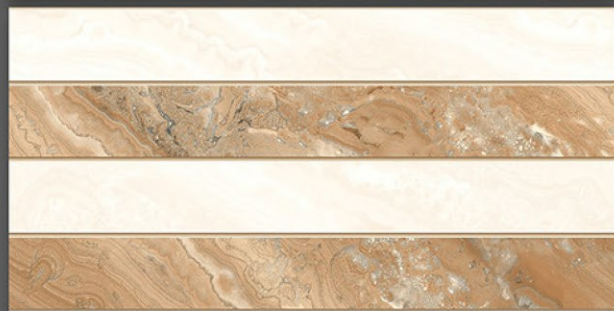
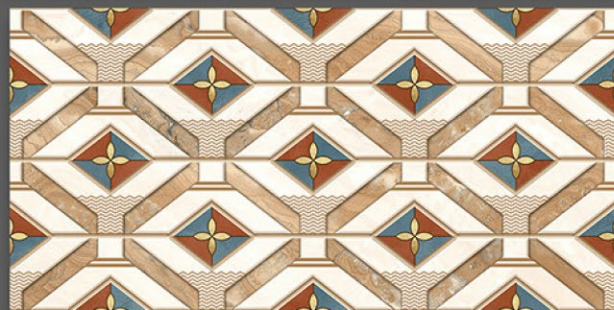
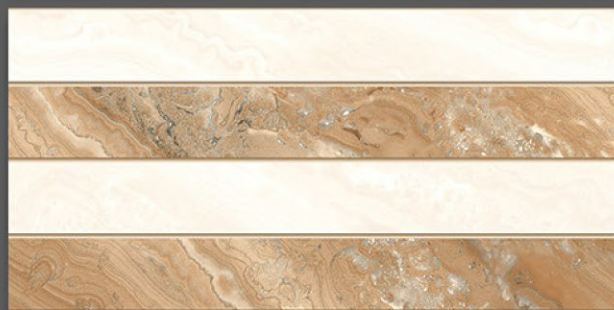
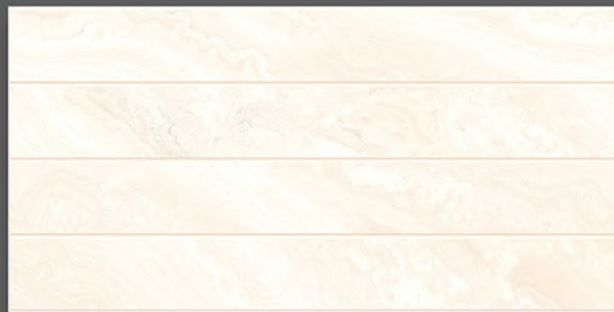
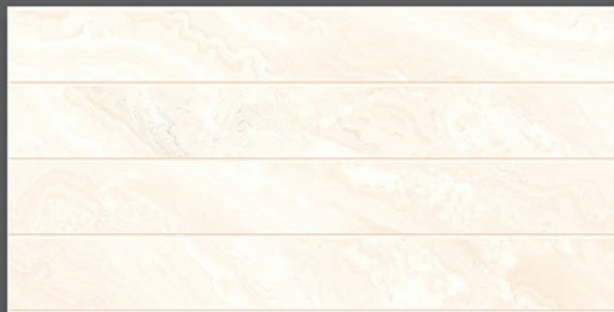


3074_LT-(Punch)
3074_HL1-(Punch)
3074_DK-(Punch)



3075_LT-(continue)
3075_HL1-(Punch)
3075_LT-(continue)

GLOSSY SERIES



3076_LT-(Punch/continue)
3076_HL1-(Punch/continue)
3076_DK-(Punch/continue)

3076_LT-(Punch/continue)
3076_HL2-(Punch/continue)
3076_DK-(Punch/continue)

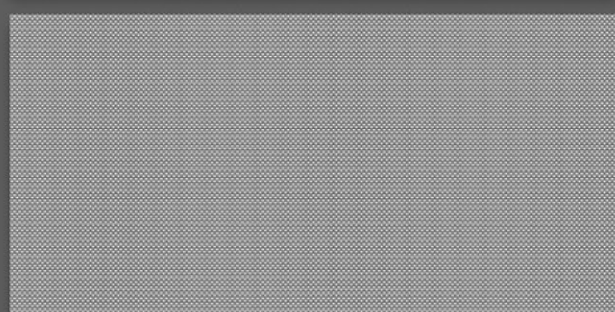
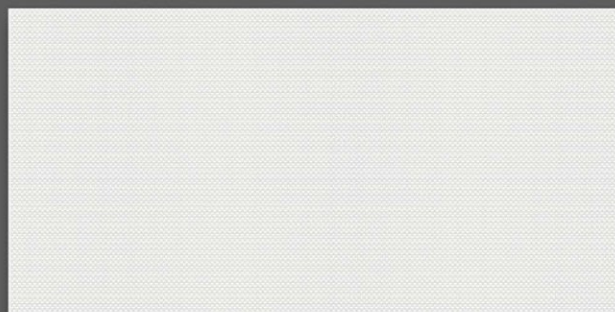


NOVAC

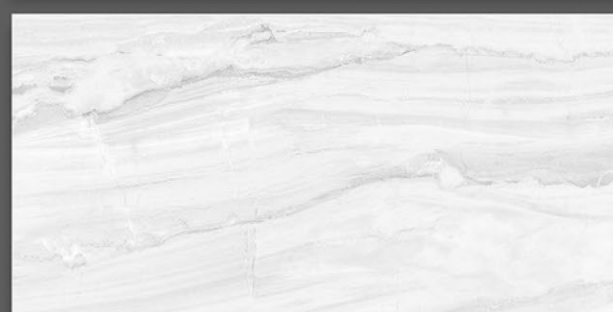
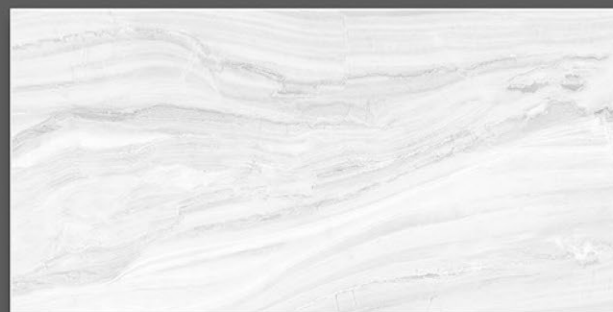
CERAMIC

Committed to Quality

GLOSSY SERIES

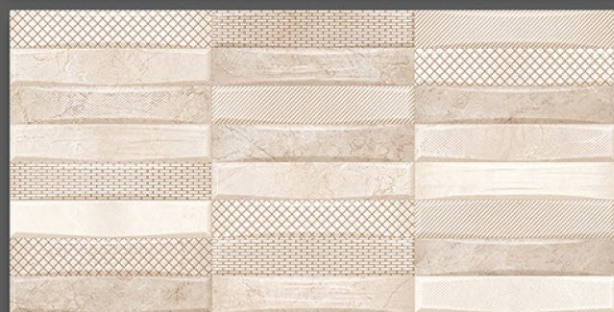
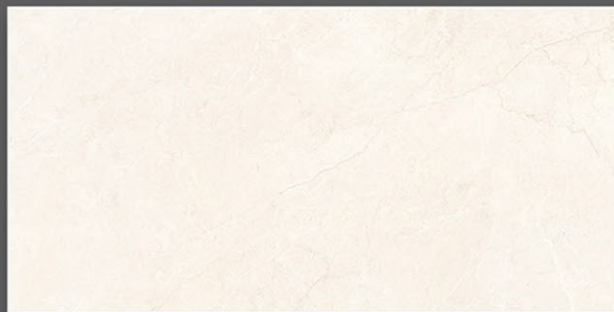


3079_LT-(continue)
3079_HL1-(Punch)
3079_DK-(continue)



3080_LT-(Random)
3080_HL1-(Punch)
3080_LT-(Random)

GLOSSY SERIES



3081_LT-(Random)
3081_HL1-(Punch)
3081_DK-(Random)

3081_LT-(Random)
3081_HL2-(Punch)
3081_DK-(Random)



NOVAC

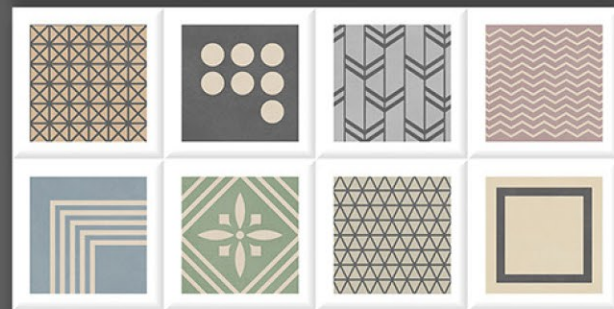
CERAMIC

Committed to Quality

GLOSSY SERIES



3082_LT-(Punch/White)
3082_HL1-(Punch)
3082_LT-(Punch/White)

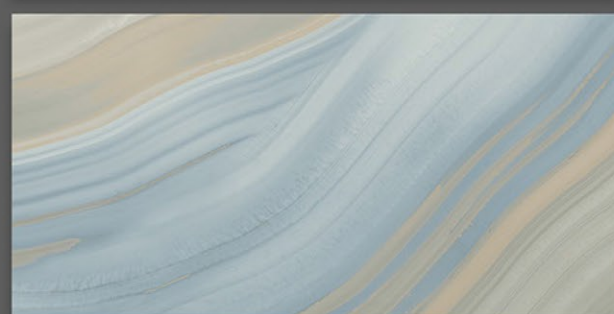
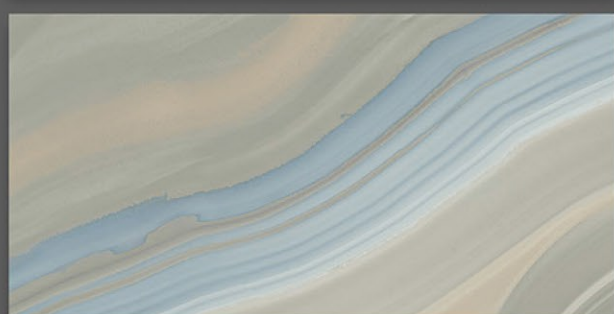
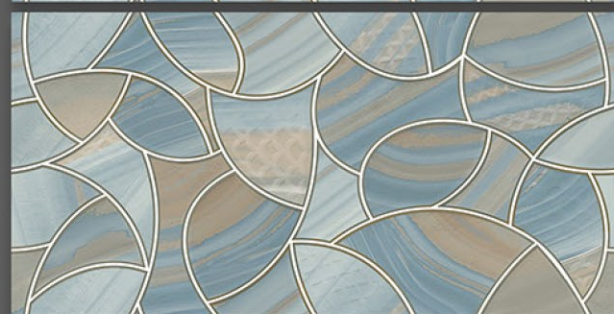
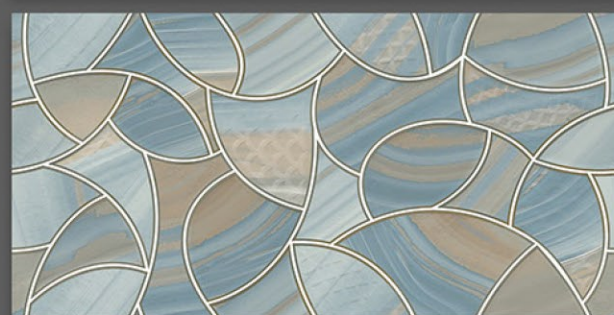
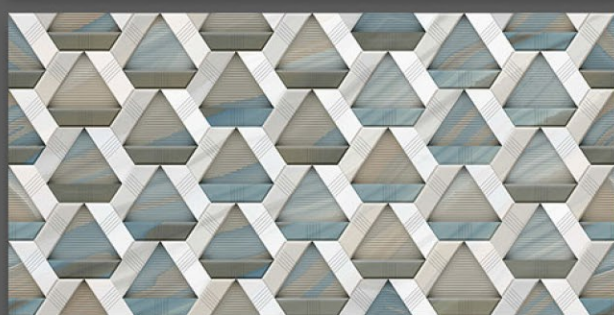


3082_LT-(Punch/White)
3082_HL2-(Punch)
3082_LT-(Punch/White)



NOVAC
CERAMIC
Committed to Quality

GLOSSY SERIES



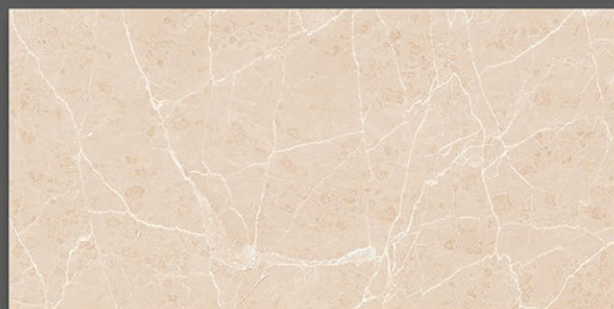
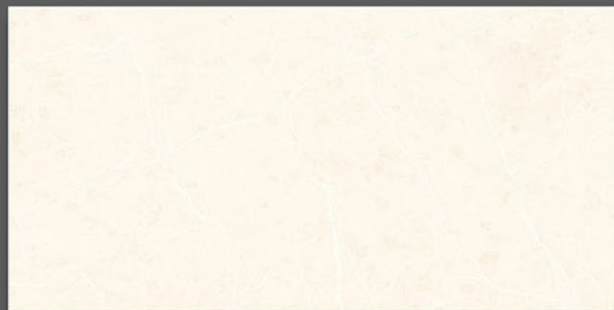
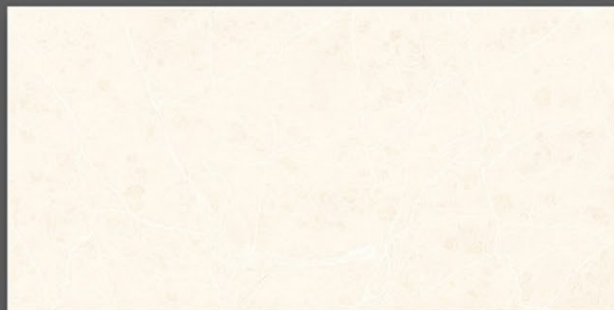
3083_LT-(Random)
3083_HL1-(Punch)
3083_DK-(Random)

3083_LT-(Random)
3083_HL2-(Punch)
3083_DK-(Random)

GLOSSY SERIES



NOVAC
CERAMIC
Committed to Quality



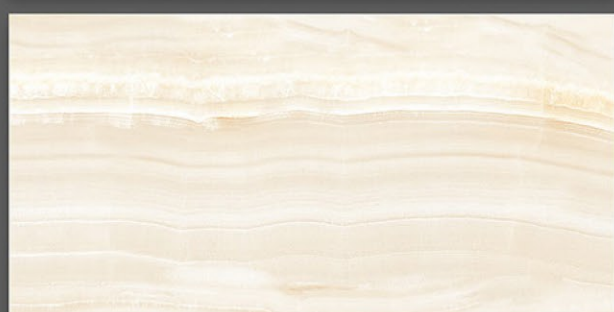
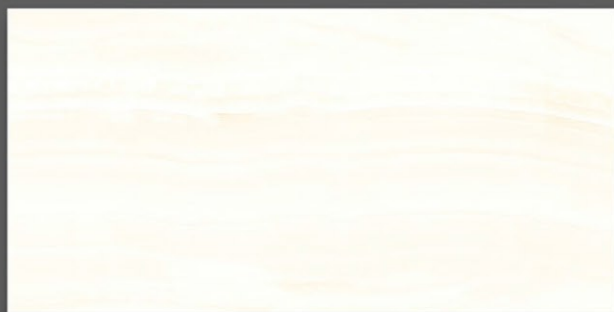
3084_LT-(Random)
3084_HL1-(Punch)
3084_DK-(Random)

3084_LT-(Random)
3084_HL2-(Punch)
3084_DK-(Random)

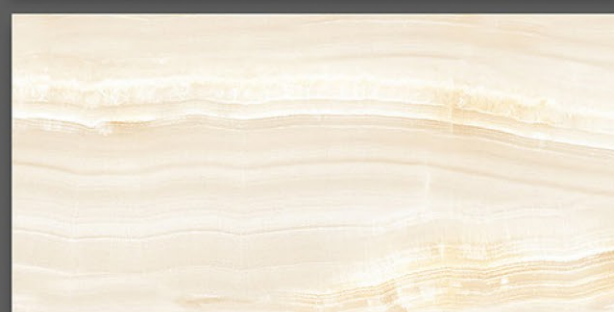
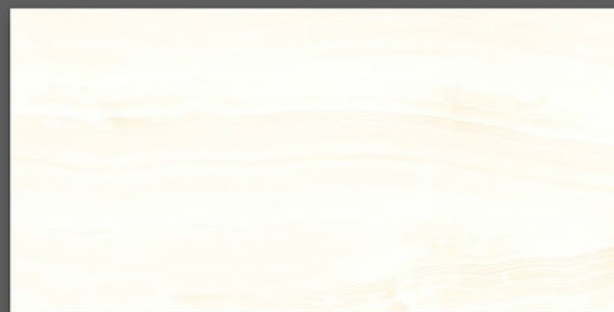


NOVAC
CERAMIC
Committed to Quality

GLOSSY SERIES



3086_LT-(Random)
3086_HL1-(Punch)
3086_DK-(Random)

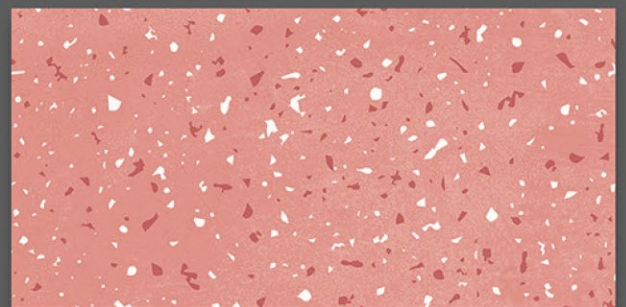
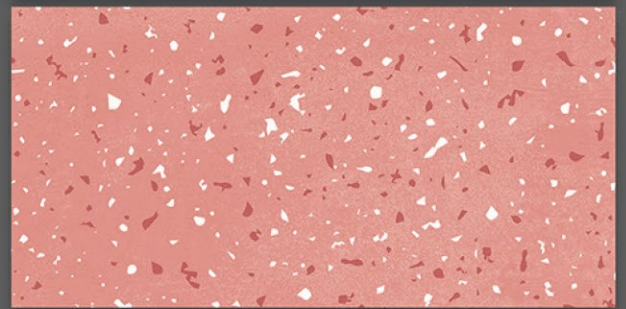
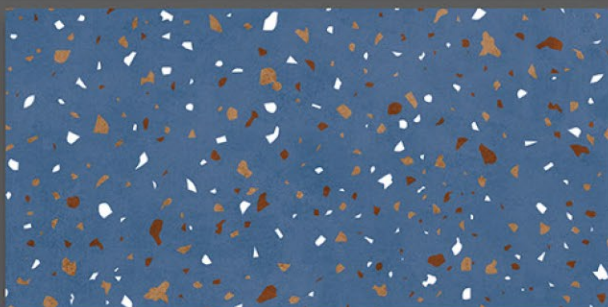
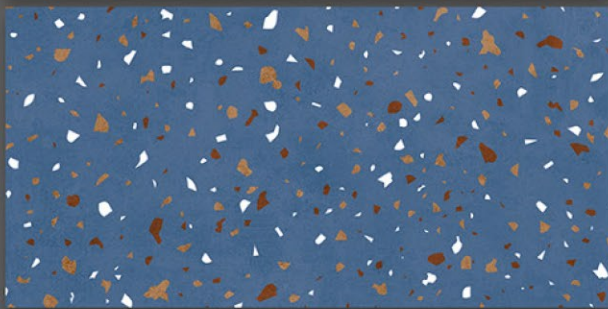
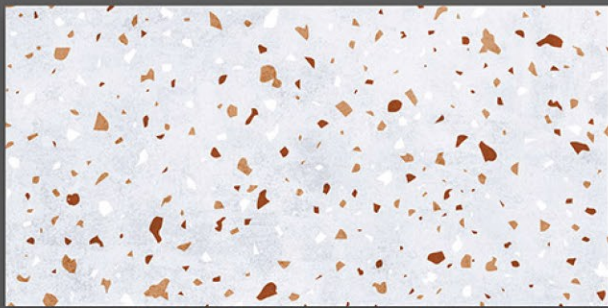
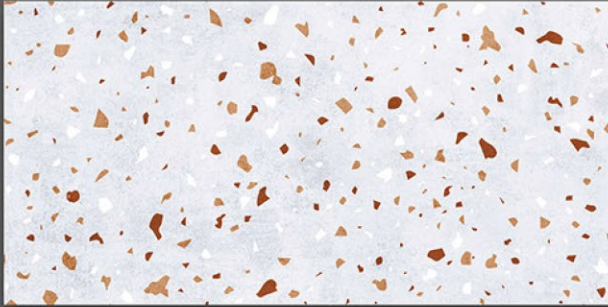


3086_LT-(Random)
3086_HL1-(Punch)
3086_DK-(Random)



NOVAC
CERAMIC
Committed to Quality

GLOSSY SERIES



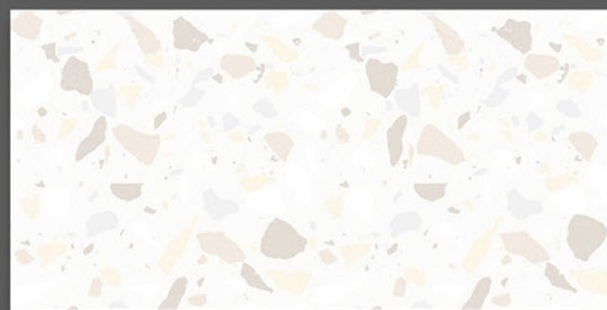
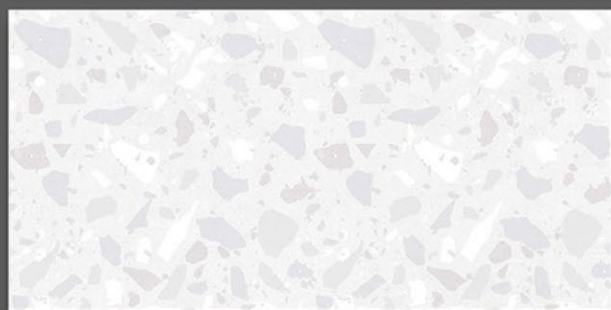
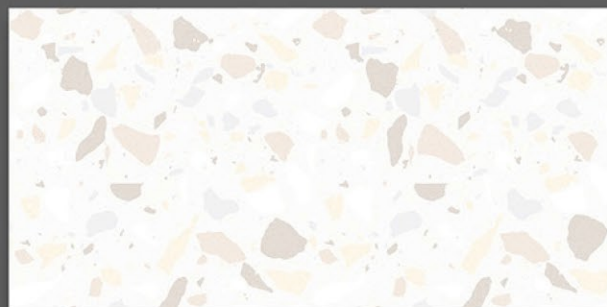
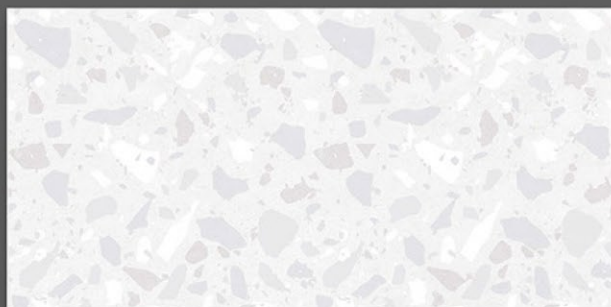
4001_LT-(Continue/Plain)
4001_DK-(Continue/Plain)

4002_LT-(Continue/Plain)
4002_DK-(Continue/Plain)



NOVAC
CERAMIC
Committed to Quality

GLOSSY SERIES



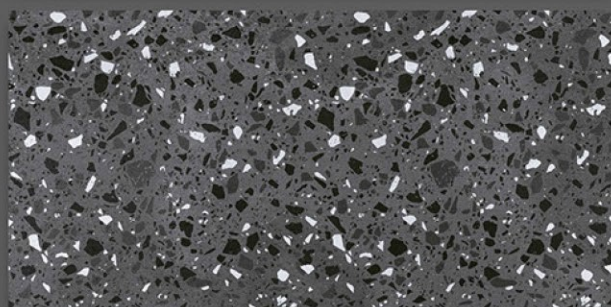
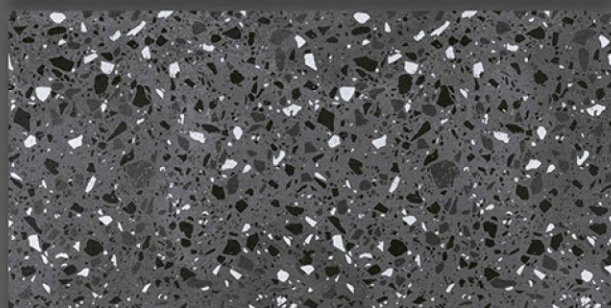
4003_LT-(Continue/Plain)
4003_DK-(Continue/Plain)

4004_LT-(Continue/Plain)
4004_DK-(Continue/Plain)

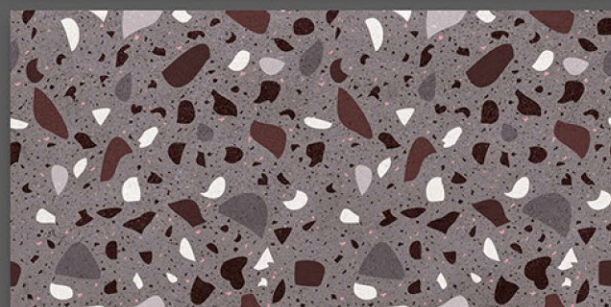
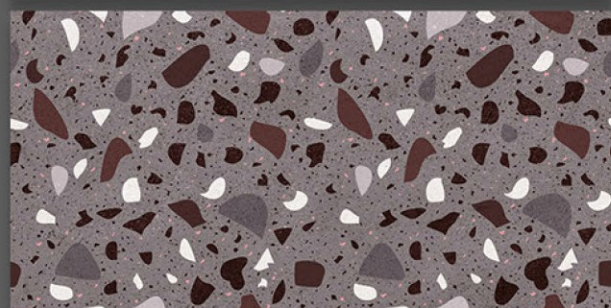
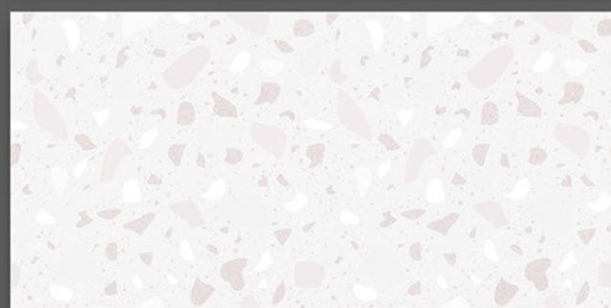
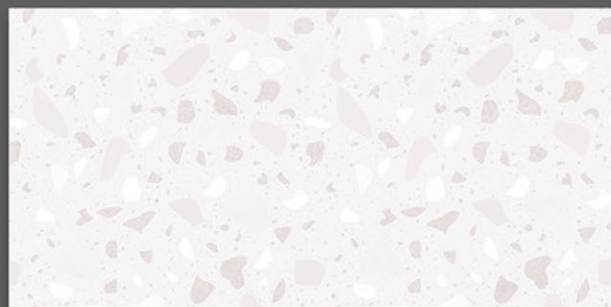


NOVAC
CERAMIC
Committed to Quality

GLOSSY SERIES



4005_LT-(Continue/Plain)
4005_DK-(Continue/Plain)

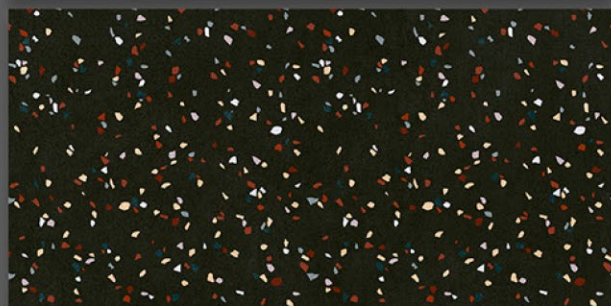
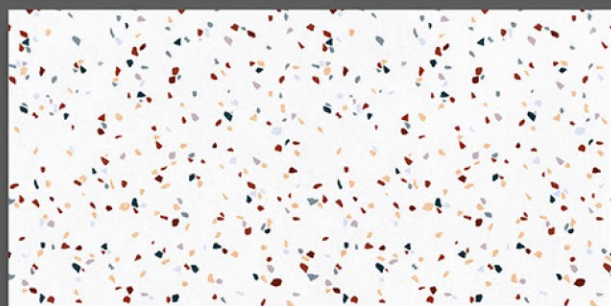
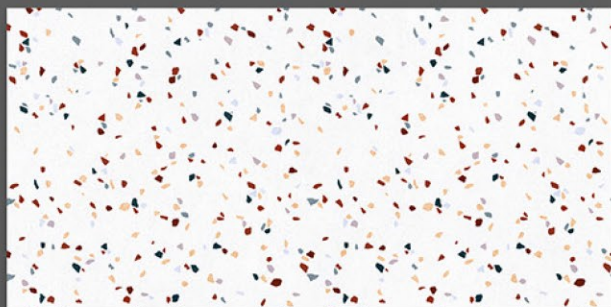


4006_LT-(Continue/Plain)
4006_DK-(Continue/Plain)

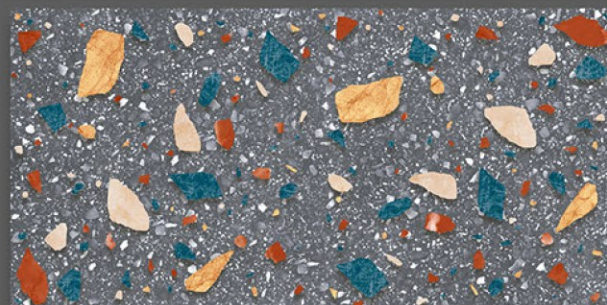
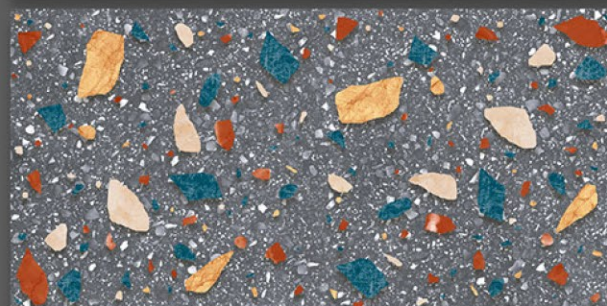
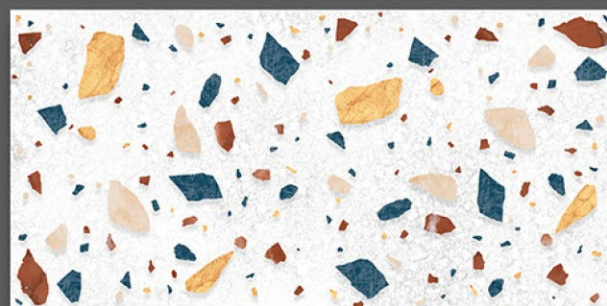
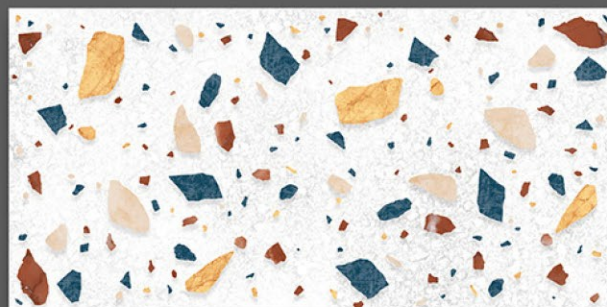


NOVAC
CERAMIC
Committed to Quality

GLOSSY SERIES



4007_LT-(Continue/Plain)
4007_DK-(Continue/Plain)

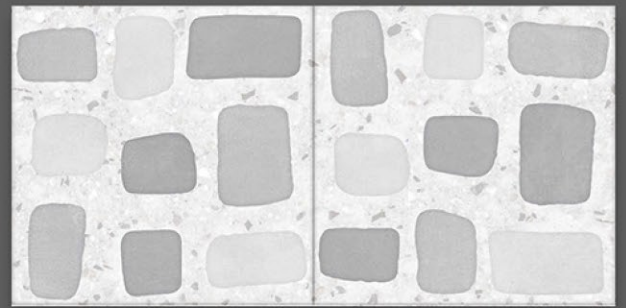
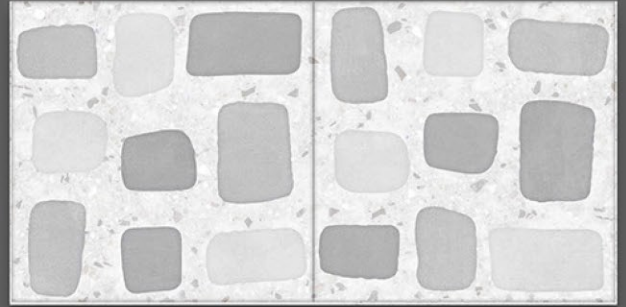
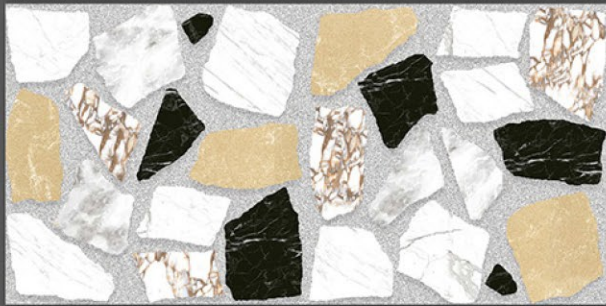


4008_LT-(Continue/Plain)
4008_DK-(Continue/Plain)



NOVAC
CERAMIC
Committed to Quality

GLOSSY SERIES



4009_LT-(Continue/Plain)
4009_DK-(Continue/Plain)

4011_LT-(Continue/Plain)
4011_DK-(Continue/Plain)

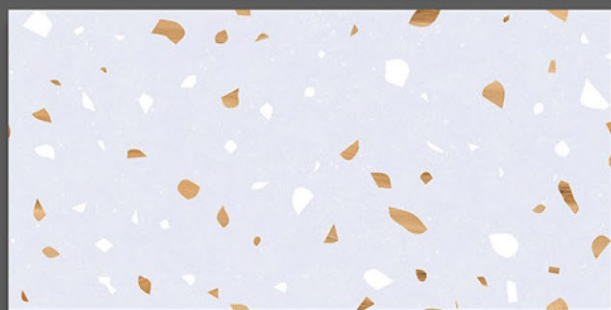
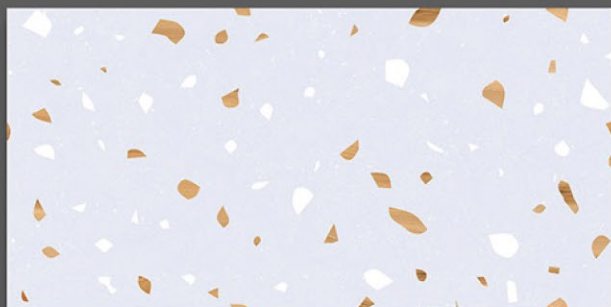


NOVAC

CERAMIC

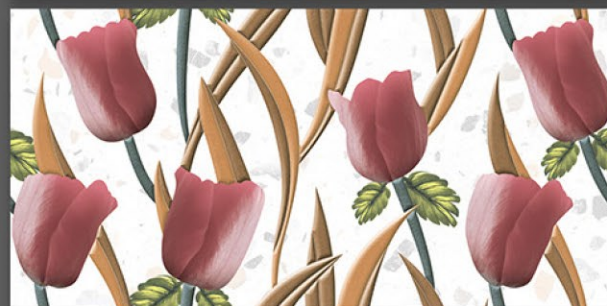
Committed to Quality

GLOSSY SERIES



4013_LT-(Continue/Plain)

4013_DK-(Continue/Plain)

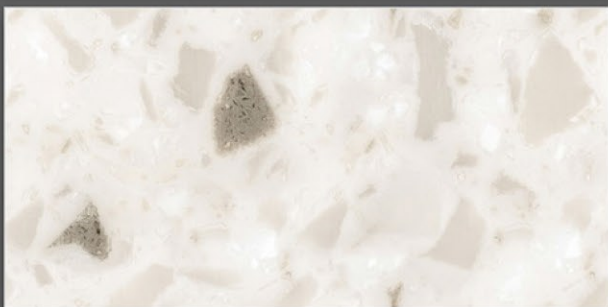


4015_LT-(Continue/Plain)

4015_HL1-(Continue/Plain)

4015_DK-(Continue/Plain)

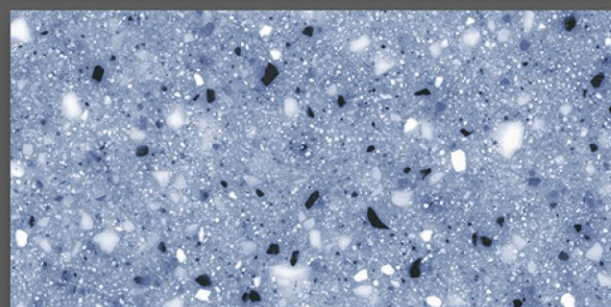
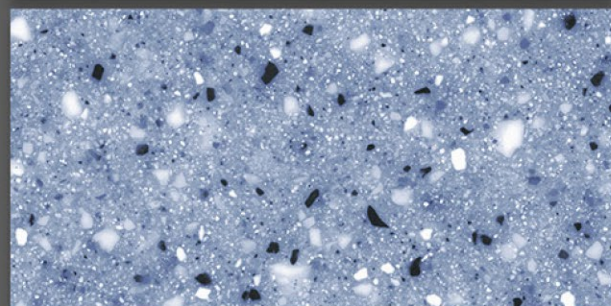
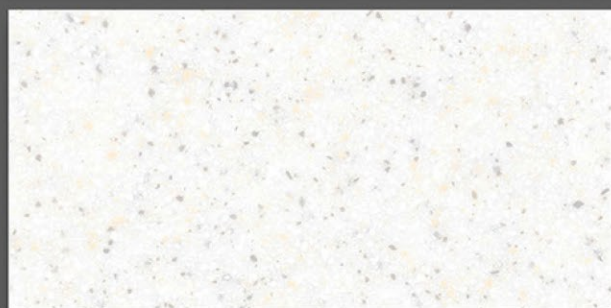
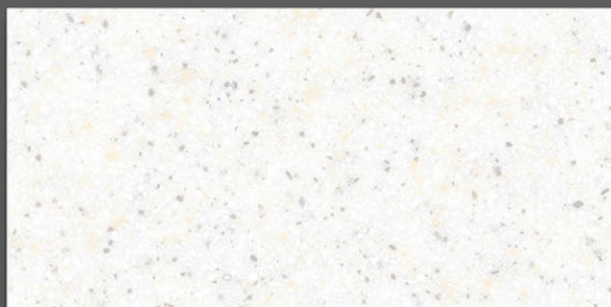
GLOSSY SERIES



4016_LT-(Continue/Random/Plain)

4016_LT-(Continue/Random/Plain)

GLOSSY SERIES



4018_LT-(Continue/Plain)
4018_DK-(Continue/Plain)

4019_LT-(Continue/Plain)
4019_DK-(Continue/Plain)



NOVAC CERAMIC LLP

At: Lalpar, Real Plaza - 1, Near Omkar Petroleum,
8-A, National Highway, Morbi - 363 642.

Cell: +91 97251 20510

www.novacceramic.com | info@novacceramic.com