



NOVAC

C E R A M I C

Committed to Quality



GLOSSY V2

300
X_{mm}
600

DIGITAL WALL TILES

GLOSSY SERIES



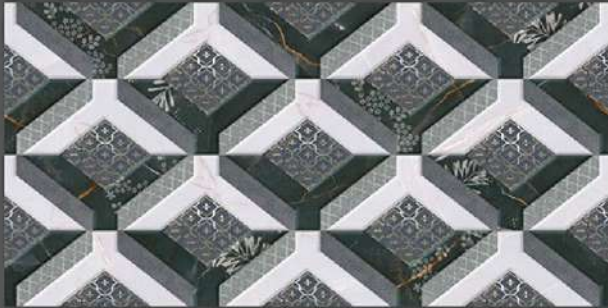
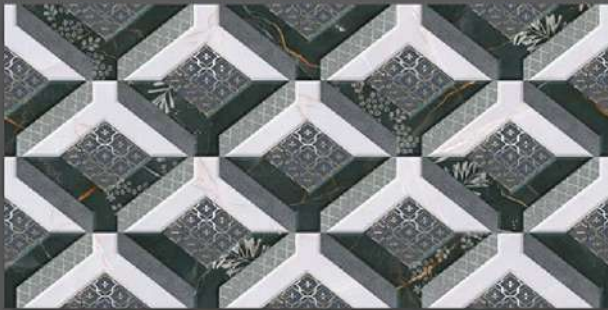
2001_LT-(Random)
2001_HL2-(Punch)
2001_DK-(Random)

2001_LT-(Random)
2001_HL3-(Punch)
2001_DK-(Random)



NOVAC
CERAMIC
Committed to Quality

GLOSSY SERIES



2001_LT-(Random)
2001_HL4-(Punch)
2001_DK-(Random)

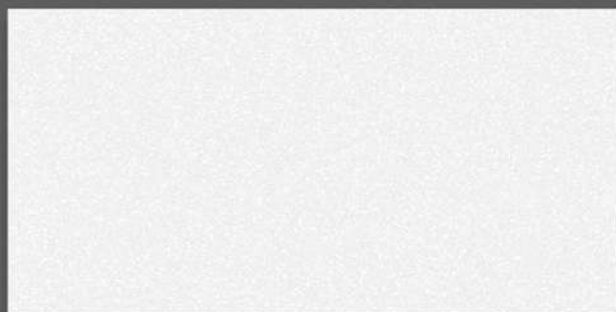


2002_LT-(Plain)
2002_HL1-(Punch)
2002_DK-(Plain)



NOVAC
CERAMIC
Committed to Quality

GLOSSY SERIES



2002_LT-(Plain)
2002_HL2-(Punch)
2002_DK-(Plain)

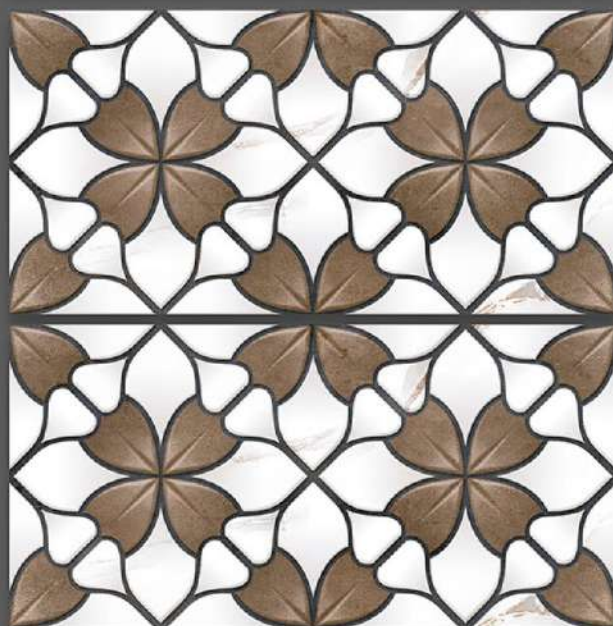
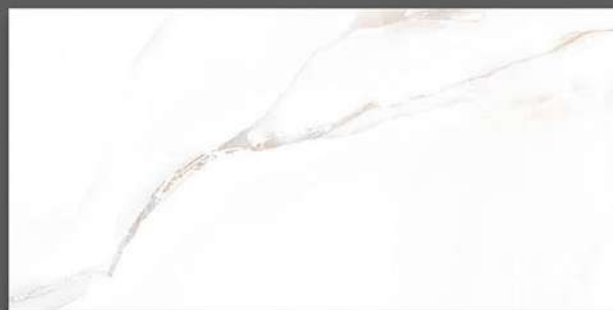


2003_LT-(Random)
2003_HL1-(Punch)
2003_DK-(Random)



NOVAC
CERAMIC
Committed to Quality

GLOSSY SERIES



2003_LT-(Random)
2003_HL2-(Punch)
2003_DK-(Random)

2003_LT-(Random)
2003_HL3-(Punch)
2003_DK-(Random)

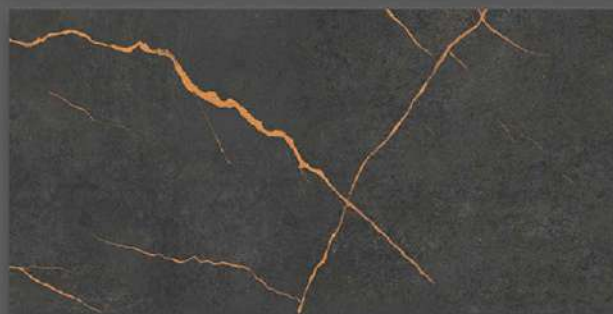
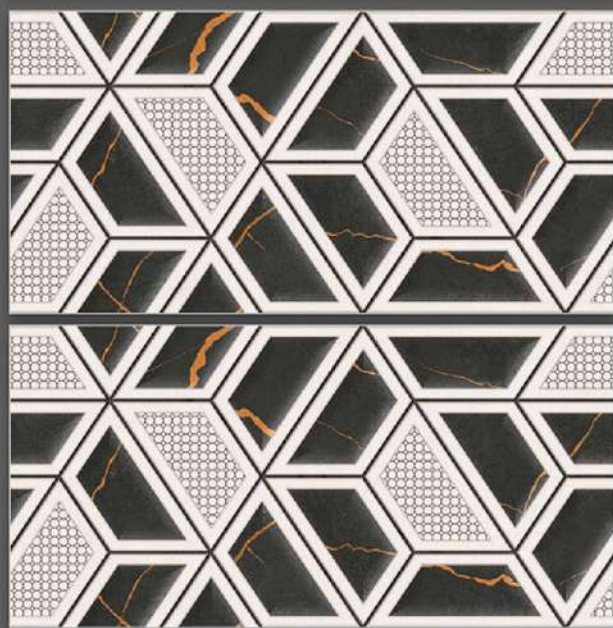
GLOSSY SERIES



NOVAC

CERAMIC

Committed to Quality



2004_LT-(Random)
2004_HL2-(Punch)
2004_DK-(Random)

2004_LT-(Random)
2004_HL3-(Punch)
2004_DK-(Random)

GLOSSY SERIES



NOVAC
CERAMIC
Committed to Quality



2006_LT-(Plain)
2006_HL1-(Punch)
2006_DK-(Plain)



2006_LT-(Plain)
2006_HL2-(Punch)
2006_DK-(Plain)



NOVAC
CERAMIC
Committed to Quality

GLOSSY SERIES



2008_LT-(Random)
2008_HL1-(Punch)
2008_DK-(Random)

2008_LT-(Random)
2008_HL3-(Punch)
2008_DK-(Random)



NOVAC
CERAMIC
Committed to Quality

GLOSSY SERIES



2009_LT-(Random)
2009_HL1-(Punch)
2009_DK-(Random)



2009_LT-(Random)
2009_HL2-(Punch)
2009_DK-(Random)

GLOSSY SERIES



2010_LT-(Plain)
2010_HL2-(Punch)
2010_DK-(Plain)

2010_LT-(Plain)
2010_HL4-(Punch)
2010_DK-(Plain)

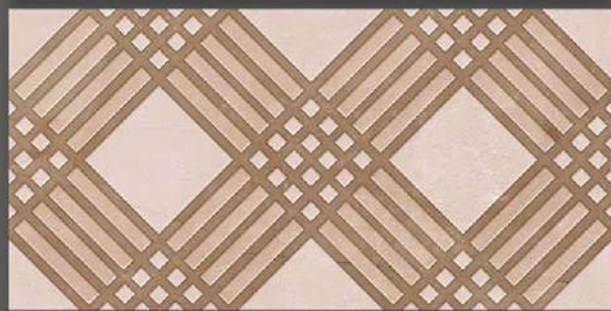
GLOSSY SERIES



NOVAC

CERAMIC

Committed to Quality



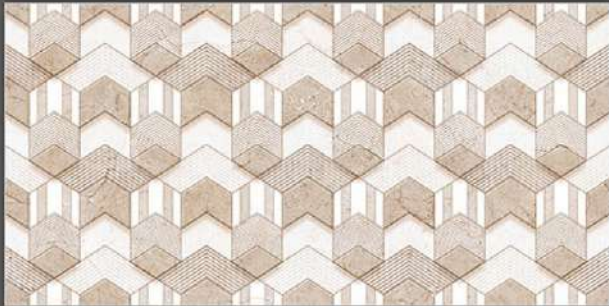
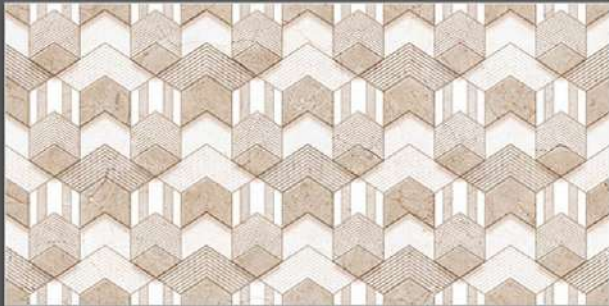
2013_LT-(Random)
2013_HL1-(Punch)
2013_DK-(Random)

2013_LT-(Random)
2013_HL2-(Punch)
2013_DK-(Random)



NOVAC
CERAMIC
Committed to Quality

GLOSSY SERIES



2017_LT-(Random)
2017_HL1-(Punch)
2017_LT-(Random)

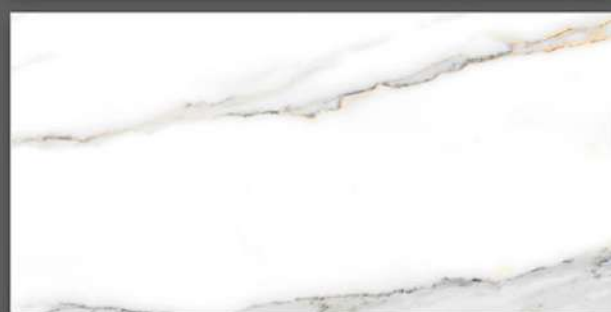
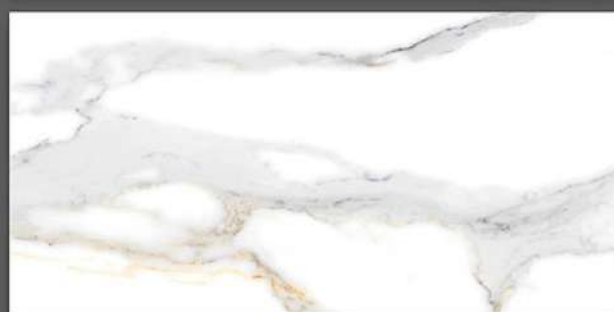
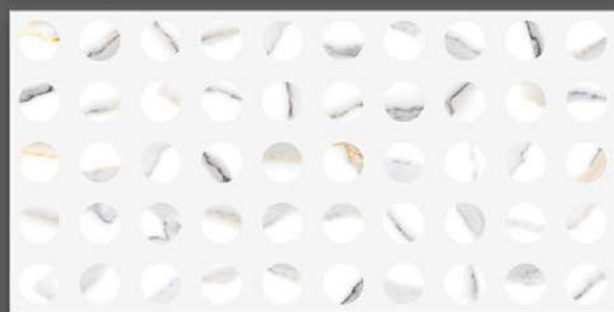
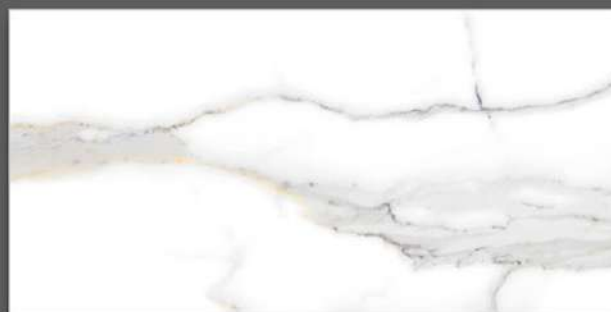


2017_LT-(Random)
2017_HL2-(Punch)
2017_LT-(Random)



NOVAC
CERAMIC
Committed to Quality

GLOSSY SERIES



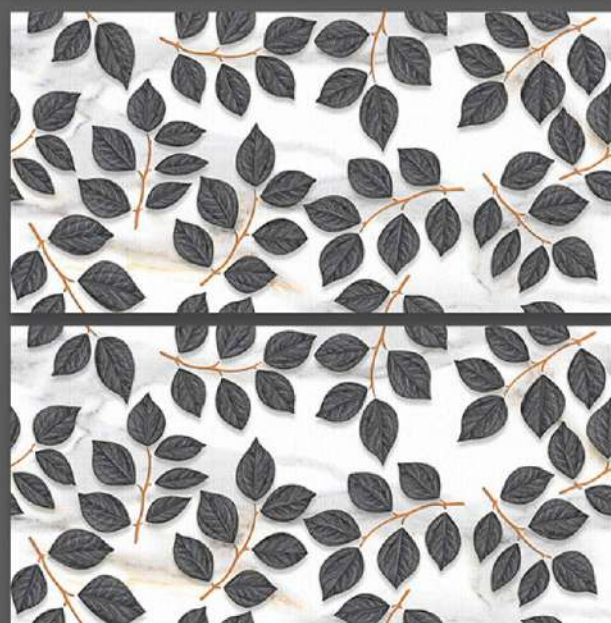
2022_LT-(Random)
2022_HL1-(Punch)
2022_LT-(Random)

2022_LT-(Random)
2022_HL2-(Punch)
2022_LT-(Random)



NOVAC
CERAMIC
Committed to Quality

GLOSSY SERIES



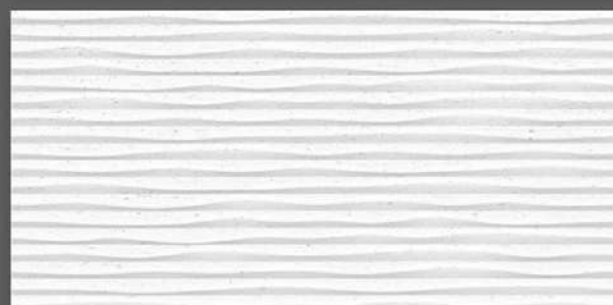
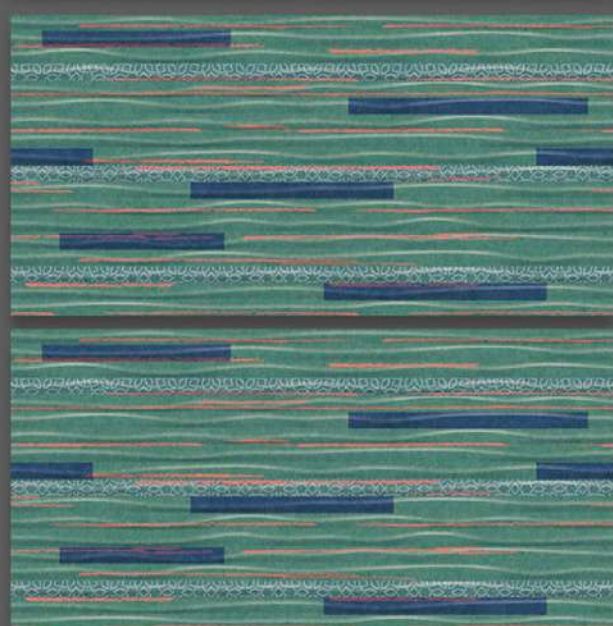
2022_LT-(Random)
2022_HL3-(Punch)
2022_LT-(Random)

2022_LT-(Random)
2022_HL4-(Punch)
2022_LT-(Random)

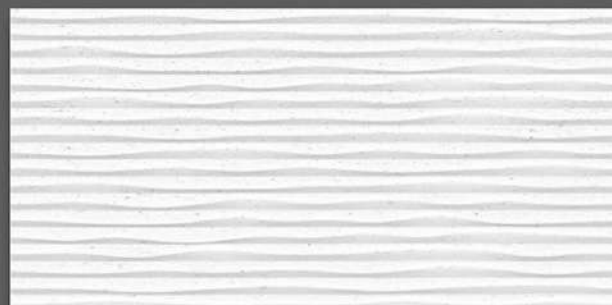


NOVAC
CERAMIC
Committed to Quality

GLOSSY SERIES



2023_LT-(Punch)
2023_HL1-(Punch)
2023_LT-(Punch)

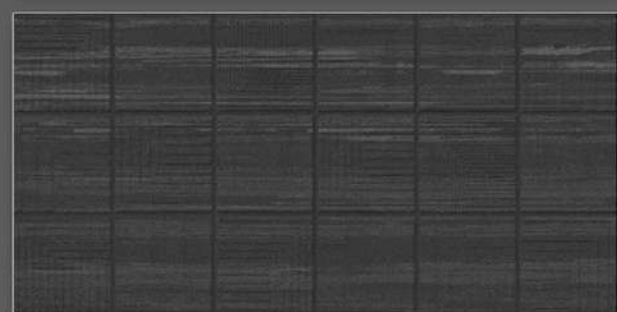
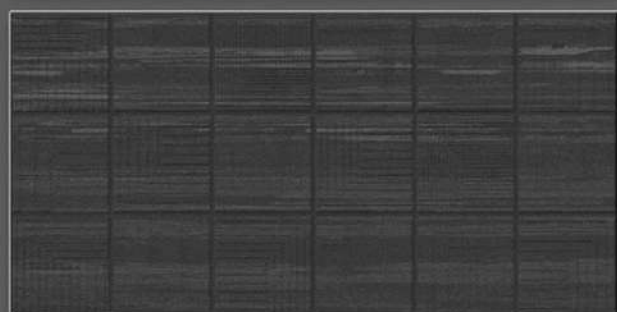
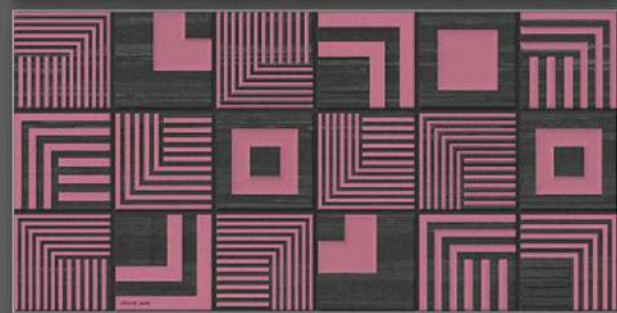
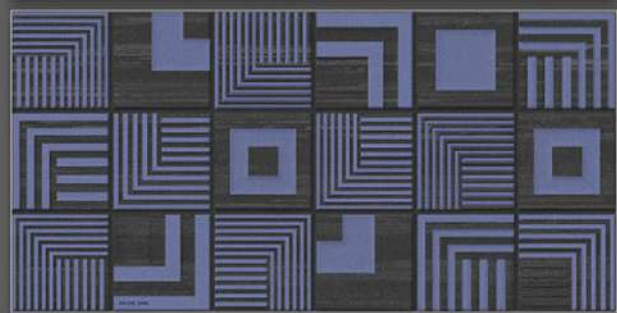
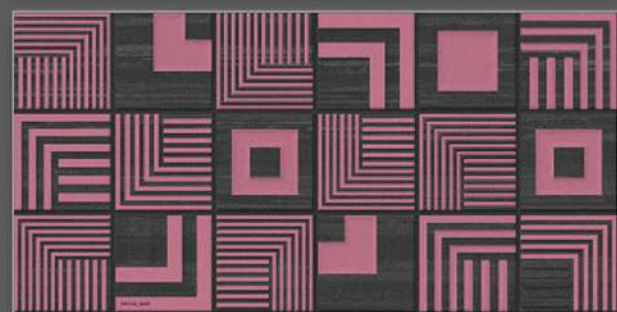
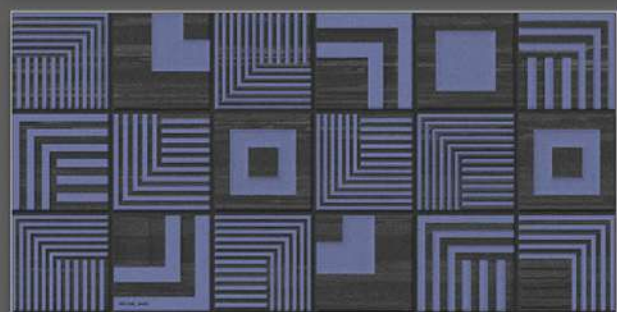
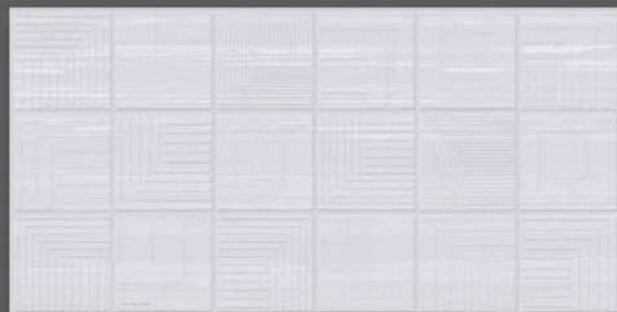
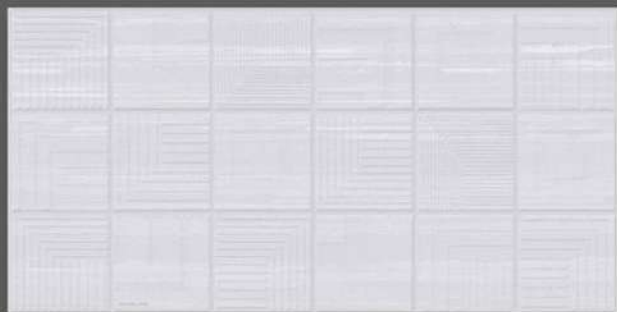


2023_LT-(Punch)
2023_HL1-(Punch)
2023_LT-(Punch)



NOVAC
CERAMIC
Committed to Quality

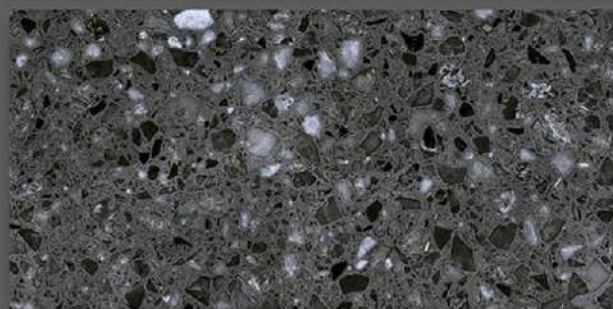
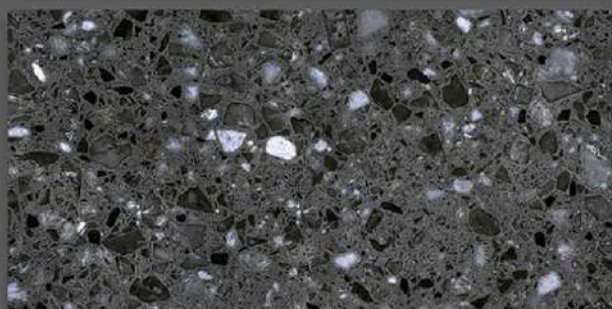
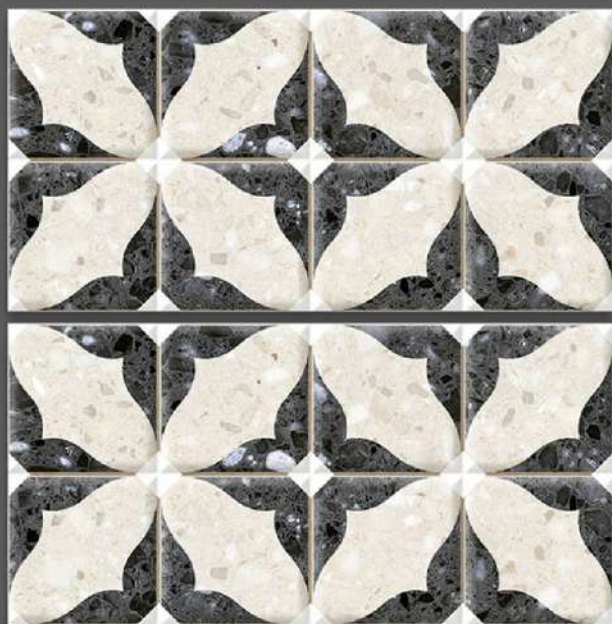
GLOSSY SERIES



2024_LT-(Punch)
2024_HL1-(Punch)
2024_DK-(Punch)

2024_LT-(Punch)
2024_HL2-(Punch)
2024_DK-(Punch)

GLOSSY SERIES



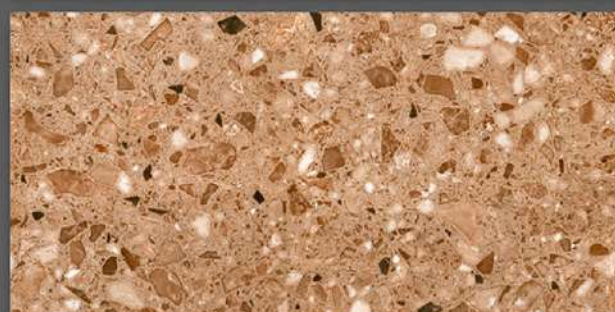
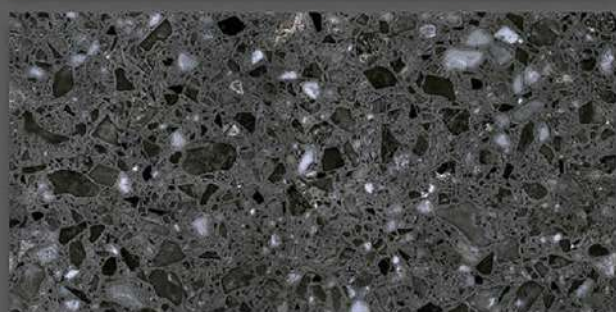
2025_LT-(Random)
2025_HL1-(Punch)
2025_DK-(Random)

2025_LT-(Random)
2025_HL2-(Punch)
2025_DK-(Random)



NOVAC
CERAMIC
Committed to Quality

GLOSSY SERIES



2025_LT-(Random)
2025_HL3-(Punch)
2025_DK-(Random)

2025_LT-(Random)
2026_HL1-(Punch)
2026_DK-(Random)

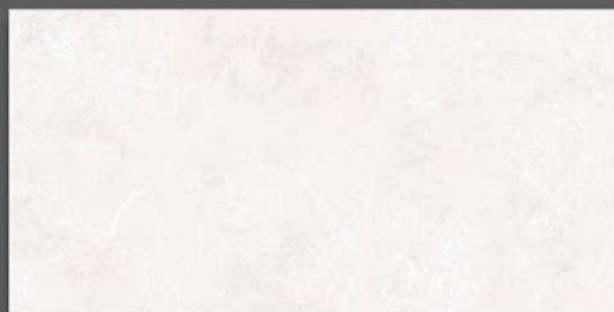
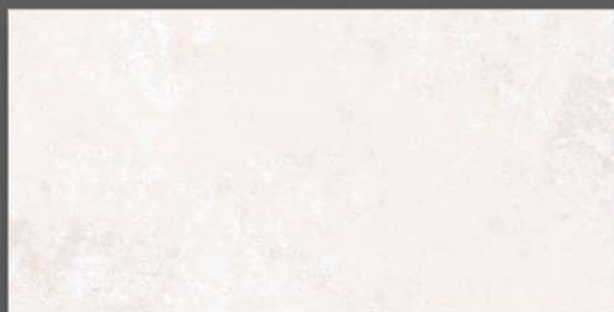
GLOSSY SERIES



2025_LT-(Random)
2027_HL1-(Punch)
2027_DK-(Random)

2025_LT-(Random)
2028_HL1-(Punch)
2028_DK-(Random)

GLOSSY SERIES



2031_LT-(Random)
2031_HL1-(Punch)
2031_DK-(Random)

2031_LT-(Random)
2031_HL2-(Punch)
2031_DK-(Random)

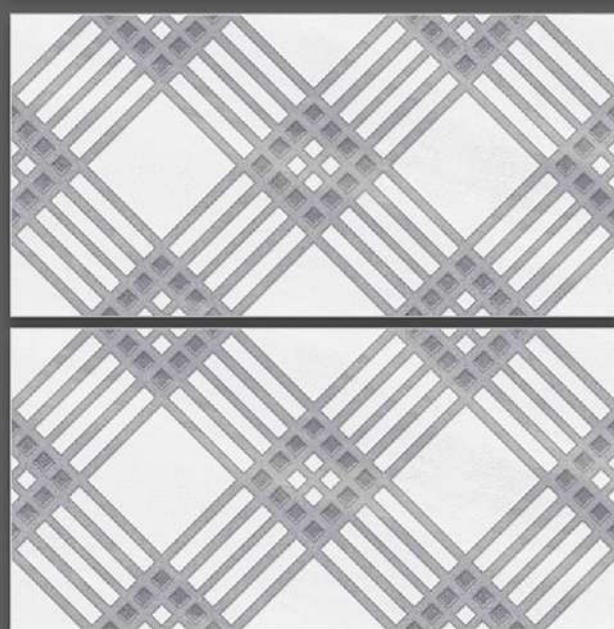
GLOSSY SERIES



NOVAC
CERAMIC
Committed to Quality



2033_LT-(Plain)
2033_HL1-(Punch)
2033_DK-(Plain)

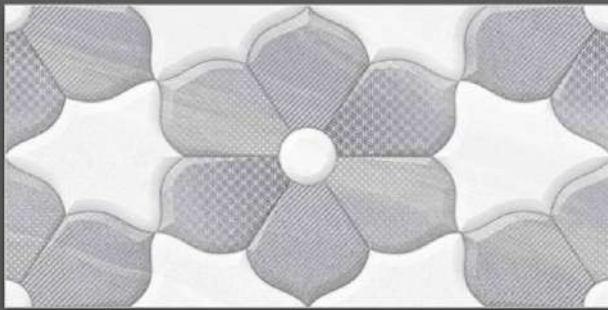


2033_LT-(Plain)
2033_HL2-(Punch)
2033_DK-(Plain)



NOVAC
CERAMIC
Committed to Quality

GLOSSY SERIES



2033_LT-(Plain)
2033_HL3-(Punch)
2033_DK-(Plain)



2036_LT-(Random)
2036_HL3-(Punch)
2036_DK-(Random)



NOVAC
CERAMIC
Committed to Quality

GLOSSY SERIES



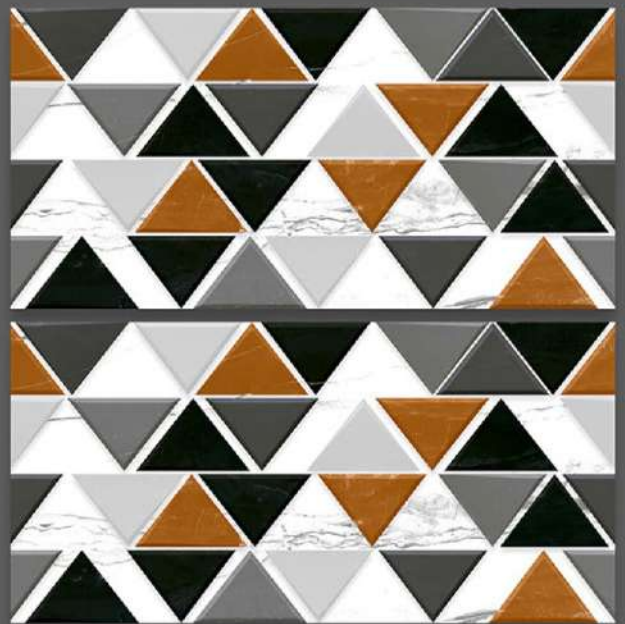
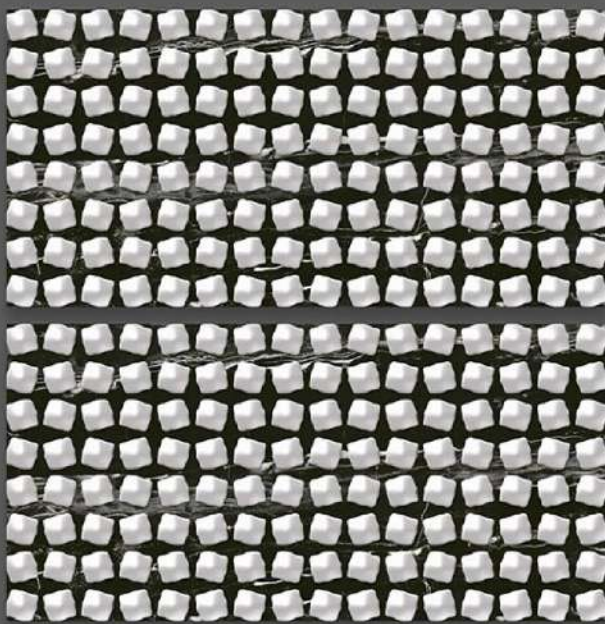
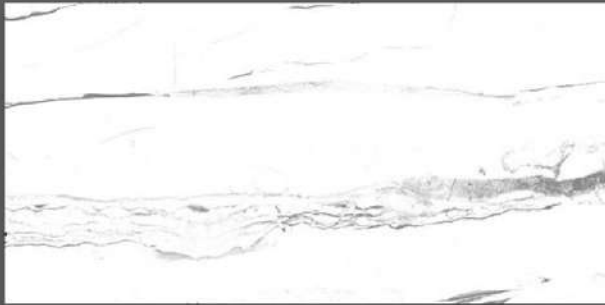
2036_LT-(Random)
2036_HL4-(Punch)
2036_DK-(Random)

2036_LT-(Random)
2036_HL5-(Punch)
2036_DK-(Random)



NOVAC
CERAMIC
Committed to Quality

GLOSSY SERIES



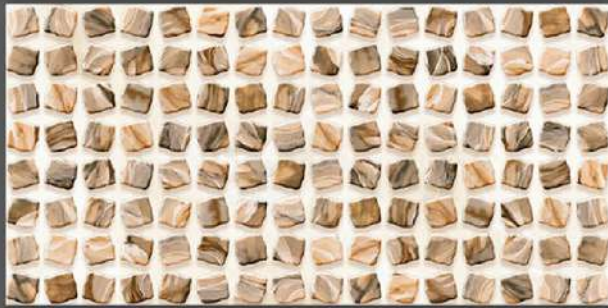
2037_LT-(Random)
2037_HL1-(Punch)
2037_DK-(Random)

2037_LT-(Random)
2037_HL3-(Punch)
2037_DK-(Random)



NOVAC
CERAMIC
Committed to Quality

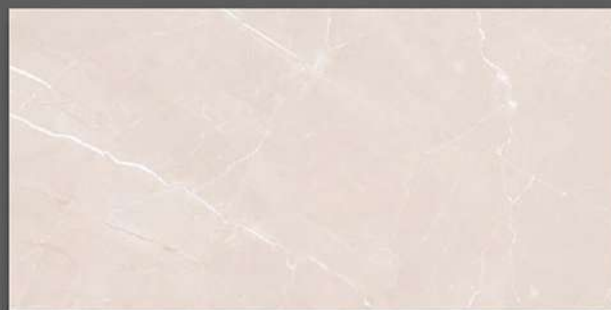
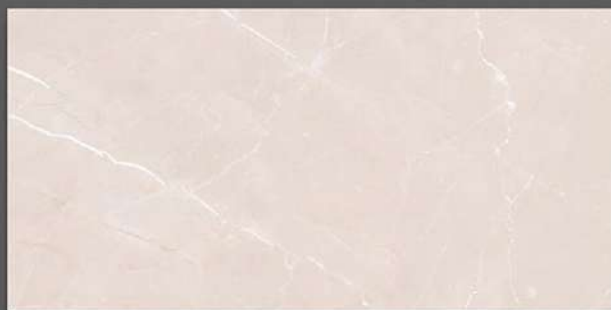
GLOSSY SERIES



2039_LT-(Random)
2039_HL1-(Punch)
2039_LT-(Random)

2039_LT-(Random)
2039_HL2-(Punch)
2039_LT-(Random)

GLOSSY SERIES



2040_LT-(Random)
2040_HL1-(Punch)
2040_DK-(Random)

2040_LT-(Random)
2040_HL1-(Punch)
2040_DK-(Random)

GLOSSY SERIES



NOVAC
CERAMIC
Committed to Quality



2042_LT-(Random)
2042_HL1-(Punch)
2042_DK-(Random)

2042_LT-(Random)
2042_HL3-(Punch)
2042_DK-(Random)



NOVAC
CERAMIC
Committed to Quality

GLOSSY SERIES



2043_LT-(Random)
2043_HL1-(Punch)
2043_DK-(Random)

2043_LT-(Random)
2043_HL2-(Punch)
2043_DK-(Random)

GLOSSY SERIES



NOVAC
CERAMIC
Committed to Quality



2046_LT-(Random)
2046_HL1-(Punch)
2046_DK-(Random)



2046_LT-(Random)
2046_HL4-(Punch)
2046_DK-(Random)



NOVAC
CERAMIC
Committed to Quality

GLOSSY SERIES

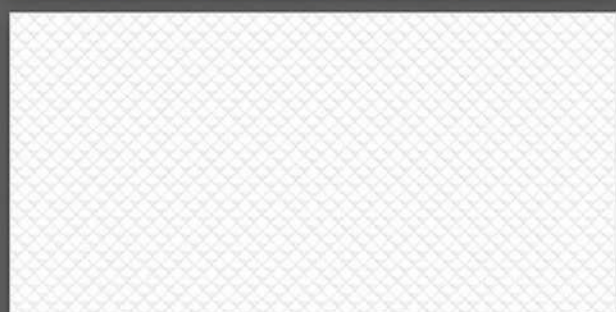
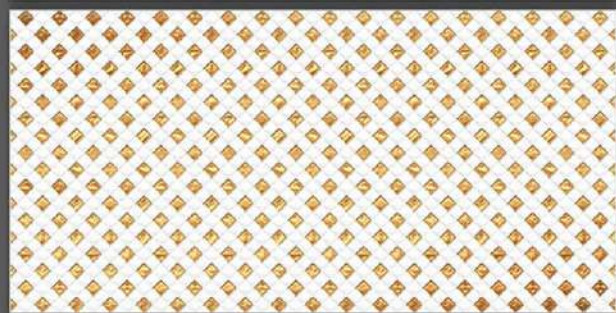
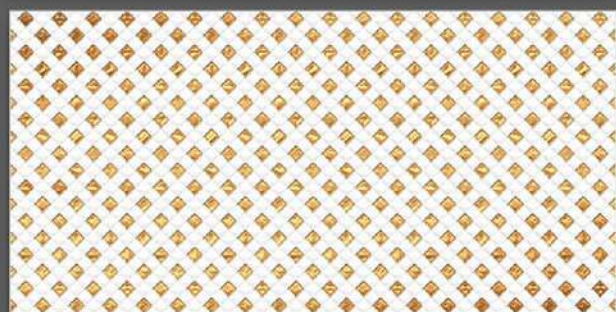


2053_LT-(Plain-White)
2053_HL1-(Punch)
2053_LT-(Plain-White)

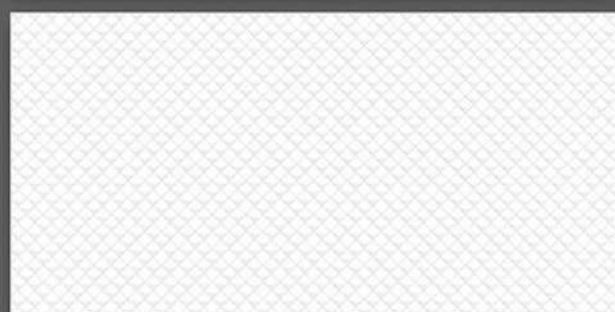
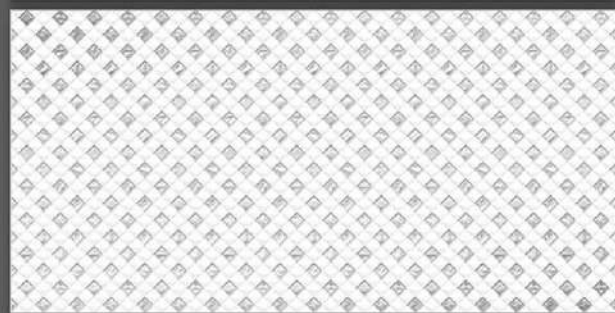


2053_LT-(Plain-White)
2053_HL2-(Punch)
2053_LT-(Plain-White)

GLOSSY SERIES

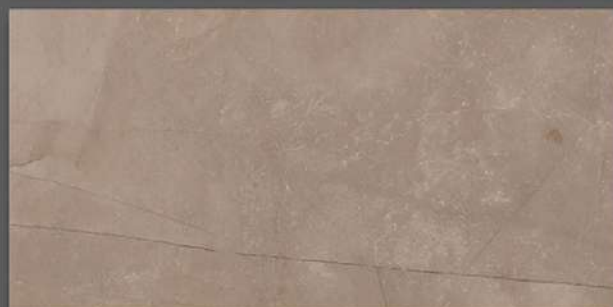
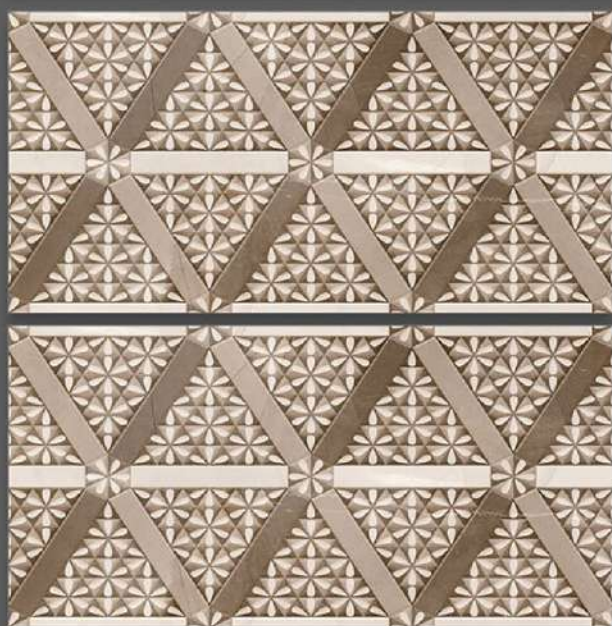
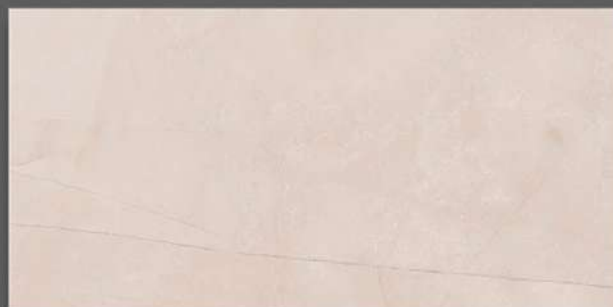


2054_LT-(Punch)
2054_HL1-(Punch)
2054_LT-(Punch)



2054_LT-(Punch)
2054_HL2-(Punch)
2054_LT-(Punch)

GLOSSY SERIES



2055_LT-(Random)
2055_HL1-(Punch)
2055_DK-(Random)

2055_LT-(Random)
2055_HL2-(Punch)
2055_DK-(Random)

GLOSSY SERIES



NOVAC
CERAMIC
Committed to Quality



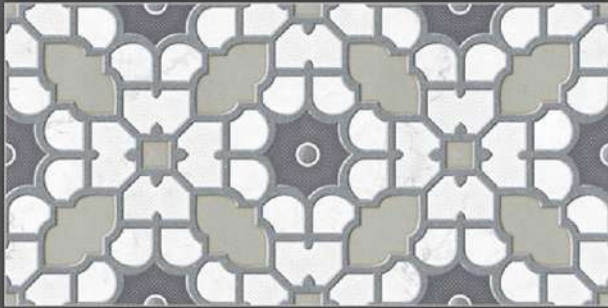
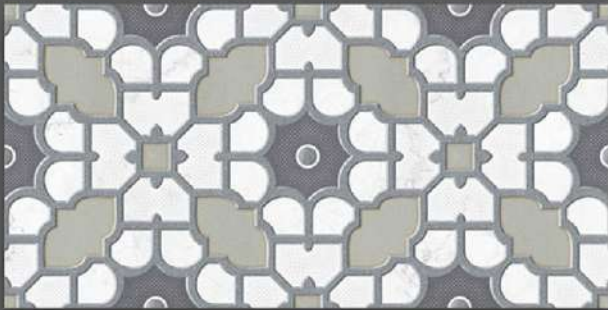
2057_LT-(Punch)
2057_HL2-(Punch)
2057_DK-(Punch)

2057_LT-(Punch)
2057_HL2-(Punch)
2057_DK-(Punch)

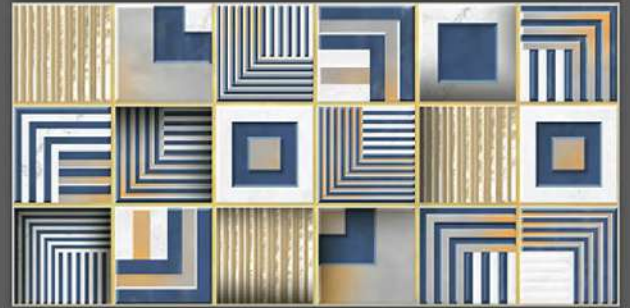


NOVAC
CERAMIC
Committed to Quality

GLOSSY SERIES



2059_LT-(Random)
2059_HL1-(Punch)
2059_LT-(Random)

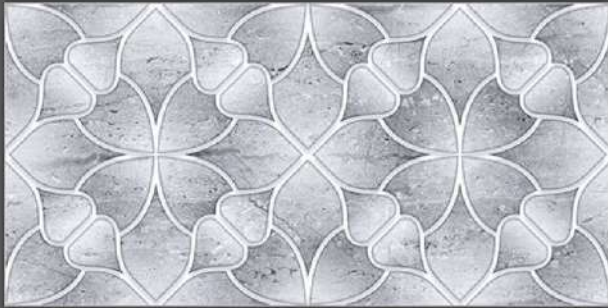
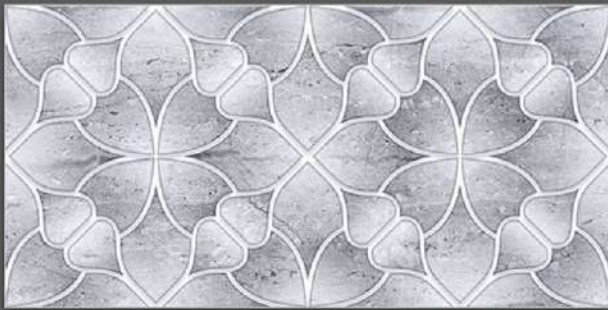


2059_LT-(Random)
2059_HL2-(Punch)
2059_LT-(Random)



NOVAC
CERAMIC
Committed to Quality

GLOSSY SERIES



2063_LT-(Random)
2063_HL1-(Punch)
2063_DK-(Random)

2063_LT-(Random)
2063_HL2-(Punch)
2063_DK-(Random)



NOVAC
CERAMIC
Committed to Quality

GLOSSY SERIES



2064_LT-(Random)
2064_HL1-(Punch)
2064_DK-(Random)

2064_LT-(Random)
2064_HL2-(Punch)
2064_DK-(Random)

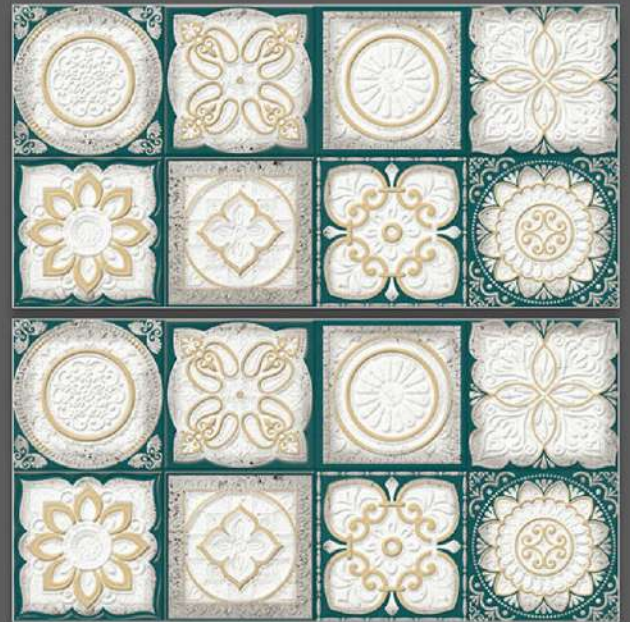


NOVAC
CERAMIC
Committed to Quality

GLOSSY SERIES



2067_LT-(Random)
2067_HL1-(Punch)
2067_DK-(Random)

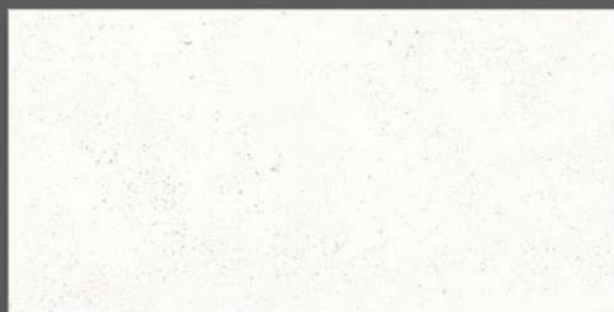


2067_LT-(Random)
2067_HL2-(Punch)
2067_DK-(Random)

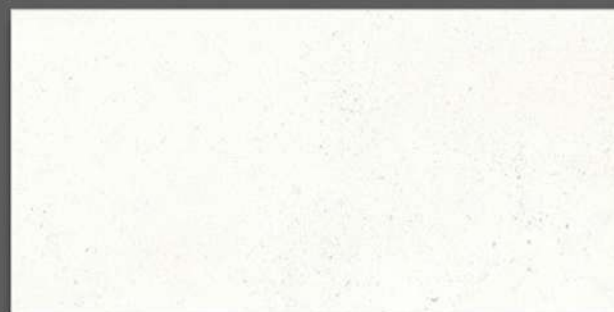


NOVAC
CERAMIC
Committed to Quality

GLOSSY SERIES



2067_LT-(Random)
2067_HL3-(Punch)
2067_DK-(Random)



2067_LT-(Random)
2067_HL4-(Punch)
2067_DK-(Random)

GLOSSY SERIES



NOVAC

CERAMIC

Committed to Quality



2068_LT-(Random)
2068_HL1-(Punch)
2068_DK-(Random)

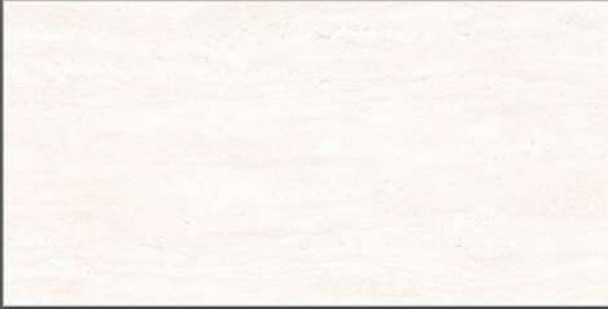


2068_LT-(Random)
2068_HL2-(Punch)
2068_DK-(Random)



NOVAC
CERAMIC
Committed to Quality

GLOSSY SERIES



2068_LT-(Random)
2068_HL3-(Punch)
2068_DK-(Random)

2068_LT-(Random)
2068_HL3-(Punch)
2068_DK-(Random)



NOVAC
CERAMIC
Committed to Quality

GLOSSY SERIES



2069_LT-(Random)
2069_HL1-(Punch)
2069_LT-(Random)

2069_LT-(Random)
2069_HL2-(Punch)
2069_LT-(Random)



NOVAC
CERAMIC
Committed to Quality

GLOSSY SERIES



2071_LT-(Random)
2071_HL2-(Punch)
2071_DK-(Random)

2071_LT-(Random)
2071_HL3-(Punch)
2071_DK-(Random)



NOVAC
CERAMIC
Committed to Quality

GLOSSY SERIES



2072_LT-(Random)
2072_HL1-(Punch)
2072_DK-(Random)

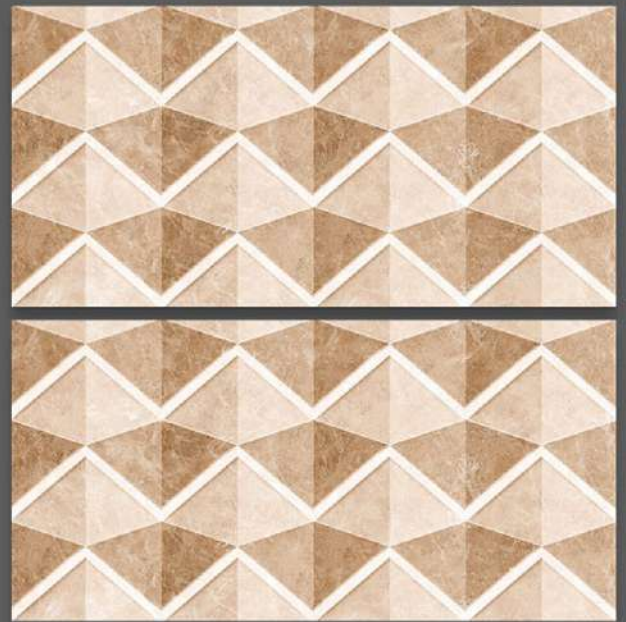
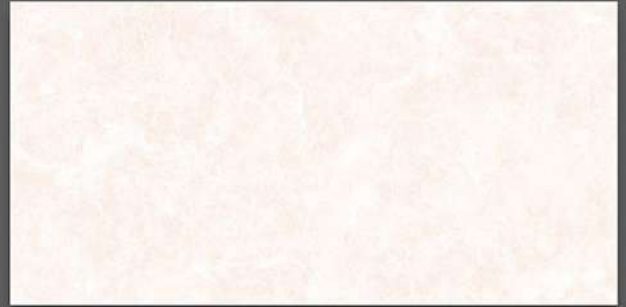
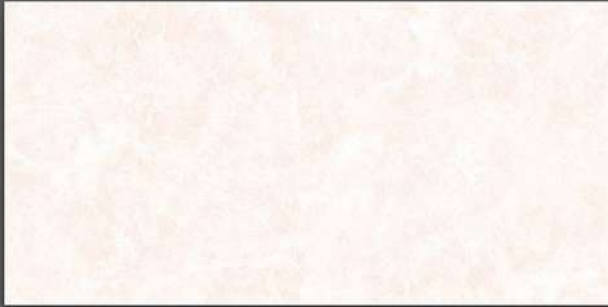


2072_LT-(Random)
2072_HL2-(Punch)
2072_DK-(Random)



NOVAC
CERAMIC
Committed to Quality

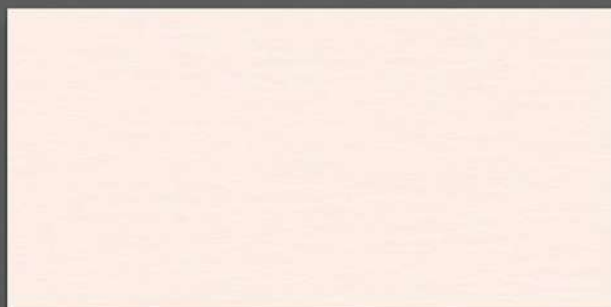
GLOSSY SERIES



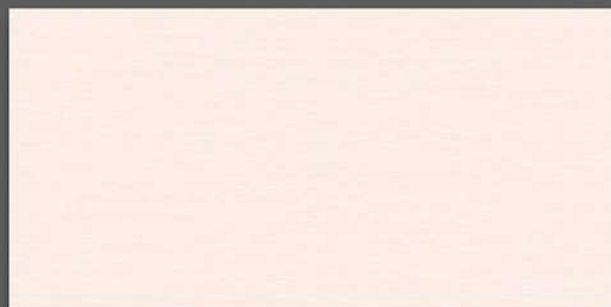
2074_LT-(Plain)
2074_HL1-(Punch)
2074_DK-(Plain)

2074_LT-(Plain)
2074_HL2-(Punch)
2074_DK-(Plain)

GLOSSY SERIES



2076_LT-(Plain)
2076_HL1-(Punch)
2076_DK-(Plain)



2076_LT-(Plain)
2076_HL2-(Punch)
2076_DK-(Plain)

GLOSSY SERIES



NOVAC
CERAMIC
Committed to Quality



2077_LT-(Plain)
2077_HL1-(Punch)
2077_LT-(Plain)

2077_LT-(Plain)
2077_HL2-(Plain)
2077_LT-(Plain)

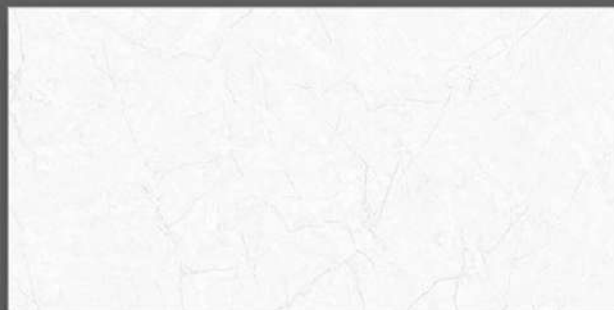
GLOSSY SERIES



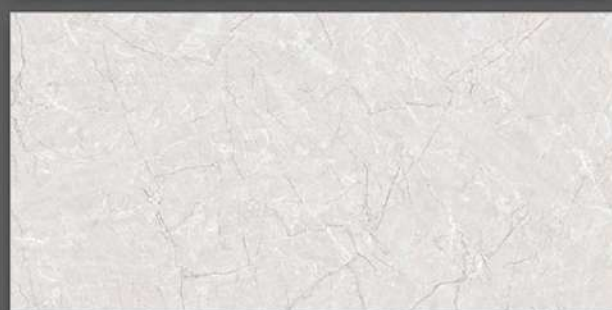
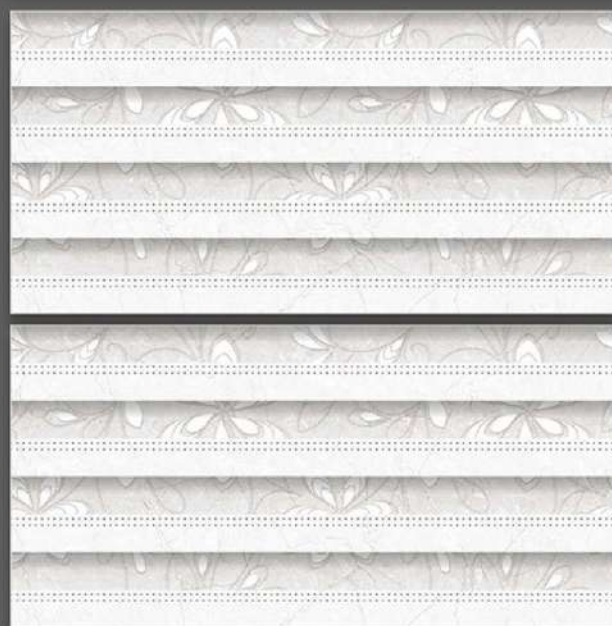
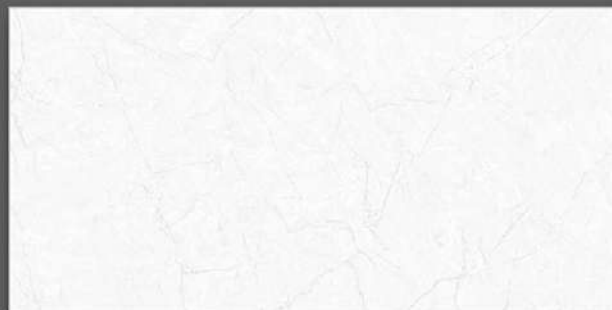
NOVAC

CERAMIC

Committed to Quality



2084_LT-(Plain)
2084_HL1-(Punch)
2084_DK-(Plain)



2084_LT-(Plain)
2084_HL2-(Punch)
2084_DK-(Plain)



NOVAC
CERAMIC
Committed to Quality

GLOSSY SERIES



2085_LT-(Plain)
2085_HL1-(Punch)
2085_DK-(Plain)



2085_LT-(Plain)
2085_HL2-(Punch)
2085_DK-(Plain)

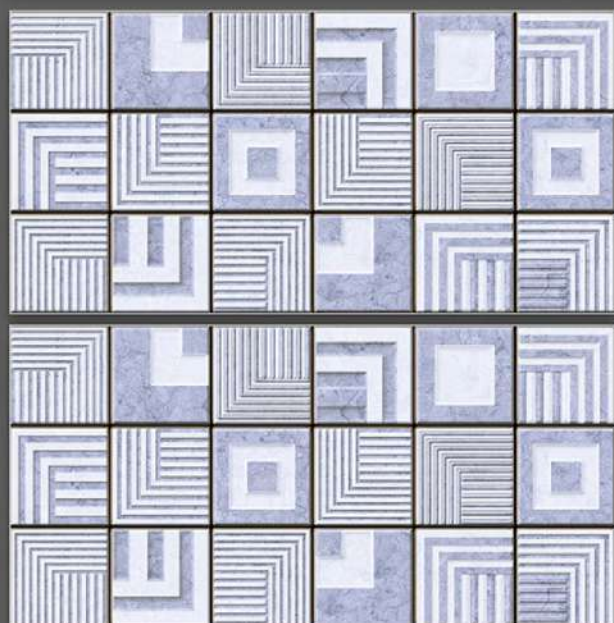
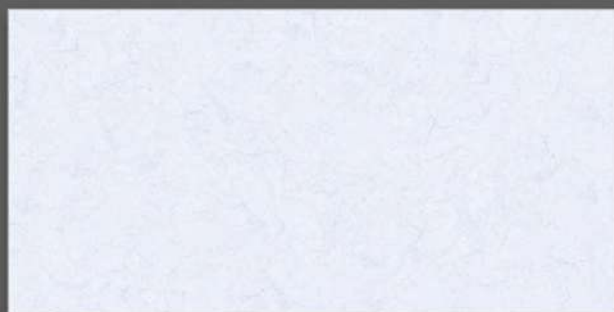


NOVAC

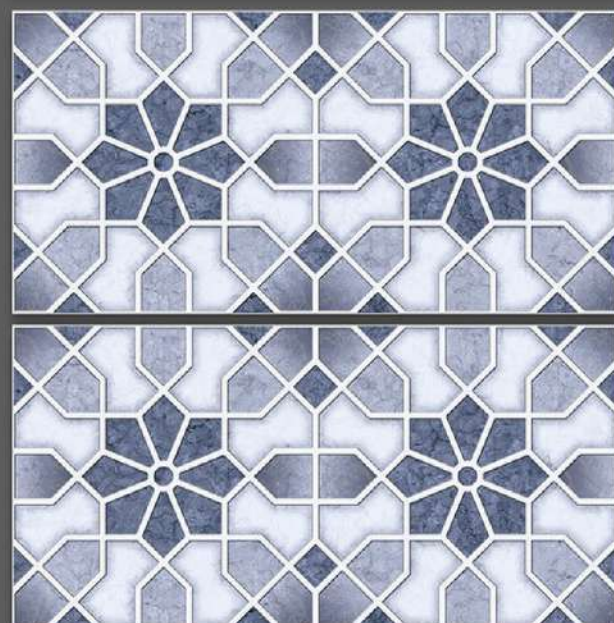
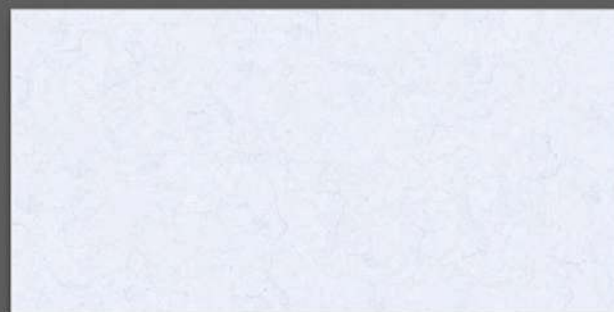
CERAMIC

Committed to Quality

GLOSSY SERIES



2088_LT-(Plain)
2088_HL2-(Punch)
2088_DK-(Plain)



2088_LT-(Plain)
2088_HL3-(Punch)
2088_DK-(Plain)



NOVAC
CERAMIC
Committed to Quality

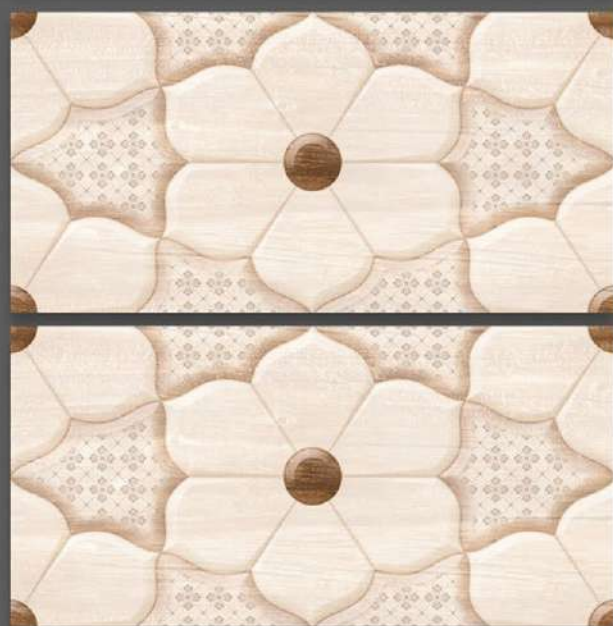
GLOSSY SERIES



2092_LT-(Random)
2092_HL1-(Punch)
2092_DK-(Random)

2092_LT-(Random)
2092_HL2-(Punch)
2092_DK-(Random)

GLOSSY SERIES



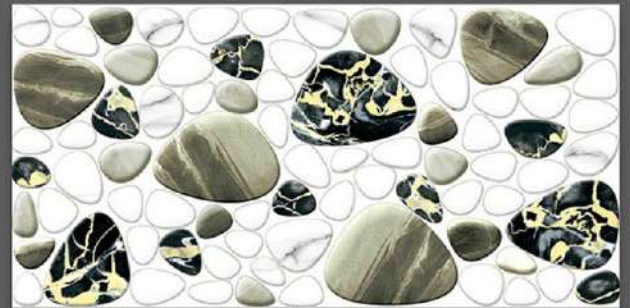
2093_LT-(Random)
2093_HL2-(Punch)
2092_DK-(Random)

2093_LT-(Random)
2093_HL3-(Punch)
2093_DK-(Random)



NOVAC
CERAMIC
Committed to Quality

GLOSSY SERIES



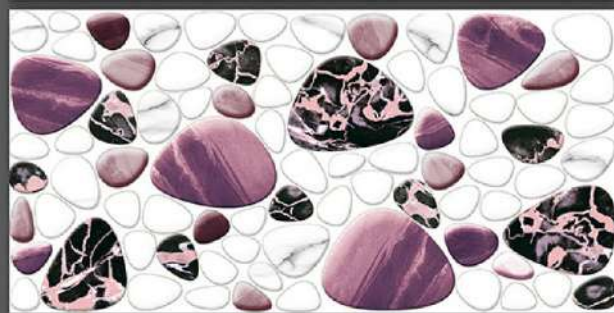
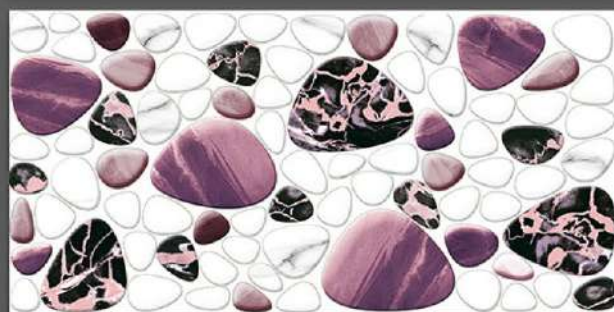
2096_LT-(Random)
2096_HL1-(Punch)

2096_LT-(Random)
2096_HL2-(Punch)



NOVAC
CERAMIC
Committed to Quality

GLOSSY SERIES



2096_LT-(Random)
2096_HL3-(Punch)

2096_LT-(Random)
2096_HL4-(Punch)



NOVAC
CERAMIC
Committed to Quality

GLOSSY SERIES



2096_LT-(Random)
2096_HL5-(Punch)

2096_LT-(Random)
2096_HL5-(Punch)

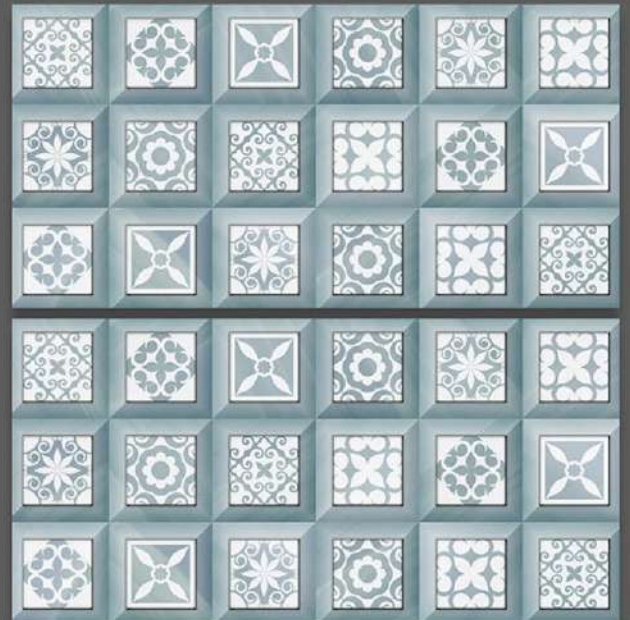


NOVAC
CERAMIC
Committed to Quality

GLOSSY SERIES



2098_LT-(Punch/continue)
2098_HL1-(Punch/continue)
2098_DK-(Punch/continue)



2099_LT-(Random)
2099_HL1-(Punch)
2099_DK-(Random)



NOVAC
CERAMIC
Committed to Quality

GLOSSY SERIES



2100_LT-(Random)
2100_HL1-(Punch)
2100_DK-(Random)

2100_LT-(Random)
2100_HL2-(Punch)
2100_DK-(Random)

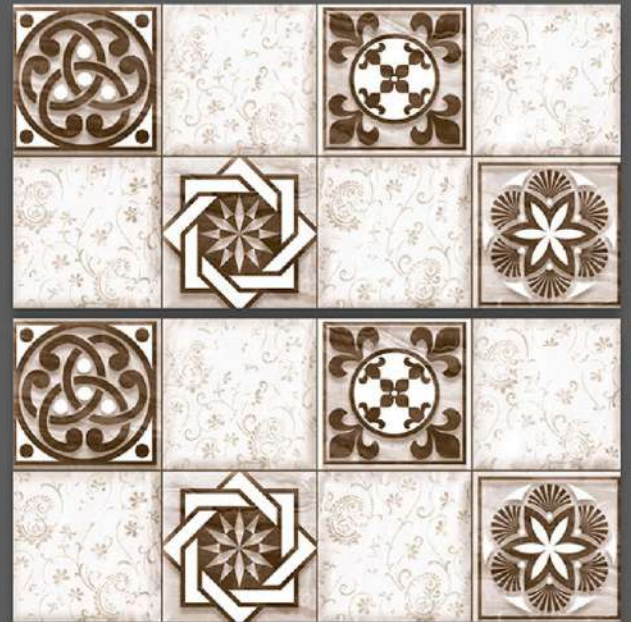


NOVAC
CERAMIC
Committed to Quality

GLOSSY SERIES



2101_LT-(Random)
2101_HL1-(Punch)
2101_DK-(Random)

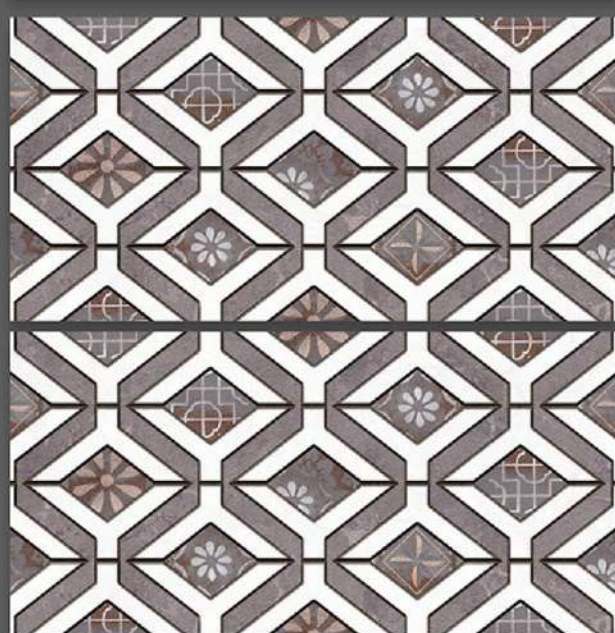
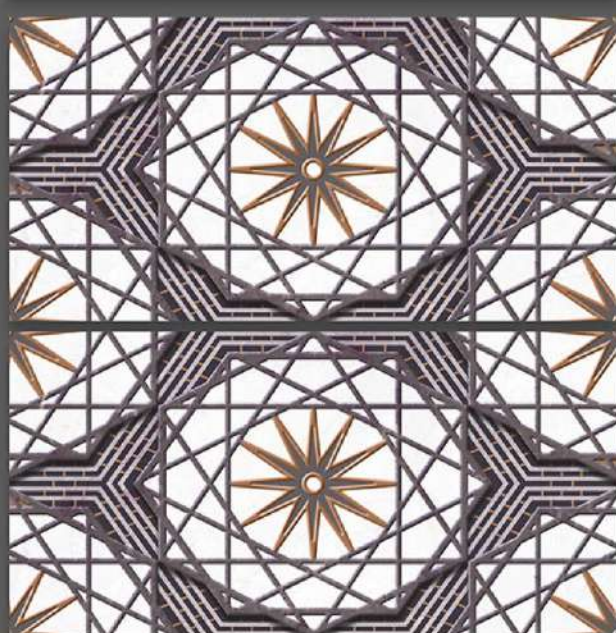
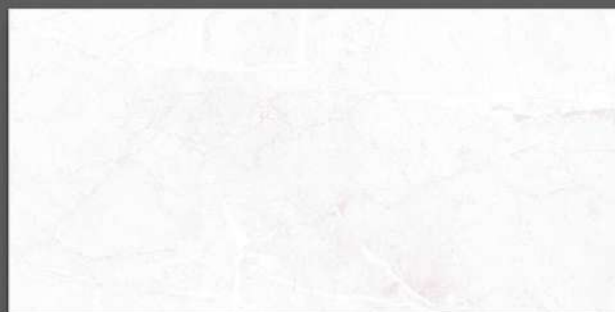


2102_LT-(Random)
2102_HL1-(Punch)
2102_DK-(Random)

GLOSSY SERIES



NOVAC
CERAMIC
Committed to Quality



2104_LT-(Random)
2104_HL1-(Punch)
2104_DK-(Random)

2104_LT-(Random)
2104_HL2-(Punch)
2104_DK-(Random)

GLOSSY SERIES



NOVAC

CERAMIC

Committed to Quality



2105_LT-(Random)
2105_HL1-(Punch)
2105_DK-(Random)

2106_LT-(Plain)
2106_HL1-(Punch)
2106_DK-(Plain)

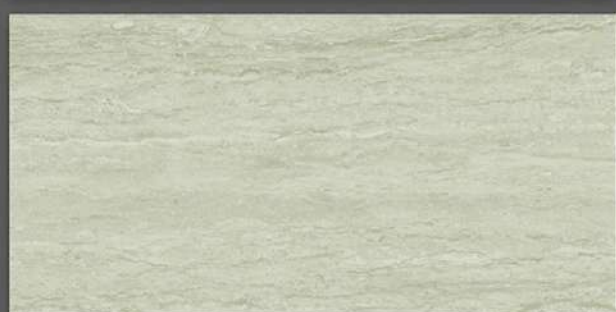
GLOSSY SERIES



NOVAC

CERAMIC

Committed to Quality



2107_LT-(Random)
2107_HL1-(Punch)
2107_DK-(Random)



2108_LT-(Random)
2108_HL1-(Punch)
2108_DK-(Random)

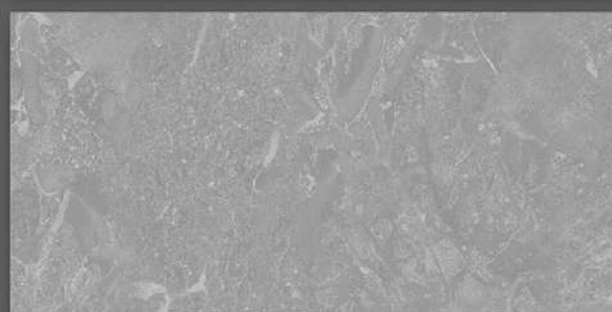
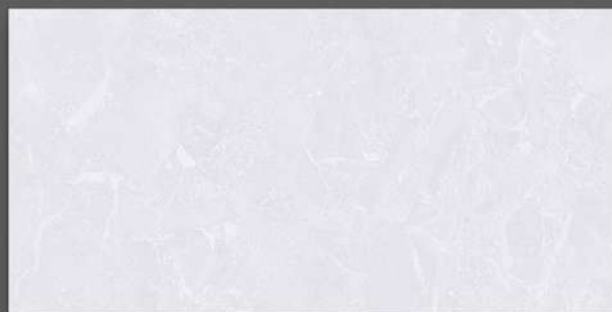


NOVAC
CERAMIC
Committed to Quality

GLOSSY SERIES



2109_LT-(Random)
2109_HL1-(Punch)
2109_DK-(Random)



2110_LT-(Random)
2110_HL1-(Punch)
2110_DK-(Random)

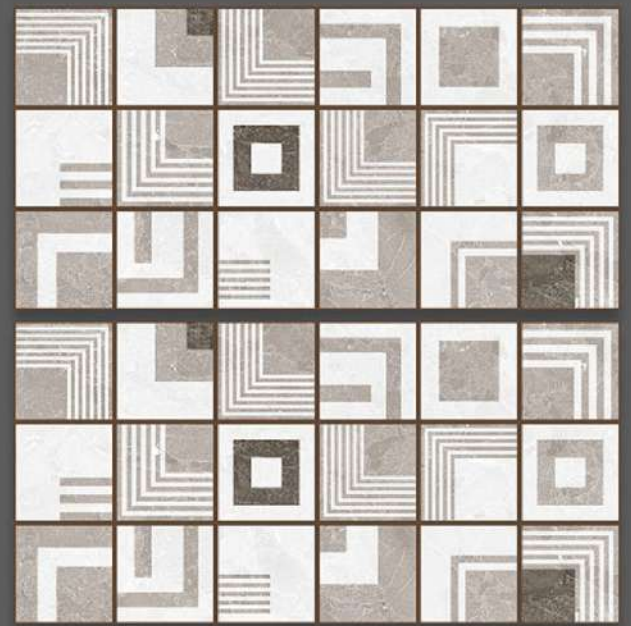


NOVAC
CERAMIC
Committed to Quality

GLOSSY SERIES



2111_LT-(Random)
2111_HL1-(Punch)
2111_DK-(Random)

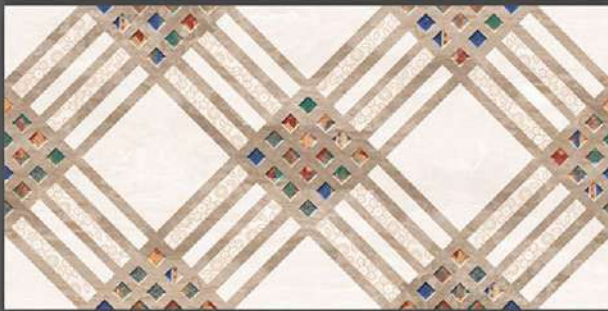
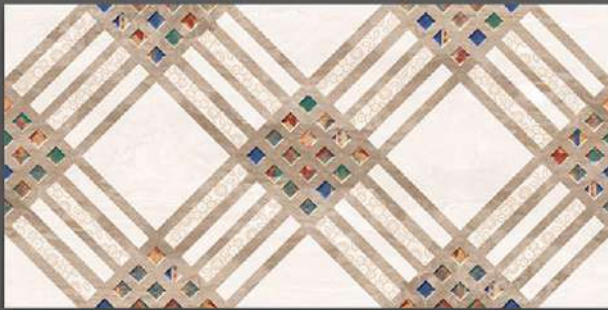


2112_LT-(Random)
2112_HL1-(Punch)
2112_DK-(Random)



NOVAC
CERAMIC
Committed to Quality

GLOSSY SERIES



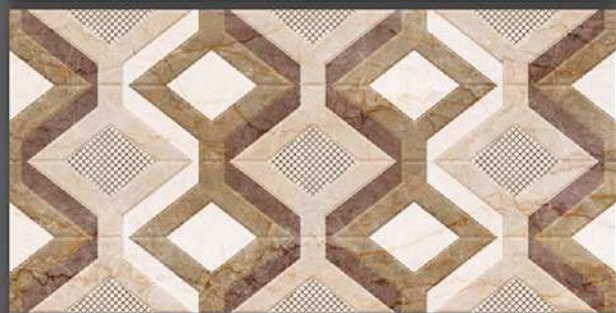
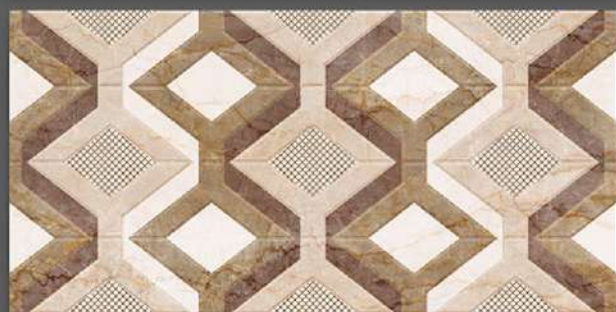
2113_LT-(Random)
2113_HL1-(Punch)
2113_DK-(Random)

2114_LT-(Random)
2114_HL1-(Punch)
2114_LT-(Random)

GLOSSY SERIES



NOVAC
CERAMIC
Committed to Quality



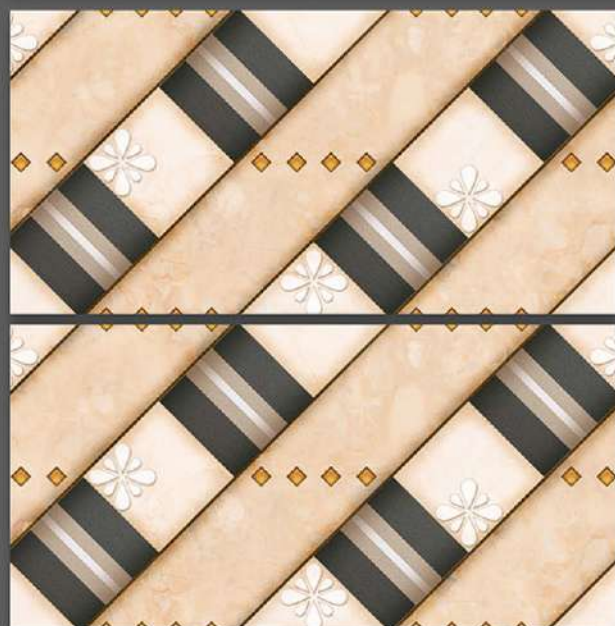
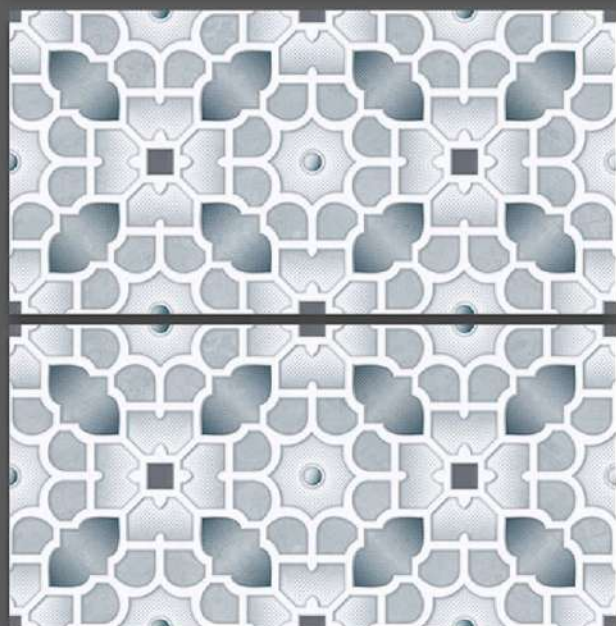
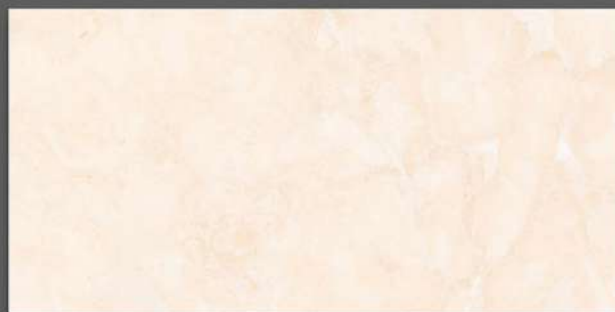
2115_LT-(Random)
2115_HL1-(Punch)
2115_DK-(Random)

2116_DK-(Random)
2116_HL1-(Punch)
2116_DK-(Random)

GLOSSY SERIES



NOVAC
CERAMIC
Committed to Quality



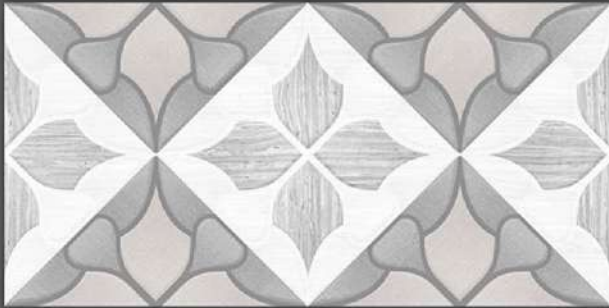
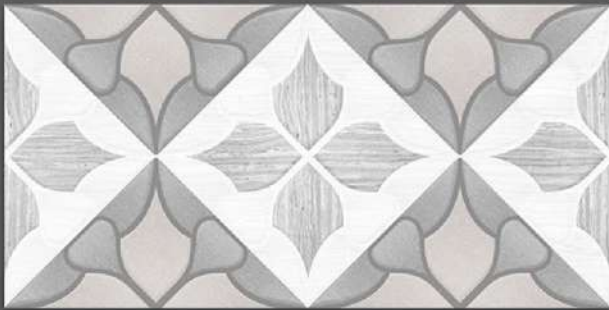
2117_LT-(Random)
2117_HL1-(Punch)
2117_DK-(Random)

2118_LT-(Random)
2118_HL1-(Punch)
2118_DK-(Random)

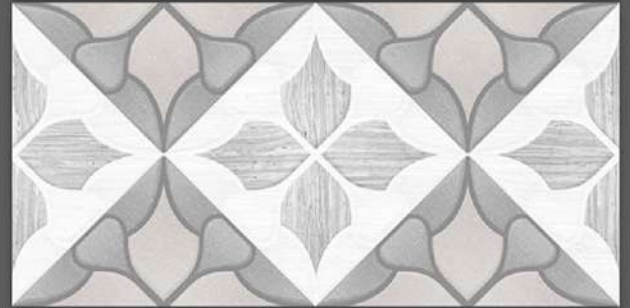


NOVAC
CERAMIC
Committed to Quality

GLOSSY SERIES



2119_LT-(Random)
2119_HL1-(Punch)
2119_DK-(Random)

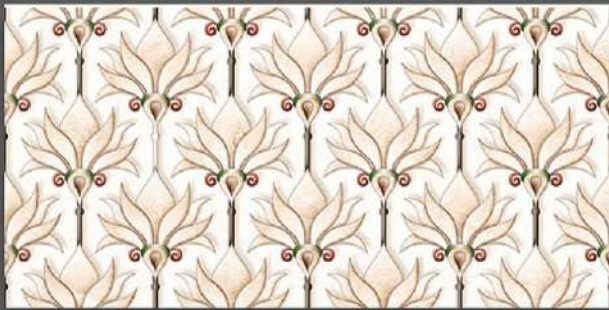
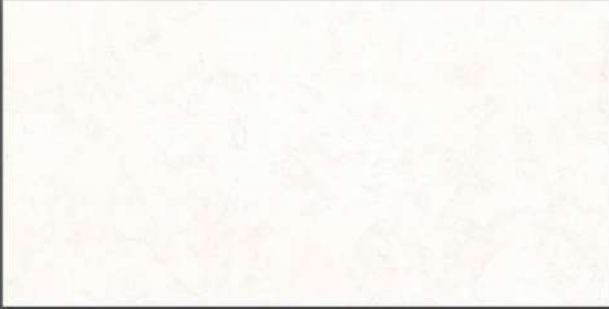


2119_LT-(Random)
2119_HL1-(Punch)
2119_DK-(Random)



NOVAC
CERAMIC
Committed to Quality

GLOSSY SERIES



2121_LT-(Random)
2121_HL1-(Punch)
2121_DK-(Random)

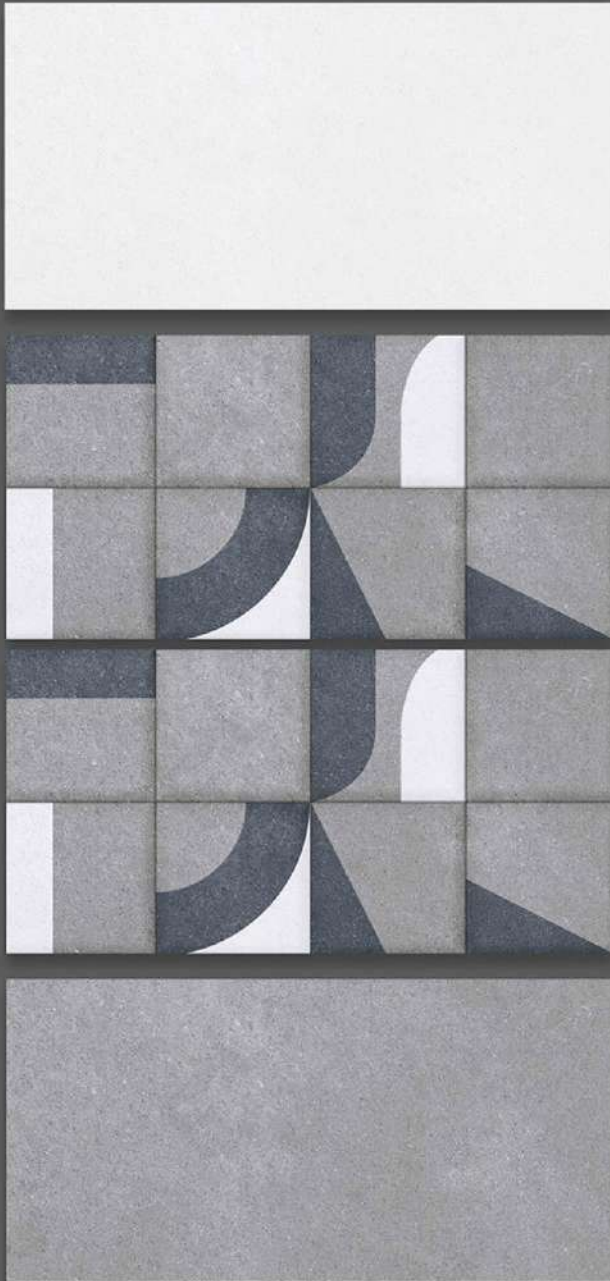


2123_LT-(Random)
2123_HL1-(Punch)
2123_DK-(Random)

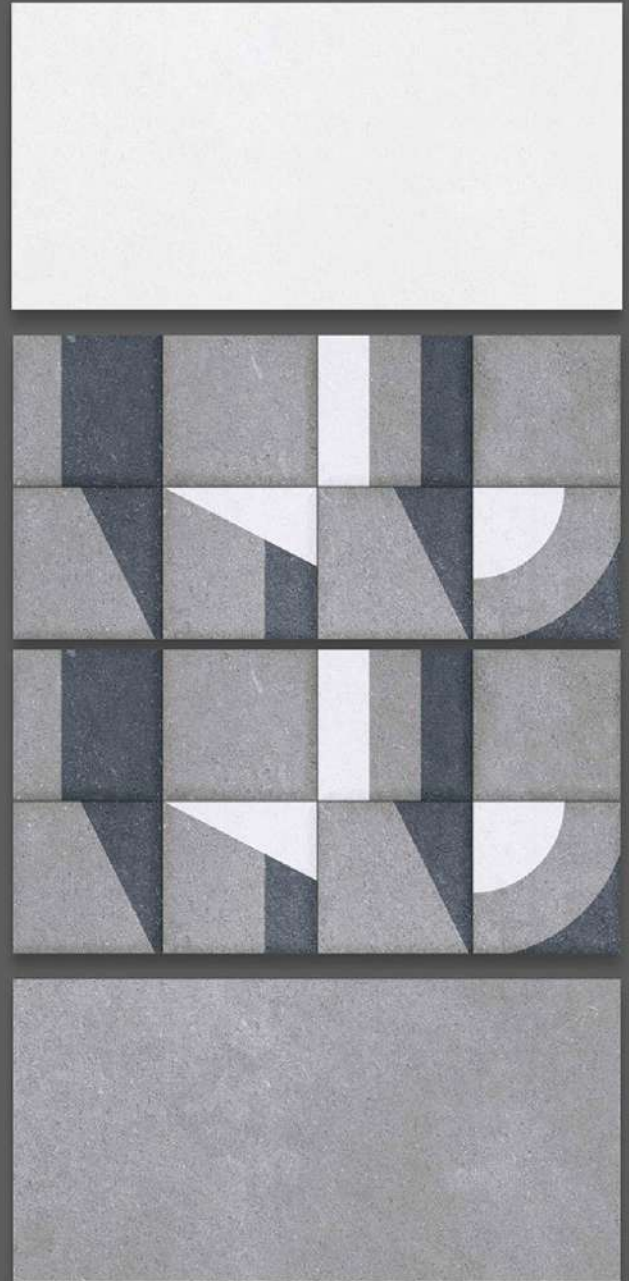


NOVAC
CERAMIC
Committed to Quality

GLOSSY SERIES



2122_LT-(Random)
2122_HL1-(Punch)
2122_DK-(Random)

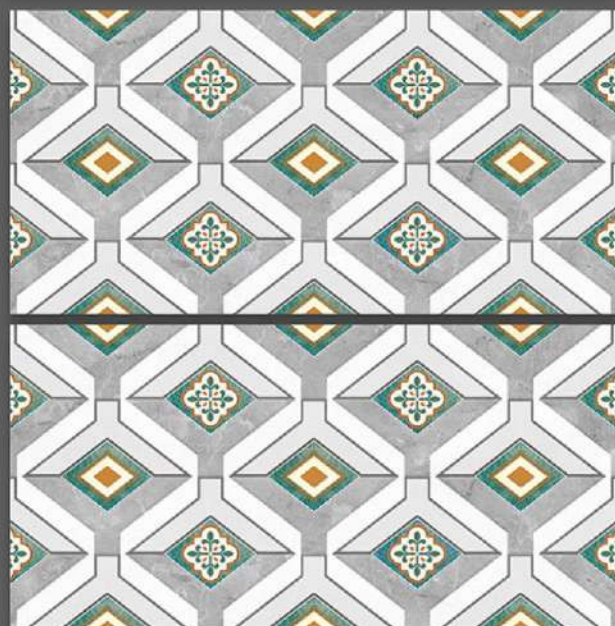


2122_LT-(Random)
2122_HL2-(Punch)
2122_DK-(Random)

GLOSSY SERIES



NOVAC
CERAMIC
Committed to Quality



2124_LT-(Random)
2124_HL1-(Punch)
2124_DK-(Random)

2125_LT-(Random)
2125_HL1-(Punch)
2125_DK-(Random)

GLOSSY SERIES



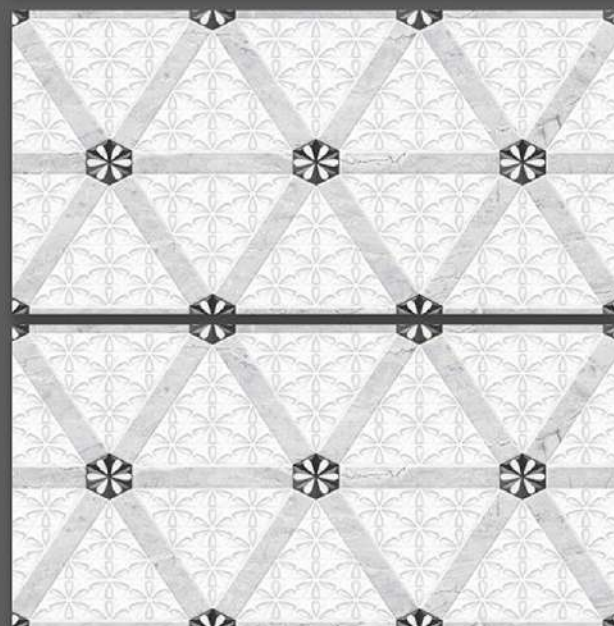
NOVAC

CERAMIC

Committed to Quality



2126_LT-(Random)
2126_HL1-(Punch)
2126_DK-(Random)



2127_LT-(Random)
2127_HL1-(Punch)
2127_LT-(Random)

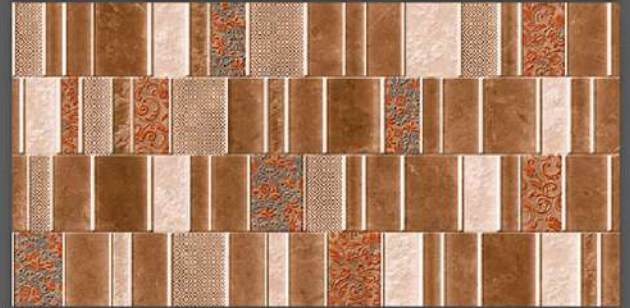
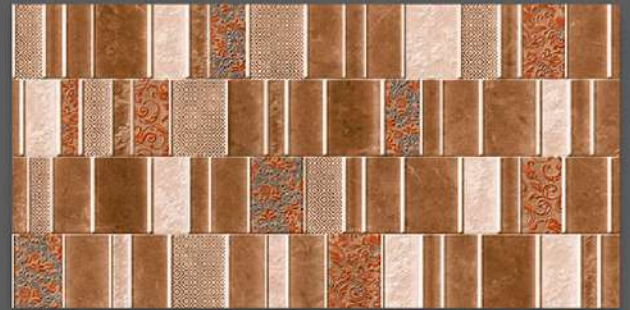


NOVAC
CERAMIC
Committed to Quality

GLOSSY SERIES



2128_LT-(Random)
2128_HL1-(Punch)
2128_DK-(Random)



2132_LT-(Random)
2132_HL1-(Punch)
2132_DK-(Random)



NOVAC
CERAMIC
Committed to Quality

GLOSSY SERIES



2129_LT-(Random)
2129_HL1-(Punch)
2129_DK-(Random)



2129_LT-(Random)
2129_HL2-(Punch)
2129_DK-(Random)



NOVAC
CERAMIC
Committed to Quality

GLOSSY SERIES



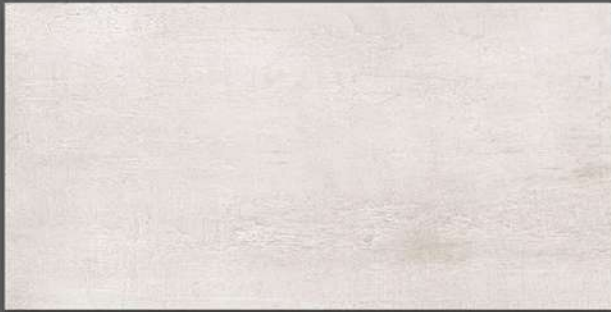
2130_LT-(Random)
2130_HL1-(Punch)
2130_DK-(Random)

2130_LT-(Random)
2130_HL2-(Punch)
2130_DK-(Random)



NOVAC
CERAMIC
Committed to Quality

GLOSSY SERIES



2133_LT-(Random)
2133_HL1-(Punch)
2133_LT-(Random)



2133_LT-(Random)
2133_HL2-(Punch)
2133_LT-(Random)

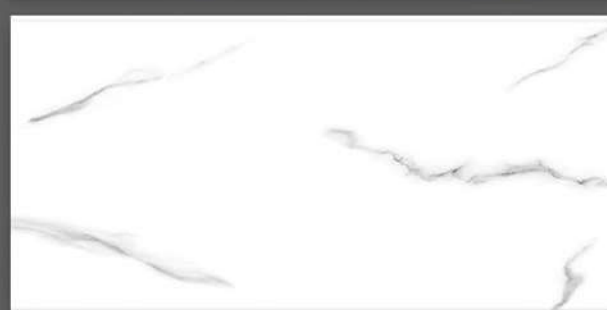
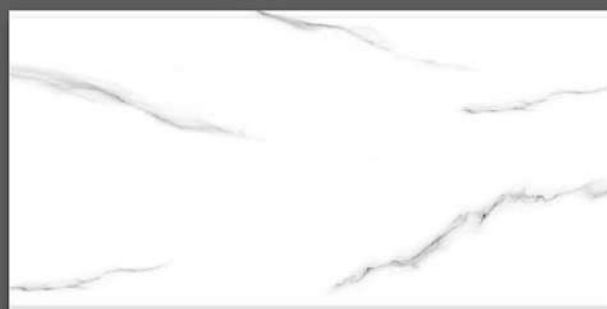


NOVAC

CERAMIC

Committed to Quality

GLOSSY SERIES



2134-LT-(Random/Punch)
2134_HL1-(Punch)

2134-LT-(Random/Punch)
2134_HL1-(Punch)



NOVAC CERAMIC LLP

At: Lalpar, Real Plaza - 1, Near Omkar Petroleum,
8-A, National Highway, Morbi - 363 642.

Cell: +91 97251 20510

www.novacceramic.com | info@novacceramic.com