



NOVAC

C E R A M I C

Committed to Quality



GLOSSY V1

300
X_{mm}
600

DIGITAL WALL TILES



NOVAC
CERAMIC
Committed to Quality

GLOSSY SERIES



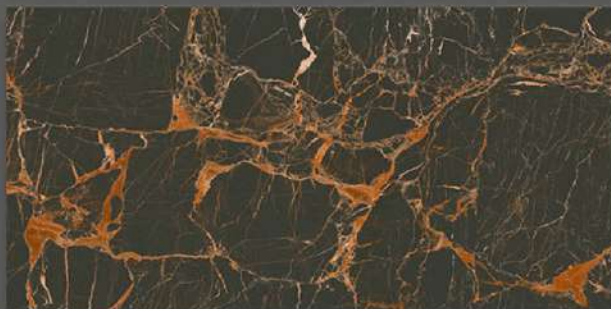
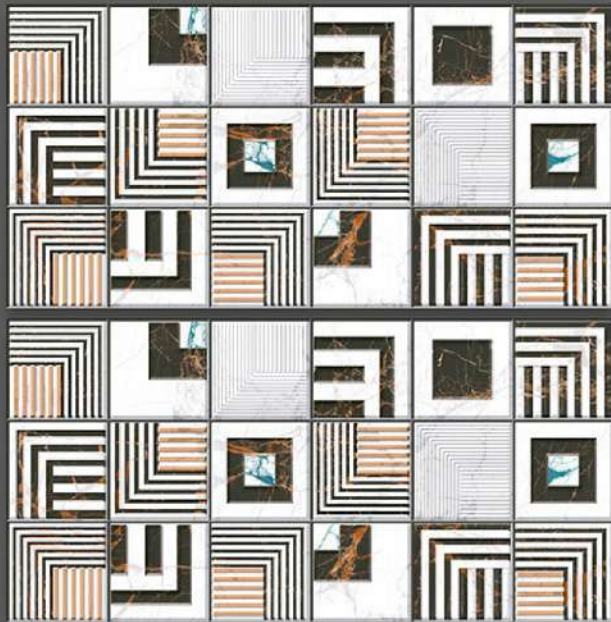
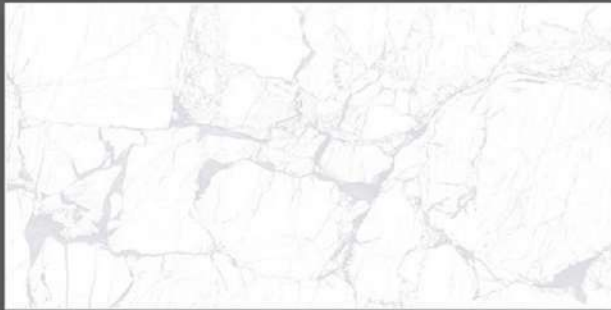
1001_LT-(Random)
1001_HL1-(Punch)
1001_LT-(Random)

1001_LT-(Random)
1001_HL1-(Punch)
1001_LT-(Random)



NOVAC
CERAMIC
Committed to Quality

GLOSSY SERIES



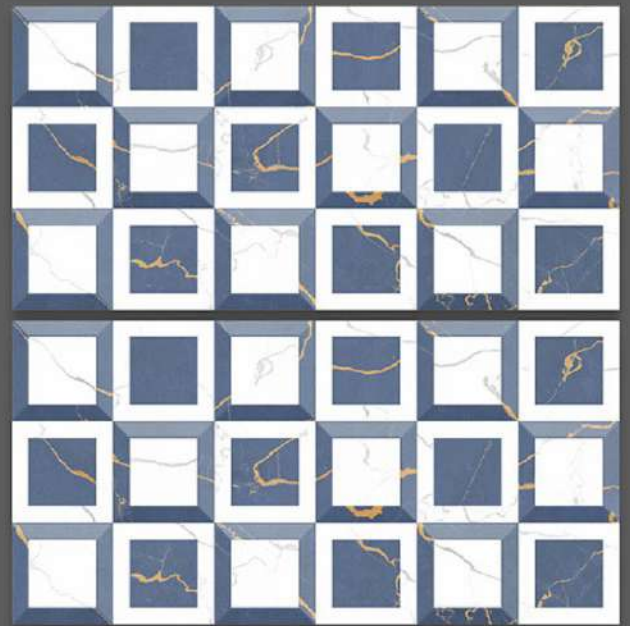
1003_LT-(Random)
1003_HL1-(Punch)
1003_DK-(Random)

1003_LT-(Random)
1003_HL2-(Punch)
1003_DK-(Random)



NOVAC
CERAMIC
Committed to Quality

GLOSSY SERIES



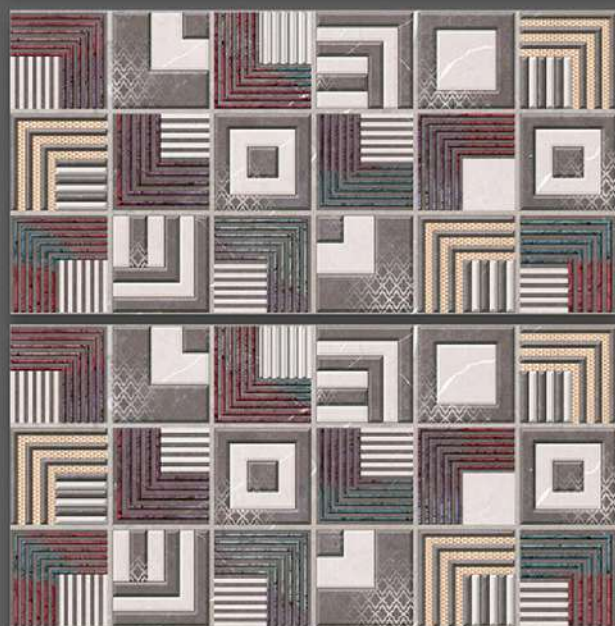
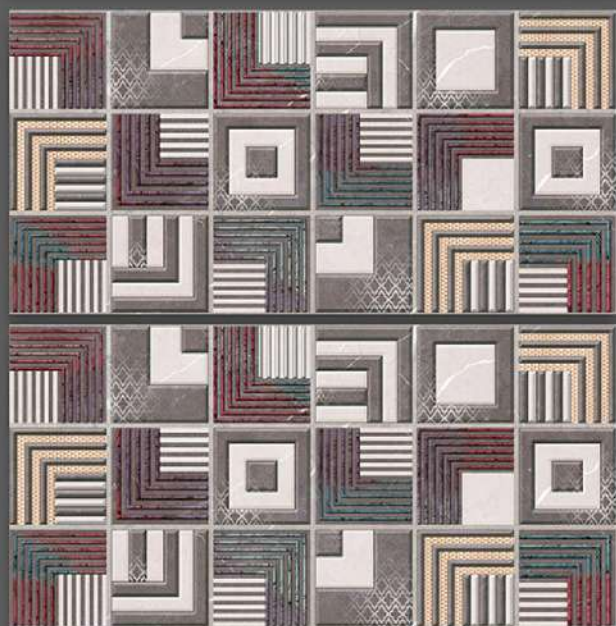
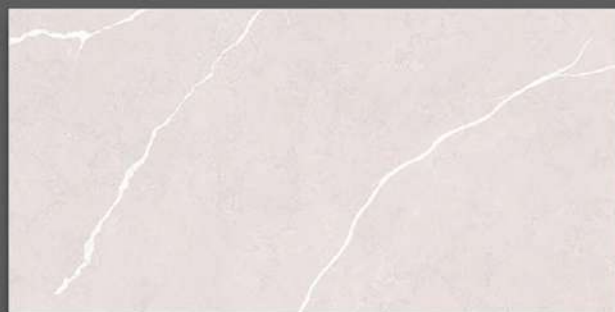
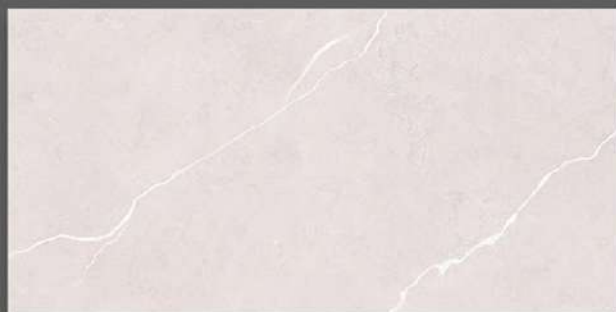
1006_LT-(Random)
1006_HL1-(Punch)
1006_DK-(Random)

1006_LT-(Random)
1006_HL2-(Punch)
1006_DK-(Random)

GLOSSY SERIES



NOVAC
CERAMIC
Committed to Quality



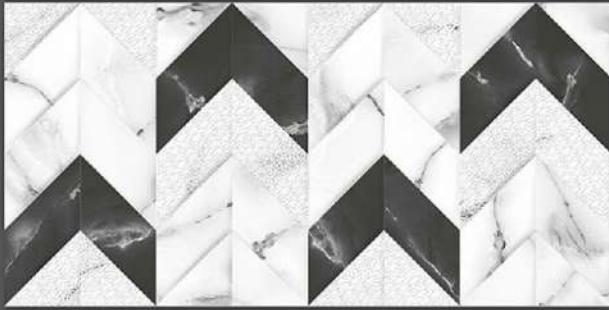
1010_LT-(Random)
1010_HL1-(Punch)
1010_DK-(Random)

1010_LT-(Random)
1010_HL1-(Punch)
1010_DK-(Random)



NOVAC
CERAMIC
Committed to Quality

GLOSSY SERIES



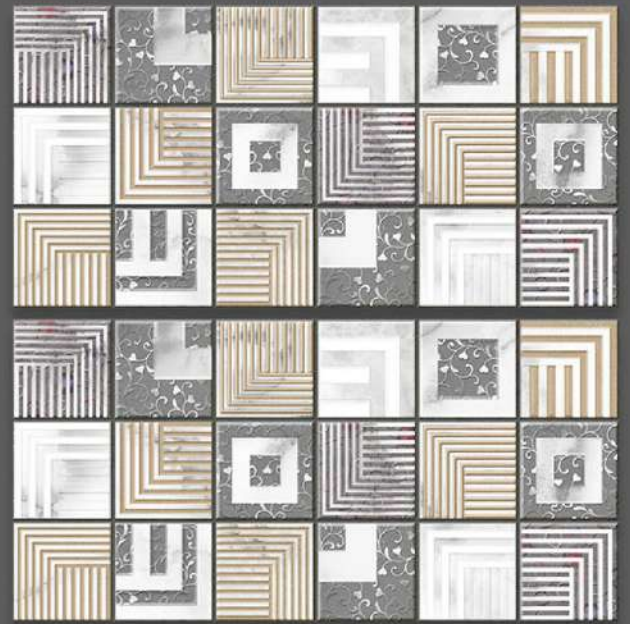
1011_LT-(Random)
1011_HL1-(Punch)
1011_LT-(Random)

1011_LT-(Random)
1011_HL2-(Punch)
1011_LT-(Random)



NOVAC
CERAMIC
Committed to Quality

GLOSSY SERIES



1012_LT-(Random)
1012_HL1-(Punch)
1012_LT-(Random)

1012_LT-(Random)
1012_HL2-(Punch)
1012_LT-(Random)



NOVAC

CERAMIC

Committed to Quality

GLOSSY SERIES



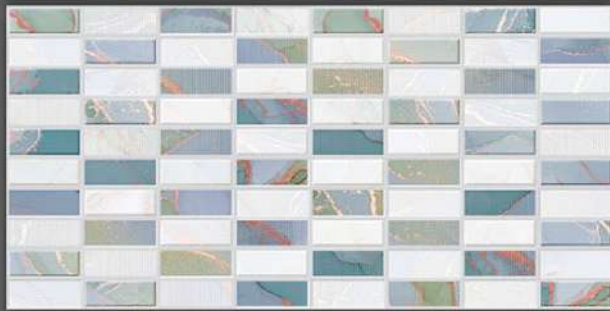
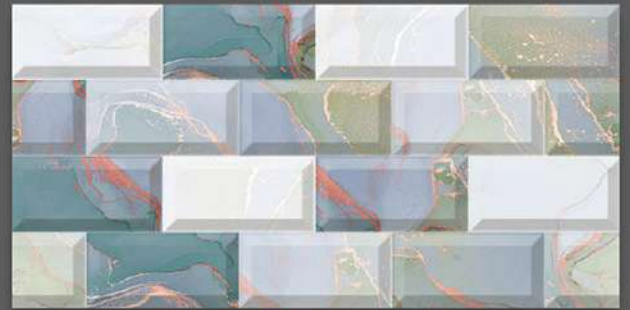
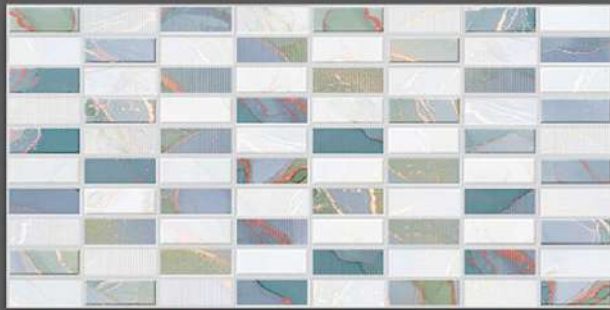
1014_LT-(Random)
1014_HL1-(Punch)
1014_LT-(Random)

1014_LT-(Random)
1014_HL1-(Punch)
1014_LT-(Random)



NOVAC
CERAMIC
Committed to Quality

GLOSSY SERIES



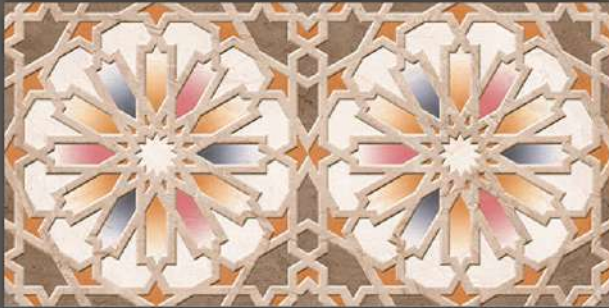
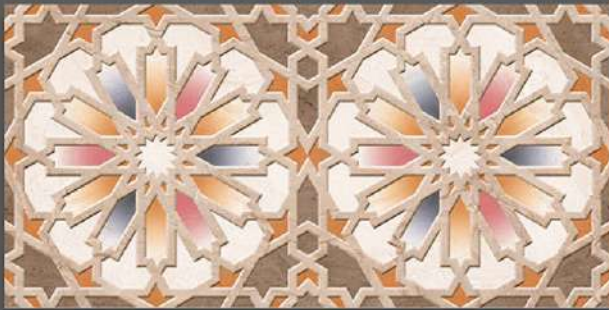
1016_LT-(continue)
1016_HL1-(Punch)
1016_DK-(continue)

1016_LT-(continue)
1016_HL2-(Punch)
1016_DK-(continue)



NOVAC
CERAMIC
Committed to Quality

GLOSSY SERIES



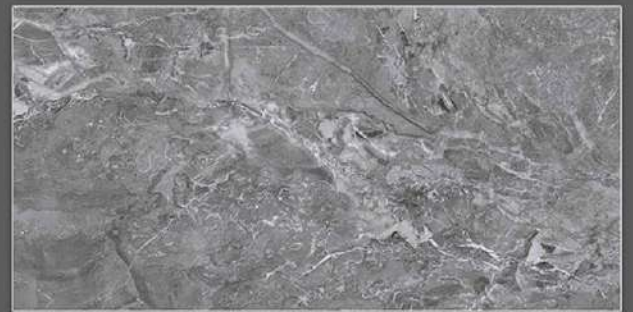
1017_LT-(Random)
1017_HL1-(Punch)
1017_DK-(Random)

1017_LT-(Random)
1017_HL2-(Punch)
1017_DK-(Random)



NOVAC
CERAMIC
Committed to Quality

GLOSSY SERIES



1018_LT-(Random)
1018_HL1-(Punch)
1018_DK-(Random)

1018_LT-(Random)
1018_HL2-(Punch)
1018_DK-(Random)



NOVAC
CERAMIC
Committed to Quality

GLOSSY SERIES



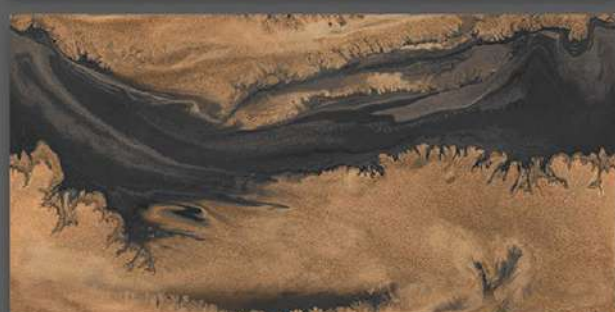
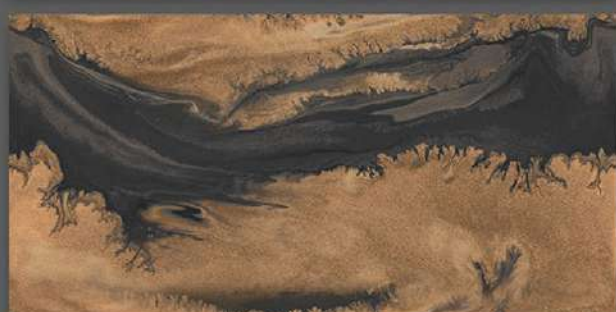
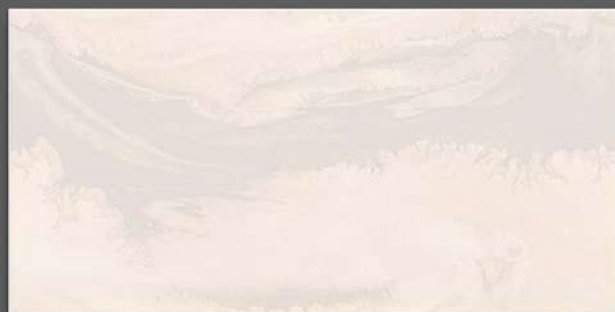
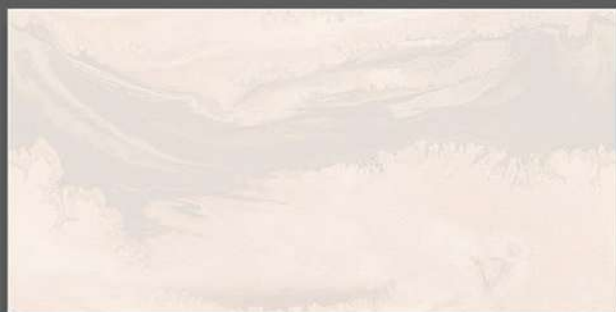
1022_LT-(Random)
1022_HL1-(Punch)
1022_DK-(Random)

1022_LT-(Random)
1022_HL2-(Punch)
1022_DK-(Random)



NOVAC
CERAMIC
Committed to Quality

GLOSSY SERIES



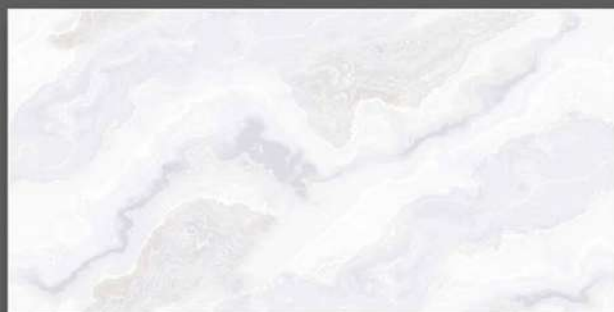
1023_LT-(continue)
1023_HL1-(Punch)
1023_DK-(continue)

1023_LT-(continue)
1023_HL1-(Punch)
1023_DK-(continue)

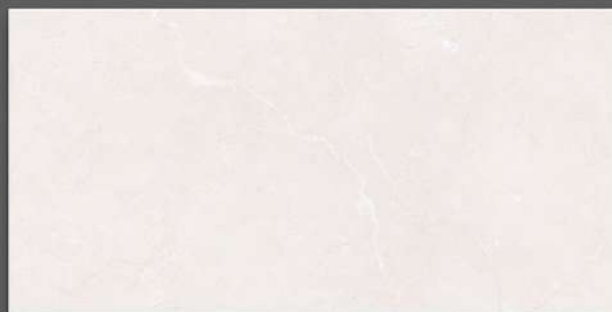
GLOSSY SERIES



NOVAC
CERAMIC
Committed to Quality



1024_LT-(continue)
1024_HL1-(Punch)
1024_DK-(continue)

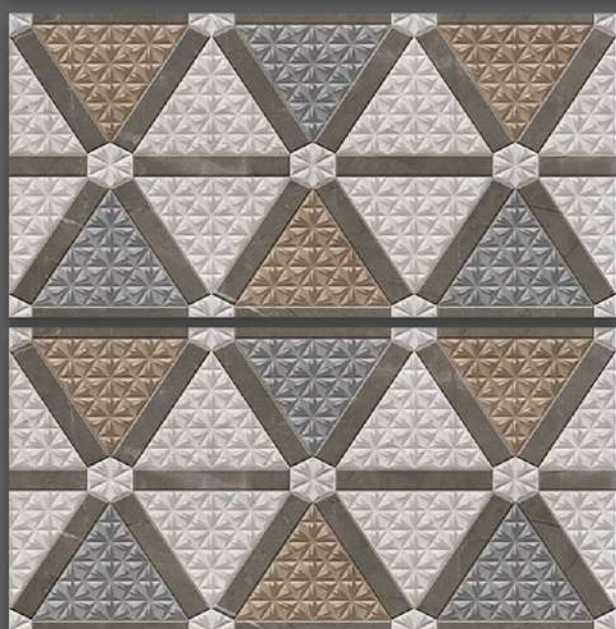


1027_LT-(Random)
1027_HL1-(Punch)
1027_DK-(Random)

GLOSSY SERIES



NOVAC
CERAMIC
Committed to Quality



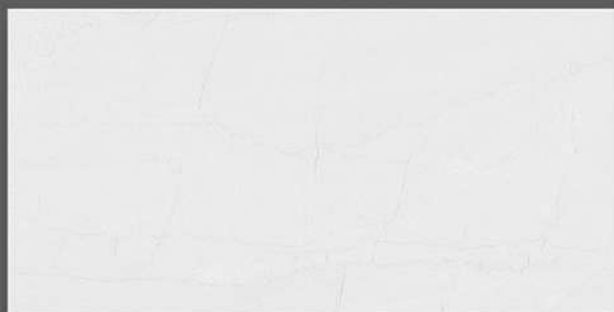
1026_LT-(Random)
1026_HL1-(Punch)
1026_LT-(Random)

1026_LT-(Random)
1026_HL2-(Punch)
1026_LT-(Random)

GLOSSY SERIES



NOVAC
CERAMIC
Committed to Quality



1028_LT-(Random)
1028_HL1-(Punch)
1028_DK-(Random)



1039_LT-(Random)
1039_HL1-(Punch)
1039_DK-(Random)

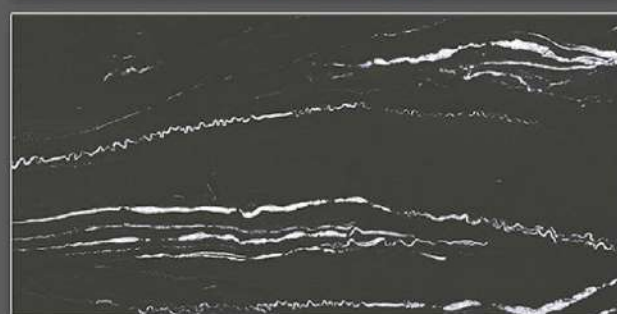
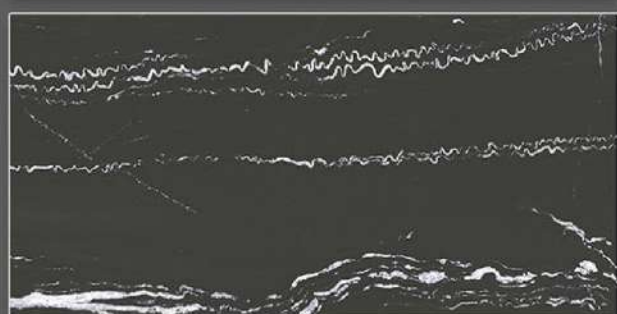
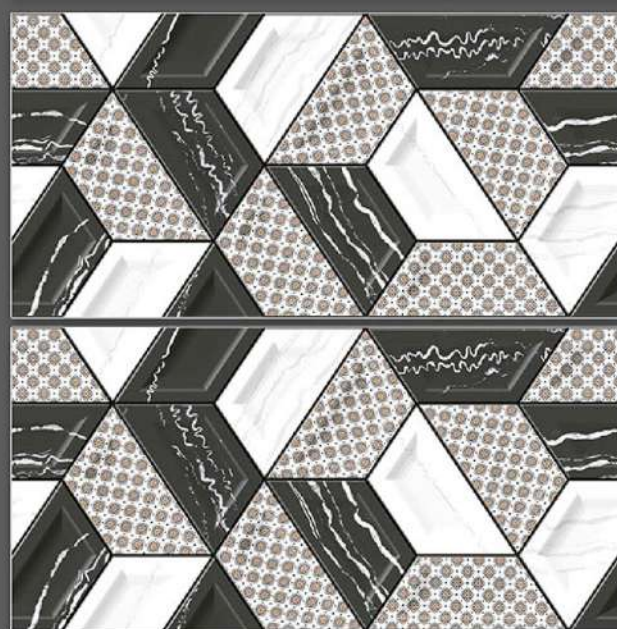
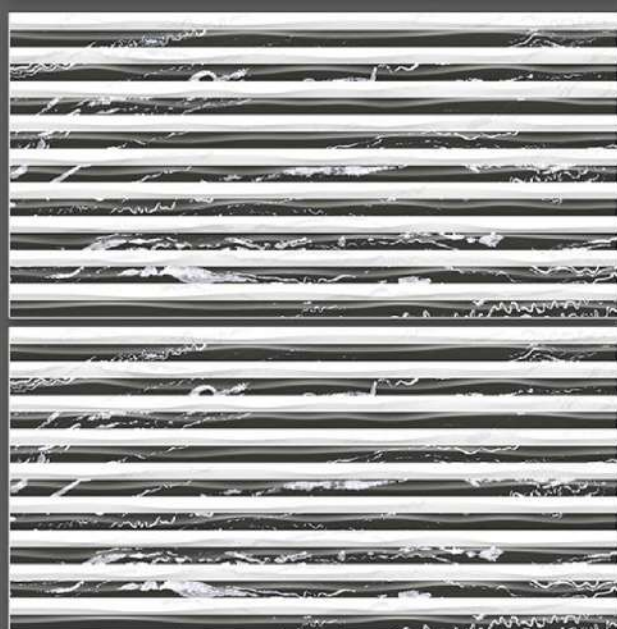


NOVAC

CERAMIC

Committed to Quality

GLOSSY SERIES



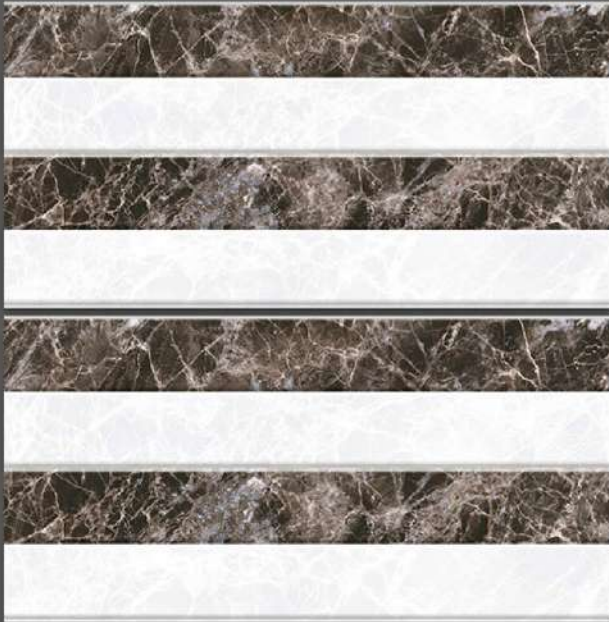
1029_LT-(Random)
1029_HL1-(Punch)
1029_DK-(Random)

1029_LT-(Random)
1029_HL2-(Punch)
1029_DK-(Random)



NOVAC
CERAMIC
Committed to Quality

GLOSSY SERIES



1030_LT-(Random)
1030_HL1-(Punch)
1030_DK-(Random)



1030_LT-(Random)
1030_HL2-(Punch)
1030_DK-(Random)



NOVAC
CERAMIC
Committed to Quality

GLOSSY SERIES



1032_LT-(Random)
1032_HL1-(Punch)
1032_DK-(Random)

1032_LT-(Random)
1032_HL2-(Punch)
1032_DK-(Random)

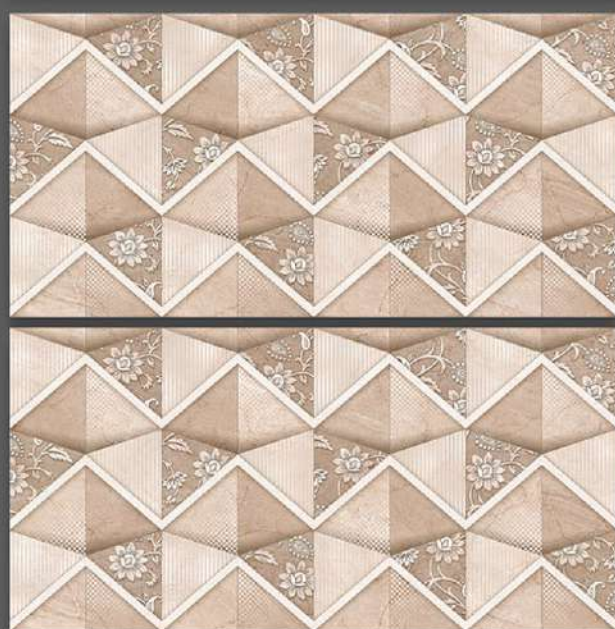


NOVAC

CERAMIC

Committed to Quality

GLOSSY SERIES



1037_LT-(Random)
1037_HL1-(Punch)
1037_DK-(Random)

1037_LT-(Random)
1037_HL2-(Punch)
1037_DK-(Random)

GLOSSY SERIES



1041_LT-(Random)
1041_HL1-(Punch)
1041_DK-(Random)

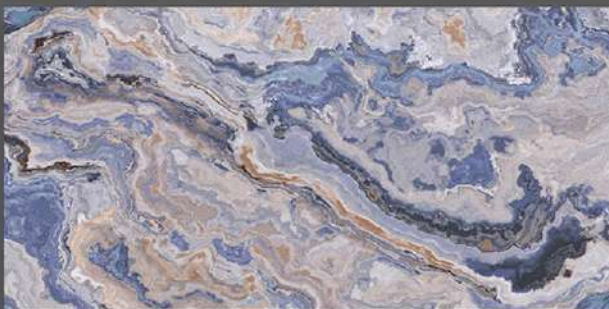


1041_LT-(Random)
1041_HL2-(Punch)
1041_DK-(Random)



NOVAC
CERAMIC
Committed to Quality

GLOSSY SERIES



1042_LT-(Random)
1042_HL1-(Punch)
1042_DK-(Random)

1044_LT-(continue)
1044_HL1-(Punch)
1044_DK-(continue)



NOVAC
CERAMIC
Committed to Quality

GLOSSY SERIES



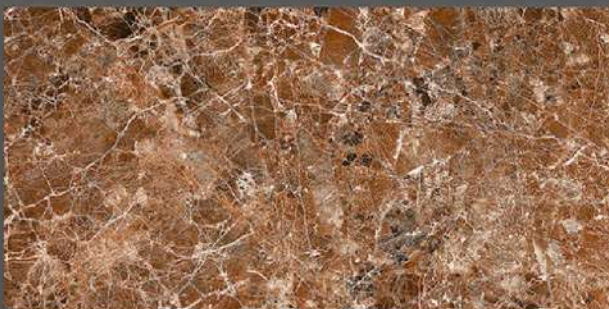
1047_LT-(Random)
1047_HL1-(Punch)
1047_DK-(Random)

1047_LT-(Random)
1047_HL1-(Punch)
1047_DK-(Random)



NOVAC
CERAMIC
Committed to Quality

GLOSSY SERIES



1047_LT-(Random)
1049_HL1-(Punch)
1049_DK-(Random)

1047_LT-(Random)
1049_HL1-(Punch)
1049_DK-(Random)



NOVAC
CERAMIC
Committed to Quality

GLOSSY SERIES



1051_LT-(Random)
1051_HL1-(Punch)
1051_DK-(Random)

1051_LT-(Random)
1051_HL2-(Punch)
1051_DK-(Random)



NOVAC
CERAMIC
Committed to Quality

GLOSSY SERIES



1052_LT-(Random)
1052_HL1-(Punch)
1052_LT-(Random)

1052_LT-(Random)
1052_HL2-(Punch)
1052_LT-(Random)

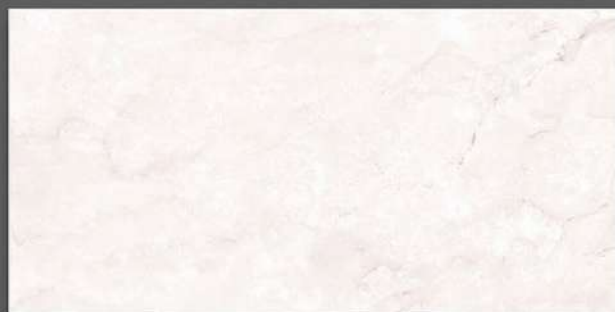


NOVAC

CERAMIC

Committed to Quality

GLOSSY SERIES



1061_LT-(Random)
1061_HL1-(Punch)
1061_DK-(Random)

1061_LT-(Random)
1061_HL2-(Punch)
1061_DK-(Random)



NOVAC
CERAMIC
Committed to Quality

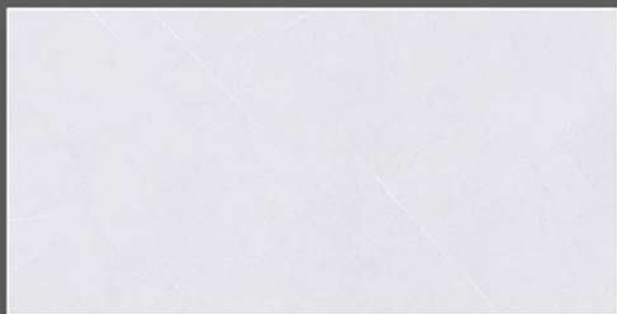
GLOSSY SERIES



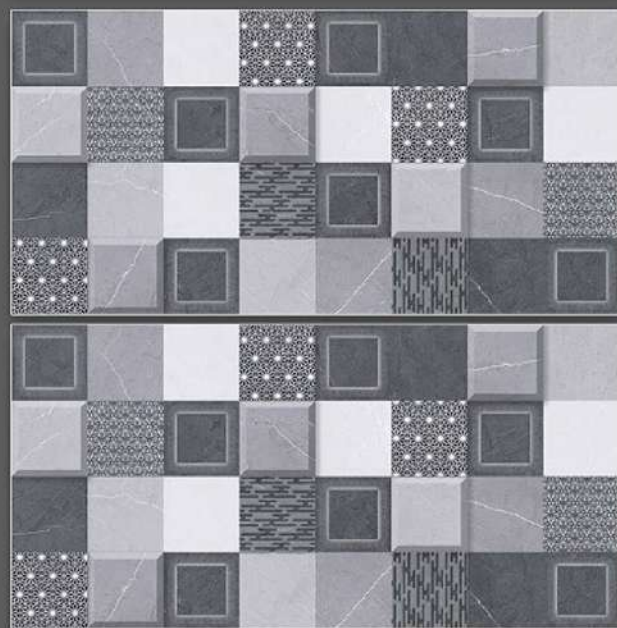
1062_LT-(Random)
1062_HL1-(Punch)
1062_DK-(Random)

1062_LT-(Random)
1062_HL2-(Punch)
1062_DK-(Random)

GLOSSY SERIES



1064_LT-(Random)
1064_HL1-(Punch)
1064_DK-(Random)



1064_LT-(Random)
1064_HL2-(Punch)
1064_DK-(Random)

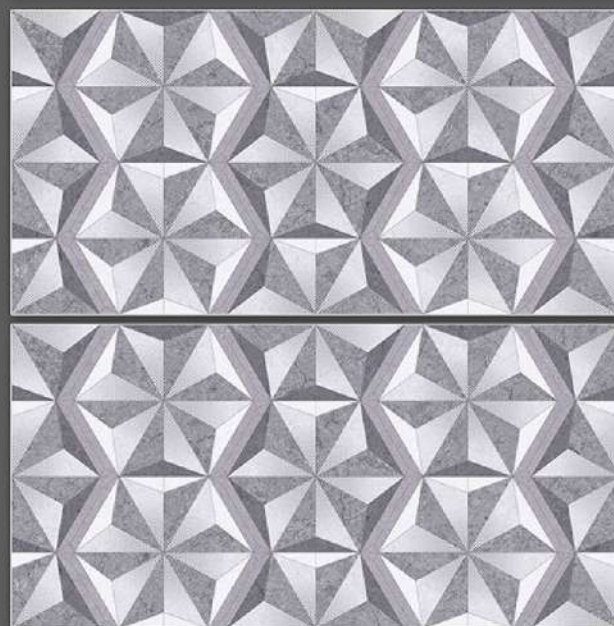


NOVAC
CERAMIC
Committed to Quality

GLOSSY SERIES



1065_LT-(Random)
1065_HL1-(Punch)
1065_DK-(Random)



1065_LT-(Random)
1065_HL2-(Punch)
1065_DK-(Random)



NOVAC
CERAMIC
Committed to Quality

GLOSSY SERIES



1067_LT-(Random)
1067_HL1-(Punch)
1067_DK-(Random)

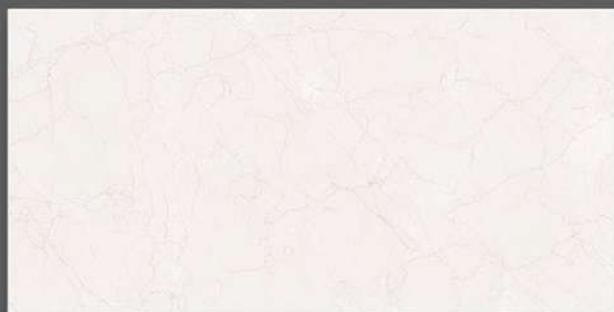


1067_LT-(Random)
1067_HL2-(Punch)
1067_DK-(Random)

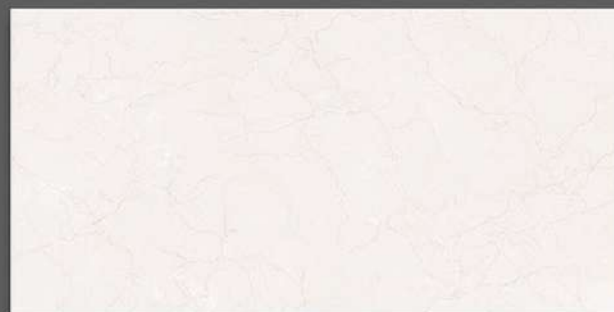


NOVAC
CERAMIC
Committed to Quality

GLOSSY SERIES



1069_LT-(Random)
1069_HL1-(Punch)
1069_DK-(Random)



1069_LT-(Random)
1069_HL2-(Punch)
1069_DK-(Random)



NOVAC
CERAMIC
Committed to Quality

GLOSSY SERIES



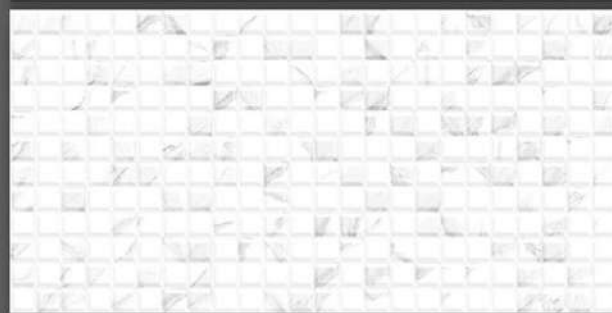
1070_LT-(Random)
1070_HL1-(Punch)
1070_DK-(Random)

1071_LT-(Random)
1071_HL1-(Punch)
1071_DK-(Random)



NOVAC
CERAMIC
Committed to Quality

GLOSSY SERIES



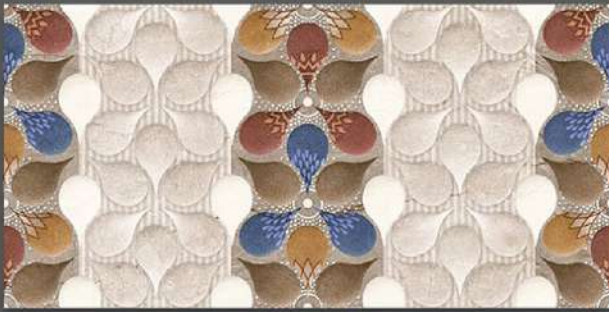
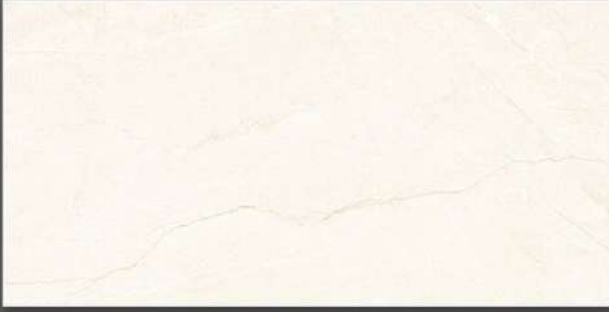
1072_LT-(Random)
1072_HL2-(Punch)
1072_LT-(Random)

1072_LT-(Random)
1072_HL3-(Punch)
1072_LT-(Random)



NOVAC
CERAMIC
Committed to Quality

GLOSSY SERIES



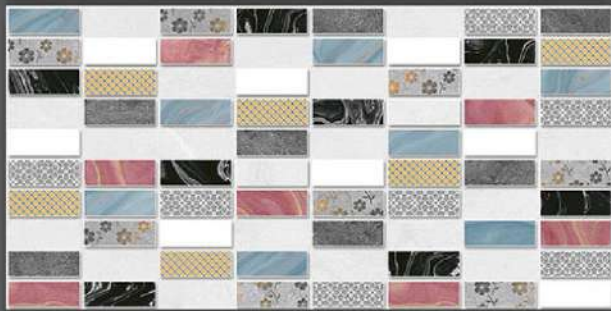
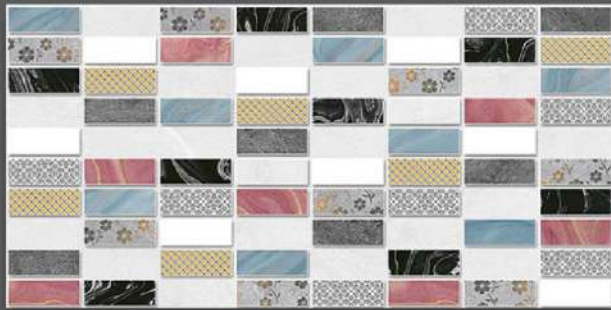
1073_LT-(Random)
1073_HL1-(Punch)
1073_DK-(Random)

1073_LT-(Random)
1073_HL2-(Punch)
1073_DK-(Random)

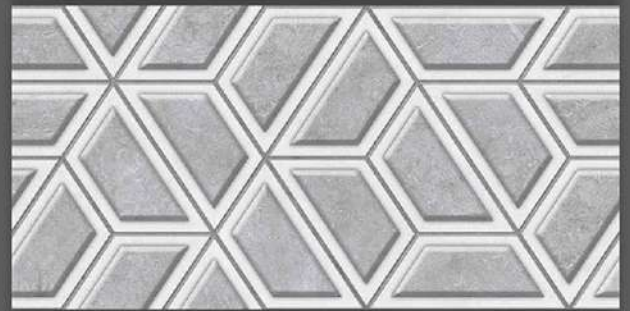
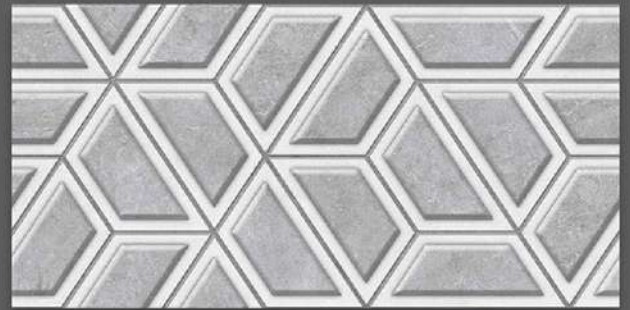


NOVAC
CERAMIC
Committed to Quality

GLOSSY SERIES



1074_LT-(Random)
1074_HL1-(Punch)
1074_DK-(Random)

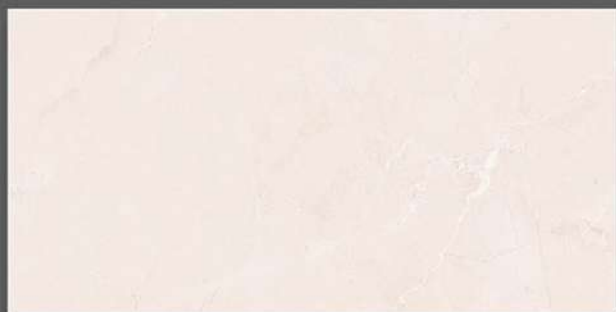


1074_LT-(Random)
1074_HL2-(Punch)
1074_DK-(Random)

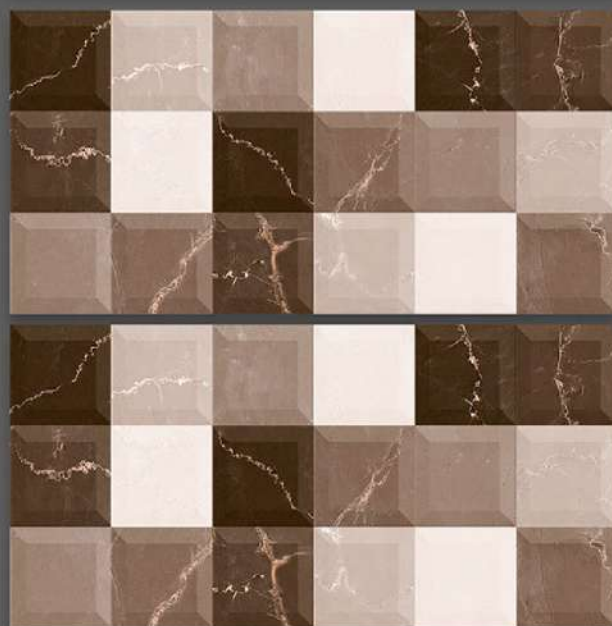


NOVAC
CERAMIC
Committed to Quality

GLOSSY SERIES



1077_LT-(Random)
1077_HL1-(Punch)
1077_DK-(Random)



1077_LT-(Random)
1077_HL2-(Punch)
1077_DK-(Random)



NOVAC
CERAMIC
Committed to Quality

GLOSSY SERIES



1078_LT-(Random)
1078_HL1-(Punch)
1078_DK-(Random)

1078_LT-(Random)
1078_HL2-(Punch)
1078_DK-(Random)

GLOSSY SERIES



NOVAC
CERAMIC
Committed to Quality



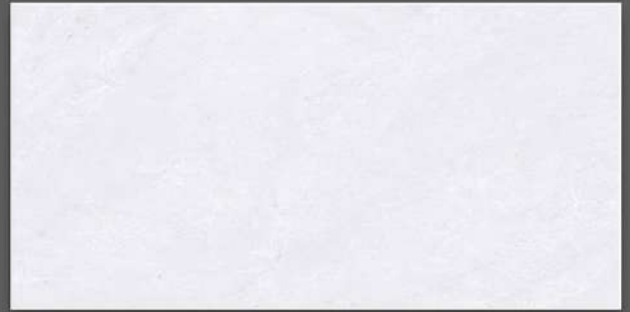
1081_LT-(Random)
1081_HL1-(Punch)
1081_DK-(Random)

1081_LT-(Random)
1081_HL2-(Punch)
1081_DK-(Random)



NOVAC
CERAMIC
Committed to Quality

GLOSSY SERIES



1082_LT-(Random)
1082_HL1-(Punch)
1082_DK-(Random)

1082_LT-(Random)
1082_HL2-(Punch)
1082_DK-(Random)



NOVAC
CERAMIC
Committed to Quality

GLOSSY SERIES



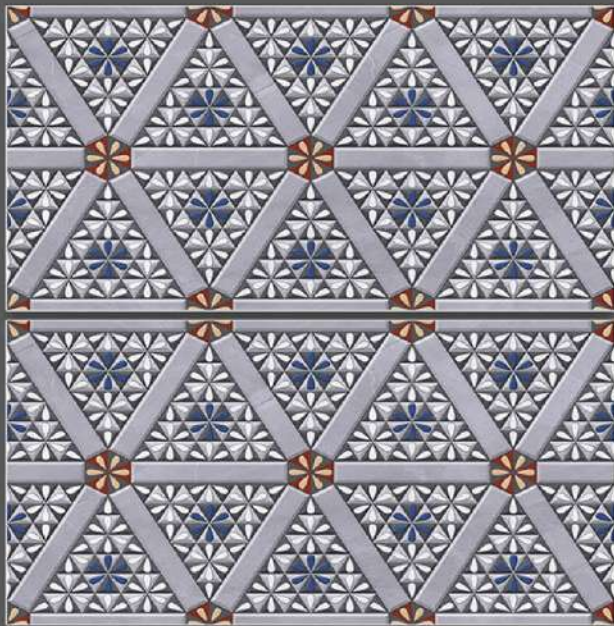
1083_LT-(Random)
1083_HL1-(Punch)
1083_LT-(Random)

1083_LT-(Random)
1083_HL2-(Plain)
1083_LT-(Random)



NOVAC
CERAMIC
Committed to Quality

GLOSSY SERIES



1084_LT-(Random)
1084_HL1-(Punch)
1084_DK-(Random)

1084_LT-(Random)
1084_HL2-(Punch)
1084_DK-(Random)

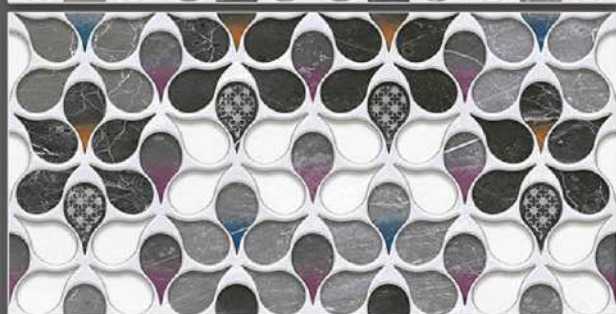
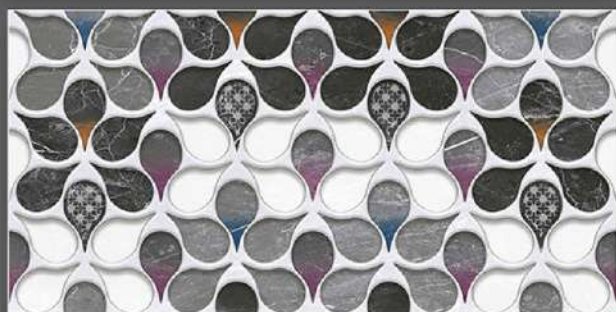
GLOSSY SERIES



NOVAC

CERAMIC

Committed to Quality



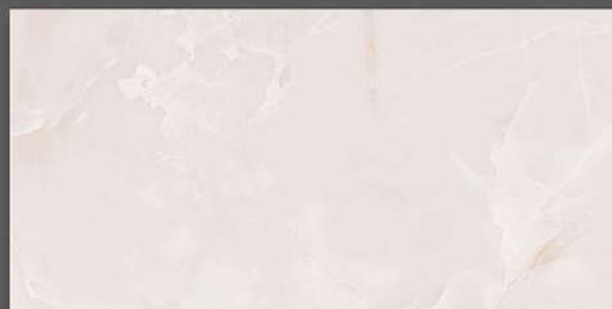
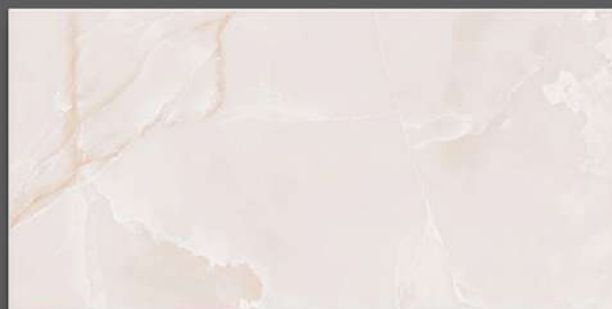
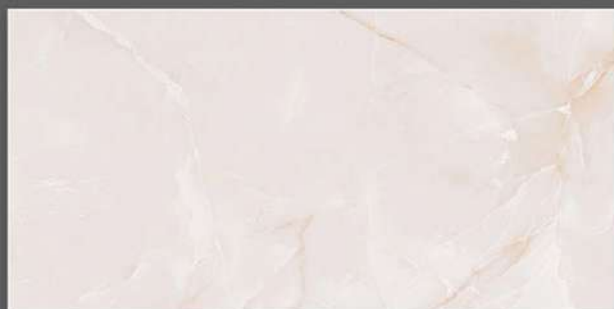
1085_LT-(Random)
1085_HL1-(Punch)
1085_DK-(Random)

1085_LT-(Random)
1085_HL2-(Punch)
1085_DK-(Random)



NOVAC
CERAMIC
Committed to Quality

GLOSSY SERIES



1086_LT-(Random)
1086_HL1-(Punch)
1086_LT-(Random)

1086_LT-(Random)
1086_HL2-(Punch)
1086_LT-(Random)

GLOSSY SERIES



NOVAC

CERAMIC

Committed to Quality



1087_LT-(Plain)
1087_HL1-(Punch)
1087_DK-(Plain)

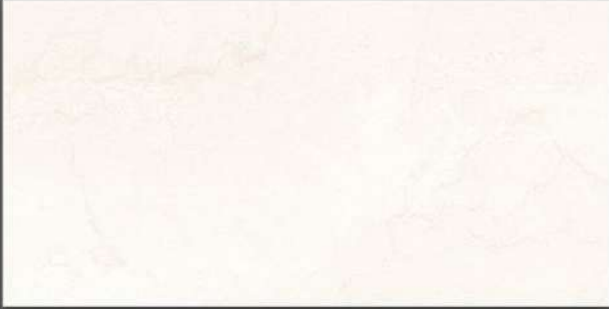


1087_LT-(Plain)
1087_HL2-(Punch)
1087_DK-(Plain)



NOVAC
CERAMIC
Committed to Quality

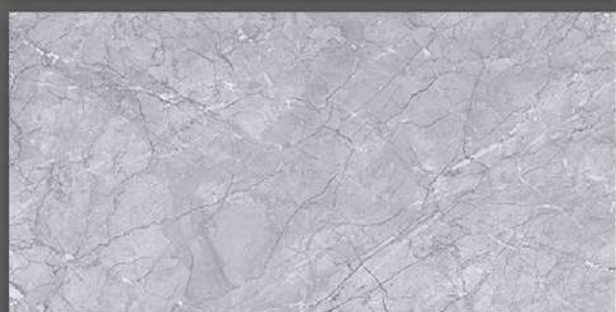
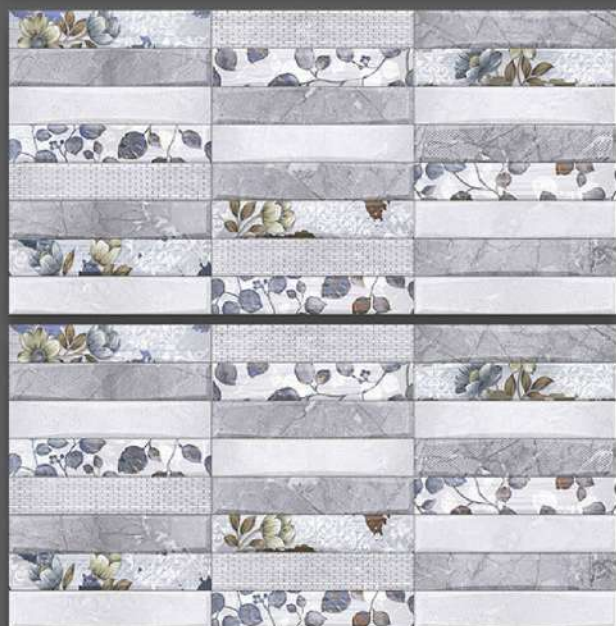
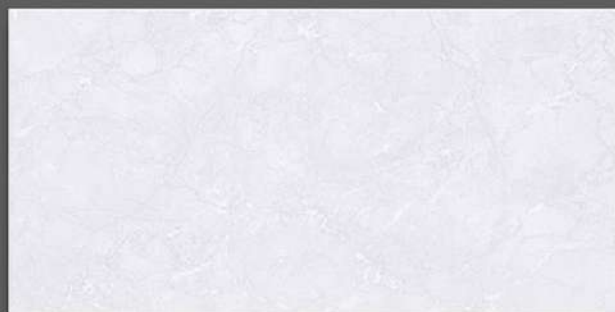
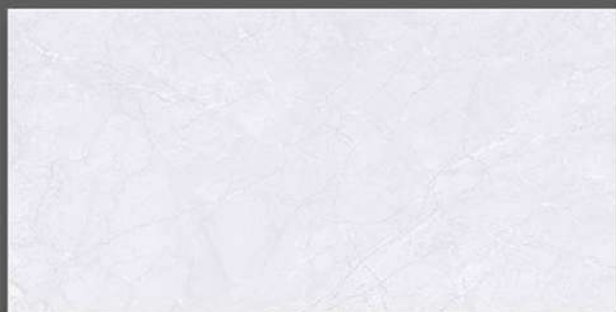
GLOSSY SERIES



1089_LT-(Random)
1089_HL1-(Punch)
1089_DK-(Random)

1089_LT-(Random)
1089_HL1-(Punch)
1089_DK-(Random)

GLOSSY SERIES



1090_LT-(Random)
1090_HL2-(Punch)
1090_DK-(Random)

1090_LT-(Random)
1090_HL2-(Punch)
1090_DK-(Random)

GLOSSY SERIES



NOVAC

CERAMIC

Committed to Quality



1091_LT-(Random)

1091_HL2-(Punch)

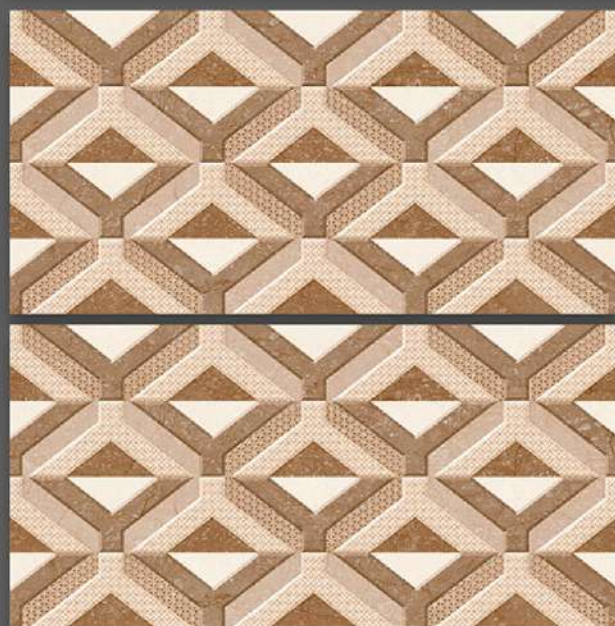
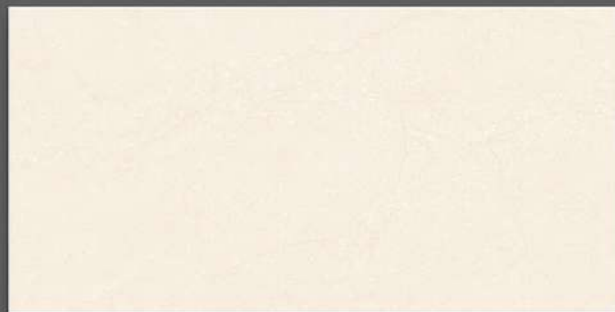
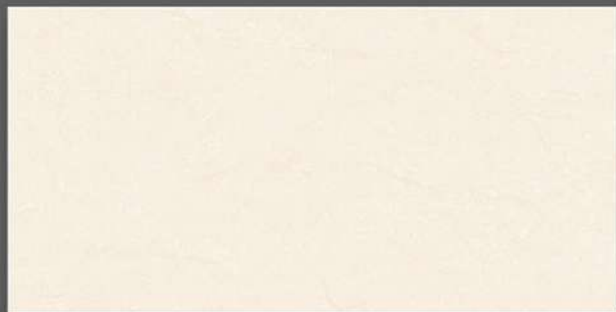
1091_LT-(Random)

1091_LT-(Random)

1091_HL2-(Punch)

1091_LT-(Random)

GLOSSY SERIES



1093_LT-(Random)
1093_HL1-(Punch)
1093_DK-(Random)

1093_LT-(Random)
1093_HL2-(Punch)
1093_DK-(Random)



NOVAC
CERAMIC
Committed to Quality

GLOSSY SERIES



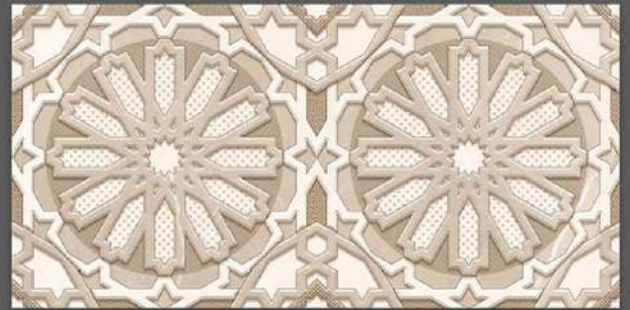
1095_LT-(Random)
1095_HL2-(Punch)
1095_DK-(Random)

1095_LT-(Random)
1095_HL2-(Punch)
1095_DK-(Random)



NOVAC
CERAMIC
Committed to Quality

GLOSSY SERIES



1096_LT-(Random)
1096_HL1-(Punch)
1096_DK-(Random)

1096_LT-(Random)
1096_HL2-(Punch)
1096_DK-(Random)

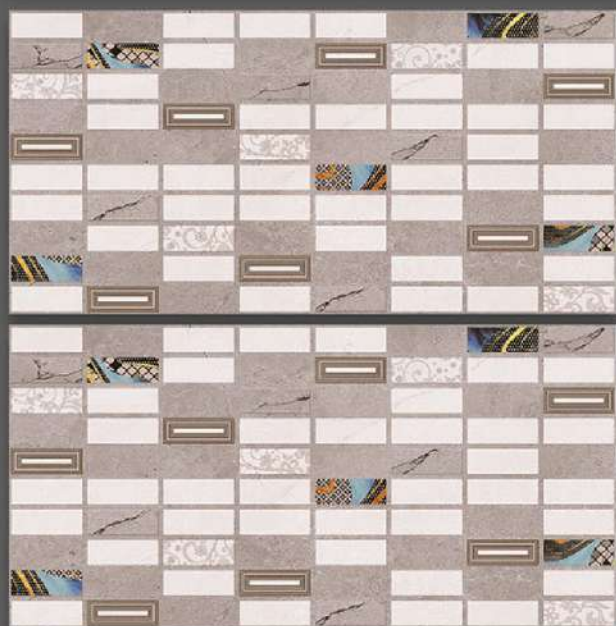
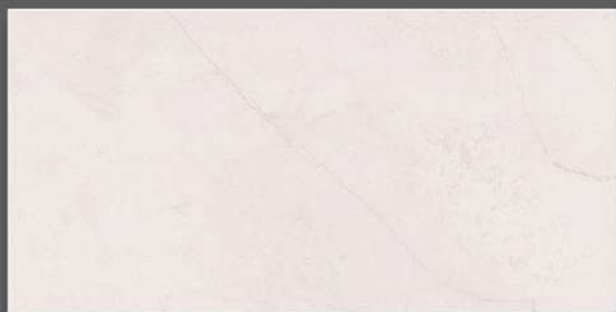
GLOSSY SERIES



NOVAC

CERAMIC

Committed to Quality



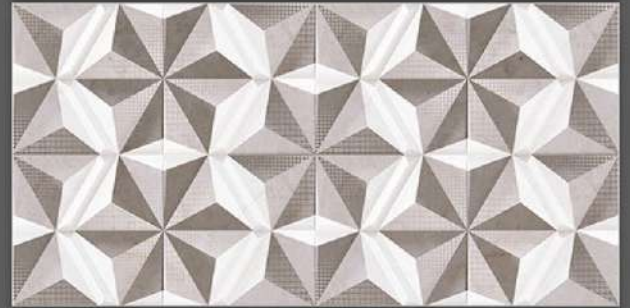
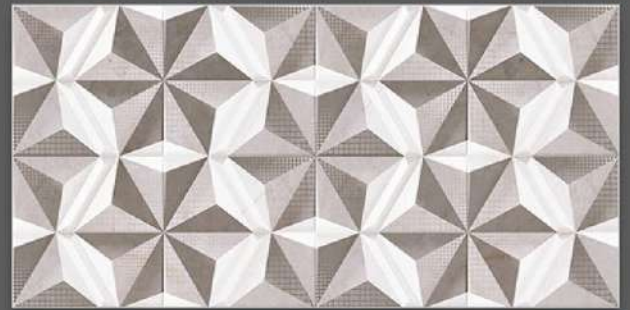
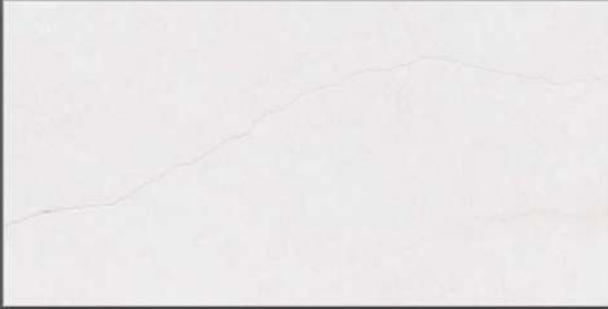
1097_LT-(Random)
1097_HL1-(Punch)
1097_DK-(Random)

1097_LT-(Random)
1097_HL2-(Punch)
1097_DK-(Random)



NOVAC
CERAMIC
Committed to Quality

GLOSSY SERIES



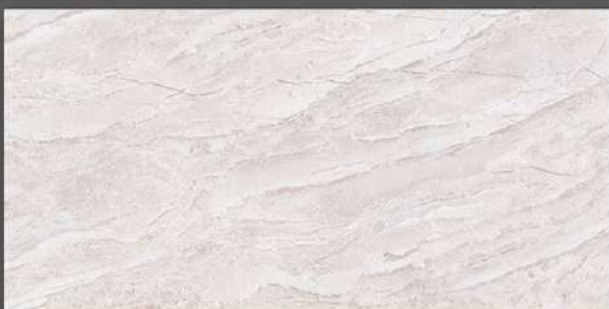
1099_LT-(Random)
1099_HL1-(Punch)
1099_DK-(Random)

1099_LT-(Random)
1099_HL2-(Punch)
1099_DK-(Random)

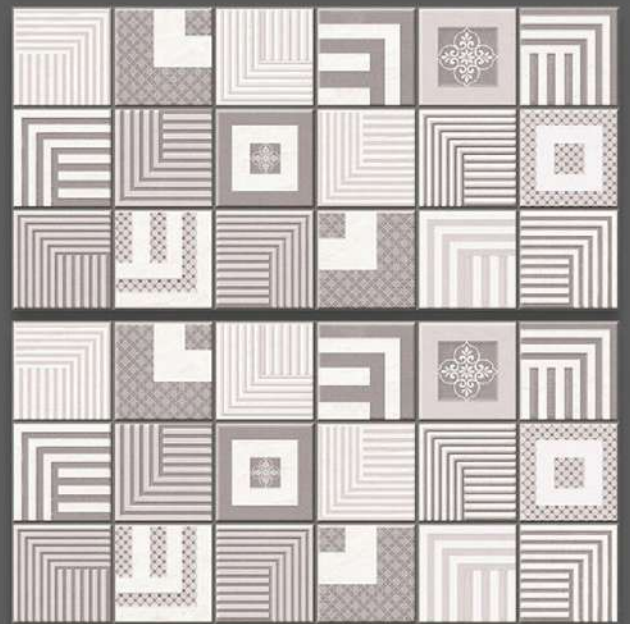


NOVAC
CERAMIC
Committed to Quality

GLOSSY SERIES



1100_LT-(Random)
1100_HL1-(Punch)
1100_DK-(Random)



1100_LT-(Random)
1100_HL2-(Punch)
1100_DK-(Random)



NOVAC
CERAMIC
Committed to Quality

GLOSSY SERIES



1105_LT-(Random)
1105_HL1-(Punch)
1105_LT-(Random)



1105_LT-(Random)
1105_HL2-(Punch)
1105_LT-(Random)



NOVAC
CERAMIC
Committed to Quality

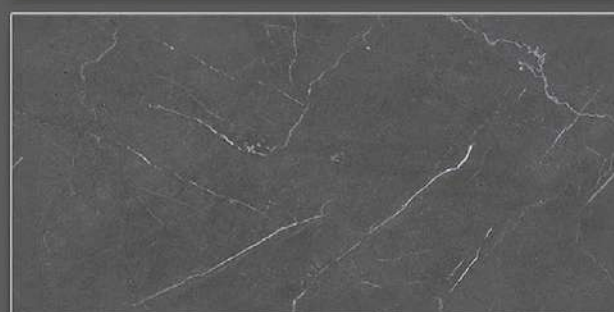
GLOSSY SERIES



1107_LT-(Punch)

1107_HL2-(Punch)

1107_DK-(Punch)



1108_LT-(continue/Plain)

1108_HL1-AB-(Continue/Plain)

1108_DK-(continue/Plain)

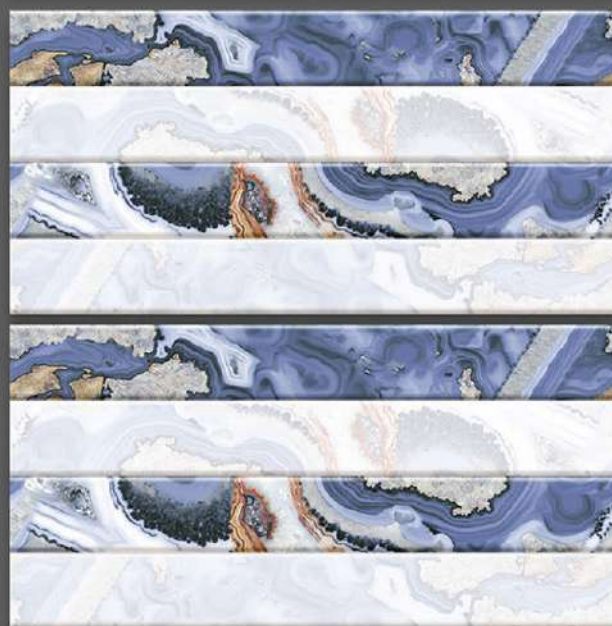
GLOSSY SERIES



NOVAC
CERAMIC
Committed to Quality



1109_LT-(continue)
1109_HL1-(Punch)
1109_DK-(continue)



1109_LT-(continue)
1109_HL2-(Punch)
1109_DK-(continue)



NOVAC
CERAMIC
Committed to Quality

GLOSSY SERIES



1111_LT-(Punch)
1111_HL1-AB-(Punch)
1111_DK-(Punch)



1112_LT-(Punch)
1112_HL1-AB-(Punch)
1112_DK-(Punch)

GLOSSY SERIES



NOVAC
CERAMIC
Committed to Quality



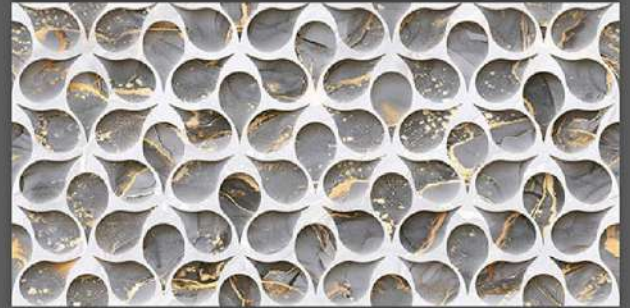
1116_LT-(Random)
1116_HL2-(Punch)
1116_DK-(Random)

1117_LT-(Random)
1117_HL1-(Punch)
1117_DK-(Random)



NOVAC
CERAMIC
Committed to Quality

GLOSSY SERIES



1118_LT-(Random)
1118_HL1-(Punch)
1118_DK-(Random)

1119_LT-(continue)
1119_HL1-(Punch)
1119_DK-(continue)



NOVAC
CERAMIC
Committed to Quality

GLOSSY SERIES



1122_LT-(Random)
1122_HL1-(Punch)
1122_DK-(Random)

1122_LT-(Random)
1122_HL2-(Punch)
1122_DK-(Random)



NOVAC
CERAMIC
Committed to Quality

GLOSSY SERIES



1125_LT-(Random)
1125_HL1-(Punch)
1125_DK-(Random)



1125_LT-(Random)
1125_HL2-(Punch)
1125_DK-(Random)

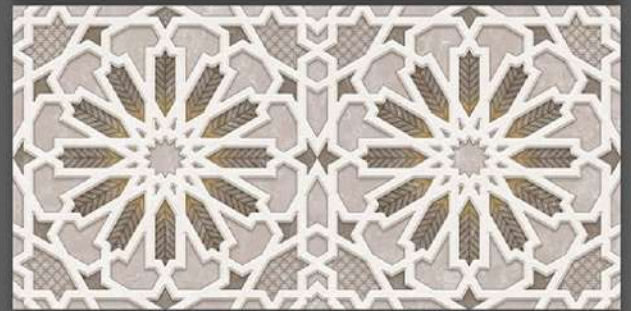
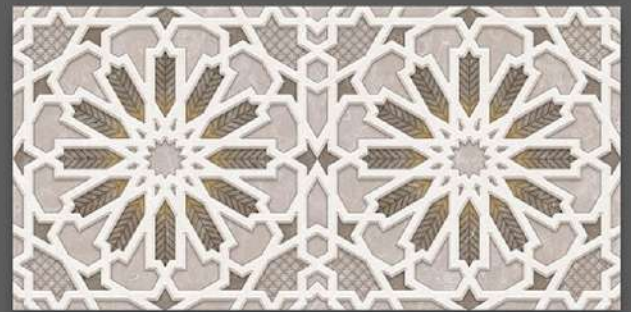


NOVAC
CERAMIC
Committed to Quality

GLOSSY SERIES



1126_LT-(Random)
1126_HL1-(Punch)
1126_DK-(Random)

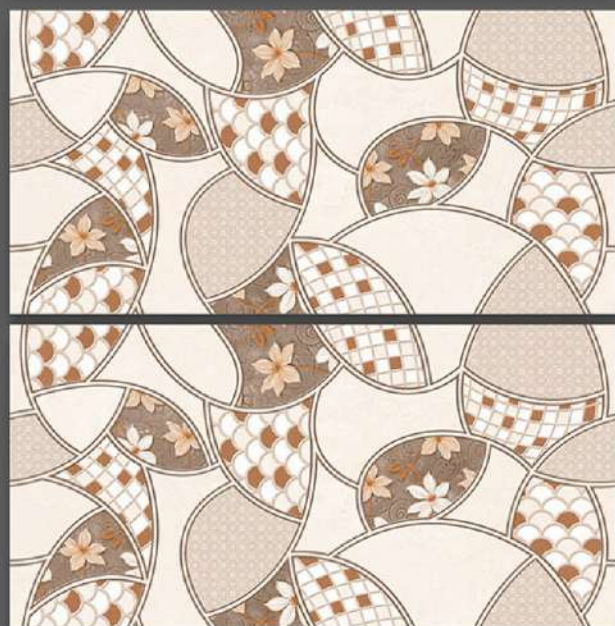
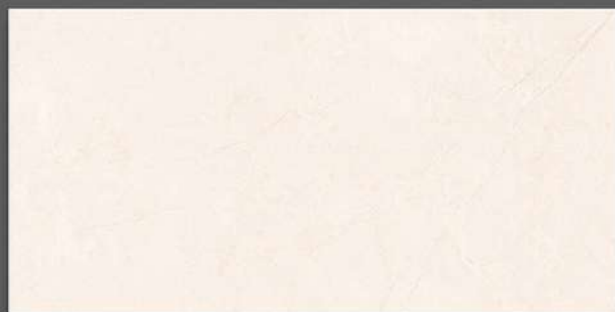
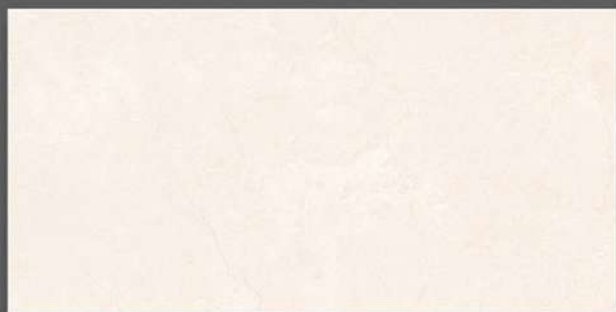


1126_LT-(Random)
1126_HL2-(Punch)
1126_DK-(Random)

GLOSSY SERIES



NOVAC
CERAMIC
Committed to Quality



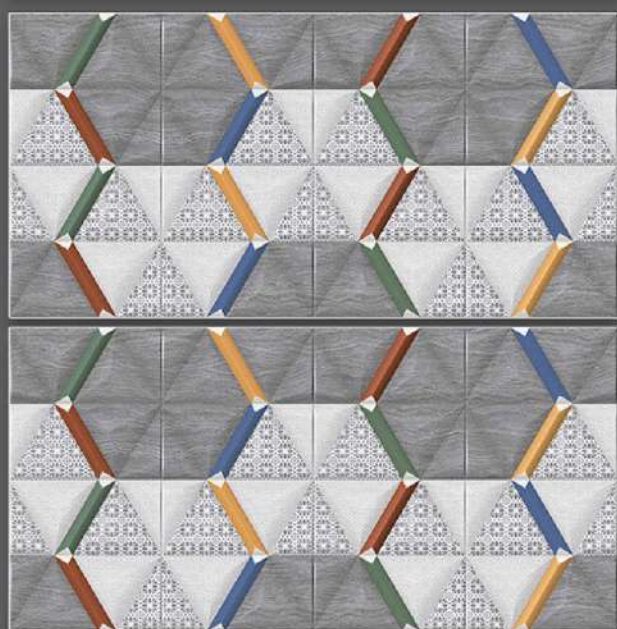
1127_LT-(Random)
1127_HL1-(Punch)
1127_DK-(Random)

1127_LT-(Random)
1127_HL2-(Punch)
1127_DK-(Random)

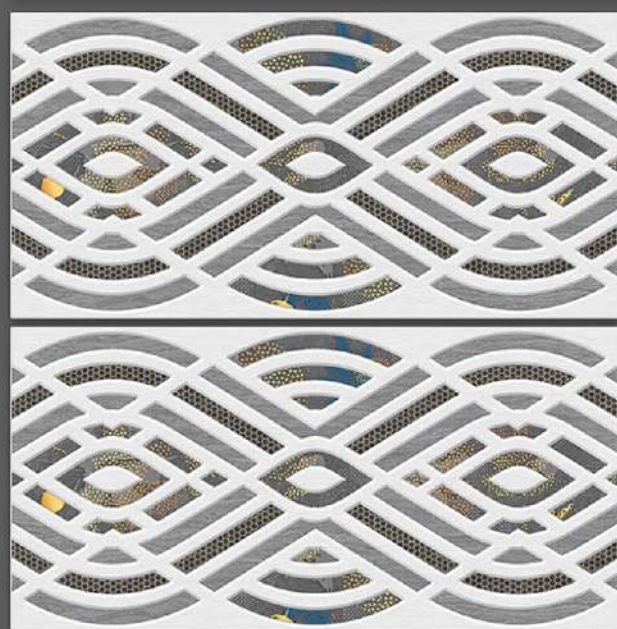


NOVAC
CERAMIC
Committed to Quality

GLOSSY SERIES



1128_LT-(Random)
1128_HL1-(Punch)
1128_DK-(Random)

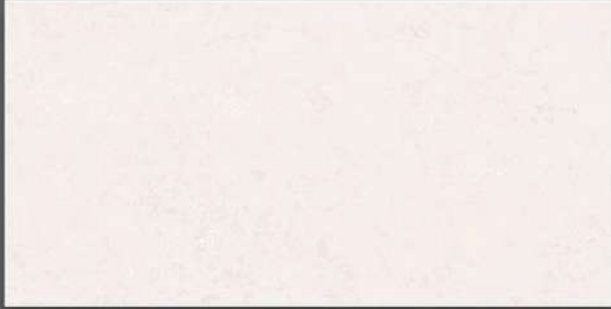


1128_LT-(Random)
1128_HL2-(Punch)
1128_DK-(Random)



NOVAC
CERAMIC
Committed to Quality

GLOSSY SERIES



1129_LT-(Random)
1129_HL1-(Punch)
1129_DK-(Random)

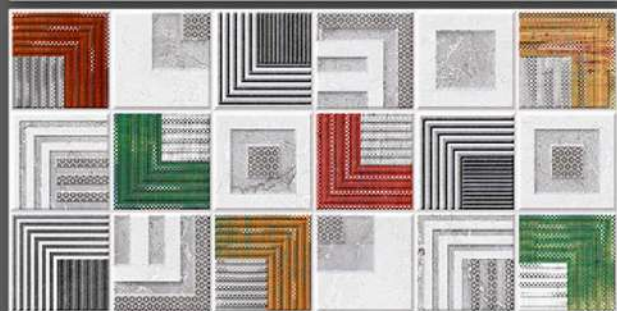
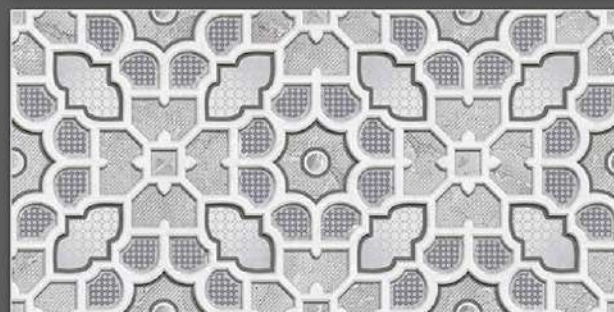
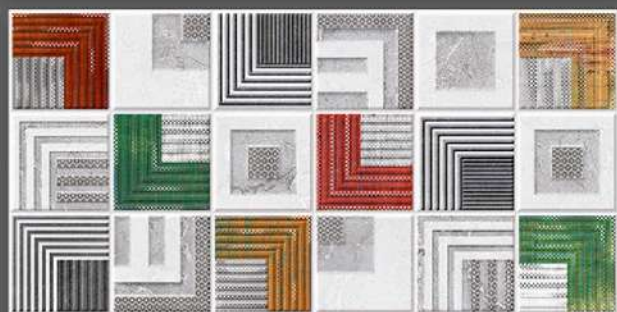


1129_LT-(Random)
1129_HL1-(Punch)
1129_DK-(Random)



NOVAC
CERAMIC
Committed to Quality

GLOSSY SERIES



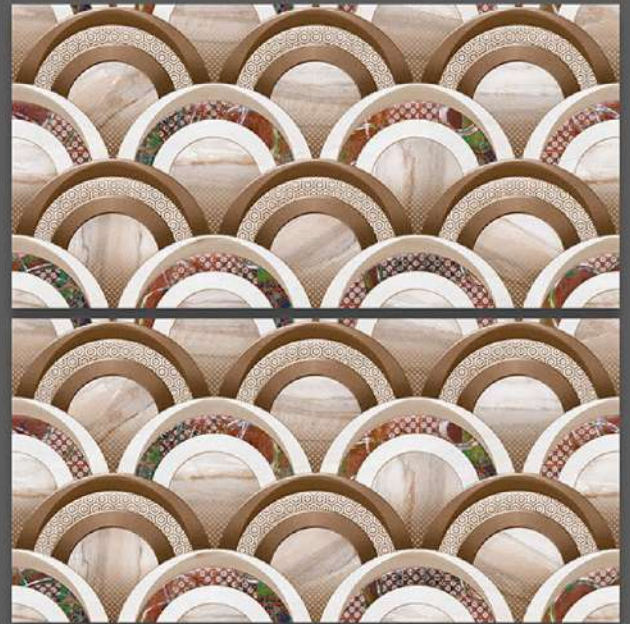
1130_LT-(Random)
1130_HL1-(Punch)
1130_DK-(Random)

1130_LT-(Random)
1130_HL2-(Punch)
1130_DK-(Random)



NOVAC
CERAMIC
Committed to Quality

GLOSSY SERIES



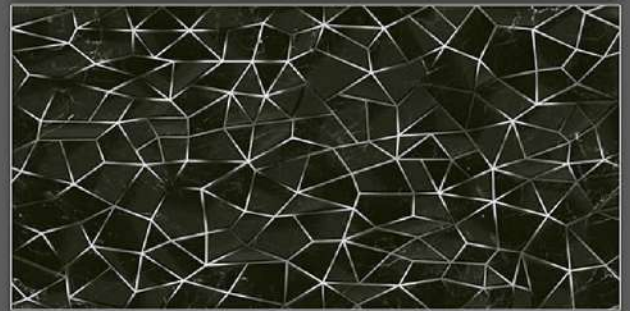
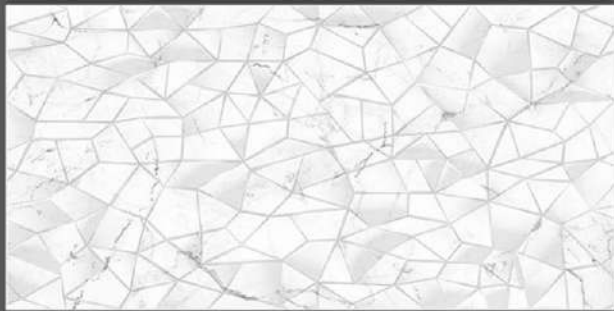
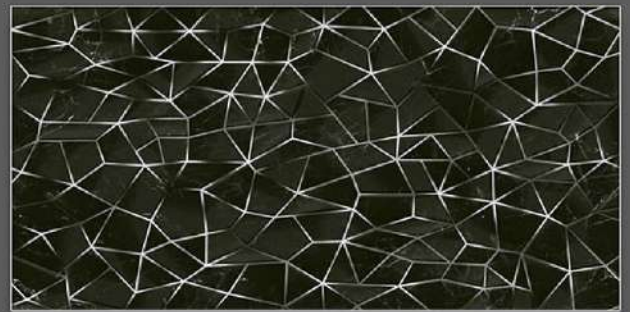
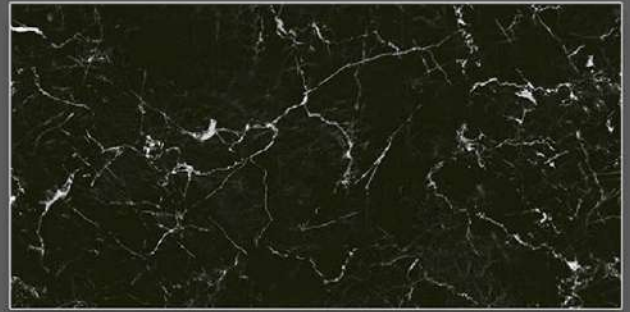
1131_LT-(Random)
1131_HL1-(Punch)
1131_LT-(Random)

1131_LT-(Random)
1131_HL2-(Punch)
1131_LT-(Random)



NOVAC
CERAMIC
Committed to Quality

GLOSSY SERIES



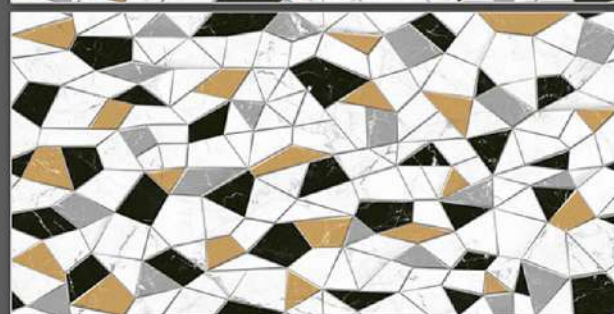
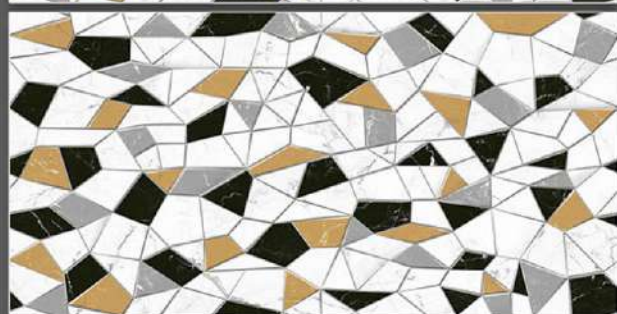
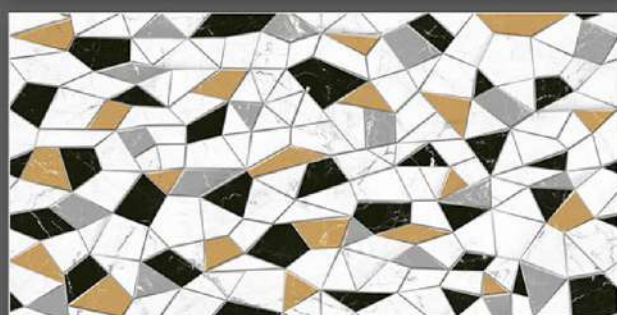
1132_LT-(Random)
1132_HL4-(Punch)
1132_LT-(Random)

1132_DK-(Random)
1132_HL3-(Punch)
1132_DK-(Random)



NOVAC
CERAMIC
Committed to Quality

GLOSSY SERIES



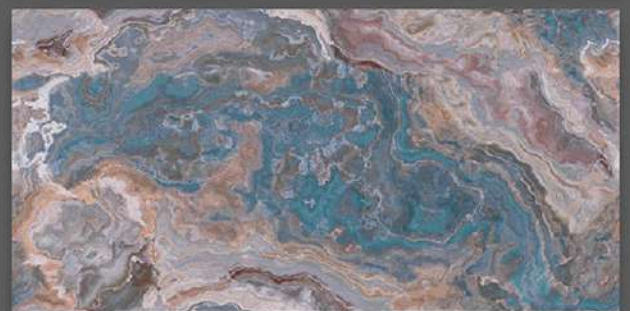
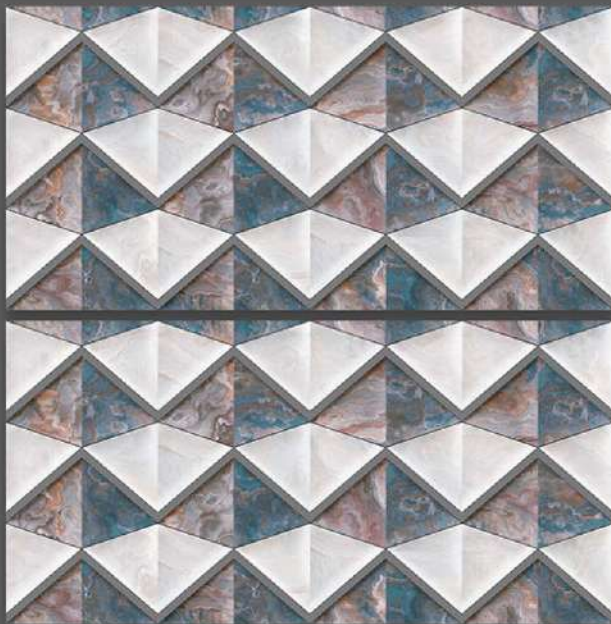
1132_LT-(Random)
1132_HL5-(Punch)
1132_DK-(Random)

1132_LT-(Random)
1132_HL5-(Punch)
1132_DK-(Random)



NOVAC
CERAMIC
Committed to Quality

GLOSSY SERIES



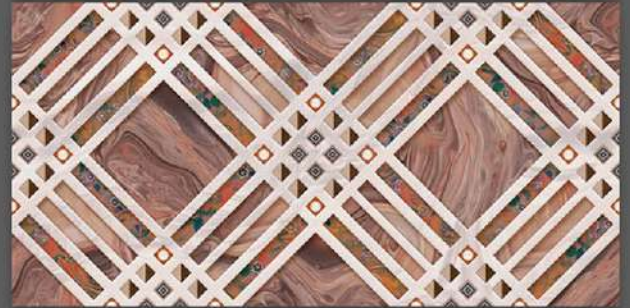
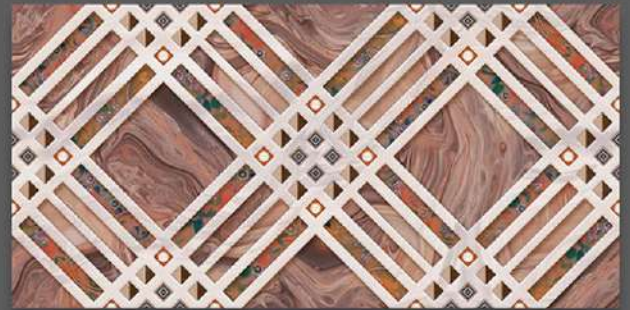
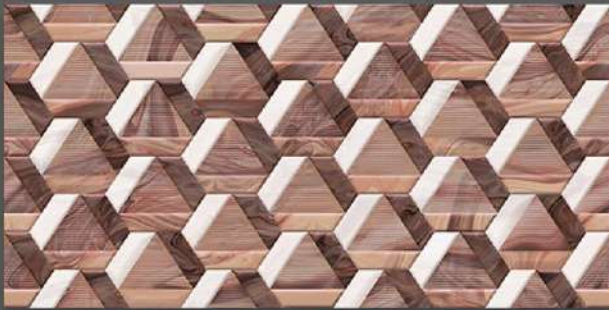
1134_LT-(continue)
1134_HL1-(Punch)
1134_DK-(continue)

1134_LT-(continue)
1134_HL2-(Punch)
1134_DK-(continue)



NOVAC
CERAMIC
Committed to Quality

GLOSSY SERIES



1135_LT-(continue)
1135_HL1-(Punch)
1135_DK-(continue)

1135_LT-(continue)
1135_HL2-(Punch)
1135_DK-(continue)



NOVAC CERAMIC LLP

At: Lalpar, Real Plaza - 1, Near Omkar Petroleum,
8-A, National Highway, Morbi - 363 642.

Cell: +91 97251 20510

www.novacceramic.com | info@novacceramic.com