



**NOVAC**

C E R A M I C

Committed to Quality



ALL IN ONE

**300**  
**X**<sub>mm</sub>  
**600**

DIGITAL WALL TILES



**NOVAC**  
CERAMIC  
Committed to Quality

# GLOSSY SERIES



1004\_LT-(Random)  
1004\_HL1-(Punch)  
1004\_DK-(Random)



1004\_LT-(Random)  
1004\_HL2-(Punch)  
1004\_DK-(Random)



**NOVAC**  
CERAMIC  
Committed to Quality

**GLOSSY SERIES**



- 1004\_LT-(Random)
- 1004\_Border-(Punch)
- 1004\_HL3-(Plain)
- 1004\_HL4-(Plain)
- 1004\_DK-(Random)

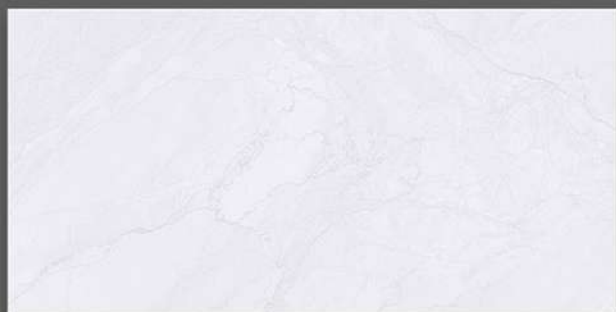


- 1004\_LT-(Random)
- 1004\_Border-(Punch)
- 1004\_HL5-(Plain)
- 1004\_HL6-(Plain)
- 1004\_DK-(Random)

# GLOSSY SERIES



**NOVAC**  
CERAMIC  
Committed to Quality



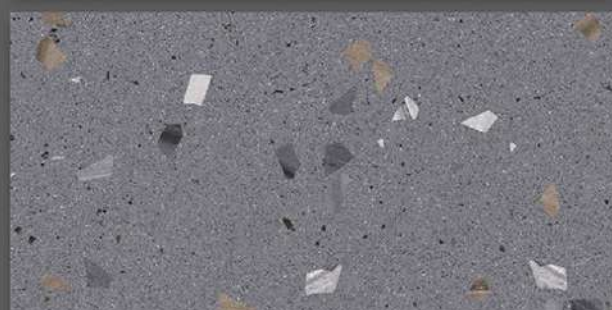
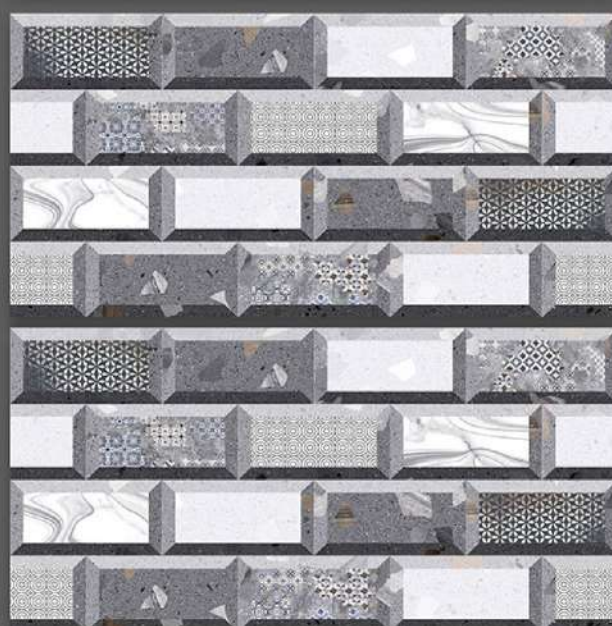
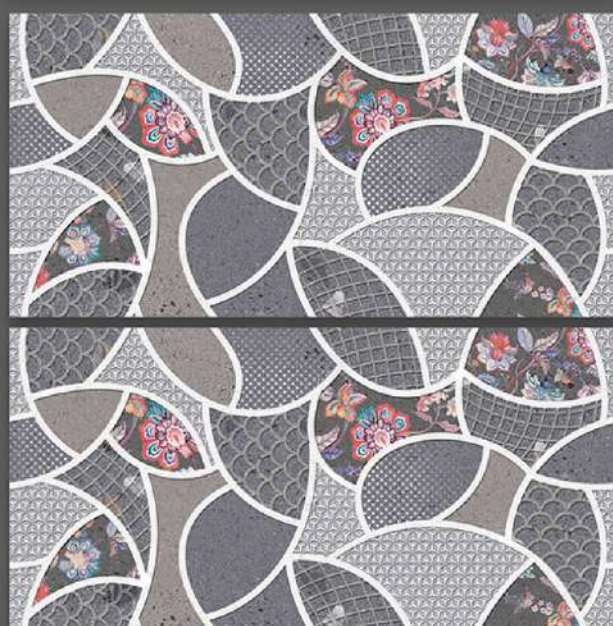
1004\_LT-(Random)  
1004\_HL7-AB-(Plain)  
1004\_DK-(Random)

1004\_LT-(Random)  
1004\_HL8-AB-(Plain)  
1004\_DK-(Random)



**NOVAC**  
CERAMIC  
Committed to Quality

# GLOSSY SERIES



1005\_LT-(Random)  
1005\_HL1-(Punch)  
1005\_DK-(Random)

1005\_LT-(Random)  
1005\_HL2-(Punch)  
1005\_DK-(Random)

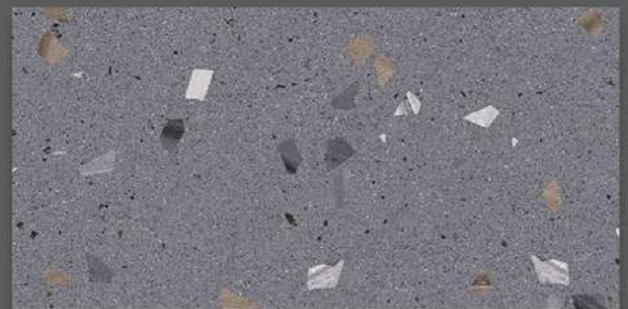


**NOVAC**  
CERAMIC  
Committed to Quality

**GLOSSY SERIES**



- 1005\_LT-(Random)
- 1005\_Border-(Punch)
- 1005\_HL3-(Plain)
- 1005\_HL4-(Plain)
- 1005\_DK-(Random)



- 1005\_LT-(Random)
- 1005\_Border-(Punch)
- 1005\_HL5-(Plain)
- 1005\_DK-(Random)

# GLOSSY SERIES



**NOVAC**  
CERAMIC  
Committed to Quality



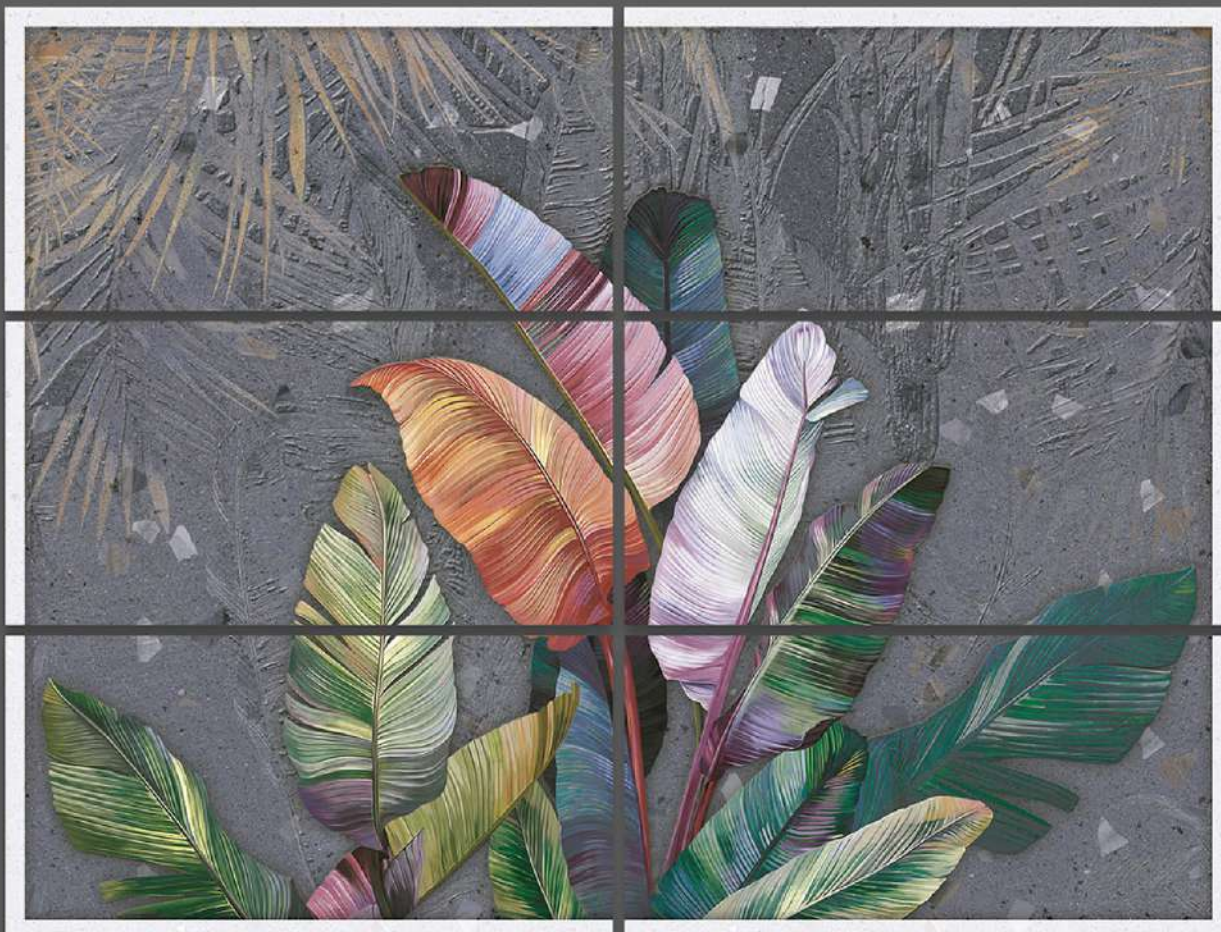
1005\_LT-(Random)  
1005\_DK-(Random)

1005\_LT-(Random)  
1005\_HL6-ABC-(Plain)

# GLOSSY SERIES



**NOVAC**  
CERAMIC  
Committed to Quality



1005\_Poster-1-A-(Plain)  
1005\_Poster-1-C-(Plain)  
1005\_Poster-1-E-(Plain)  
1005\_DK-(Random)

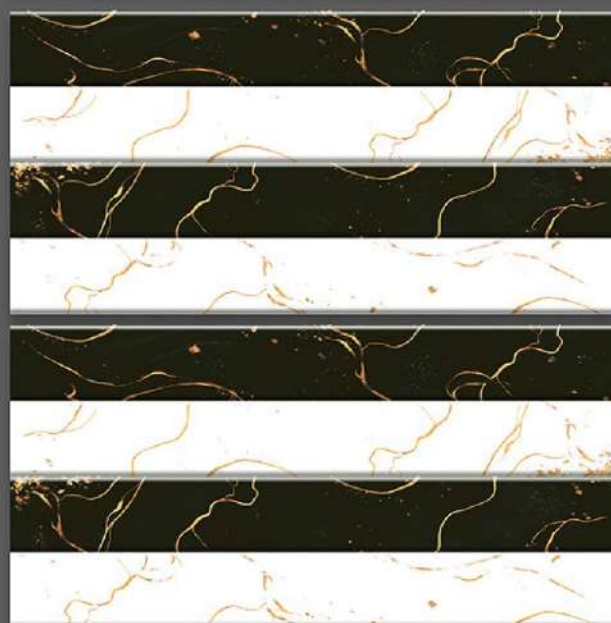
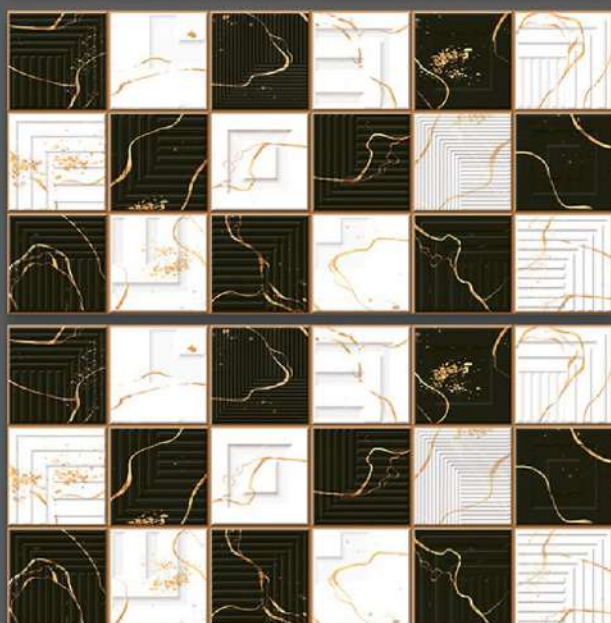
1005\_Poster-1-B-(Plain)  
1005\_Poster-1-D-(Plain)  
1005\_Poster-1-F-(Plain)  
1005\_DK-(Random)





**NOVAC**  
CERAMIC  
Committed to Quality

# GLOSSY SERIES



1015\_LT-(continue)  
1015\_HL1-(Punch)  
1015\_DK-(continue)

1015\_LT-(continue)  
1015\_HL2-(Punch)  
1015\_DK-(continue)



**NOVAC**  
CERAMIC  
Committed to Quality

**GLOSSY SERIES**



- 1015\_LT-(continue)
- 1015\_Border-(Punch)
- 1015\_KI-1-(Plain)
- 1015\_KI-2-(Plain)
- 1015\_DK-(continue)

- 1015\_LT-(continue)
- 1015\_Border-(Punch)
- 1015\_KI-3-(Plain)
- 1015\_HL3-(Plain)
- 1015\_DK-(continue)



**NOVAC**  
CERAMIC  
Committed to Quality

# GLOSSY SERIES



1015\_HL4-ABC-(Plain)  
1015\_DK-(continue)



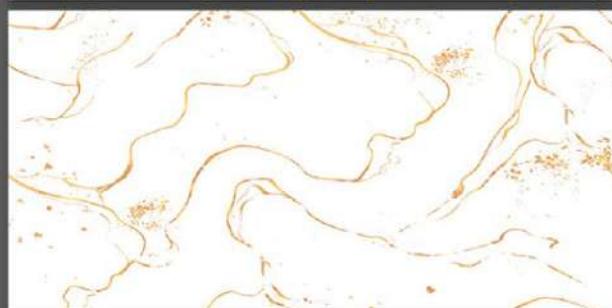
1015\_HL5-ABC-(Plain)  
1015\_DK-(continue)





**NOVAC**  
CERAMIC  
Committed to Quality

# GLOSSY SERIES



1015\_LT-(continue)  
1015\_DK-(continue)



1015\_Poster-1-ABCD-(Plain)

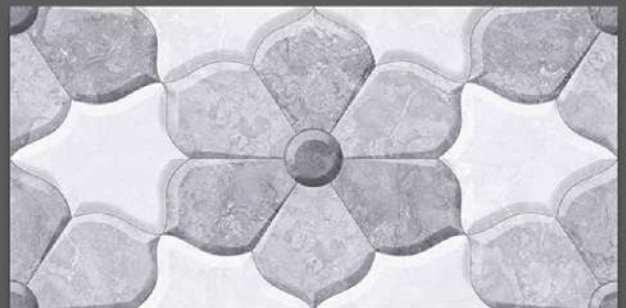


**NOVAC**  
CERAMIC  
Committed to Quality

# GLOSSY SERIES



1040\_LT-(Random)  
1040\_HL1-(Punch)  
1040\_DK-(Random)



1040\_LT-(Random)  
1040\_HL2-(Punch)  
1040\_DK-(Random)



**NOVAC**  
CERAMIC  
Committed to Quality

**GLOSSY SERIES**



- 1040\_LT-(Random)
- 1040\_Border-(Punch)
- 1040\_HL3-(Plain)
- 1040\_HL4-(Plain)
- 1040\_DK-(Random)

- 1040\_LT-(Random)
- 1040\_Border-(Punch)
- 1040\_HL5-(Plain)
- 1040\_HL6-(Plain)
- 1040\_DK-(Random)

# GLOSSY SERIES



1040\_LT-(Random)  
1040\_Poster-1-A-(Plain)  
1040\_Poster-1-C-(Plain)  
1040\_DK-(Random)

1040\_LT-(Random)  
1040\_Poster-1-B-(Plain)  
1040\_Poster-1-D-(Plain)  
1040\_DK-(Random)

# GLOSSY SERIES



**NOVAC**  
CERAMIC  
Committed to Quality



1094\_LT-(Random)  
1094\_HL1-(Punch)  
1094\_HL2-(Punch)  
1094\_DK-(Random)

1094\_LT-(Random)  
1094\_HL3-(Plain)  
1094\_DK-(Random)





**NOVAC**  
CERAMIC  
Committed to Quality

**GLOSSY SERIES**



1094\_LT-(Random)  
1094\_Border-(Punch)  
1094\_HL4-(Plain)  
1094\_HL5-(Plain)  
1094\_DK-(Random)



1094\_LT-(Random)  
1094\_Border-(Punch)  
1094\_HL6-(Plain)  
1094\_DK-(Random)



**NOVAC**  
CERAMIC  
Committed to Quality

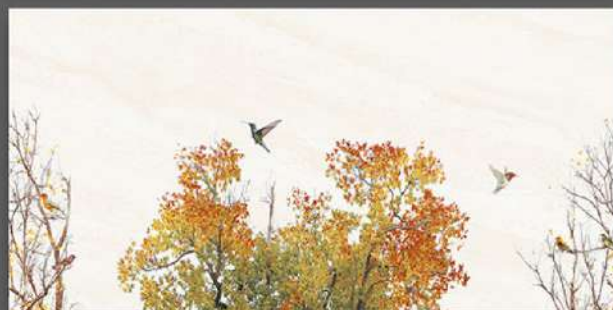
# GLOSSY SERIES



1094\_LT-(Random)  
1094\_HL7-AB-(Plain)  
1094\_DK-(Random)

1094\_LT-(Random)  
1094\_HL8-AB-(Plain)  
1094\_DK-(Random)

# GLOSSY SERIES



1094\_LT-(Random)  
1094\_HL9-AB-(Plain)  
1094\_DK-(Random)

1094\_LT-(Random)  
1094\_HL9-AB-(Plain)  
1094\_DK-(Random)

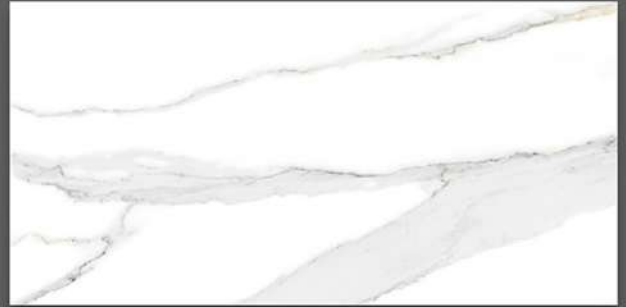


**NOVAC**  
CERAMIC  
Committed to Quality

# GLOSSY SERIES



2007\_LT-(Random)  
2007\_HL1-(Punch)



2007\_LT-(Random)  
2007\_HL2-(Punch)



**NOVAC**  
CERAMIC  
Committed to Quality

# GLOSSY SERIES



2007\_LT-(Random)  
2007\_Border-(Punch)  
2007\_HL3-(Plain)  
2007\_HL4-(Plain)

2007\_LT-(Random)  
2007\_Border-(Punch)  
2007\_HL5-(Plain)



**NOVAC**  
CERAMIC  
Committed to Quality

**GLOSSY SERIES**



2007\_LT-(Random)  
2007\_HL6-AB-(Plain)

2007\_LT-(Random)  
2007\_Poster1-ABC-(Plain)



**NOVAC**  
CERAMIC  
Committed to Quality

GLOSSY SERIES



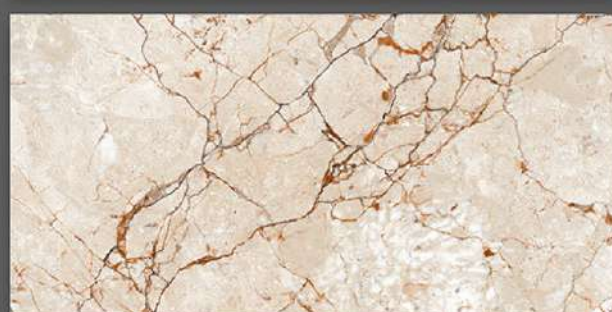
2007\_Poster-1-A-(Plain)  
2007\_Poster-1-C-(Plain)  
2007\_Poster-1-E-(Plain)  
2007\_Poster-1-G-(Plain)

2007\_Poster-1-B-(Plain)  
2007\_Poster-1-D-(Plain)  
2007\_Poster-1-F-(Plain)  
2007\_Poster-1-H-(Plain)



**NOVAC**  
CERAMIC  
Committed to Quality

# GLOSSY SERIES



2019\_LT-(Random)  
2019\_HL1-(Punch)  
2019\_DK-(Random)

2019\_LT-(Random)  
2019\_HL2-(Punch)  
2019\_DK-(Random)





**NOVAC**  
CERAMIC  
Committed to Quality

**GLOSSY SERIES**



2019\_LT-(Random)  
2019\_Border-(Punch)  
2019\_HL3-(Plain)  
2019\_HL4-(Plain)  
2019\_DK-(Random)

2019\_LT-(Random)  
2019\_Border-(Punch)  
2019\_HL5-(Plain)  
2019\_DK-(Random)

# GLOSSY SERIES



**NOVAC**  
CERAMIC  
Committed to Quality



2019\_LT-(Random)  
2019\_HL6-AB-(Plain)  
2019\_DK-(Random)



2019\_Poster-1-ABCD-(Plain)

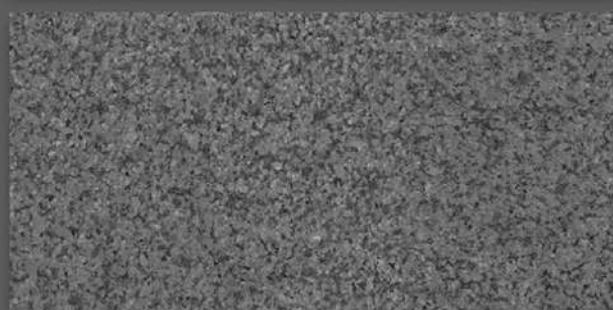
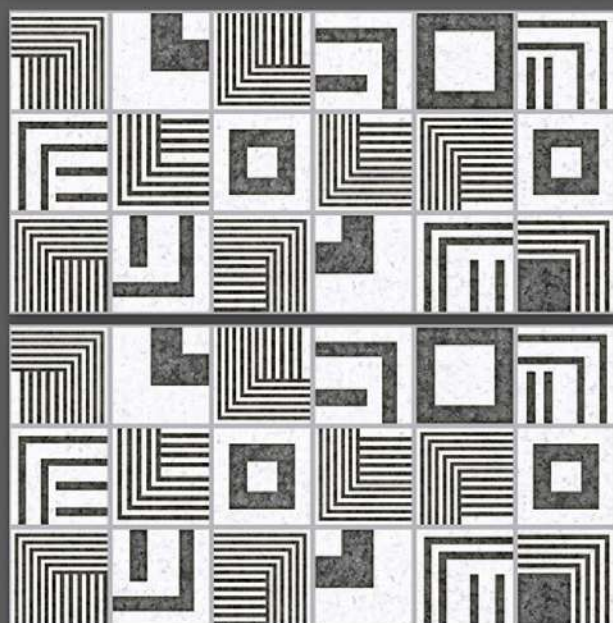
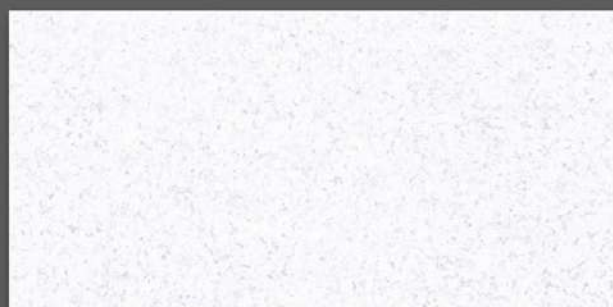


**NOVAC**

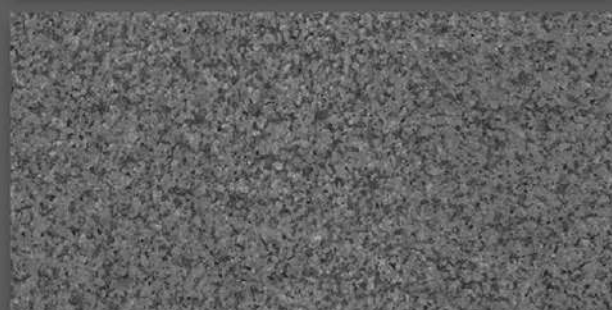
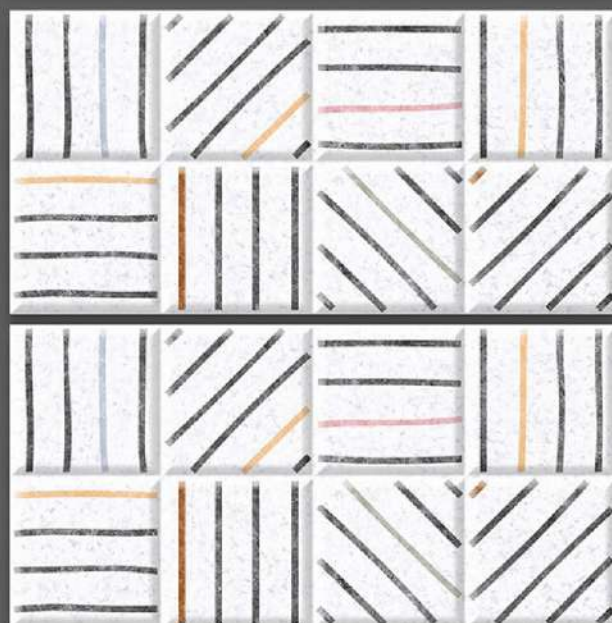
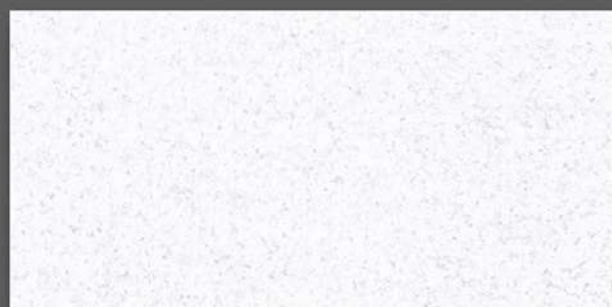
CERAMIC

Committed to Quality

# GLOSSY SERIES



2020\_LT-(Plain)  
2020\_HL1-(Punch)  
2020\_DK-(Plain)



2020\_LT-(Plain)  
2020\_HL2-(Punch)  
2020\_DK-(Plain)

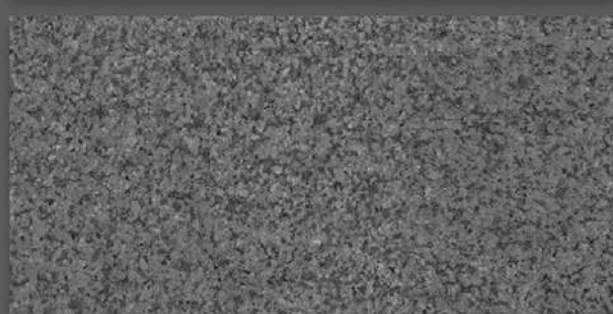


**NOVAC**

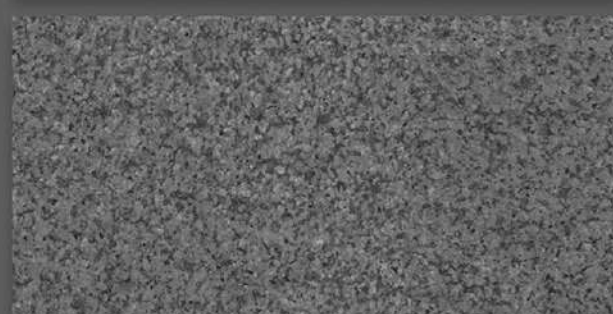
CERAMIC

Committed to Quality

# GLOSSY SERIES



2020\_LT-(Plain)  
2020\_Border-(Punch)  
2020\_HL3-(Plain)  
2020\_HL4-(Plain)  
2020\_DK-(Plain)

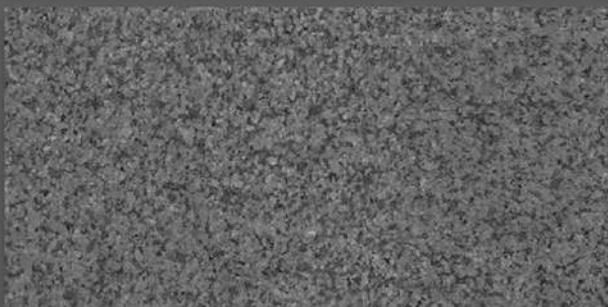


2020\_LT-(Plain)  
2020\_Border-(Punch)  
2020\_HL5-(Plain)  
2020\_DK-(Plain)

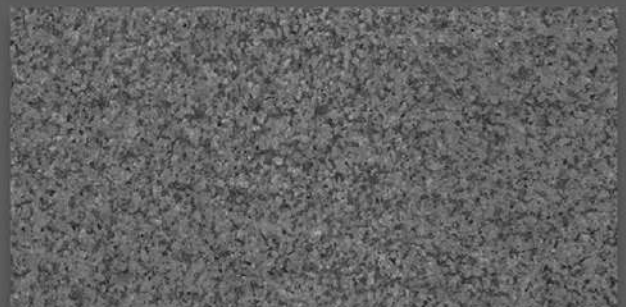


**NOVAC**  
CERAMIC  
Committed to Quality

**GLOSSY SERIES**



2020\_LT-(Plain)  
2020\_HL6-AB-(Plain)  
2020\_DK-(Plain)



2020\_LT-(Plain)  
2020\_HL7-AB-(Plain)  
2020\_DK-(Plain)



**NOVAC**  
CERAMIC  
Committed to Quality

# GLOSSY SERIES



2032\_LT-(Random)  
2032\_HL1-(Punch)  
2032\_DK-(Random)

2032\_LT-(Random)  
2032\_HL2-(Punch)  
2032\_DK-(Random)



**NOVAC**  
CERAMIC  
Committed to Quality

**GLOSSY SERIES**



2032\_LT-(Random)  
2032\_Border-(Punch)  
2032\_HL3-(Plain)  
2032\_HL4-(Plain)  
2032\_DK-(Random)

2032\_LT-(Random)  
2032\_Border-(Punch)  
2032\_HL5-(Plain)  
2032\_DK-(Random)



**NOVAC**  
CERAMIC  
Committed to Quality

# GLOSSY SERIES



2032\_LT-(Random)  
2032\_HL6-AB-(Plain)  
2032\_DK-(Random)

2032\_LT-(Random)  
2032\_HL7-(Punch)  
2032\_DK-(Random)



GLOSSY SERIES

  
**NOVAC**  
CERAMIC  
Committed to Quality



2032\_Poster-1-A-(Plain)  
2032\_Poster-1-C-(Plain)  
2032\_Poster-1-E-(Plain)  
2032\_LT-(Random)

2032\_Poster-1-B-(Plain)  
2032\_Poster-1-D-(Plain)  
2032\_Poster-1-F-(Plain)  
2032\_DK-(Random)

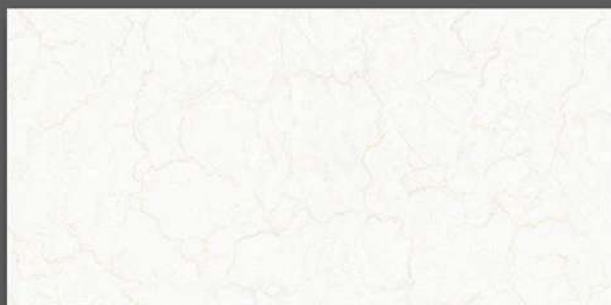
[www.novaccerceramic.com](http://www.novaccerceramic.com)

300x600 mm  
**DIGITAL**  
**WALL TILES**

# GLOSSY SERIES



**NOVAC**  
CERAMIC  
Committed to Quality



2041\_LT-(Random)  
2041\_HL1-(Punch)  
2041\_DK-(Random)

2041\_LT-(Random)  
2041\_HL3-(Punch)  
2041\_DK-(Random)

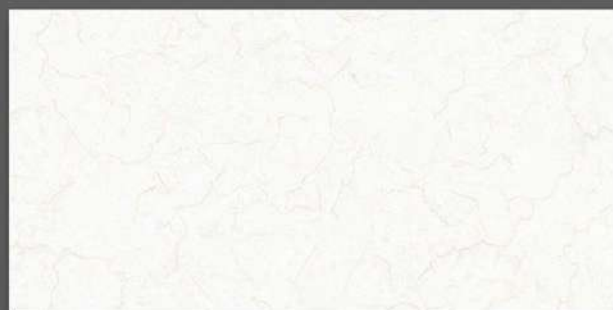


**NOVAC**

CERAMIC

Committed to Quality

# GLOSSY SERIES



2041\_LT-(Random)  
2041\_Border-(Punch)  
2041\_HL4-(Plain)  
2041\_HL5-(Plain)  
2041\_DK-(Random)

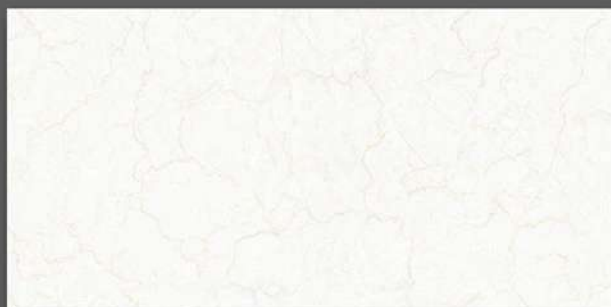


2041\_LT-(Random)  
2041\_Border-(Punch)  
2041\_HL6-(Plain)  
2041\_DK-(Random)



**NOVAC**  
CERAMIC  
Committed to Quality

# GLOSSY SERIES



2041\_LT-(Random)  
2041\_HL7-AB-(Plain)  
2041\_DK-(Random)

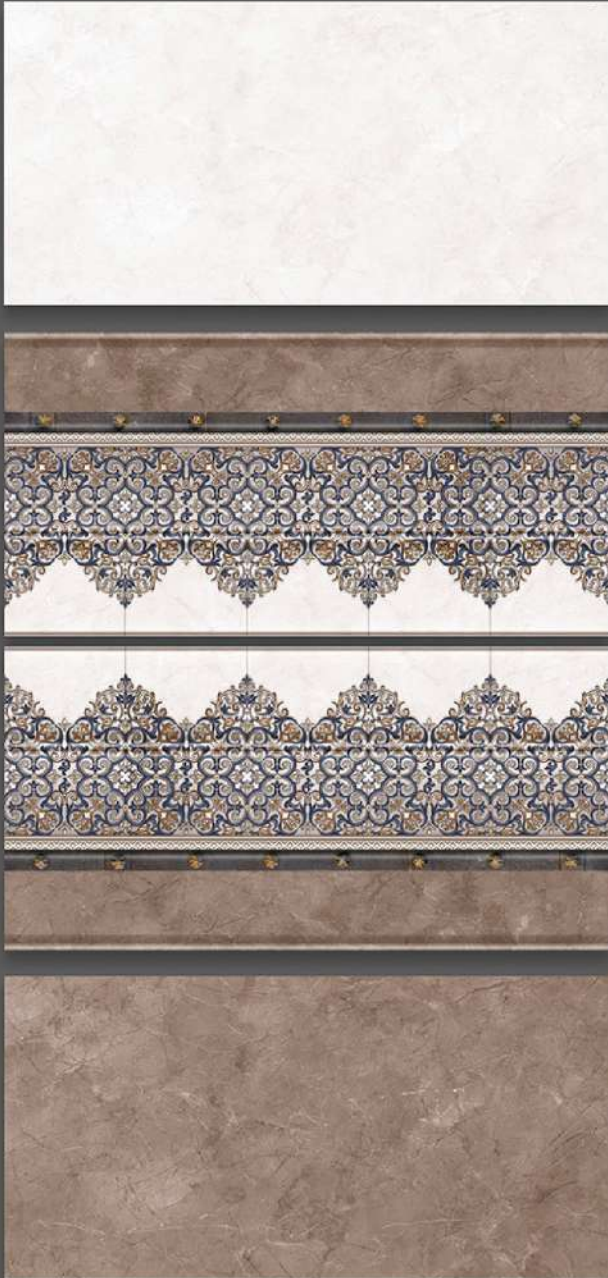


2041\_LT-(Random)  
2041\_HL8-AB-(Plain)  
2041\_DK-(Random)

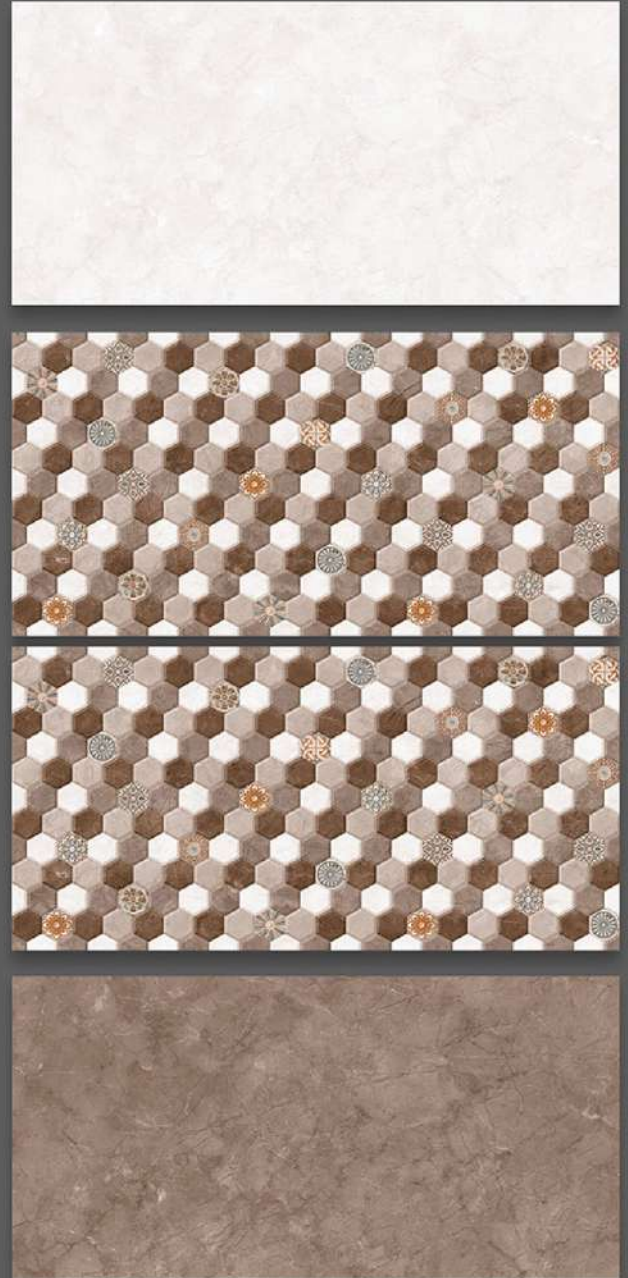


**NOVAC**  
CERAMIC  
Committed to Quality

# GLOSSY SERIES



2120\_LT-(Random)  
2120\_HL1-(Punch)  
2120\_DK-(Random)



2120\_LT-(Random)  
2120\_HL2-(Punch)  
2120\_DK-(Random)



**NOVAC**  
CERAMIC  
Committed to Quality

# GLOSSY SERIES



2120\_LT-(Random)  
2120\_Border-(Punch)  
2120\_HL3-(Plain)  
2120\_HL4-(Plain)  
2120\_DK-(Random)

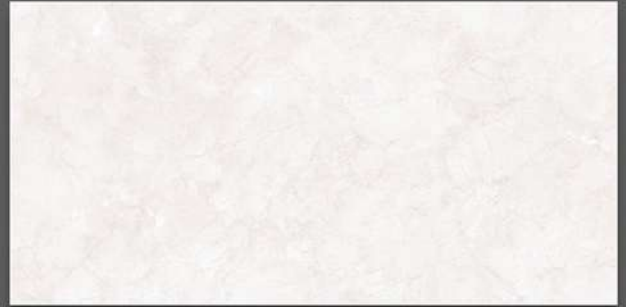
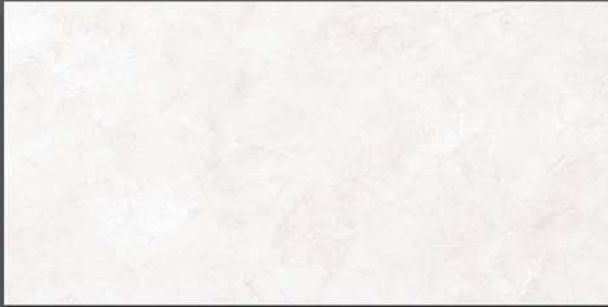


2120\_LT-(Random)  
2120\_Border-(Punch)  
2120\_HL5-(Plain)  
2120\_DK-(Random)



**NOVAC**  
CERAMIC  
Committed to Quality

# GLOSSY SERIES



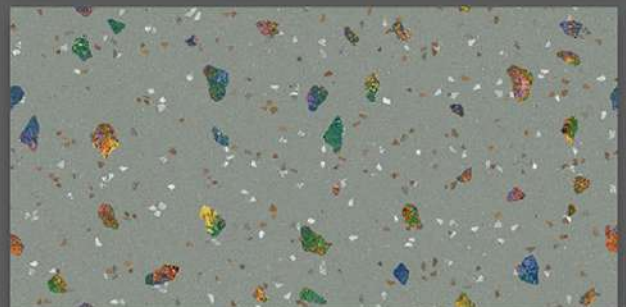
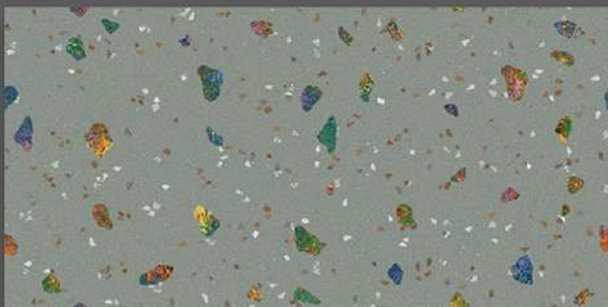
2120\_LT-(Random)  
2120\_HL6-(Plain)  
2120\_DK-(Random)

2120\_LT-(Random)  
2120\_HL7-ABC-(Plain)



**NOVAC**  
CERAMIC  
Committed to Quality

# GLOSSY SERIES



3001\_LT-(continue)  
3001\_HL1-(Punch)  
3001\_DK-(continue)

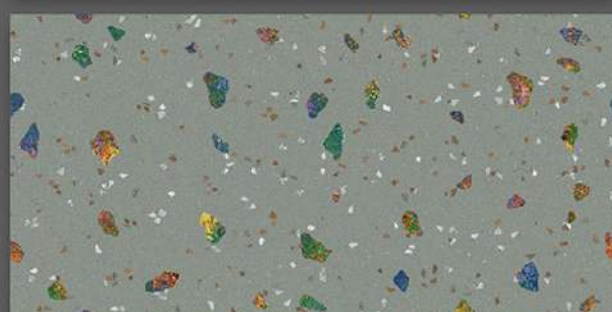
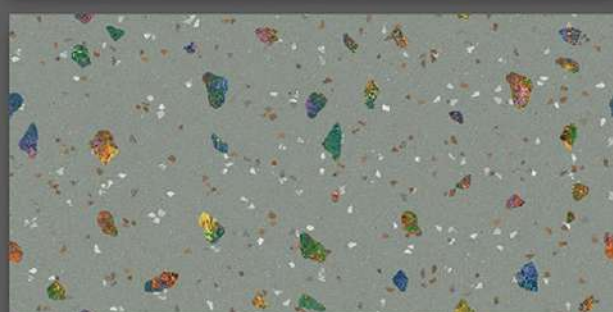
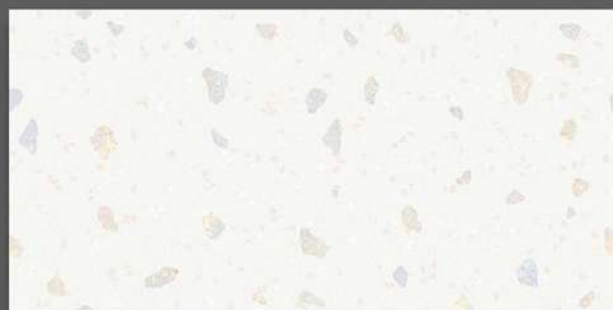
3001\_LT-(continue)  
3001\_HL1-(Punch)  
3001\_DK-(continue)





**NOVAC**  
CERAMIC  
Committed to Quality

**GLOSSY SERIES**



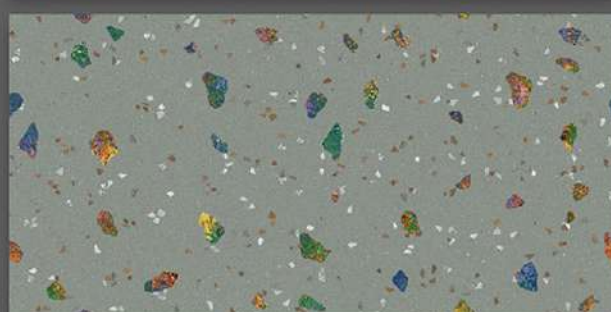
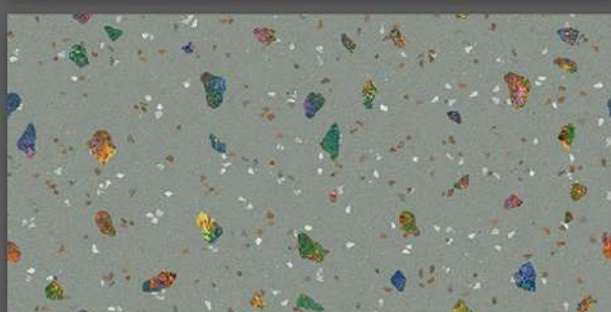
3001\_LT-(continue)  
3001\_Border-(Punch)  
3001\_HL2-(Plain)  
3001\_HL3-(Plain)  
3001\_DK-(continue)

3001\_LT-(continue)  
3001\_Border-(Punch)  
3001\_HL4-(Plain)  
3001\_DK-(continue)

# GLOSSY SERIES



**NOVAC**  
CERAMIC  
Committed to Quality



3001\_LT-(continue)  
3001\_HL5-AB-(Plain)  
3001\_DK-(continue)

3001\_LT-(continue)  
3001\_HL6-AB-(Plain)  
3001\_DK-(continue)

GLOSSY SERIES



3001\_Poster-1-A-(Plain)  
3001\_Poster-1-C-(Plain)  
3001\_Poster-1-E-(Plain)  
3001\_Poster-1-G-(Plain)

3001\_Poster-1-B-(Plain)  
3001\_Poster-1-D-(Plain)  
3001\_Poster-1-F-(Plain)  
3001\_Poster-1-H-(Plain)



## **NOVAC CERAMIC LLP**

At: Lalpar, Real Plaza - 1, Near Omkar Petroleum,  
8-A, National Highway, Morbi - 363 642.

Cell: +91 97251 20510

[www.novacceramic.com](http://www.novacceramic.com) | [info@novacceramic.com](mailto:info@novacceramic.com)