



**NOVAC**

C E R A M I C

Committed to Quality

**OUTDOOR**



**600x600mm**

**20MM**



**ARDESIA PISTA**





**ARDESIA SAND**





**ARDESIA SILVER**





**ARDESIA VERDE**





**ARDESIA COTTO**





**ARDESIA BLACK**





**CALCAREA GREY**







**FOSSILIA GREY**





**FOSSILIA LEMON**



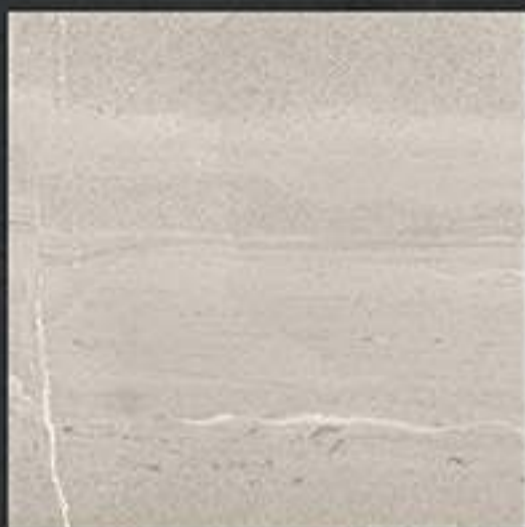


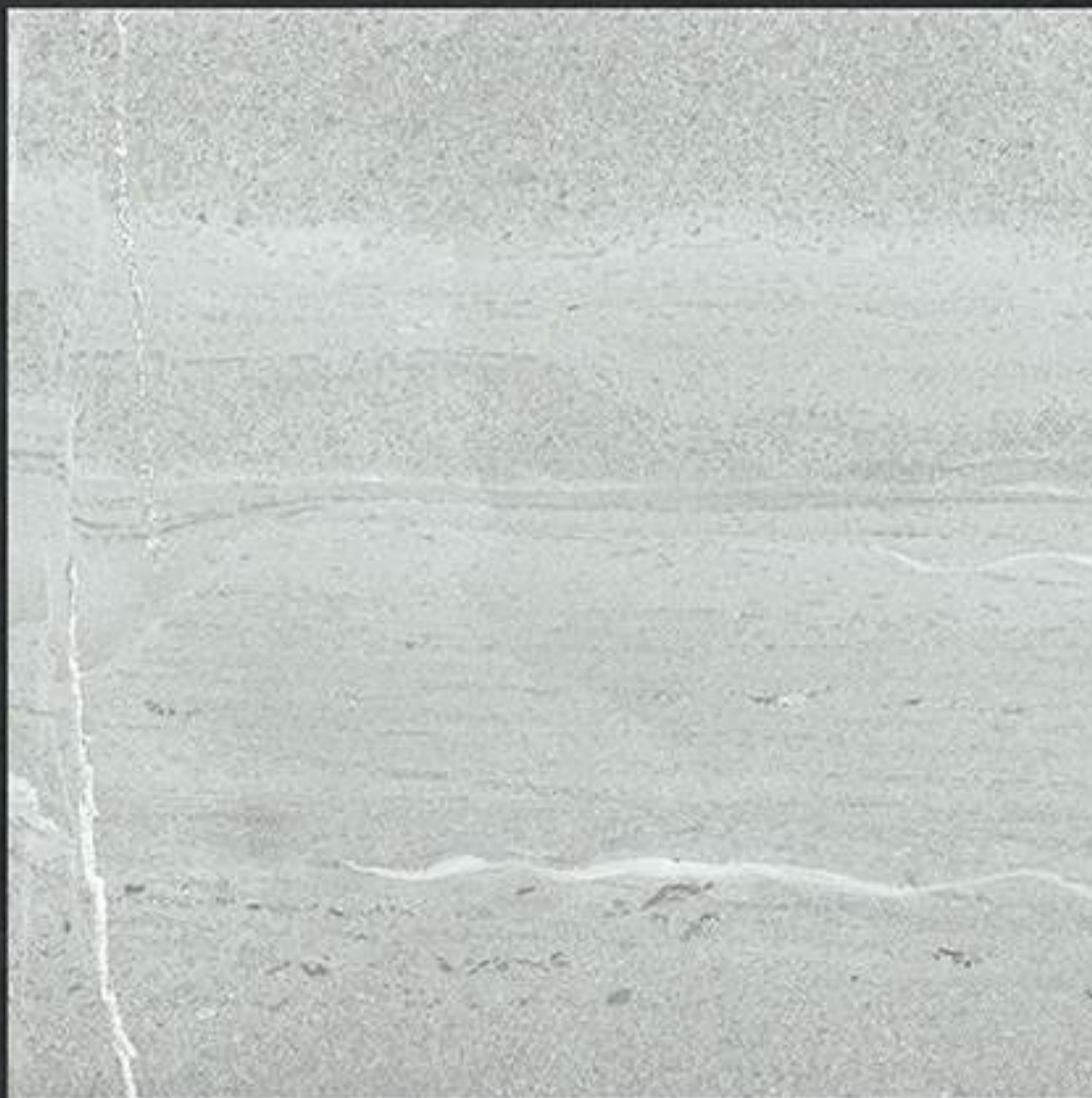
**FOSSILIA VERDE**



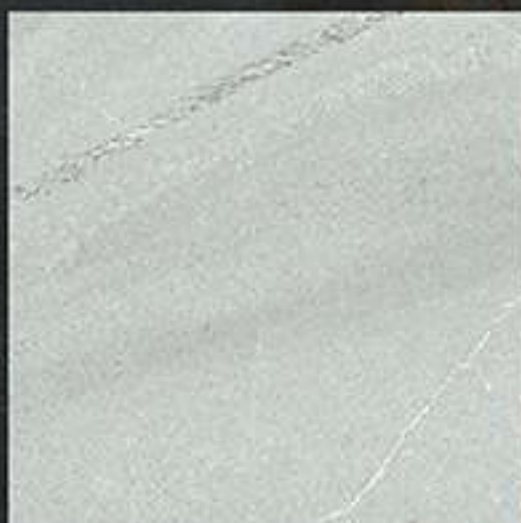
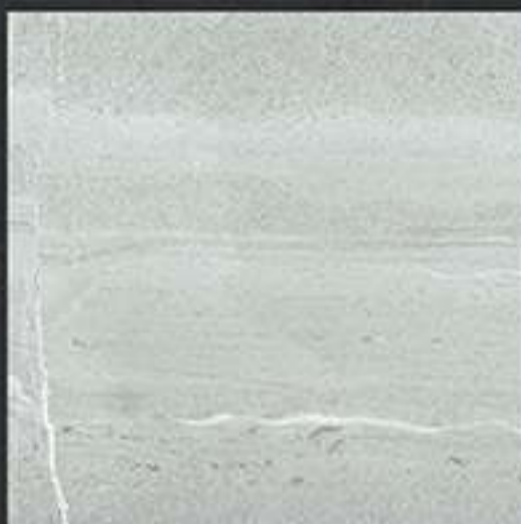


**GALAXY-SILVER**





**GALAXY-VERDE**





**LASTLE BEIGE**





**REVIVAL COPPER**





**REVIVAL FANTA**





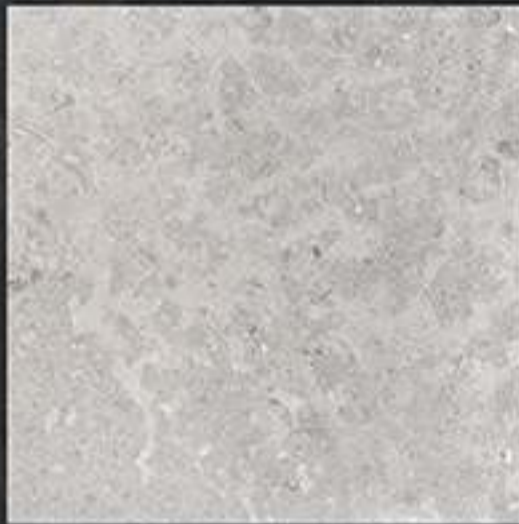


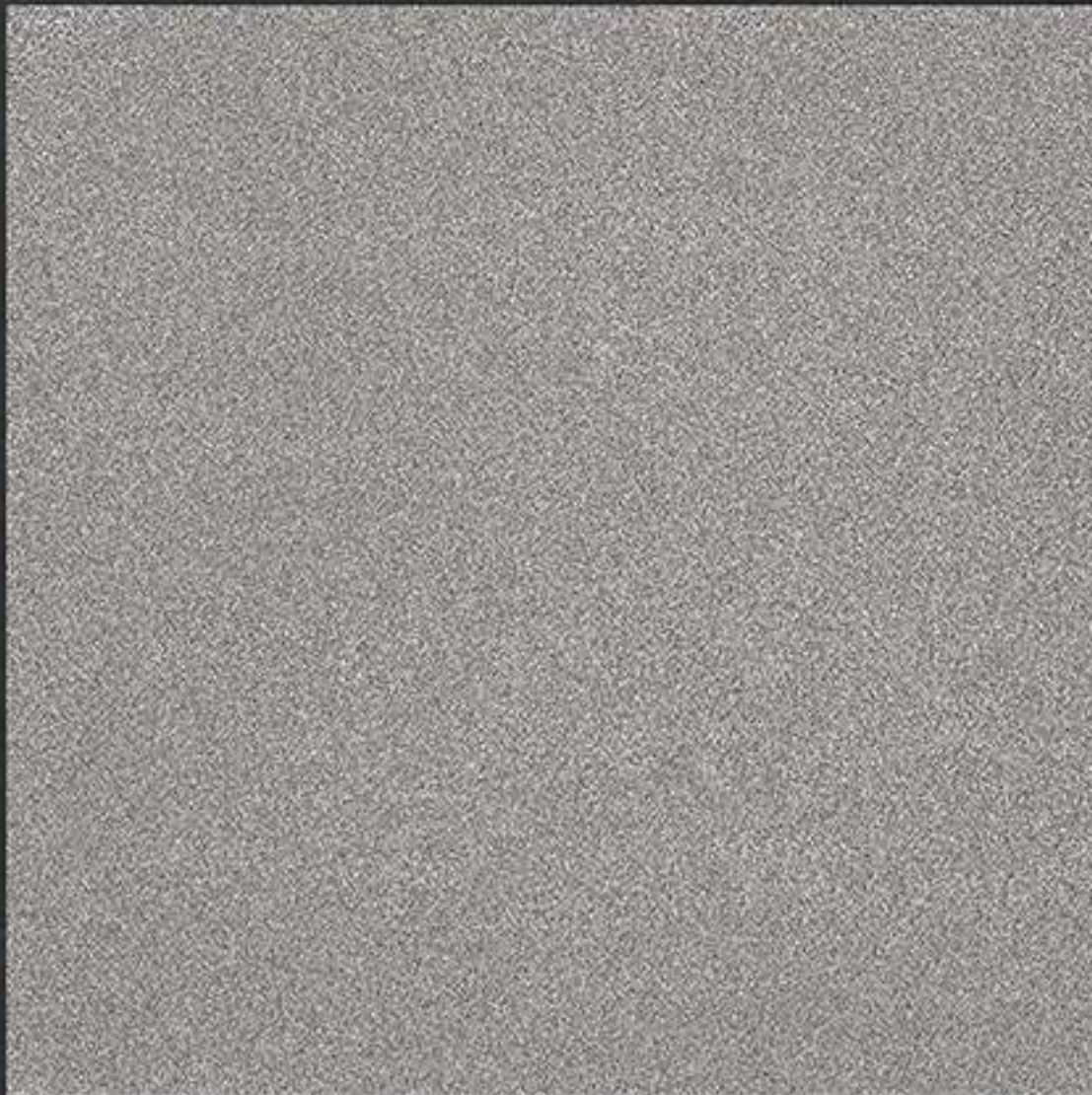
**REVIVAL OCEAN**



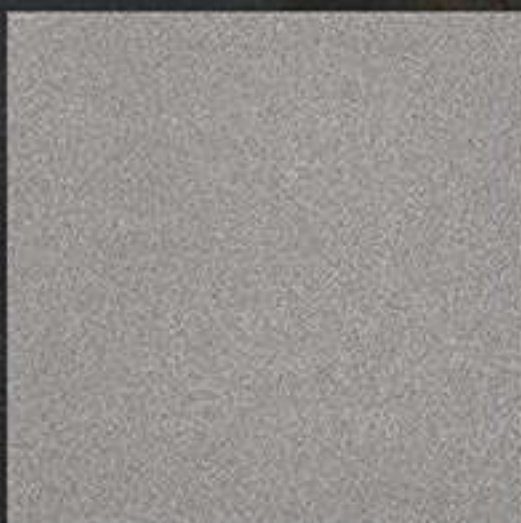
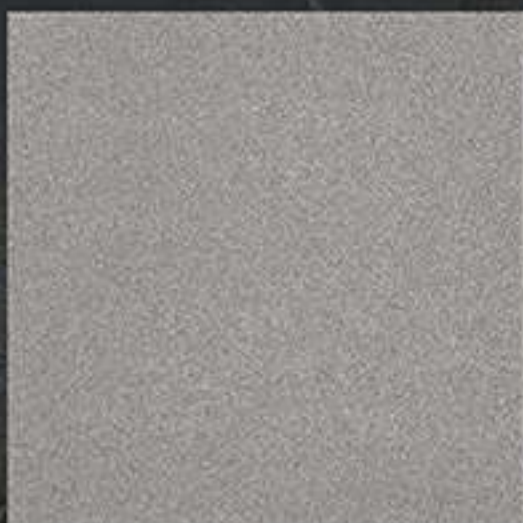


**RIVERSTONE GREY**





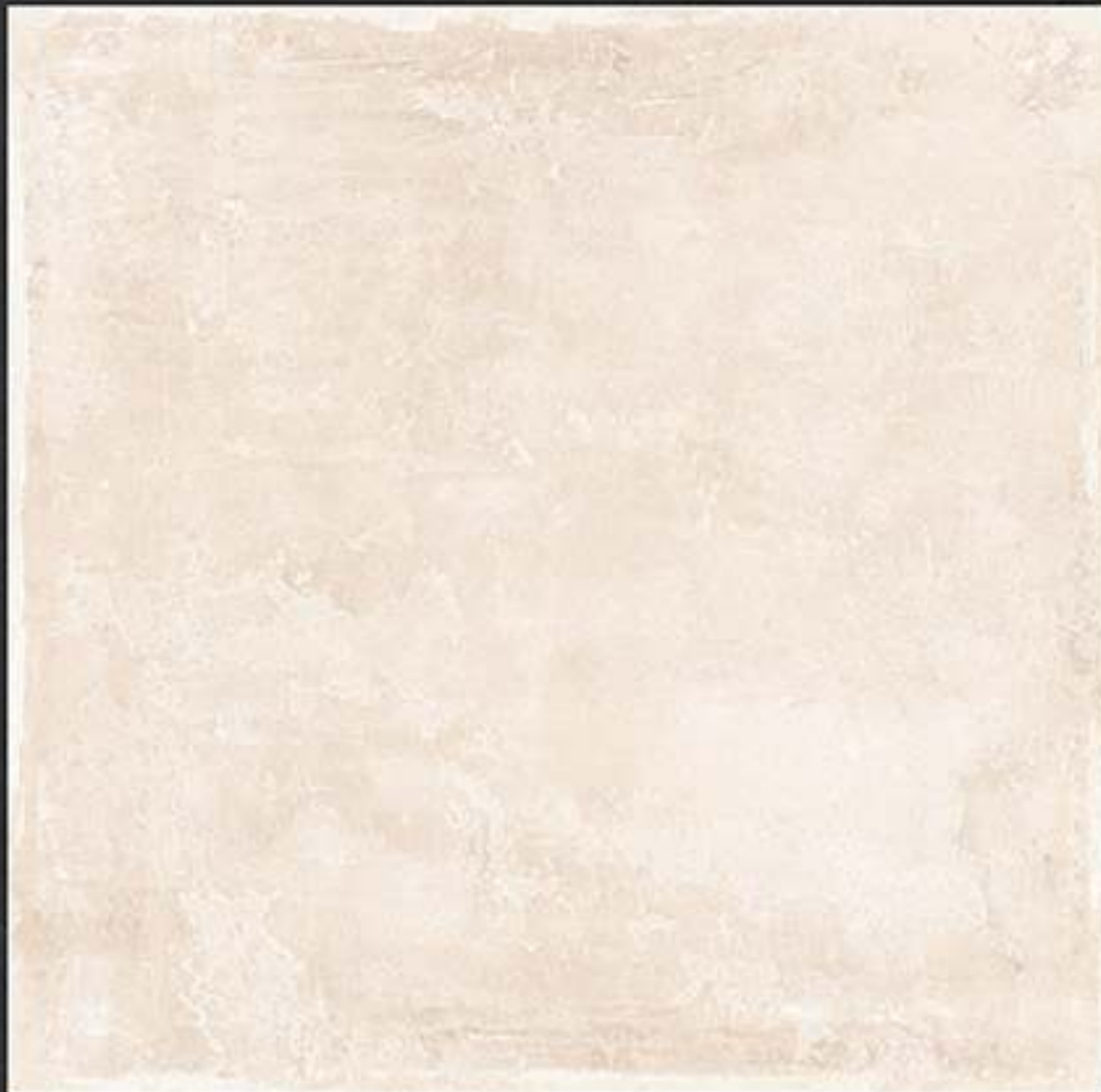
**SANDSTONE NEGRO**





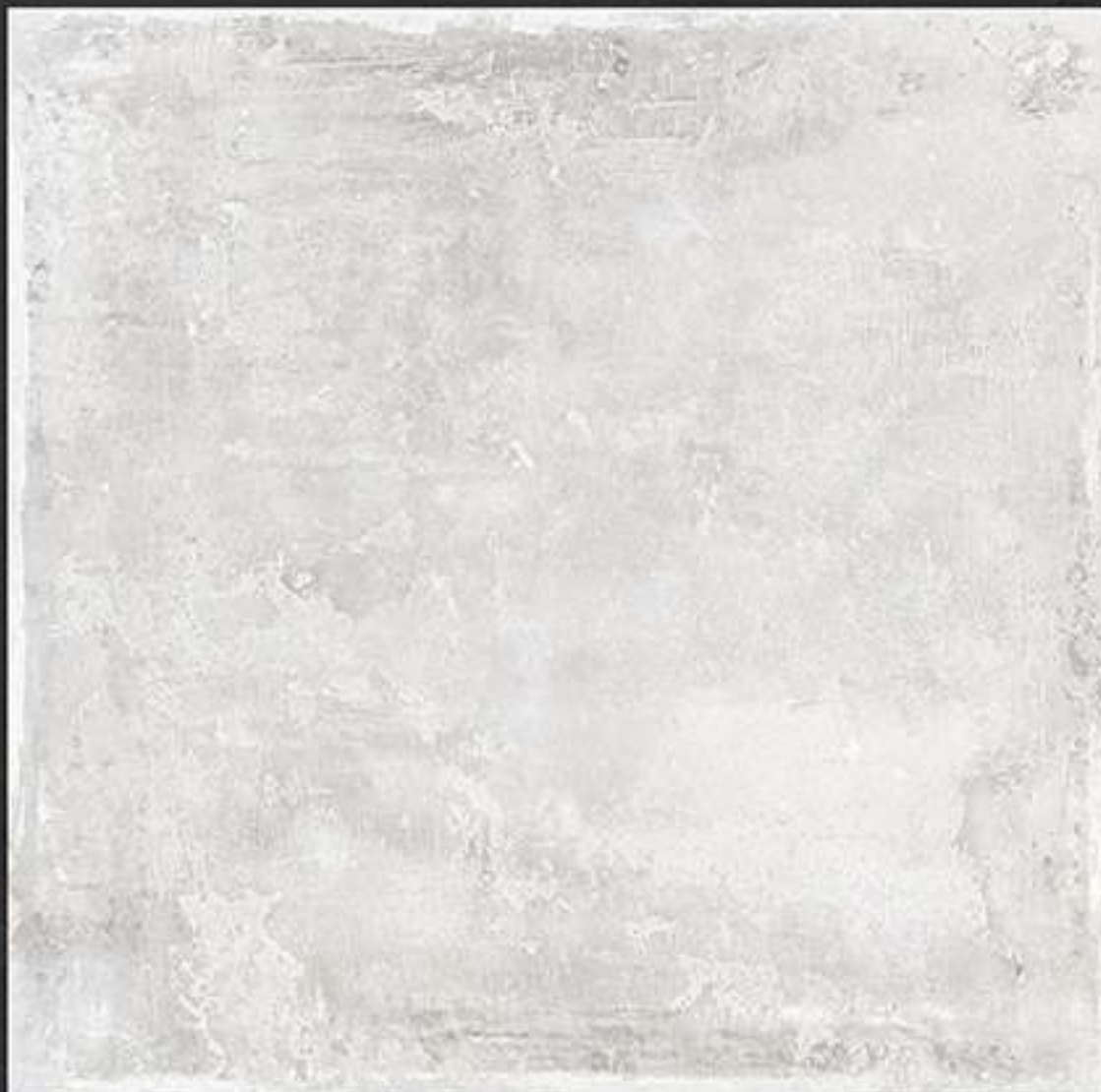
**STONEFIRE BRONZE**





**TERRAZZO CREMA**



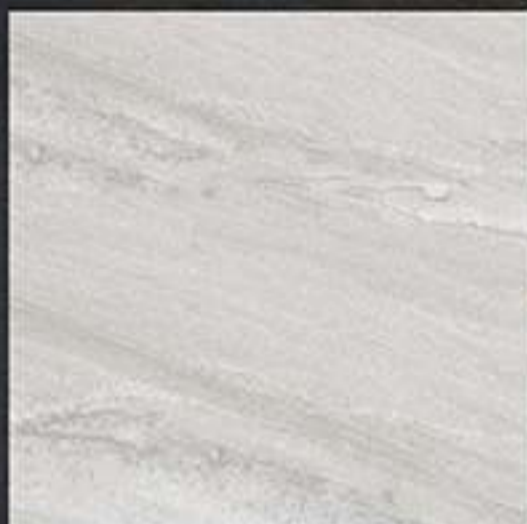


**TERRAZZO SMOKEY**





**VOLAKAS BIANCO**





**VOLCANO BEIGE**







**VOLCANO GREY**





**ABSOLUTE GREY**



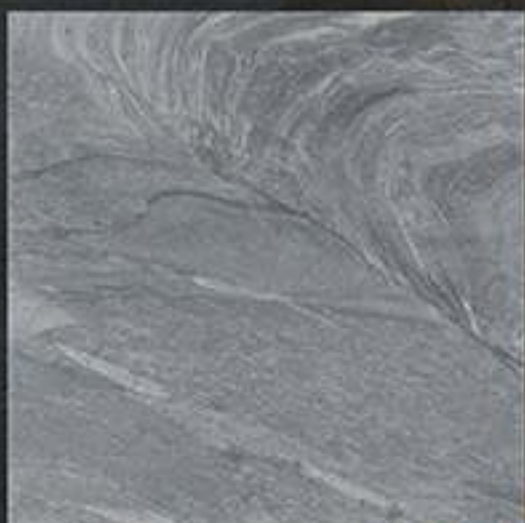
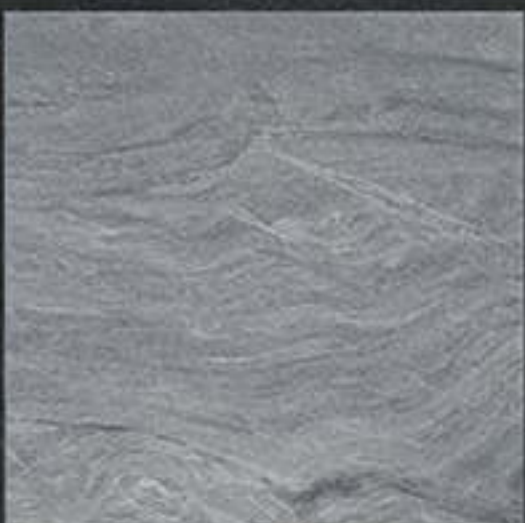
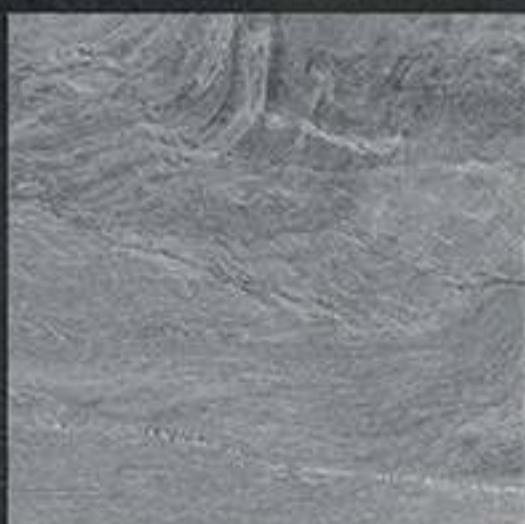
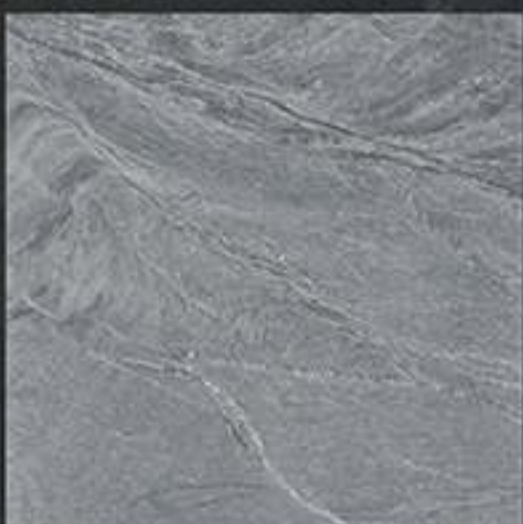
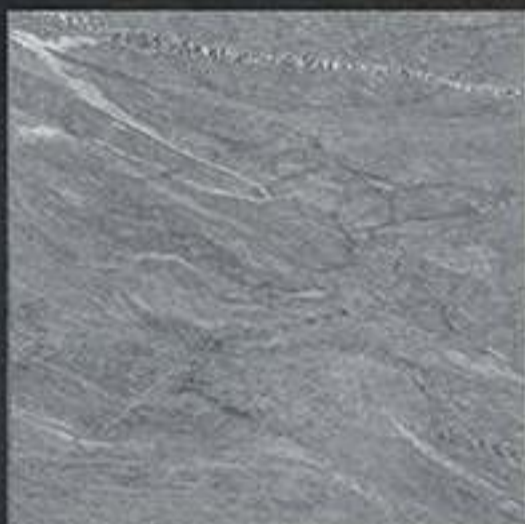
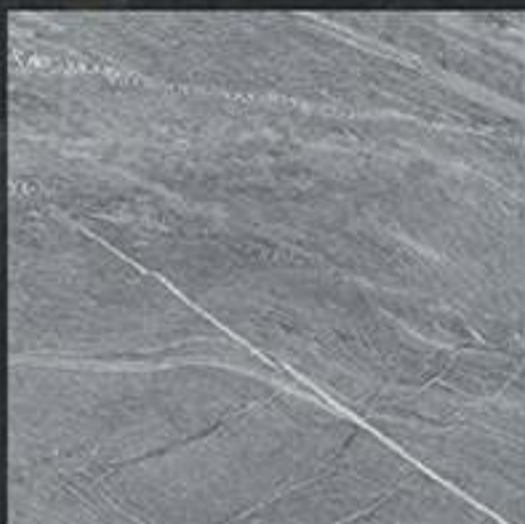
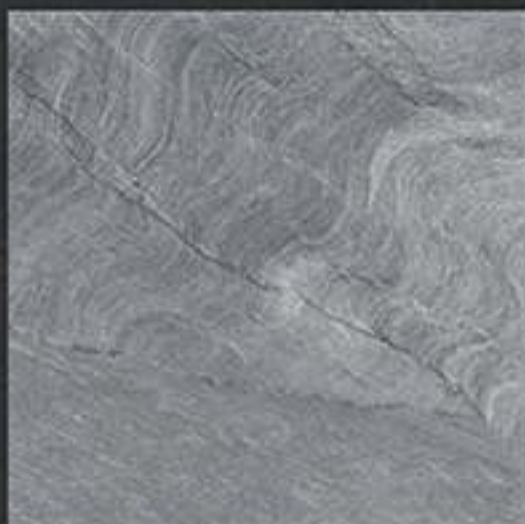


**ABSOLUTE CREMA**





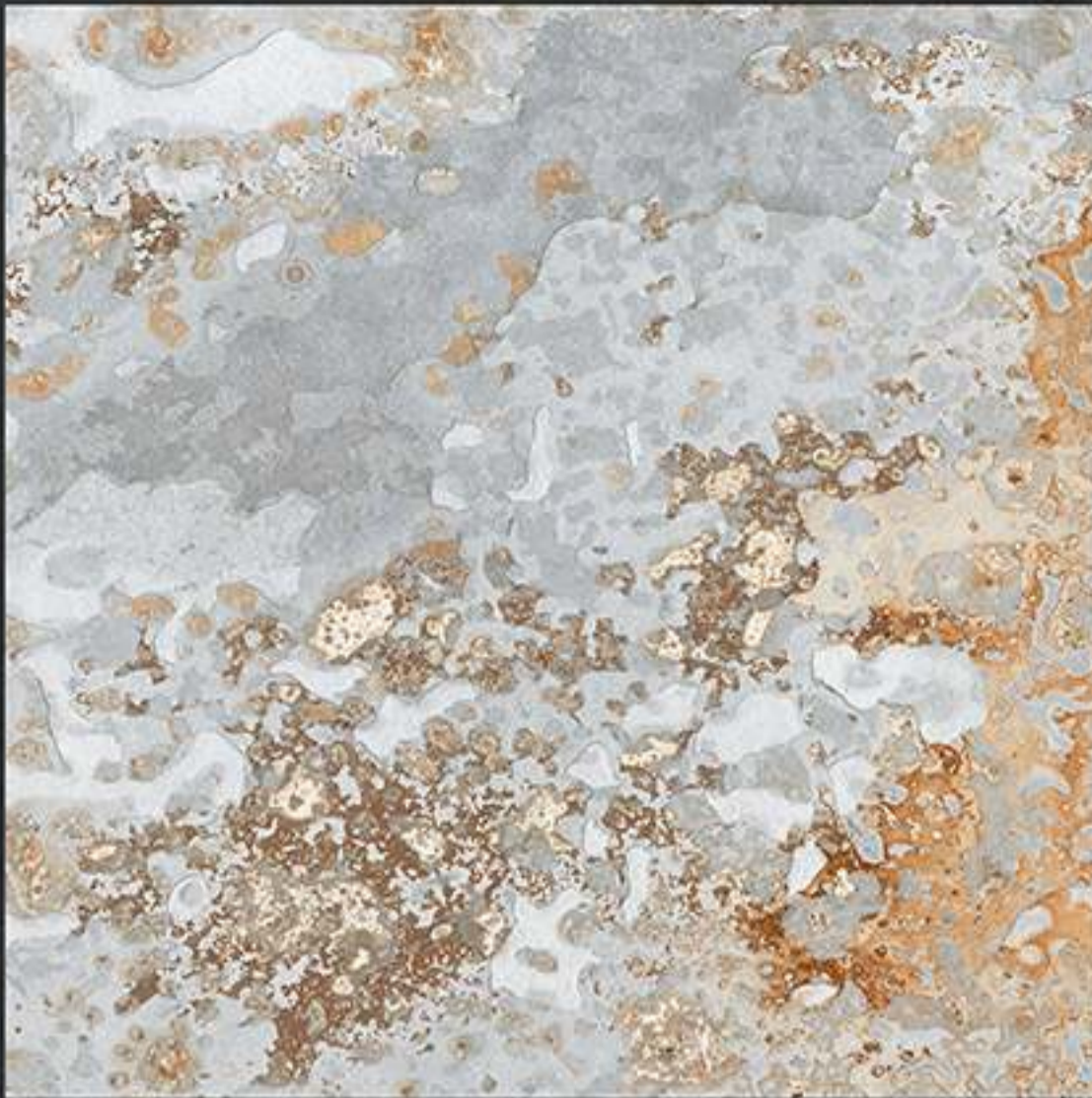
**BASALTINE BLACK**



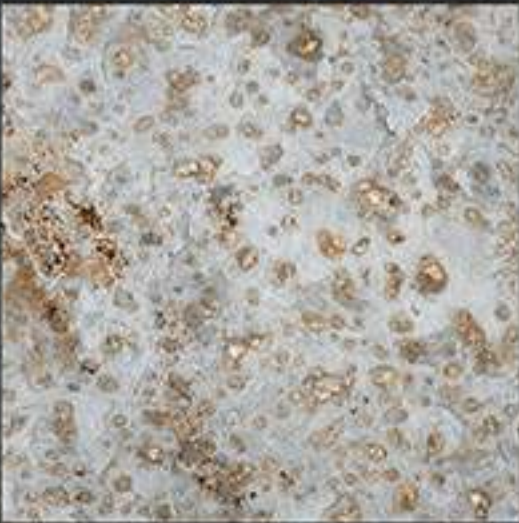
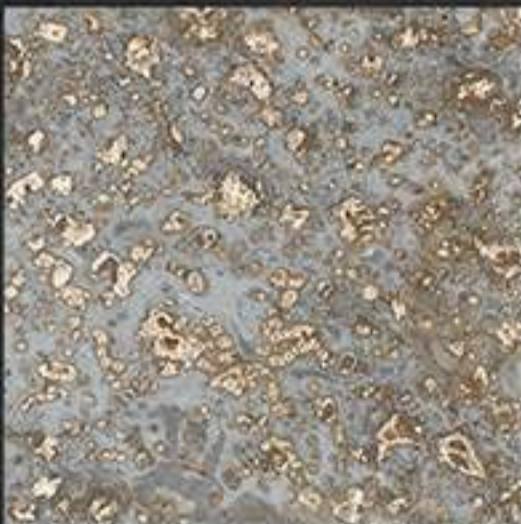
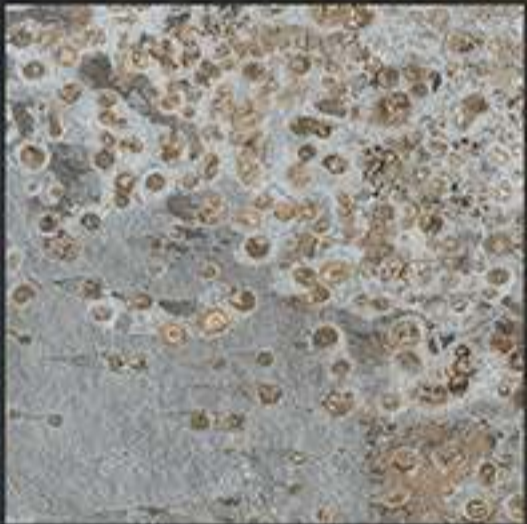
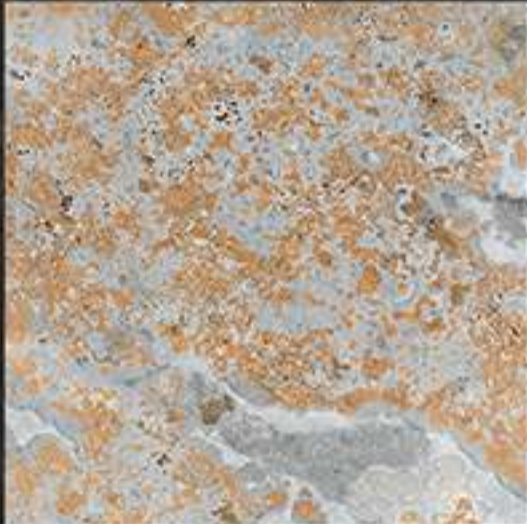
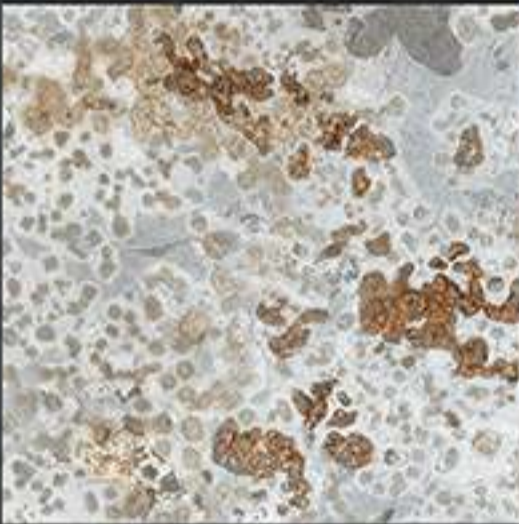


**BASALTINE GREY**





**BRAZILIAN SLATE GREY**





**BRECCIA CREMA**





**BRECCIA GREY**







**CEMENTO CREMA**





**CEMENTO GREY**





**DESERT CREMA**





**DESERT GREY**





**LUMEN CREMA**





**LUMEN VERDE**





**NEWTON CREMA**





**NEWTON GREY**







**NOVA CREMA**





**NOVA GREY**





## **NOVAC CERAMIC LLP**

At: Lalpar, Real Plaza - 1, Near Omkar Petroleum,  
8-A, National Highway, Morbi - 363 642.  
Cell: +91 97251 20510

[www.novacceramic.com](http://www.novacceramic.com) | [info@novacceramic.com](mailto:info@novacceramic.com)