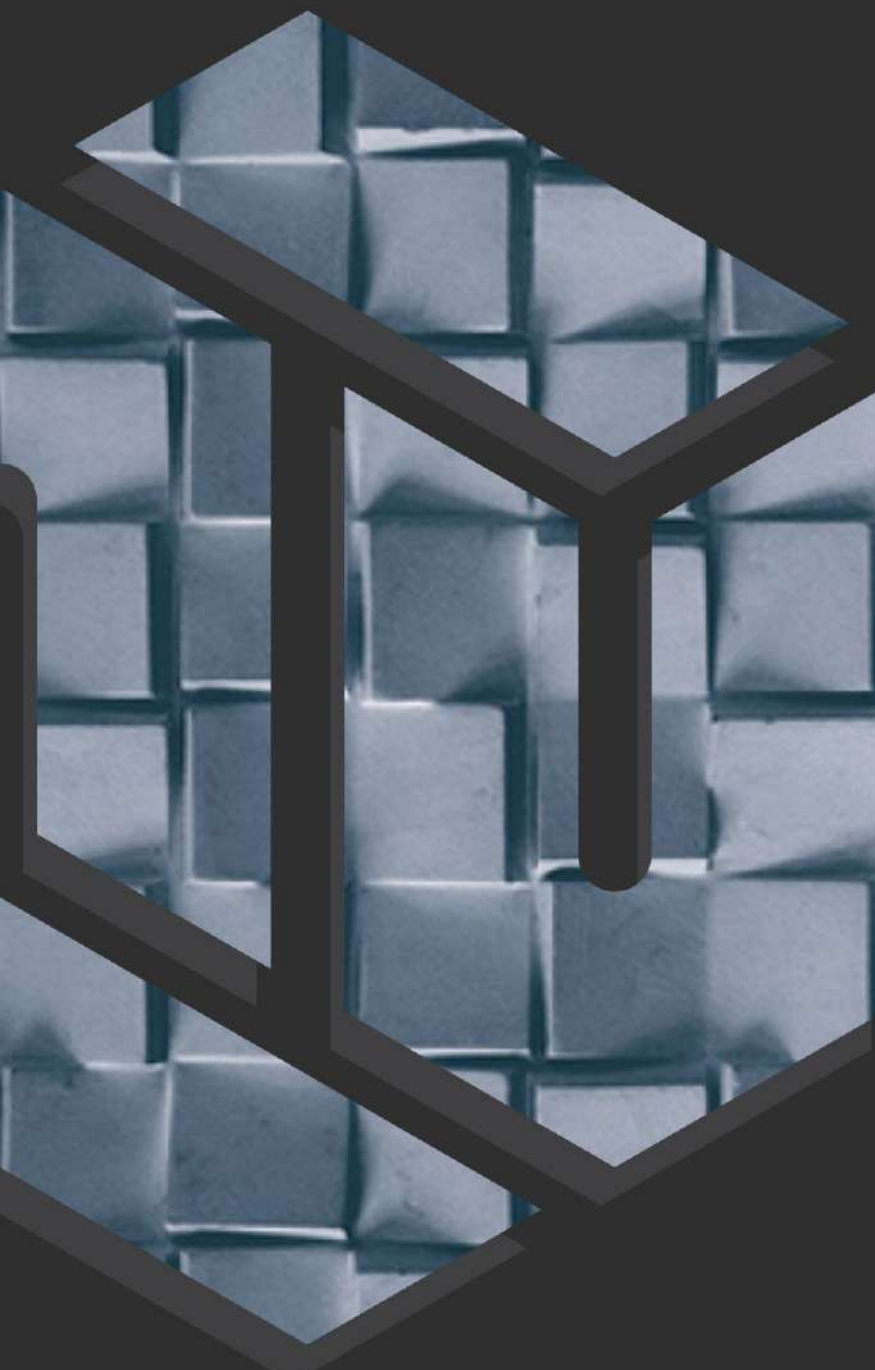




**NOVAC**

C E R A M I C

Committed to Quality



3D & Moroccan & Pooja

**300**  
**X**<sub>mm</sub>  
**600**

DIGITAL WALL TILES

A photograph of an ornate, multi-story architectural interior, possibly a palace or a historical building, with intricate carvings and balconies. The lighting is dramatic, highlighting the details of the architecture.

# Glossy 3D SERIES

S E R I E S



Company makes emphasis on quality measures themost. The total quilty management principles the constant practice of improving in technology and manpower knowledge helps company to improve quilty on regular basis.



**NOVAC**  
CERAMIC  
Committed to Quality

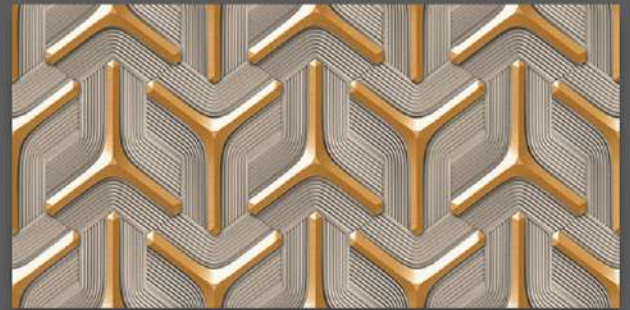
# GLOSSY SERIES



9501\_LT-(Plain)

9501\_HL1-(Plain)

9501\_DK-(Plain)



9502\_LT-(continue)

9502\_HL1-(Plain)

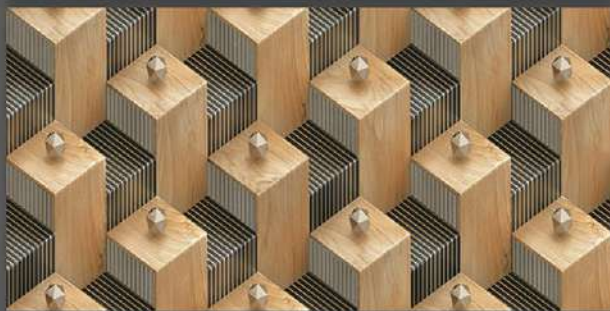
9502\_HL2-(Plain)

9502\_DK-(continue)



**NOVAC**  
CERAMIC  
Committed to Quality

# GLOSSY SERIES



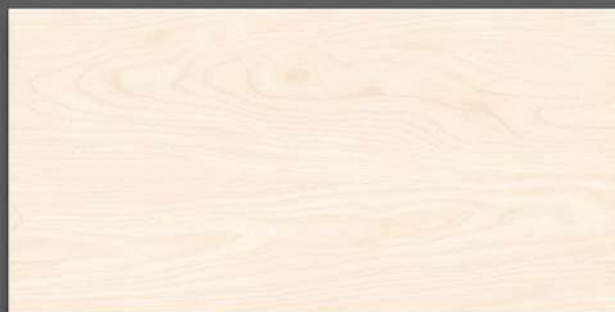
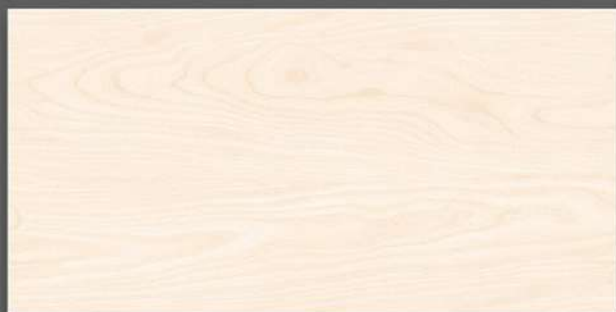
9503\_LT(continue)  
9503\_HL1-(Plain)  
9503\_DK-(continue)

9504\_LT-(continue)  
9504\_HL1-(Plain)  
9504\_HL2-(Plain)  
9504\_HL3-(Plain)



**NOVAC**  
CERAMIC  
Committed to Quality

# GLOSSY SERIES



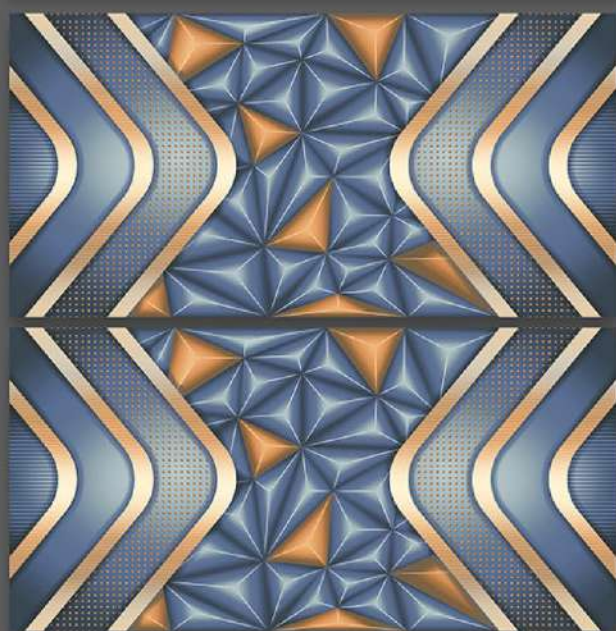
9505\_LT(continue)  
9505\_HL1-(Plain)  
9505\_DK-(continue)

9505\_LT-(continue)  
9505\_HL2-(Plain)  
9505\_DK-(continue)

# GLOSSY SERIES



**NOVAC**  
CERAMIC  
Committed to Quality



9506\_LT-(Plain)  
9506\_HL1-(Plain)  
9506\_DK-(Plain)

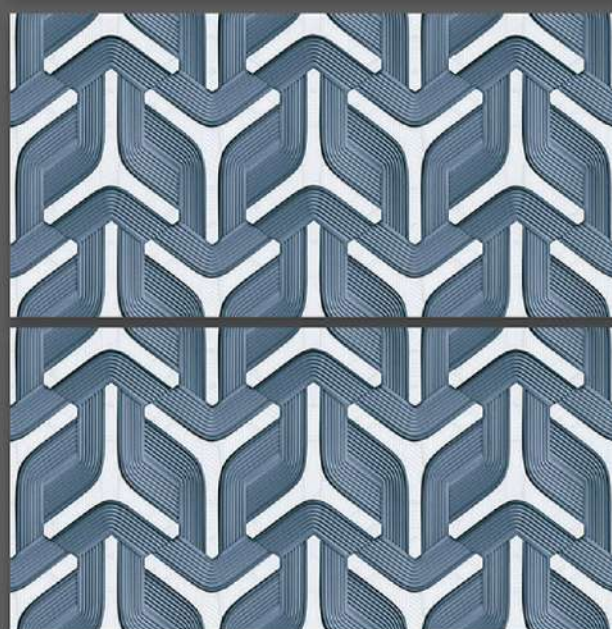
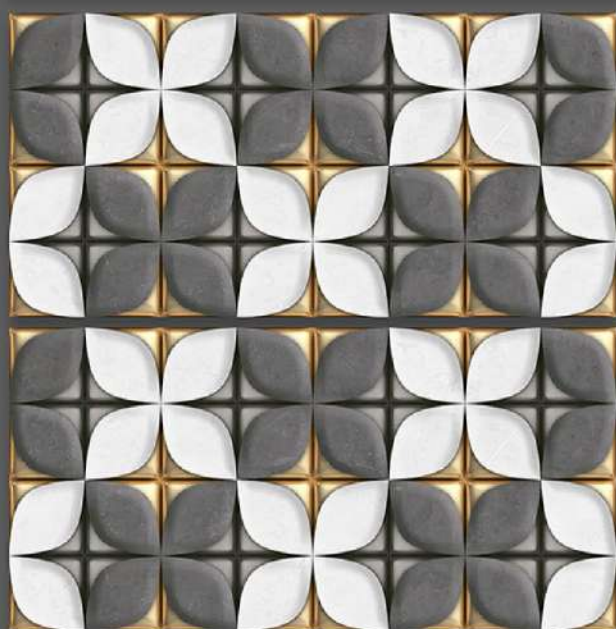
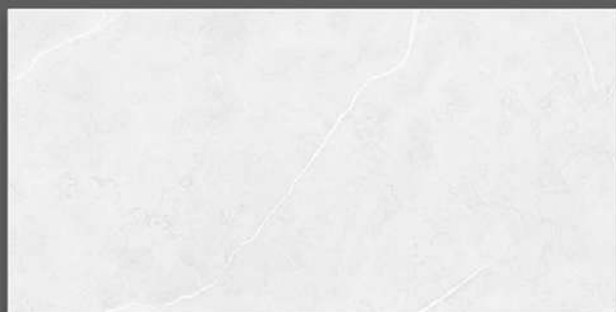


9507\_LT-(continue)  
9507\_HL1-(Plain)  
9507\_LT-(continue)



**NOVAC**  
CERAMIC  
Committed to Quality

# GLOSSY SERIES



9508\_LT-(Plain)

9508\_HL1-(Plain)

9508\_DK-(Plain)

9509\_LT-(continue)

9509\_HL1-(Plain)

9509\_DK-(continue)

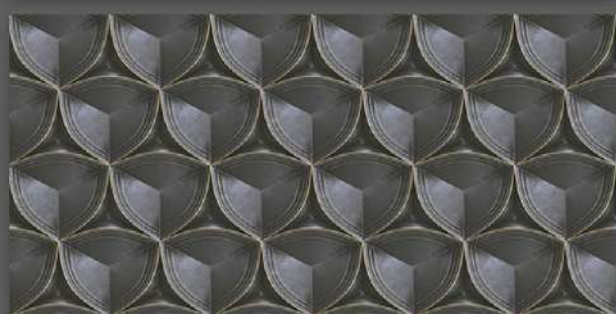
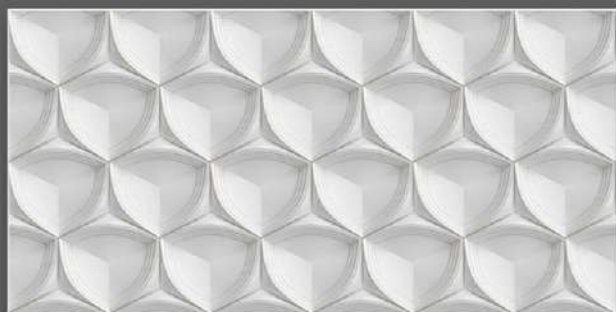


**NOVAC**

CERAMIC

Committed to Quality

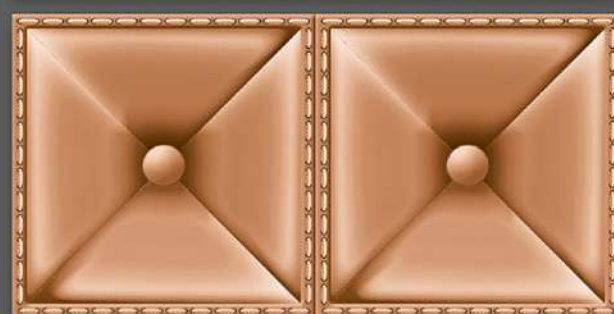
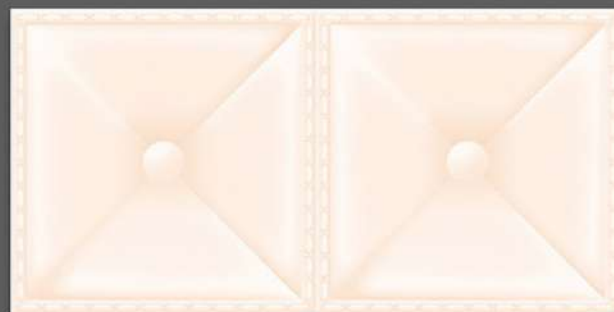
# GLOSSY SERIES



9510\_LT-(continue)

9510\_HL1-(Plain)

9510\_DK-(continue)



9511\_LT-(Punch)

9511\_HL1-(Punch)

9511\_HL2-(Punch)

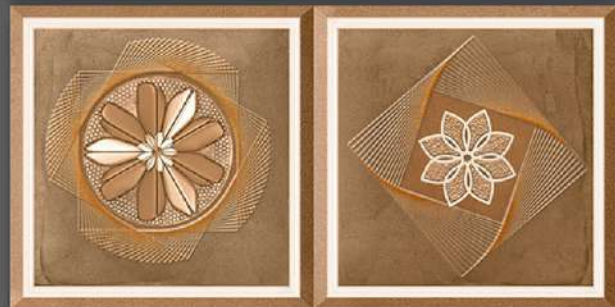
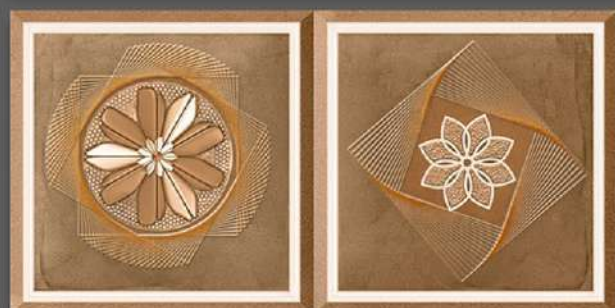
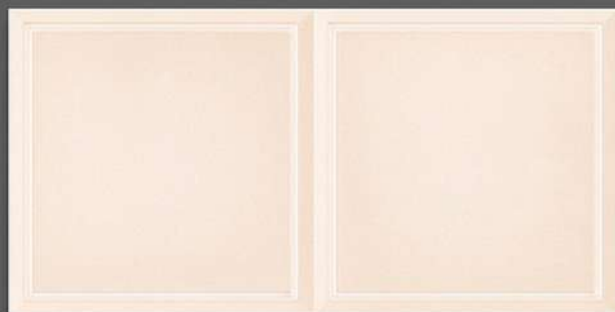
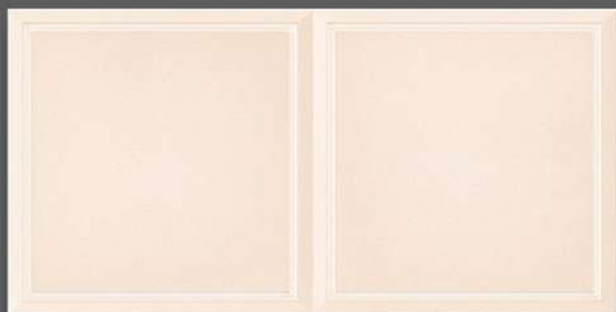
9511\_DK-(Punch)



# GLOSSY SERIES



**NOVAC**  
CERAMIC  
Committed to Quality



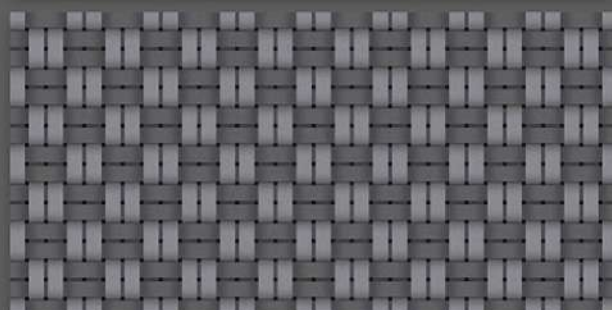
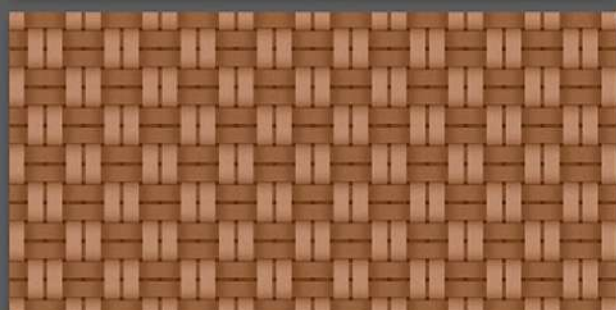
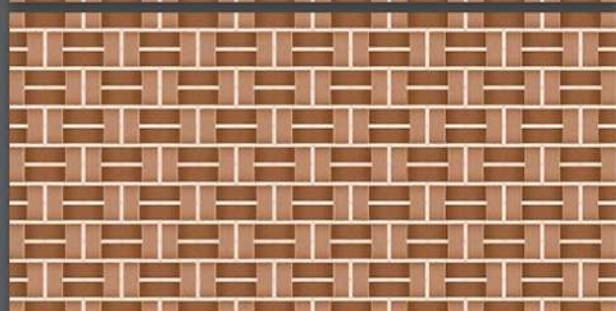
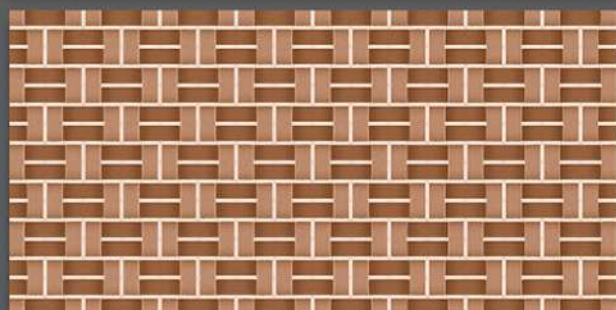
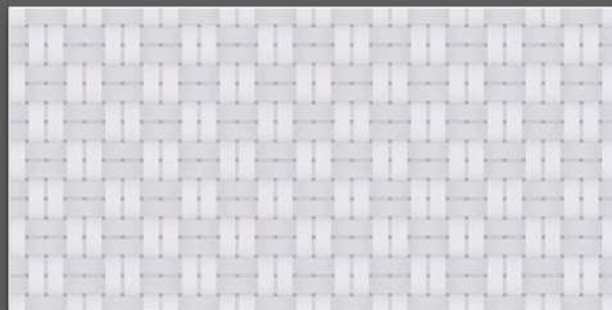
9512\_LT-(Punch)  
9512\_HL1-(Punch)  
9512\_DK-(Punch)

9512\_LT-(Punch)  
9512\_HL2-(Punch)  
9512\_DK-(Punch)

# GLOSSY SERIES



**NOVAC**  
CERAMIC  
Committed to Quality



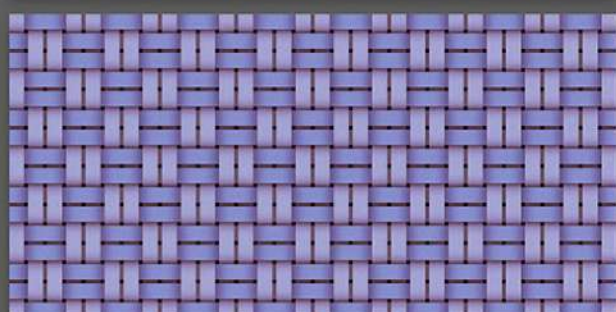
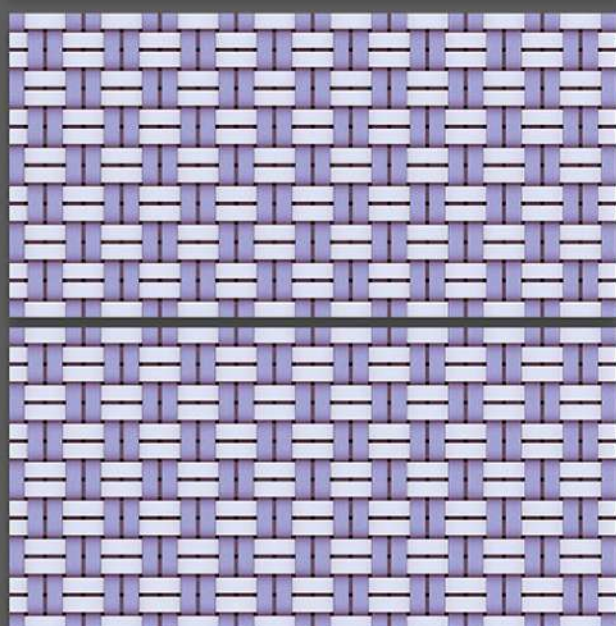
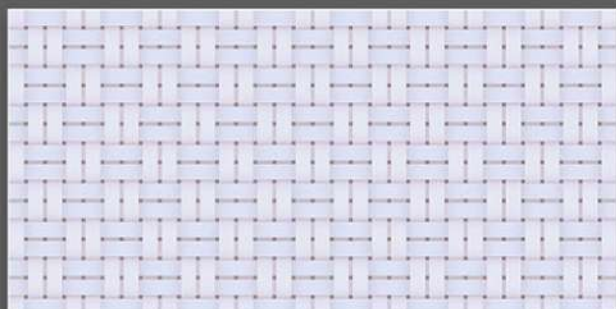
9513\_LT-(continue)  
9513\_HL1-(Plain)  
9513\_DK-(continue)

9514\_LT-(continue)  
9514\_HL1-(Plain)  
9514\_DK-(continue)



**NOVAC**  
CERAMIC  
Committed to Quality

# GLOSSY SERIES



9515\_LT-(continue)  
9515\_HL1-(Plain)  
9515\_DK-(continue)



9516\_LT-(continue)  
9516\_DK-(continue)



**NOVAC**  
CERAMIC  
Committed to Quality

# GLOSSY SERIES



9516\_LT-(continue)  
9517\_DK-(continue)

9516\_LT-(continue)  
9518\_DK-(continue)

A photograph of an ornate Moroccan architectural interior, likely a courtyard or a large hall, featuring intricate carvings and a warm, golden-brown color palette. The architecture is characterized by multiple levels of balconies with detailed railings and a central courtyard area.

Glossy/Matt

# MOROCCAN

S E R I E S

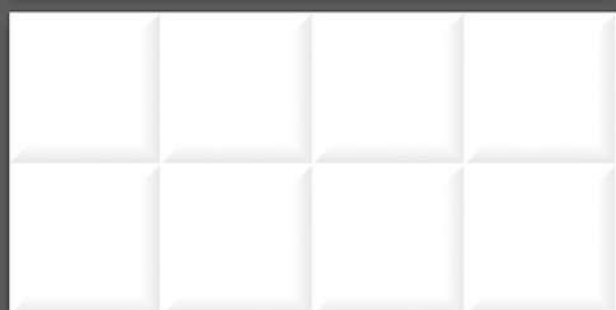
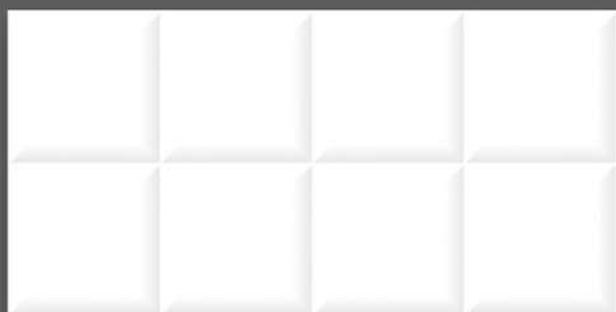


Company makes emphasis on quality measures themost. The total quilty management principles the constant practice of improving in technology and manpower knowledge helps company to improve quilty on regular basis.

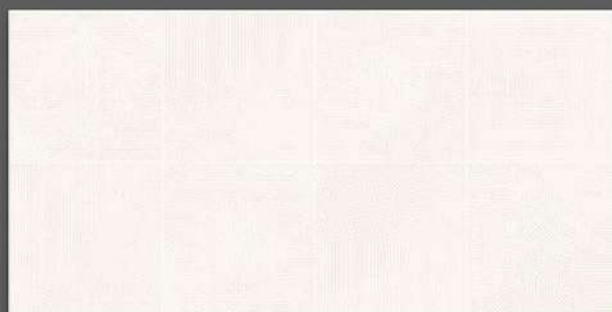


**NOVAC**  
CERAMIC  
Committed to Quality

GLOSSY SERIES



Moroccan-01\_LT-(Punch)  
Moroccan-01\_HL1-(Punch)  
Moroccan-01\_LT-(Punch)

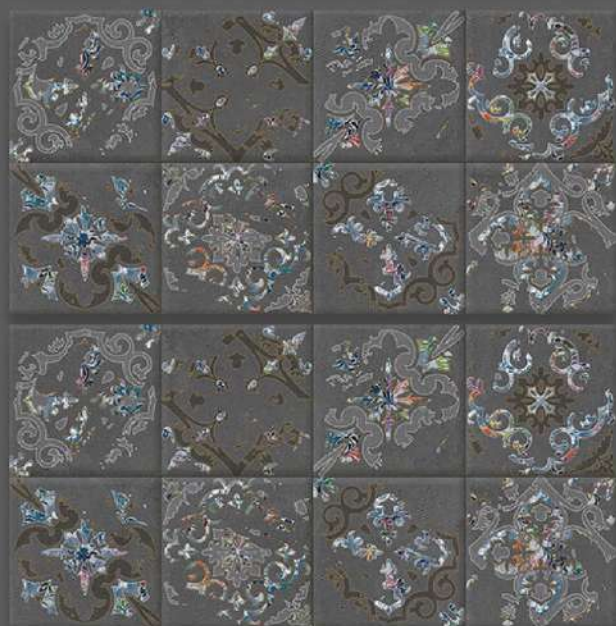


Moroccan-02\_LT-(Punch)  
Moroccan-02\_HL1-(Punch)  
Moroccan-02\_DK-(Punch)

# GLOSSY SERIES



**NOVAC**  
CERAMIC  
Committed to Quality



Moroccan-03\_LT-(Punch)  
Moroccan-03\_HL1-(Punch)  
Moroccan-03\_DK-(Punch)

Moroccan-03\_LT-(Punch)  
Moroccan-03\_HL2-(Punch)  
Moroccan-03\_DK-(Punch)



**NOVAC**  
CERAMIC  
Committed to Quality

# GLOSSY SERIES



Moroccan-04\_LT-(Punch)  
Moroccan-04\_HL1-(Punch)  
Moroccan-04\_DK-(Punch)

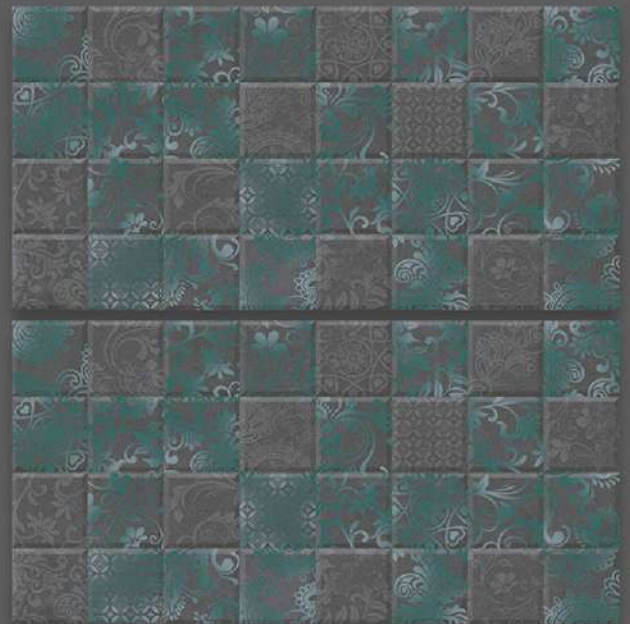
Moroccan-05\_LT-(Punch)  
Moroccan-05\_HL1-(Punch)  
Moroccan-05\_DK-(Punch)





**NOVAC**  
CERAMIC  
Committed to Quality

# GLOSSY SERIES



Moroccan-06\_LT-(continue)  
Moroccan-06\_HL1-(Punch)  
Moroccan-06\_DK-(continue)

Moroccan-07\_LT-(Punch)  
Moroccan-07\_HL1-(Punch)  
Moroccan-07\_DK-(Punch)

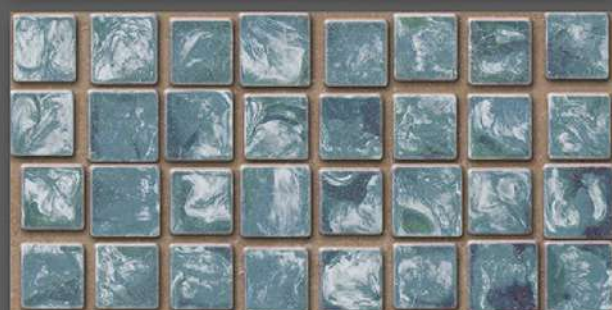
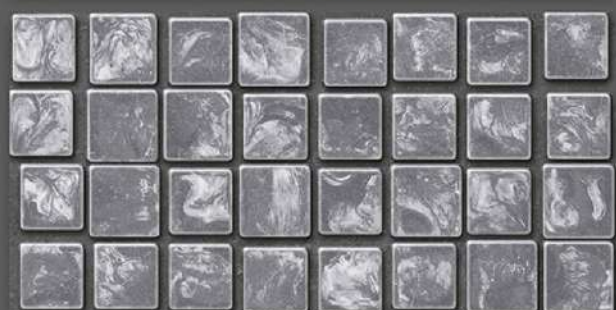


**NOVAC**

CERAMIC

Committed to Quality

# GLOSSY SERIES



Moroccan-08\_LT-(Punch)  
Moroccan-08\_HL1-(Punch)  
Moroccan-08\_DK-(Punch)

Moroccan-09\_LT-(Punch)  
Moroccan-09\_HL1-(Punch)  
Moroccan-09\_DK-(Punch)



**NOVAC**  
CERAMIC  
Committed to Quality

# GLOSSY SERIES



Moroccan-10\_LT-(continue)  
Moroccan-10\_HL1-(Punch)  
Moroccan-10\_DK-(continue)

Moroccan-10\_LT-(continue)  
Moroccan-10\_HL2-(Punch)  
Moroccan-10\_DK-(continue)

# MATT SERIES



**NOVAC**  
CERAMIC  
Committed to Quality



Moroccan-11\_LT  
Moroccan-11\_HL1-(Punch)  
Moroccan-11\_DK

Moroccan-11\_LT  
Moroccan-11\_HL1-(Punch)  
Moroccan-11\_DK

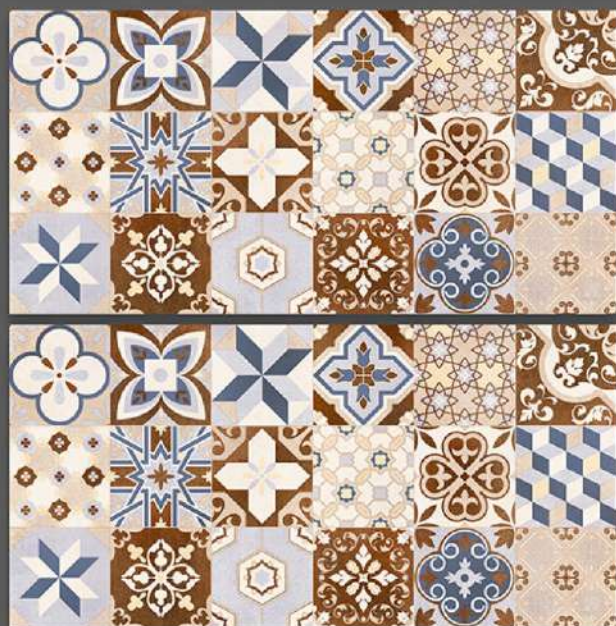
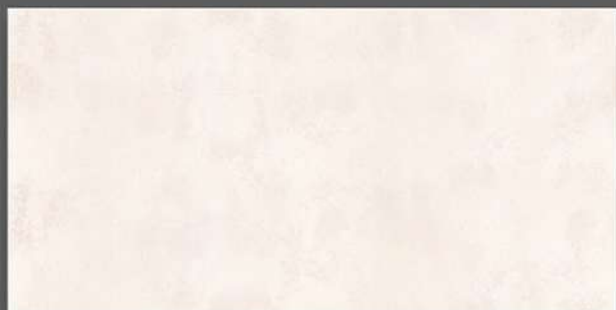
# MATT SERIES



**NOVAC**

CERAMIC

Committed to Quality



Moroccan-12\_LT  
Moroccan-12\_HL1-(Punch)  
Moroccan-12\_DK



Moroccan-13\_LT-(Punch)  
Moroccan-13\_HL1-(Punch)  
Moroccan-13\_DK-(Punch)

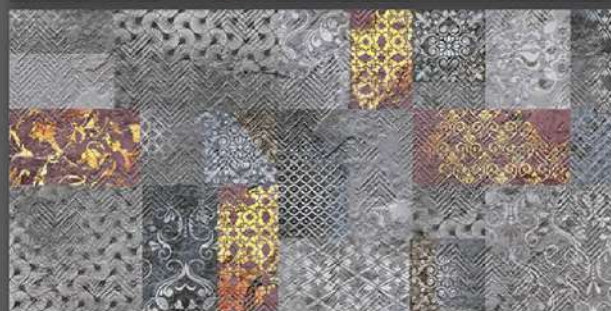
# MATT SERIES



**NOVAC**  
CERAMIC  
Committed to Quality



Moroccan-14\_LT  
Moroccan-14\_HL1-(Punch)  
Moroccan-14\_DK



Moroccan-15\_LT-(Punch)  
Moroccan-15\_HL1-(Punch)  
Moroccan-15\_DK-(Punch)

A photograph of an ornate, multi-story architectural interior, possibly a palace or a historical building, with intricate carvings and balconies. The lighting is dramatic, highlighting the details of the architecture.

# Glossy POOJA SERIES

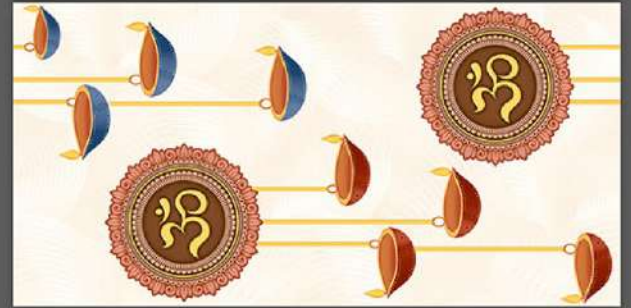
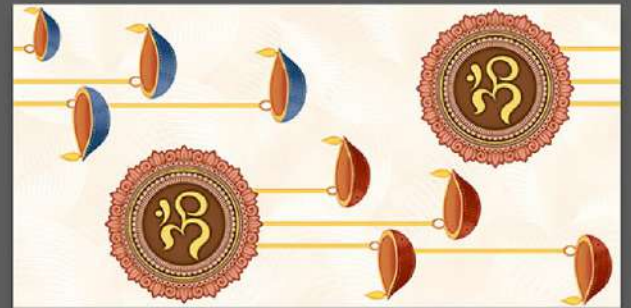


Company makes emphasis on quality measures themost. The total quilty management principles the constant practice of improving in technology and manpower knowledge helps company to improve quilty on regular basis.

# POOJA SERIES



Pooja\_01\_LT-(continue)  
Pooja\_01\_HL1-(continue)  
Pooja\_01\_DK-(continue)



Pooja\_01\_LT-(continue)  
Pooja\_01\_HL2-(continue)  
Pooja\_01\_DK-(continue)





**NOVAC**  
CERAMIC  
Committed to Quality

**POOJA SERIES**



Pooja\_01\_LT-(continue)  
Pooja\_01\_HL3-(continue)  
Pooja\_01\_DK-(continue)

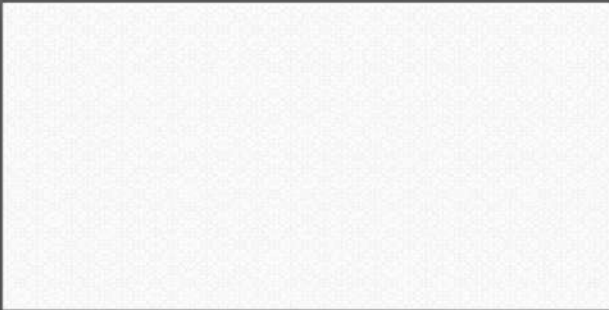


Pooja\_01\_LT-(continue)  
Pooja\_01\_HL4-(continue)  
Pooja\_01\_DK-(continue)

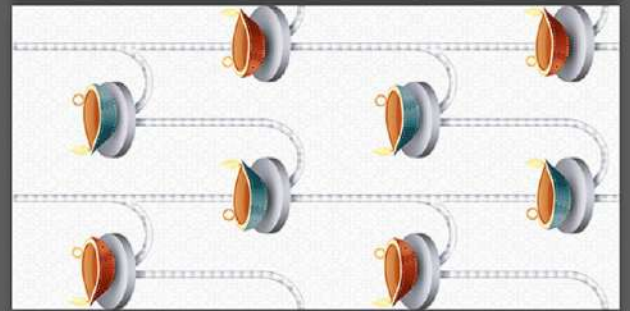
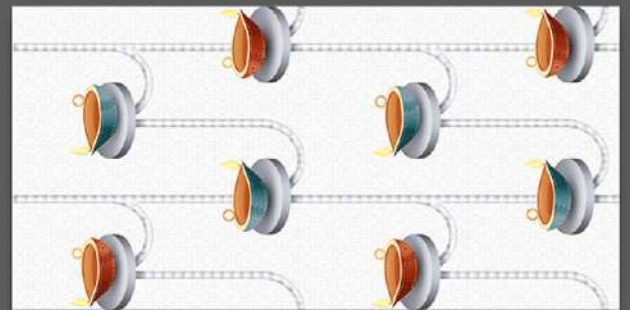
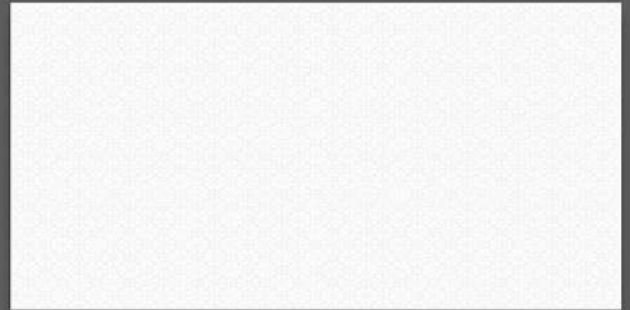
# POOJA SERIES



**NOVAC**  
CERAMIC  
Committed to Quality



Pooja\_02\_LT-(continue)  
Pooja\_02\_HL1-(continue)  
Pooja\_02\_DK-(continue)



Pooja\_02\_LT-(continue)  
Pooja\_02\_HL2-(continue)  
Pooja\_02\_DK-(continue)

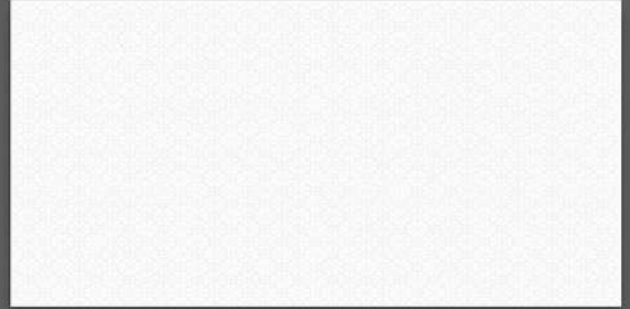


**NOVAC**  
CERAMIC  
Committed to Quality

POOJA SERIES



Pooja\_02\_LT-(continue)  
Pooja\_02\_HL3-(continue)  
Pooja\_02\_DK-(continue)

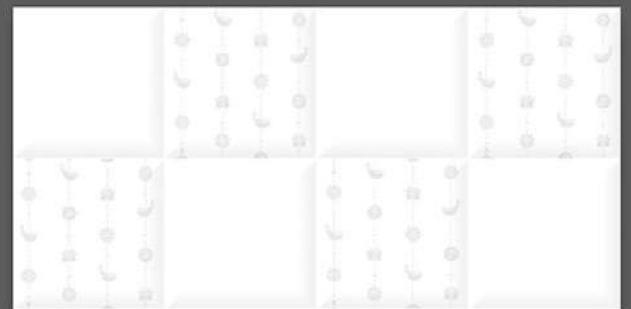
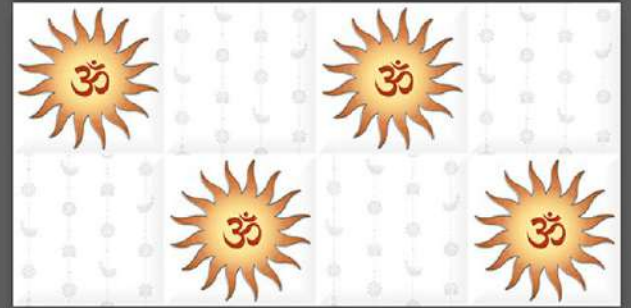
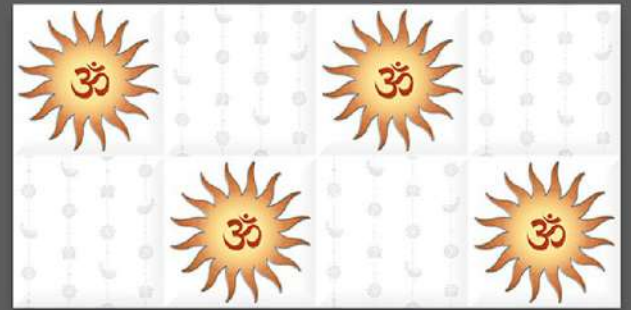
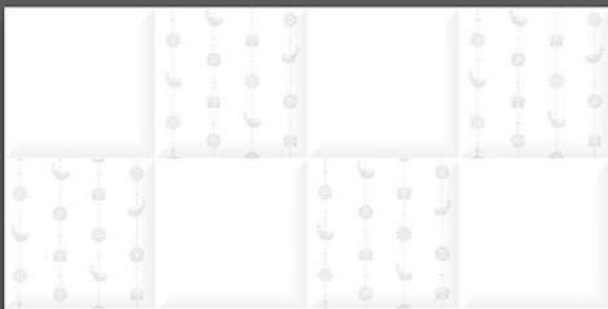


Pooja\_02\_LT-(continue)  
Pooja\_02\_HL4-(continue)  
Pooja\_02\_DK-(continue)



**NOVAC**  
CERAMIC  
Committed to Quality

# POOJA SERIES



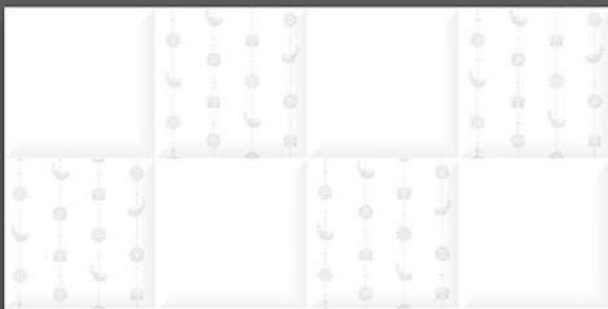
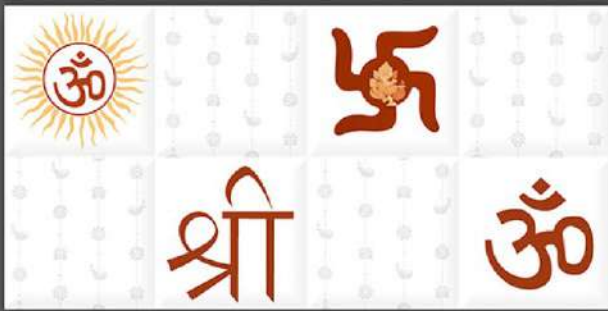
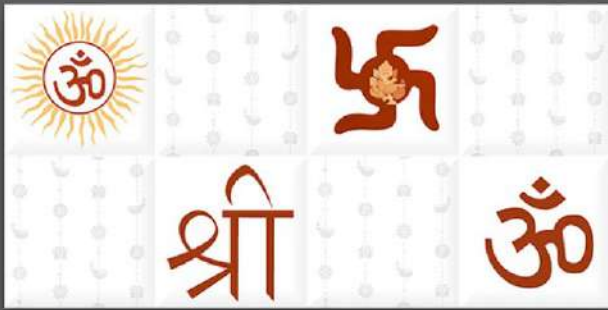
Pooja\_03\_LT-(Punch)  
Pooja\_03\_HL1-(Punch)  
Pooja\_03\_LT-(Punch)

Pooja\_03\_LT-(Punch)  
Pooja\_03\_HL2-(Punch)  
Pooja\_03\_LT-(Punch)

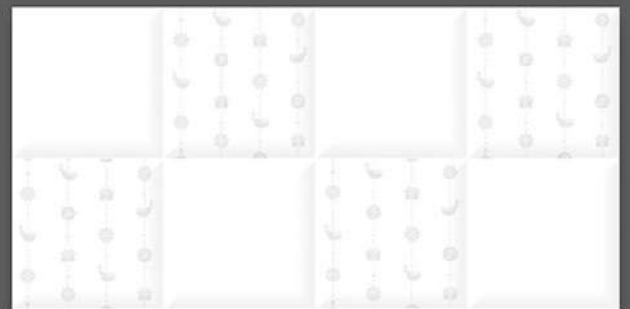


**NOVAC**  
CERAMIC  
Committed to Quality

# POOJA SERIES

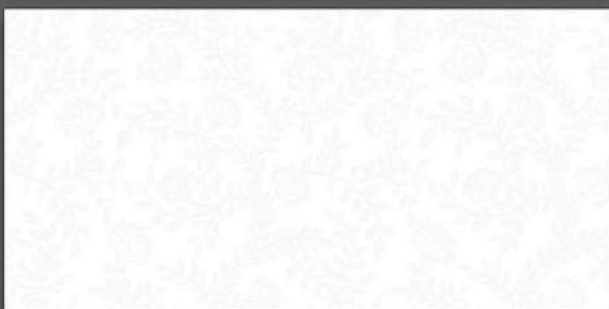


Pooja\_03\_LT-(Punch)  
Pooja\_03\_HL3-(Punch)  
Pooja\_03\_LT-(Punch)

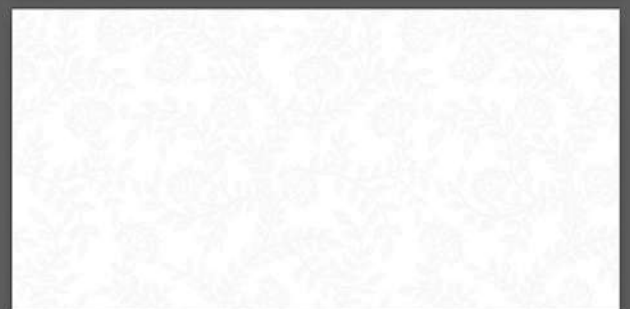


Pooja\_03\_LT-(Punch)  
Pooja\_03\_HL4-(Punch)  
Pooja\_03\_LT-(Punch)

# POOJA SERIES



Pooja\_04\_LT-(continue)  
Pooja\_04\_HL1-(continue)  
Pooja\_04\_LT-(continue)

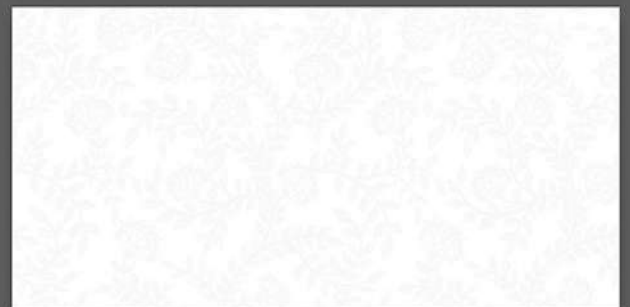
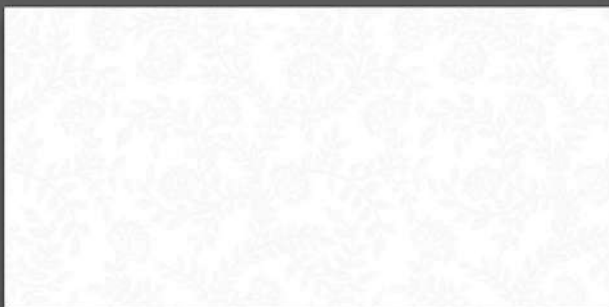


Pooja\_04\_LT-(continue)  
Pooja\_04\_HL2-(continue)  
Pooja\_04\_LT-(continue)

# POOJA SERIES



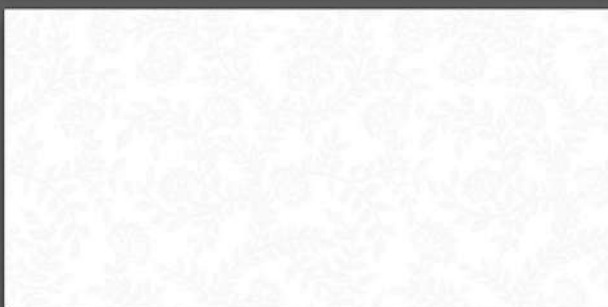
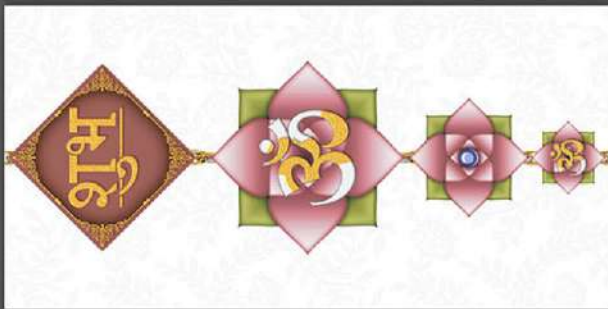
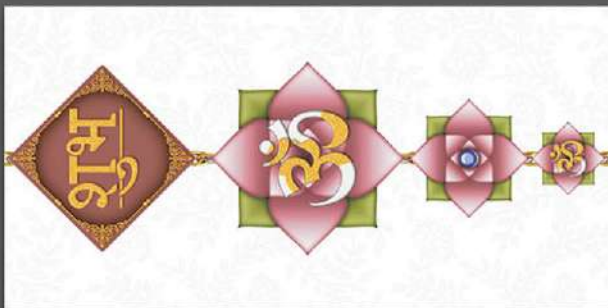
**NOVAC**  
CERAMIC  
Committed to Quality



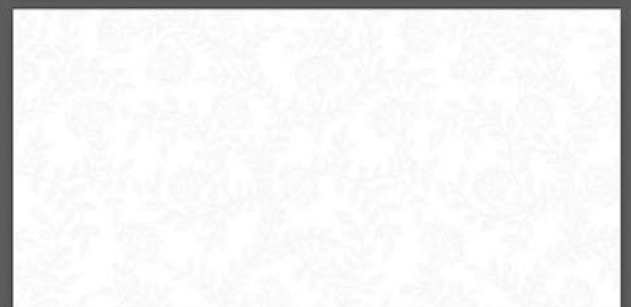
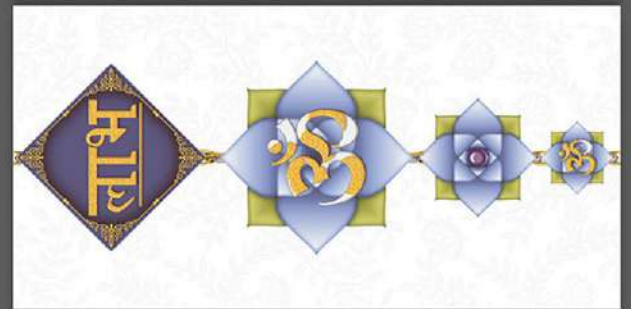
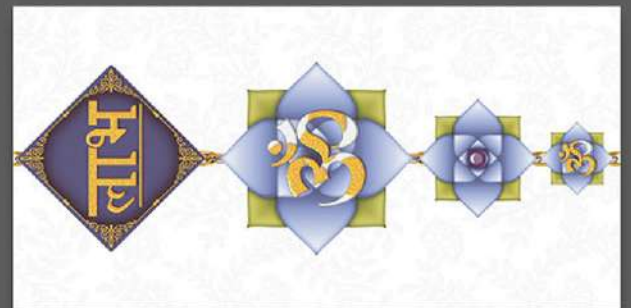
Pooja\_04\_LT-(continue)  
Pooja\_04\_HL3-(continue)  
Pooja\_04\_LT-(continue)

Pooja\_04\_LT-(continue)  
Pooja\_04\_HL3-(continue)  
Pooja\_04\_LT-(continue)

# POOJA SERIES



Pooja\_04\_LT-(continue)  
Pooja\_04\_HL4-(continue)  
Pooja\_04\_LT-(continue)



Pooja\_04\_LT-(continue)  
Pooja\_04\_HL5-(continue)  
Pooja\_04\_LT-(continue)



# POOJA SERIES



Pooja\_05\_LT-(continue)  
Pooja\_05\_HL1-(continue)  
Pooja\_05\_LT-(continue)



Pooja\_05\_LT-(continue)  
Pooja\_05\_HL2-(continue)  
Pooja\_05\_LT-(continue)



**NOVAC**  
CERAMIC  
Committed to Quality

POOJA SERIES

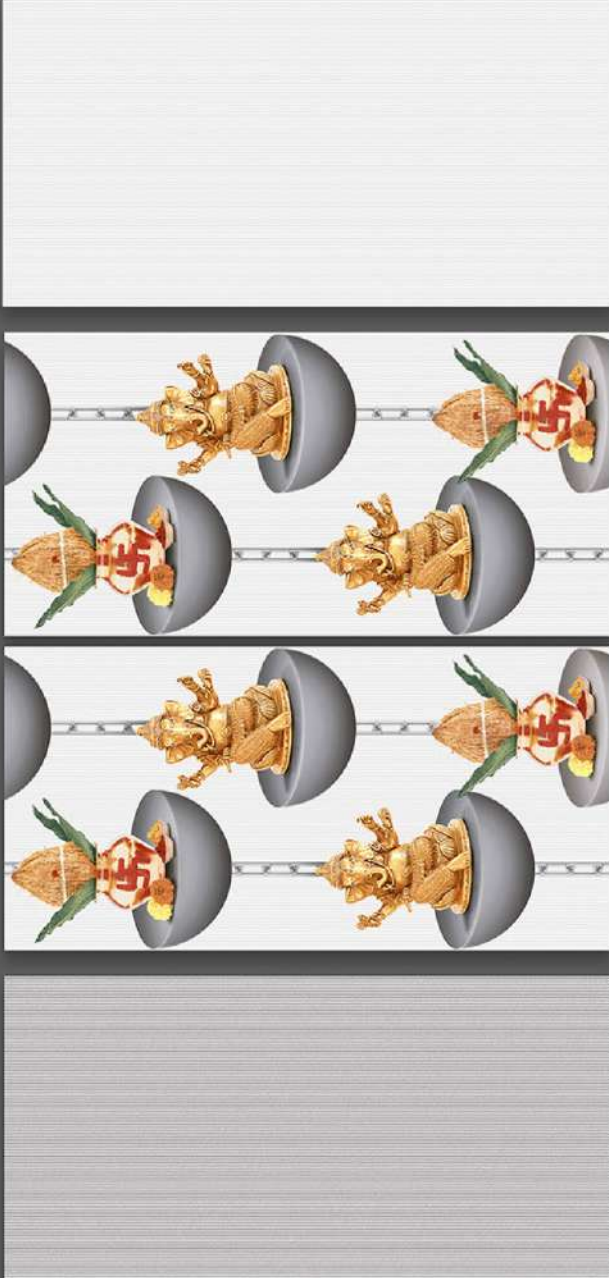


Pooja\_05\_LT-(continue)  
Pooja\_05\_HL3-(continue)  
Pooja\_05\_LT-(continue)



Pooja\_05\_LT-(continue)  
Pooja\_05\_HL4-(continue)  
Pooja\_05\_LT-(continue)

# POOJA SERIES



Pooja\_06\_LT-(continue)  
Pooja\_06\_HL1-(continue)  
Pooja\_06\_DK-(continue)

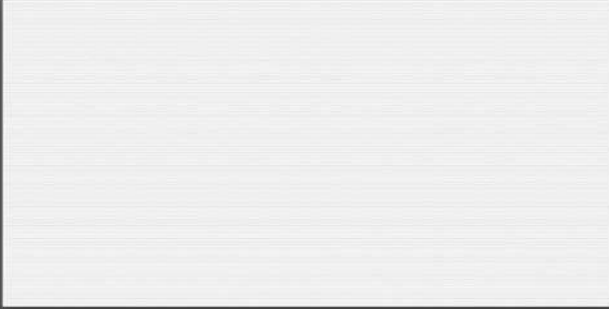


Pooja\_06\_LT-(continue)  
Pooja\_06\_HL2-(continue)  
Pooja\_06\_DK-(continue)

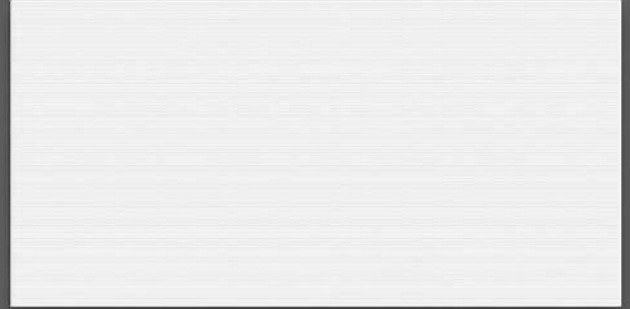
# POOJA SERIES



**NOVAC**  
CERAMIC  
Committed to Quality



Pooja\_06\_LT-(continue)  
Pooja\_06\_HL3-(continue)  
Pooja\_06\_DK-(continue)



Pooja\_06\_LT-(continue)  
Pooja\_06\_HL4-(continue)  
Pooja\_06\_DK-(continue)



**NOVAC**  
CERAMIC  
Committed to Quality

# POOJA SERIES



Pooja\_07\_LT-(continue)  
Pooja\_07\_HL1-(continue)  
Pooja\_07\_DK-(continue)



Pooja\_07\_LT-(continue)  
Pooja\_07\_HL2-(continue)  
Pooja\_07\_DK-(continue)

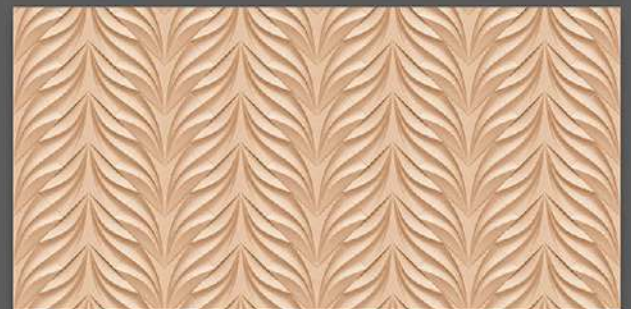


**NOVAC**  
CERAMIC  
Committed to Quality

POOJA SERIES



Pooja\_07\_LT-(continue)  
Pooja\_07\_HL3-(continue)  
Pooja\_07\_DK-(continue)



Pooja\_07\_LT-(continue)  
Pooja\_07\_HL4-(continue)  
Pooja\_07\_DK-(continue)

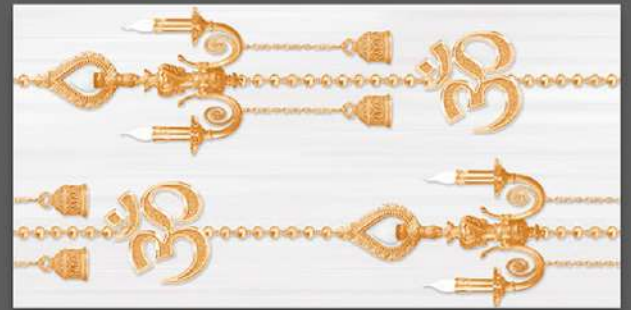


**NOVAC**  
CERAMIC  
Committed to Quality

# POOJA SERIES



Pooja\_08\_LT-(continue)  
Pooja\_08\_HL1-(continue)  
Pooja\_08\_DK-(continue)



Pooja\_08\_LT-(continue)  
Pooja\_08\_HL2-(continue)  
Pooja\_08\_DK-(continue)

# POOJA SERIES



Pooja\_08\_LT-(continue)  
Pooja\_08\_HL3-(continue)  
Pooja\_08\_DK-(continue)



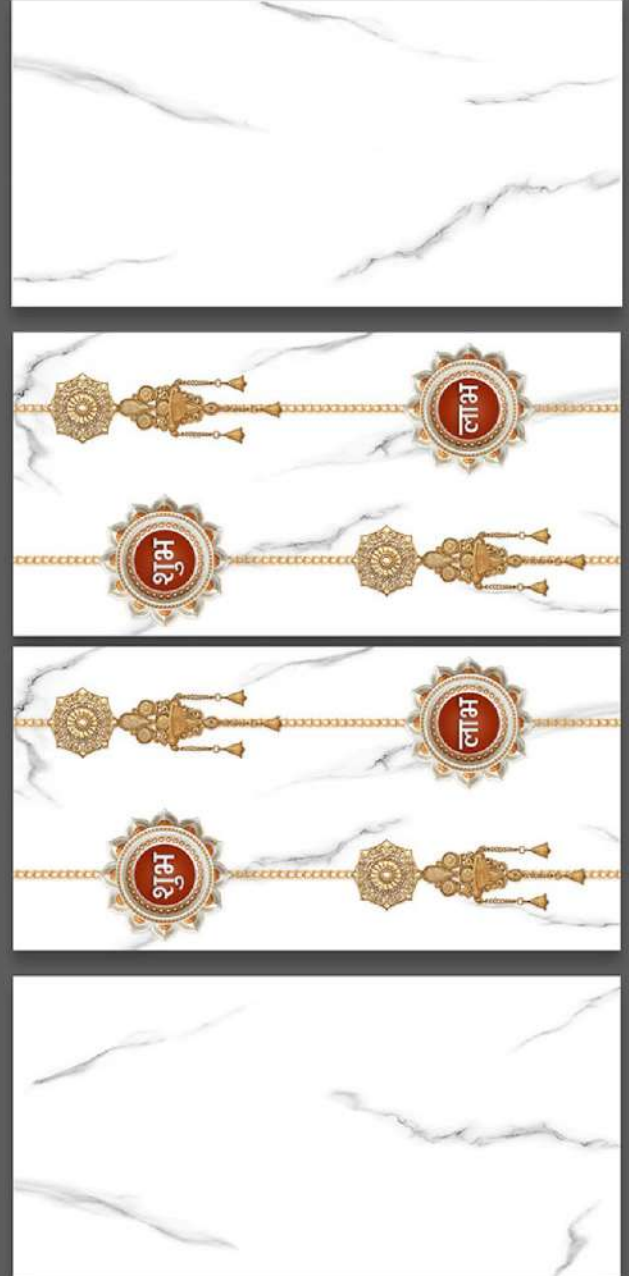
Pooja\_08\_LT-(continue)  
Pooja\_08\_HL4-(continue)  
Pooja\_08\_DK-(continue)



# POOJA SERIES



2096\_LT-(Random)  
2096\_Pooja\_1-(Plain)  
2096\_LT-(Random)



2096\_LT-(Random)  
2096\_Pooja\_2-(Plain)  
2096\_LT-(Random)



**NOVAC**  
CERAMIC  
Committed to Quality

**POOJA SERIES**



2096\_LT-(Random)  
2096\_Pooja\_3-(Plain)  
2096\_LT-(Random)

2096\_LT-(Random)  
2096\_Pooja\_4-(Plain)  
2096\_LT-(Random)



## **NOVAC CERAMIC LLP**

At: Lalpar, Real Plaza - 1, Near Omkar Petroleum,  
8-A, National Highway, Morbi - 363 642.

Cell: +91 97251 20510

[www.novacceramic.com](http://www.novacceramic.com) | [info@novacceramic.com](mailto:info@novacceramic.com)